

# WOODTURNING

Watching rough-sawn timber transform into a piece of art on the lathe is like nothing else.



70	WOOD LATHES
76	CHUCKS
77	CHUCK JAWS
80	LATHE TOOLS & ACCESSORIES
86	CHISEL SETS
88	INDIVIDUAL CHISELS



## Nova Super 2 Woodturning Chuck

Ideal chuck for those with larger lathes with up to 508mm swing. A brilliant all-round chuck for the majority of users, from beginners to professionals. Compatible with all Nova accessory jaws. Being a keyed chuck it offers the ease of one hand adjustment. Features include: Fully sealed backing plate, Unique indexing function built into the backing plate. Indexing suitable only on Nova lathes, Fully backward compatible with SuperNova and Nova Chuck sets, Precision hardened, high tech jaw slides with auto stop, Ball nose Allen key features large, easy to grip handle, Fitted with standard 50mm jaws, 100mm body.

ITEM NO.	DETAILS	PRICE
TK-SN2	100mm	\$193.00



## CREATING FUNCTIONAL ART



As a woodworker, creating functional art from wood has always been my focus. The more raw, untouched, untreated and unfinished the wood, the more appeal it has to me. Using a bandsaw in these beginning stages is essential – these misshapen pieces often need ‘taming’ to get them onto the lathe. In the winter of 2012, a leaning silky oak tree in my parents’ backyard on the Sunshine Coast threatened the fence line and my father, ever the forager, managed to rescue it from the council’s wood chipper. Fast forward six years and a small portion of this same silky oak formed the starting piece of my next bowl. Bandsaw to the rescue!

Using a simple circle-cutting jig mounted on the bandsaw, I was able to rough out a basic bowl shape before mounting it onto the lathe. The versatility created by interchanging my bandsaw blades from a re-saw blade with a wider TPI, to a thinner, tighter TPI blade was important for bowls of different sizes – the smaller the bowl, the closer the TPI.

Another by-product of my endless search for less-than-perfect wood meant that my bowls would often crack or have voids within them. To combat this, my recurring course of action was to fill those voids with polyester resin, a trick which worked particularly well on my silky oak bowl.

As any wood turner knows, cheap and nasty tools get you about as far as you can throw them. Where most people would reach for the carbide-tipped tools, for me, turning a resin-filled silky oak blank was made easy by my selection of Robert Sorby gouges. With superior quality high speed steel, the Robert Sorby ‘long and strong’ spindle gouge made quick work of this piece. With the addition of resin to any wood turning project comes a sanding mission, but the Robert Sorby ‘Micro Sander’ got into the tight spots and was able to make my resin bowl shine all the way up to 7000 grit.

JOSH ENNEW is a creative and innovative Brisbane-based woodturner with a passion for creating functional art. Follow Josh on Facebook @ J.Ennew Woodcraft.



## WOOD LATHES

### Carbatec Economy Mini Lathe



We're proud to say that we introduced the Mini lathe into the Australian market back in the early 90's, offering Australian hobbyists a chance to experience the versatility and functionality of a wood lathe in a small, affordable package. This machine carries on that tradition with all the features you have come to expect from Carbatec. Today there are dozens of options when looking at mini lathes. This machine is a small, well-priced lathe with five spindle speeds yet can tackle those small to medium jobs with ease. Our standard spindle thread and morse taper make it easy to add accessories such as chucks or Stebcentres that allow you to branch out into all kinds of turning projects. The headstock, bed and tailstock are constructed of cast iron and the 1/2 HP induction motor has more than enough power for projects like pen turning and small spindle turning. It is ideally suited for the beginner or as a lathe which can be transported more easily due to its lighter weight and compact size. Currently the package includes a drive centre, revolving tailstock centre and 80mm diameter faceplate.

ITEM NO.	DETAILS	PRICE
WL-B440H	Carbatec Mini Lathe	\$359.00
MC1018-EXT	Bed Extension suit WL-B440H	\$109.00
WL-B440-STAND	Floor Stand Suit Mini Lathes	\$179.00
WL-B440-STAND-EX	Floor Stand Extension	\$169.00

#### SPECIFICATIONS

Motor Power	375W (0.5HP) 10A
Switch Type	NVR
Headstock Movement	Fixed
Hole through Hwhead/Tailstock	10mm
Indexing Positions	None
Distance between Centres	440mm
Morse Taper	MT2
Spindle Thread	30mm x 3.5mm
Swing Over Capacity	260mm
Workshop Footprint	
Speed Adjustment	Manual belt change
No. of Speed Ranges	6
Speed Range (RPM)	300 - 3200
Warranty Period	1 Year
Shipping Weight	35kg
Nett Weight	33kg



WL-B440-STAND



WL-B440-STAND-EX



BED EXTENSION

### Carbatec Pro Mini Lathe



All of the knowledge used to produce other Carbatec lathe models have all been poured into this little machine. Full, heavy cast iron production provides heft and minimises vibration. The belt cover is easily removed for belt and pulley adjustments. A magnet holds the cover in place so it is not dislodged while the machine is running.

An optional floor stand is available (WL-B440-STAND) for this machine to enable it to be used as a stand-alone unit. In addition, an extension can also be fitted with an optional bed extension (WL-B440P-EXTN) which can also be mounted on its own stand (WL-B440-STAND-EX), turning this lathe into a medium sized lathe. This is excellent value in a mid-sized lathe!

ITEM NO.	DETAILS	PRICE
WL-B440P	Carbatec Professional Mini Lathe	\$599.00
WL-B440P-EXTN	Bed Extension suit WL-B440P	\$229.00
WL-B440-STAND	Floor Stand Suit Mini Lathes	\$179.00
WL-B440-STAND-EX	Floor Stand Extension	\$169.00

#### SPECIFICATIONS

Motor Power	375W (0.5HP) 10A
Switch Type	NVR
Headstock Movement	Fixed
Hole through Hwhead/Tailstock	10mm
Indexing Positions	12
Distance between Centres	440mm
Morse Taper	MT2
Spindle Thread	30mm x 3.5mm
Swing Over Capacity	300mm
Workshop Footprint	
Speed Adjustment	Manual belt change
No. of Speed Ranges	6
Speed Range (RPM)	350 - 3250
Warranty Period	1 Year
Shipping Weight	48kg
Nett Weight	52kg

## Nova Comet II Electronic Variable Speed Midi Lathe



Portable, space saving - yet delivers the capacity and the rugged stability of larger lathes.

With the Nova's unique Versaturn Accessories, transform your Nova Comet II midi lathe into an all-in-one Wood Turning and Woodworking system.

The Nova Comet II Midi Lathe is perfect for a wide range of Woodworking projects.

Powerful Electronic Variable Speed Motor offers an RPM range from 250 to 4000 RPM With a super lower speed up to a super-high speed, this makes the Nova Comet II Midi Lathe the perfect choice for a variety of projects, from pens to bowls.

Forward and Reversing Switch offers additional flexibility and allows you to achieve a superior finish. 305mm (12") Swing Capacity over bed and 419mm (16.5") between centres, extendable with bed extension accessory.

The 3 Step Pulley System offers different speed ranges while providing maximum flexibility. The middle step usually provides enough range for most Wood Turning applications, with the additional 2 steps provide more torque for the more demanding applications.

ITEM NO.	DETAILS	PRICE
TK-COMET		\$899.00

### SPECIFICATIONS

Motor Power	750W (1.0HP) 10A
Switch Type	NVR
Headstock Movement	Fixed
Hole through Hwhead/Tailstock	12mm
Indexing Positions	12
Distance between Centres	419mm
Morse Taper	MT2
Spindle Thread	1" x 8TPI
Swing Over Capacity	300mm
Workshop Footprint	
Speed Adjustment	Electronic Variable
No. of Speed Ranges	3
Speed Range (RPM)	180 - 3000
Warranty Period	2 Years (1 Year Electronics)
Shipping Weight	37kg
Nett Weight	34kg

## JET Midi Lathe - Electronic Variable Speed



A heavy duty work horse in a small package, this lathe has what it take to pack a punch. This is a different lathe than JET have ever done in the past. It features a heavy duty cast iron bed giving it extra stability and minimal vibration. The headstock and tailstock are also beefed up, giving it an all-round look and feel that any woodturner would be proud to own, and other be envious of. The tailstock offers 50mm of travel the live centre, or drill bit when a chuck is fitted. The quick release levers make adjustments easy for the banjo, tailstock and motor making adjusting this lathe simple. These Lathes perfect for the seasoned pen turner or hobbyist looking for a reliable Midi Lathe, it is not limited here though. The powerful heavy duty motor and optional extension, makes this lathe the perfect second smaller option for the professional, and perfect upgrade from another mini or midi lathe. For a midi lathe, the enormous swing capacity of 318mm makes turning those larger bowls and vessels finally possible without the need for a big lathe. The reverse rotation is ideal for sanding and finishing, this is a simple and easy switch between modes. Included accessories: 152mm (6") and 254mm (10") tool rests, 76mm (3") faceplate. American style switch shown in photo.

ITEM NO.	DETAILS	PRICE
JET-JWL1221VS		\$1349.00

### SPECIFICATIONS

Motor Power	750W (1.0HP) 10A
Switch Type	NVR
Headstock Movement	Fixed
Hole through Hwhead/Tailstock	9.5mm
Indexing Positions	24
Distance between Centres	495mm
Morse Taper	MT2
Spindle Thread	1" x 8TPI
Swing Over Capacity	318mm
Workshop Footprint	
Speed Adjustment	Electronic Variable
No. of Speed Ranges	3
Speed Range (RPM)	50 - 3000
Warranty Period	3 Years
Shipping Weight	
Nett Weight	60kg



### Carbatec 900mm Variable Speed Wood Lathe



Perfect for the beginning or budget-conscious woodturner. The speed is variable via a split pulley system that allows the spindle to run between 500 to 2000 rpm. While the motor is running, turn the handle, allowing the pulleys to separate giving a different belt ratio, therefore changing the speed of the spindle. This is done easily and is an economical way to produce variable speed. The headstock can be rotated an impressive 360 deg, with 4 locking positions, allowing outboard turning. The cast iron bed has a smooth ground surface allowing the banjo and tailstock to move easily along its length. For outboard turning you will need to reposition the banjo and tool rest accordingly. Both the headstock and tailstock have a No. 2 morse taper, allowing popular turning accessories to be used, with the headstock also having a common M30 x 3.5 thread. This unit also includes pressed metal legs with pressed metal tool tray, 300mm tool rest with two piece articulated banjo, face plate, drive centre, revolving centre and hollow tailstock. All the kit you need to get started in the rewarding hobby of woodturning. A reliable motor is supplied with alloy-constructed cooling fins to provide cooler running.

ITEM NO.	DETAILS	PRICE
WL-900H		\$599.00

#### SPECIFICATIONS

Motor Power	560W (0.75HP) 10A
Switch Type	NVR
Headstock Movement	360 Swivel
Hole through Hwhead/Tailstock	9mm
Indexing Positions	None
Distance between Centres	840mm
Morse Taper	MT2
Spindle Thread	30mm x 3.5mm
Swing Over Capacity	300mm
Workshop Footprint	1600mm x 400mm x 1120mm
Speed Adjustment	Variable
No. of Speed Ranges	1
Speed Range (RPM)	500 - 2000
Warranty Period	1 Year
Shipping Weight	85kg
Nett Weight	80kg

### Carbatec 1100mm Variable Speed Wood Lathe



A tremendous new lathe model with all the features of a larger professional quality lathe. The speed is variable via a split pulley system that allows the spindle to run between 500 to 2000 rpm. While the motor is running, turn the handle, allowing the pulleys to separate giving a different belt ratio, therefore changing the speed of the spindle. This is done easily and is an economical way to produce variable speed. The headstock can be rotated an impressive 360 deg, with 4 locking positions, allowing outboard turning. The cast iron bed has a smooth ground surface allowing the banjo and tailstock to move easily along its length. For outboard turning you will need to reposition the banjo and tool rest accordingly. Both the headstock and tailstock have a No. 2 morse taper, allowing popular turning accessories to be used, with the headstock also having a common M30 x 3.5 thread. This unit also includes heavy duty cast iron legs with pressed metal tool tray, 300mm tool rest with two piece articulated banjo, face plate, drive centre, revolving centre and hollow tailstock. All the kit you need to get started in the rewarding hobby of woodturning.

ITEM NO.	DETAILS	PRICE
WL-1100P		\$999.00

#### SPECIFICATIONS

Motor Power	1.1Kw (1-1/2HP) 10A
Switch Type	NVR
Headstock Movement	360 Swivel
Hole through Hwhead/Tailstock	15mm
Indexing Positions	None
Distance between Centres	1130mm
Morse Taper	MT2
Spindle Thread	30mm x 3.5mm
Swing Over Capacity	410mm
Workshop Footprint	2000mm x 450mm x 1200mm
Speed Adjustment	Variable
No. of Speed Ranges	1
Speed Range (RPM)	500 - 2000
Warranty Period	2 Years
Shipping Weight	182kg
Nett Weight	140kg

## Nova 1624-44-2 Lathe with Stand



The Nova 1624-44-2 Lathe offers exceptional value for money, providing power and features that are offered only by other larger lathes. Its accessories are compatible are common between model, so if you are upgrading, all of the accessories will fit, Morse 2 tapers fitted to both tailstock and headstock. The headstock can be rotated a full 360°, and locked where the user wants it, so outboard turning is possible, so those larger projects can be done.

With a swing over the bed of 400mm, 600mm between centres, 740mm outboard swing, 1.5HP motor providing variable speeds between 178rpm and 3000rpm, any projects can be turned from the smallest of items such as pens to large vases and platters, or those unique timbers with difficult grain.

Featuring a reversible motor, making it an attractive option for the left handed turner, as well as being great for finish sanding and finishing.

Solid cast iron is used throughout to give a sturdy solid base to work with giving a good stable feel. A combination of heavy duty bearings and precision machining, and the same 1-1/4" x 8 tpi headstock thread will give the rock steady performance for anyone no matter their experience.

ITEM NO.	DETAILS	PRICE
TK-1624-44-2		\$1849.00

### SPECIFICATIONS

Motor Power	1.1Kw (1-1/2HP) 10A
Switch Type	NVR
Headstock Movement	360 Swivel
Hole through Hwhead/Tailstock	15mm
Indexing Positions	24
Distance between Centres	600mm
Morse Taper	MT2
Spindle Thread	1-1/4" x 8TPI
Swing Over Capacity	400mm
Workshop Footprint	1490mm x 575mm x 1180mm
Speed Adjustment	Manual belt change
No. of Speed Ranges	8
Speed Range (RPM)	180 - 3000
Warranty Period	2 Years (1 Year Electronics)
Shipping Weight	124kg
Nett Weight	114kg

## Carbatec 1100mm Electronic Variable Speed Wood Lathe



Not all lathes are created equal and this lathe has all the features to set itself apart from the pack. A heavy dust cast iron bed that is precision ground adds heft, stability and minimizes vibration. The cast iron headstock swivel through 360 deg with 45 deg and 90 deg stops for outboard turning. Perfect speeds to suit what you are turning are achieved through the electronic variable speed drive that has three speed ranges &ndash, 0 to 1000/2000 and 3750rpm.

A MT2 tailstock has 4" travel secure spindle work or act as a guide at the beginning of the bowl turning process. Also included in the package is a 14" tool rest and a 6" face plate allowing you to do optimal spindle work without having the reposition the toolrest. Complicated indexing operations can also be performed with the spindle featuring positive indexing in 36 - 10 deg increments for fast fluting and veining. The machine also features a mushroom stop switch backed with magnetic material so it can be placed within reach for easy stop/start operations.

ITEM NO.	DETAILS	PRICE
WL-V1100C		\$2699.00

### SPECIFICATIONS

Motor Power	1.1Kw (1-1/2HP) 10A
Switch Type	NVR
Headstock Movement	360 Swivel
Hole through Hwhead/Tailstock	9.5mm
Indexing Positions	36
Distance between Centres	1130mm
Morse Taper	MT2
Spindle Thread	30mm x 3.5mm
Swing Over Capacity	406mm
Workshop Footprint	1800mm x 600mm x 1400mm
Speed Adjustment	Electronic Variable
No. of Speed Ranges	6
Speed Range (RPM)	50 - 3790
Warranty Period	3 Years
Shipping Weight	185kg
Nett Weight	160kg

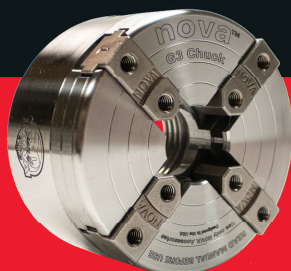


# nova™

The Brand Turners' Ask For.

# THE ORIGINAL INNOVATORS

teknatool.com



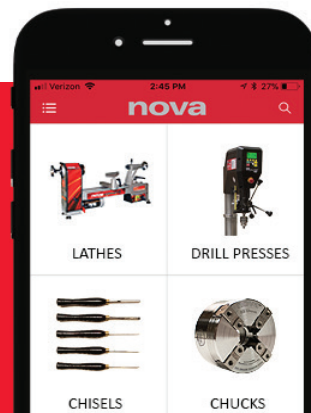
All accessories are interchangeable between our standard chucks. NOVA is the only chuck manufacturer to offer this flexible and money saving feature.

## DOWNLOAD OUR APP

As part of our progressive improvement of the customer in-store experience, we have developed an app available for mobile and tablet. Search for NOVA Woodworking.

**Mobile version:** Search, browse and shop NOVA woodworking products. Watch videos, find specifications and manuals. Find your local dealer, save favorites to your wishlist and more. All from your iPhone, iPod touch or Android device.

**In-store KioskTablet version:** Learn more about NOVA chucks, shop, find specifications, watch videos and more. All from your iPad or Android tablet.



## NOVA BREAKTHROUGH DVR MACHINES

PRODUCT CODE: TK-SATURN

### NOVA SATURN LATHE

Combines the best features of larger lathes – power, capacity and capability with state of the art technology to make your turning more efficient, fun and safer. Saturn DVR is the most versatile lathe on the market, combining proven technology from its predecessor NOVA DVR XP with some great new features.



PRODUCT CODE: TK-DVR-DRILLPRES

### NOVA VOYAGER DVR VARIABLE SPEED DRILL PRESS

The world's first smart drill press combines the best features of drill presses with state of the art technology to make your project work more efficient, fun and safer. It's the most versatile drill press on the market, easily able to handle wood, metal, plastics and glass. It combines the proven technology with some great new features with intelligent Striatech ADAPTIVE CONTROL™ software that works for you to produce optimum conditions for your specific projects.



### THE DVR ADVANTAGE!

- Direct Drive - No belts or pulleys
- Variable Speed Range  
Saturn: 100 – 3500 RPM  
Voyager: 50 - 5500 RPM
- Powerful torque from high to low speed range
- No speed drop off - Maintained within 1%
- Safety Sensing – Auto shut down with abnormal vibration or chisel dig in
- Energy efficient – Internal sensor feeds in just enough power for optimal performance

## WOOD LATHES

### Nova DVR Saturn Variable Speed Lathe



Nova have long been at the forefront of technology in their machinery and the newly released SATURN DVR is no exception. This family of lathes are in a league of their own with no comparable technology available anywhere else. Representing the latest release in the Nova DVR range, this innovative lathe features cutting edge technology, giving the user unprecedented control over their machine. The 2HP Smart Direct Drive Motor has all the power and torque you need, without the vibration or wear associated with drive belts. The DVR digital technology introduces a host of user friendly features such as a dial for complete Electronic Variable Speed from 100-5000RPM, 10 Favourite Speed Settings, "Tool Dig In" and "Excess Vibration" auto stop and more...

A solid cast iron bed, head and tail make for one very sturdy and solid lathe, while the Trimax triple bearings and direct drive ensure an extraordinarily smooth turning experience. Also available WITH heavy cast iron stand. Buy both and save. See below. Nova offer a 5 year warranty on parts, with 2 years on the motor and electronics. Do yourself a favour and experience the power and control of Nova DVR for yourself.

ITEM NO.	DETAILS	PRICE
TK-DVR-SAT-URN-XP		\$2,999.00
TK-SATURN		\$3,549.00
TK-25054		\$599.00

#### SPECIFICATIONS

Motor Power	1.5Kw (2.0HP) 10A
Switch Type	NVR
Headstock Movement	360 Swivel
Hole through Hwhead/Tailstock	15mm
Indexing Positions	24
Distance between Centres	600mm
Morse Taper	MT2
Spindle Thread	1-1/4" x 8TPI
Swing Over Capacity	400mm
Workshop Footprint	1130mm x 640mm x 1220mm
Speed Adjustment	Electronic Variable (DVR)
No. of Speed Ranges	1
Speed Range (RPM)	100 - 5000
Warranty Period	5 Years (2 Years Electronics)
Shipping Weight	150Kg
Nett Weight	142Kg

### Nova Galaxi DVR1644 Lathe



Nova introduce their new GALAXI DVR lathe. The DVR (Digital Variable Reluctance) motor is computer controlled, there are no belts, no brushes or anything that wears, providing the highest torque at the slowest speed down to 100 rpm, all the way through to 5000 rpm. The bed is precision ground allowing for the headstock, tailstock and banjo to be moved along the bed without any fear of them binding. All of these can be positioned anywhere along the entire length of the bed. The headstock can be positioned anywhere along the length of the heavy duty bed, allowing for great flexibility. The headstock can swivel 360°, and lock in at any position, preset indentations are positioned at common angles.

The banjo is very heavy duty and has a 12" / 305mm steady rest with 1" post.

4 preset buttons provide quick speed settings at the push of a button rather than spending time manually setting the speed.

The extra heavy duty cast iron stand has been designed with convenience in mind, with provision for custom made shelves to be added by the user should this be desired. The shelves are not supplied. Adjustable feet are also incorporated into the casting of the bottom of the stand for adjustment should this be positioned on an uneven floor.

ITEM NO.	DETAILS	PRICE
TK-GALAXI-1644		\$4,099.00

#### SPECIFICATIONS

Motor Power	1.5Kw (2.0HP) 10A
Switch Type	NVR
Headstock Movement	360 Swivel
Hole through Hwhead/Tailstock	15mm
Indexing Positions	24
Distance between Centres	1117mm
Morse Taper	MT2
Spindle Thread	1-1/4" x 8TPI
Swing Over Capacity	406mm
Workshop Footprint	1675mm x 625mm x 1260mm
Speed Adjustment	Electronic Variable (DVR)
No. of Speed Ranges	1
Speed Range (RPM)	100 - 5000
Warranty Period	5 Years (2 Years Electronics)
Shipping Weight	239kg
Nett Weight	204kg



## CHUCKS



### Robert Sorby Eccentric Chuck System

Usually wobble in turning is not good! However the balanced and precision of this eccentric chuck allows you to apply some creativity to your turning without sacrificing accuracy. You will enjoy the challenge and everyone will want to ask you how you did it!

ITEM NO.	DETAILS	PRICE
RSB-RS60		\$555.00



### Nova G3 Reversible Chuck

Nova G3 Woodturning Reversible Chuck has been **developed to fit to the Nova Comet II lathe**, with the ability to work in reverse without coming loose with the rotation of the spindle. This is commonly used when sanding and finishing. The 45mm long body adds minimal length from the headstock, so reducing the amount of stress placed upon the lathe, spindle and motor. No insert is required, it mounts straight to the headstock thread. Suits Comet II only.

ITEM NO.	DETAILS	PRICE
TK-48232	90mm	\$149.00



### Nova G3 Woodturning Chuck

Ideal for mid-size lathes. A good all around chuck for the beginner or intermediate user to advanced users will find it suitable as a secondary chuck. Compatible with all Nova accessory jaws. Being a keyed chuck it offers the advantage of one-handed adjustment. Features include: Backward compatible with SuperNova and Nova Chuck jaws and inserts, precision hardened,

high-tech jaw slides with auto stop, Jacobs style chuck key with large, easy-grip handle, fitted with standard 50mm jaws, 90mm diameter body.

ITEM NO.	DETAILS	PRICE
TK-G3	90mm	\$149.00

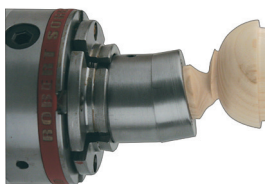


### Nova Super 2 Woodturning Chuck

Ideal chuck for those with larger lathes with up to 508mm swing. A brilliant all-round chuck for the majority of users, from beginners to professionals. Compatible with all Nova accessory jaws. Being a keyed chuck it offers the ease of one hand adjustment. Features include: Fully sealed backing plate, Unique indexing function built into the backing plate. Indexing suitable only

on Nova lathes, Fully backward compatible with SuperNova and Nova Chuck sets, Precision hardened, high tech jaw slides with auto stop, Ball nose Allen key features large, easy to grip handle, Fitted with standard 50mm jaws, 100mm body.

ITEM NO.	DETAILS	PRICE
TK-SN2	100mm	\$193.00



### Robert Sorby Wobble Chuck

Robert Sorby's wobble chuck takes turning to another level or dimension. It gives the woodturner the opportunity to experiment with offset turning techniques. This is one of those fun things that can be done in woodworking that creates interest. Requiring a chuck with 2" (50mm) jaws to securely hold it, it fits neatly into either the Teknatool SN2 or G3 chuck, and is great for creating quirky trinket boxes, off set goblets and ornamental spoons.

ITEM NO.	DETAILS	PRICE
RSB-LRSWC		\$160.00



### Nova Titan III Chuck

The largest and most powerful chuck in the NOVA chuck range, it is one of the most versatile. Designed to hold timber while being turned, it does it well, it holds BIG pieces securely and safely using 3 fixing screws per jaws rather than the two that the SuperNova II and G3 use.

It is compatible with all of the Nova Standard chuck jaw sets (except Infinity), and capable of holding more than

the Super Nova2. Featuring a 1-1/4" x 8TPI thread, it fits the larger Nova lathes, and other larger lathes. It is a fully sealed unit, and comes with Titan III PowerGrip jaws and Woodworm Screw, and conveniently operated by a ball nose Allen style wrench, making the ideal chuck for those larger to super-sized jobs.

ITEM NO.	DETAILS	PRICE
TK-TITAN3		\$379.00

### Carbatec Jacobs Style Chuck

Jacob Style Drill 13mm chuck with No. 1 or No. 2 Morse Taper.



ITEM NO.	DETAILS	DETAILS	PRICE
HM-4	13mm	No. 1 MT	\$36.00
HM-6	13mm	No. 2 MT	\$36.00

### Carbatec Keyless Chuck

If you've ever lost your chuck key in the pile of shavings behind your lathe, you'll understand the luxury of owning a keyless chuck! 1mm to 13mm capacity chuck with No. 2 Morse taper shank and B-16 connection to chuck.



ITEM NO.	DETAILS	PRICE
HM-513	No. 2 MT	\$69.00

## CHUCK ACCESSORIES



### Nova Insert

Chuck insert reducers fit into the back of the chuck and onto your lathe headstock and onto your lathe headstock spindle. Which one you need will depend on the spindle size of your lathe. There is a wide range of inserts to suit most common lathes. The inserts are threaded both inside and out. The inside thread comes in a variety of sizes common to lathe manufacturers. The outside thread is a unique inhouse thread made to fit into the Nova chucks.

ITEM NO.	DETAILS	PRICE
NOVAINS114X8	1-1/4" x 8TPI	\$25.00
NOVAINS1X10	1" x 10TPI	\$25.00
NOVAINS1X10LH	1" x 10TPI L/H Thread	\$25.00
NOVAINS1X8	1" x 8TPI	\$25.00
NOVAINS1X8IXNS	1" x 8TPI (Suit Comet II)	\$25.00
NOVAINS34X10	3/4" x 10TPI	\$25.00
NOVAINS34X16	3/4" x 16TPI	\$25.00
NOVAINSM18X25	18mm x 2.5mm Pitch	\$25.00
NOVAINSM30X35	30mm x 3.5mm Pitch	\$25.00

### Nova Spanner for Nova Chuck Inserts



The Nova Spanner is thin to fit between the lathe and chuck in order to aid with removing any of the nova chucks that are fitted with Nova inserts. Fitting between the lathe headstock and the chuck, it neatly engages with the insert that is threaded into the chuck allowing it to be loosened. The handle has a generous length, giving plenty of leverage, it is the easiest way to remove a Nova chuck.

ITEM NO.	DETAILS	PRICE
TK-SPANNER		\$31.00

### Nova Woodworm Screw



Allows an easy lead into the wood so that larger blanks can be mounted onto the chuck.

ITEM NO.	DETAILS	PRICE
TK-10006		\$32.00



### Nova Chuck Spur Centre

Nova Chuck Spur Centre - Can be held in your chuck jaws for driving centre work - For use in Nova Chucks.

ITEM NO.	DETAILS	PRICE
TK-NCSC		\$33.00

## CHUCK JAWS



### Nova Titan III HD Bowl Jaws

The Titan III Deep Grip Jaw Set uses 3 screws per jaw to hold them in place for holding those larger pieces of timber securely, they have a massive 146mm capacity, and feature the same standard dovetail profile to give superior holding.

ITEM NO.	DETAILS	PRICE
TK-13040	146mm	\$103.00



### Nova Titan III HD Bowl Jaws

The Titan III Deep Grip Jaw Set uses 3 screws per jaw to hold them in place for holding those larger pieces of timber securely, they have a massive 165mm capacity, and feature the same standard dovetail profile to give superior holding.

ITEM NO.	DETAILS	PRICE
TK-13041	165mm	\$113.00



### Nova Small Bowl Jaw

The 35mm bowl jaws fit perfectly into the current jaw range, picking up a small gap left between the 25mm and the 50mm. These jaws are perfect for small to medium sizes with maximum grip, provided by the dovetail.

ITEM NO.	DETAILS	PRICE
TK-6019	35mm	\$50.00



### Nova Medium Bowl Jaw

This set is designed to enrich Nova jaw offering in mini turning area. They are ideal to use on Nova Midi chuck for midi/mini work. Benefits and Features: A great range of smaller projects can be mounted and turned using either the expansion mode (mostly for bowls) or the contraction mode (mostly for spigots). Made from medium tensile carbon K1045 steel to provide maximum structural strength, Standard Woodworm Screw can be used with

these jaws, Able to be used on all Nova Chucks in the range.

ITEM NO.	DETAILS	PRICE
TK-JS70N	70mm	\$75.00



### Nova Large Bowl Jaws

This jaw set is very versatile, has great holding power for large bowls and also moderate hollow forms. Nova chucks have been especially designed so the jaws will cut into the wood, grip firmly in the contraction mode and provide high tear out strength. The dovetail walls are 3 x the thickness of conventional jaw types for rugged wood.

ITEM NO.	DETAILS	PRICE
TK-6014	75mm	\$107.00



## CHUCK JAWS



### Nova Mini Cole Jaw Set

Designed for re-chucking of bowls to remove chuck marks or to reshape the bottoms of bowls that have already been turned. Other Nova jaw sets can be fitted to Mini Cole Jaws to make a combination assembly. Mini Cole Jaws are suitable for lathes with a minimum swing of 203mm.

ITEM NO.	DETAILS	PRICE
TK-6006		\$75.00



### Nova Cole Jaw Buffering Kit

A versatile set designed for re-chucking of bowls that have already been turned. Other Nova jaw sets can be fitted to Mini or Nova Cole Jaws to make a combination assembly. The purpose of the kit is to provide the user with increased versatility and safety when re-chucking bowls for final finishing etc. Comes with 16 buffers and required fixings for the above Jaws.

ITEM NO.	DETAILS	PRICE
TK-6030		\$45.00



### Nova Cole Jaw

A versatile set designed for re-chucking of bowls to remove chuck marks, add decoration or to re-shape the bottoms of bowls that have already been turned. Other Nova jaw sets can be fitted to the Cole Jaws making a combination jaw facility - expanding dovetail facility for mounting bowls/platters and a reverse dovetail for mounting footed bowls/platters. Many advantages over traditional vacuum chucking. Customisable with false

wooden jaws. Standard Cole Jaws are suitable for lathes with minimum 12"/300mm swing diameter.

ITEM NO.	DETAILS	PRICE
TK-JSCOLE		\$107.00



### Nova Step Jaw

Nova Mini jaws set is designed to enrich Nova jaw offering in mini turning area. They are ideal to use on Nova Midi chuck for midi/mini work. Benefits and Features: A great range of smaller projects can be mounted and turned using either the expansion mode (mostly for bowls) or the contraction mode (mostly for spigots). Made from medium tensile carbon K1045 steel to provide maximum structural strength, Standard Woodworm Screw can be

used with these jaws, Able to be used on all Nova Chucks in the range.

ITEM NO.	DETAILS	PRICE
TK-6025	32mm	\$75.00

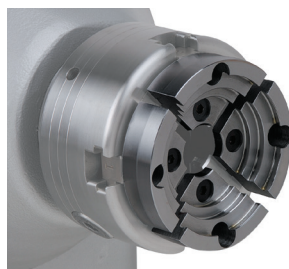


### Nova Large Cole Jaw Set

Nova 6040 Large Cole Jaw Set has 12"/304mm bowl diameter capacity. This is one of the most popular of all the Nova chuck accessory jaws and is now in a new larger size of 12". Designed to expand your range and capacity of your standard Nova Chuck for specific projects and applications. Nova 6040 Large Cole Jaw Set is versatile, designed for the re-chucking of bowls to remove chuck marks, add decoration or to re-shape the bottoms

of bowls that have already been turned. These jaws have many advantages over traditional vacuum chucking. Suitable for lathes with a minimum 12" swing diameter.

ITEM NO.	DETAILS	PRICE
TK-6040	305mm	\$150.00



### Nova Step Jaws

These step jaws are designed primarily to grip in the contracting mode, the base (foot) of footed bowls. The step sizes provide optimum gripping for three foot sizes with minimal crush damaged wood. There is also an expanding dovetail made for alternative recess gripping of bowls. Can hold bowls up to 12" in diameter. Optimum Step sizes: \*42mm (1.65") \* 50mm (2") \* 64mm (2.5") Features standard on all Nova Jaws: Full Cross Function: Only

Nova Chucks give you the same jaw fixing system and same insert/adaptor system across all chuck models. This means all accessory jaws in the range fit all the chucks in the range, including older chuck models\*, giving you the ultimate flexibility. In buying a Nova chuck, you can be confident that whether you want to move up or down the range, any accessories you have invested in will fit. Special Dovetail Profile: Nova chucks have been especially designed so the jaws will cut into the wood, grip firmly in the contraction mode and provide high tear out strength.

ITEM NO.	DETAILS	PRICE
TK-JS75DT	75mm	\$96.00

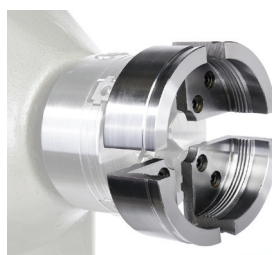


### Nova Large Cole Jaw Extension

NOVA 6039 Cole Jaw extension accessory is **designed specifically for the new Cole Jaw Set 6040**. It is easy to add to your Cole Jaws and takes your 12"/304mm diameter Cole Jaw up to 15"/381mm diameter. Made from Die cast aluminium with pre-set holes for precise closing, durability and long life. Comes with 4 jaw segments, special fasteners and instructions.

Note the other NOVA Cole Jaws in the range, the Standard 10" JSCOLE and Mini 8" 6006 Cole Jaws cannot accept the extension feature. Suitable for lathes with minimum of 16"/406mm diameter capacity. Backed by a full replacement 6-year warranty on all parts.

ITEM NO.	DETAILS	PRICE
TK-6039	305mm to 381mm	\$75.00



### Nova Powergrip Jaws

The most powerful jaw available in the NOVA range for large spigot/hollow form turning on the larger Nova chucks. A great multipurpose jaw for bowl and hollow form turners.

ITEM NO.	DETAILS	PRICE
TK-PJSN		\$107.00



## Nova Pen Plus Jaw

The Nova Pen 'Plus' Jaws easily convert your Nova chuck into a fast and accurate Pen Blank drilling facility. The big jaw profile provides a vibration free, solid grip for all sizes of pen blanks and an accurate cantered hole every time. Also perfect for squaring up the pen blank ends after gluing in the pen kit tubes. Their solid, heavy duty design means not only will they hold Pen blanks securely, but they are also powerful enough to handle larger and

longer spigot work. Requires Cole Jaws (purchased separately).

ITEM NO.	DETAILS	PRICE
TK-6034		\$75.00



## Nova Pin Jaw Set

These special 25mm extended jaws are designed to act like a pin chuck - expanding into a pre-bored hole. This is an especially useful technique for free form edge bowls. A real big advantage over Pin Chucks though is that you don't have to bore to an exact size - any size between the minimum and just under the maximum expansion will do. The longer jaws allow for a very powerful spigot grip for all smaller work like lace bobbins (up to

6" in length) and delicate pots etc. The jaws also have a dovetail to mount small bowls (up to 6" dia).

ITEM NO.	DETAILS	PRICE
TK-JSPIN		\$85.00



## Nova Mini Spigot Jaw Set

NOVA Mini jaws set is designed to enrich NOVA jaw offering in mini turning area. They are ideal to use on NOVA Midi chuck for midi/mini work. Benefits and Features: A great range of smaller projects can be mounted and turned using either the expansion mode (mostly for bowls) or the contraction mode (mostly for spigots), Made from medium tensile carbon K1045 steel to provide maximum structural strength, Standard Woodworm Screw can be

used with these jaws, Able to be used on all NovaChucks in the range.

ITEM NO.	DETAILS	PRICE
TK-6026		\$75.00



## Nova Spigot Jaws

Specially designed to provide a strong grip both in the contracting (gripping round or square spigots) and in the expanding mode with up to 10" long work piece. Features standard on all NOVA Jaws: Full Cross Function: Only NOVA Chucks give you the same jaw fixing system and same insert/adaptor system across all chuck models. This means all accessory jaws in the range fit all the chucks in the range, including older chuck models, giving you the

ultimate flexibility. In buying a NOVA chuck, you can be confident that whether you want to move up or down the range, any accessories you have invested in will fit. Special Dovetail Profile: NOVA chucks have been especially designed so the jaws will cut into the wood, grip firmly in the contraction mode and provide high tear out strength.

ITEM NO.	DETAILS	PRICE
TK-SP35	35mm	\$75.00
TK-SP45	45mm	\$96.00



## Nova Mini Jaws

Nova Mini jaws set is designed to enrich Nova jaw offering in mini turning area. They are ideal to use on Nova Midi chuck for midi/mini work. A great range of smaller projects can be mounted and turned using either the expansion mode (mostly for bowls) or the contraction mode (mostly for spigots).

ITEM NO.	DETAILS	PRICE
TK-JS20N	20mm	\$64.00

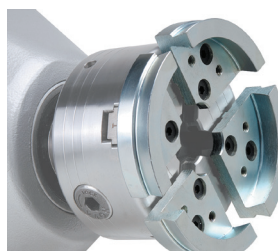


## Nova Jaw Set

Replace the standard 50mm jaw sets that come with the Nova chucks for these 25mm Jaws for working with smaller pieces. They can be used on small work with 9.5mm to 32mm spigots, as a type of pin chuck with 25mm capacity, for expanding dovetail work on bowls up to 152mm and for 12.7mm to 25mm square blanks. Fitting to either the SN2 or G3 chuck, these smaller jaws can be swapped out quickly, saving money on buying

several chucks, they are constructed of 1045 high tensile steel for precise closing, durability and long life.

ITEM NO.	DETAILS	PRICE
TK-JS25N	25mm	\$75.00



## Nova Large Jaws

One of our most popular jaws to mount 12"-14" bowls! The 100mm jaw sets are designed for an expanded dovetail grip, reverse dovetail grip for gripping footed bowls, limited spigot facility (up to 6" long) and provision to mount false wooden jaws. They are made for a larger range of work than the standard 50mm jaws or Step Jaws.

ITEM NO.	DETAILS	PRICE
TK-JS100N	100mm	\$85.00



## Nova Jumbo Bowl Jaw

Designed to handle very large work up to 740mm (29") in diameter.

ITEM NO.	DETAILS	PRICE
TK-JS130N	130mm	\$96.00



## Nova Long Nose Jaws

This unique long nosed jaws set has a 50mm 2" rise above their mounting base means very long reach deep inside of bowls. Tremendous holding power externally and internally - very versatile!

ITEM NO.	DETAILS	PRICE
TK-6017	75mm	\$107.00



## CHUCK JAWS



### Nova Soft Jaws

The Nova Soft Jaws allow the user to shape their own jaws out of this softer, more malleable material. This is great for smaller projects where the standard metal jaws may create indentations and mar the surface of the turning.

ITEM NO.	DETAILS	PRICE
TK-6021		\$35.00

### Nova 4 Piece Jaw Set



This package comes with 4 sets of jaws in the one box! The Nova 4 Piece Jaw Set adds even greater versatility to your NOVA G3 and Super Nova2 chucks, filling in the gaps left between 50 mm and 70 mm jaws. Mini jaw set includes one of each of the following: 20mm Mini Jaws, 70 mm Jaws, Mini Spigot Jaws, and Mini Step Jaws.

Machined from a single solid piece of 1045 high tensile steel, you are guaranteed to receive precise closing, durability, and a long life from each of jaw sets. Universal Mini Spigot Chuck Jaw Set has a long nose to allow for very powerful spigot grip for smaller work such as lace bobbins. Universal Mini Three Step Chuck Jaw Set has three steps providing optimum gripping of three base sizes with minimal crush damage to the wood, and has an internal spigot grip to hold small unsupported or supported spindle work. A 70mm Universal Chuck Jaw Set is perfect for bowls and spigot projects with expanded and reverse dovetail design. The 20mm Universal Mini Chuck Jaw Set is ideal to use on midi and mini lathes to hold and turn small bowls and unsupported small spigot pieces.

ITEM NO.	DETAILS	PRICE
TK-6027		\$229.00

## LATHE TOOLS AND ACCESSORIES

### Nova Faceplate Ring for Nova Chucks



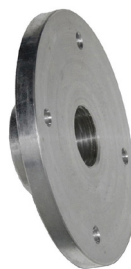
Faceplates have always been regarded as a safe and secure holding method, however they are a slower mounting method (especially when compared to your Nova scroll action chucks). Now you can have the best of both worlds!

The Nova Faceplate Rings offer the same secure holding power of a faceplate, combined with the quick convenience of your chuck. Three Sizes: 50mm (fits standard 50mm jaws),

Faceplate diameter 76mm; 100mm (fits 100mm jaws), faceplate diameter 127mm; 130mm (fits 130mm jaws), faceplate diameter 159mm.

Features and Benefits: Convenient - The Faceplate Rings fit directly into your Nova Chuck (appropriate jaw needs to be in the chuck) You don't have to remove the chuck from your lathe (as you would with traditional faceplate mounting), Fast - Fast Mounting Method for bowl blanks, Woodworm Alternative - Best Alternative to your woodworm screw mounting, which is only recommended for smaller bowls. -Strong - It is a strong mounting method, even with irregular sized.

ITEM NO.	DETAILS	PRICE
TK-6000	50mm	\$52.00
TK-6001	100mm	\$75.00
TK-6002	130mm	\$118.00



### Nova Faceplate

The Nova Faceplate has a 1" x 8 tpi thread and 76mm diameter. It is made of cast iron that has been machined so is balanced and will not flex. Faceplates are designed to initially hold larger item, or items that may be out of balance securely. The 1"x 8 tpi thread suits the Nova Comet II lathe and other lathes with the same headstock thread. Specifications: Thread: 1" x 8TPI (Suitable for NOVA Comet II, other lathe brands with 1"8 Thread).

ITEM NO.	DETAILS	DETAILS	PRICE
TK-9029	76mm (3")	1" x 8tpi	\$64.00
TK-9030	150mm (6")	1" x 8tpi	\$75.00



### Carbatec Steel Faceplate

One of the things that we at Carbatec get asked for all the time are quality faceplates. We have finally found some that fit the bill. The workpiece or blank is screwed onto the faceplate using a selection of the many pre-drilled holes to ensure a solid a firm grip. The faceplate is then screwed onto the headstock thread of the lathe, however these faceplates are not suitable for turning in reverse, for finishing or sanding.

ITEM NO.	DETAILS	DETAILS	PRICE
CFP-75-114	75mm	1-1/4" x 8tpi	\$19.00
CFP-75-M30	75mm	M30 x3.5mm	\$19.00
CFP-100-114	100mm	1-1/4" x 8tpi	\$22.00
CFP-100-M30	100mm	M30 x3.5mm	\$22.00
CFP-150-114	150mm	1-1/4" x 8tpi	\$45.00
CFP-150-M30	150mm	M30 x3.5mm	\$45.00



### Nova Morse Taper Aligner

Nova Morse Taper 2 used for checking the alignment of morse tapers with lathes that have a swivelling headstock.

ITEM NO.	DETAILS	PRICE
TK-2MTNA		\$36.00



### Robert Sorby Hollow Revolving Centre Set

This set features seven accessories and a revolving centre, all housed in foam in a sturdy case. The set features a stub morse taper fitting and ejector tool.

ITEM NO.	DETAILS	PRICE
RSB-LDRCK-1	No. 1 MT	\$166.00
RSB-LDRCK-2	No. 2 MT	\$166.00



## Nova Centre System

This unique combination centre system provides a high quality, comprehensive tailstock support for virtually all spindle turning requirements. It has over 7 functions in one handy unit. Precision machined and 3 bearings for maximum long life. Features & Benefits: Fast,

precise and powerful tailstock support system, Designed for the tough demands of modern woodturning, Versatile - over 6 functions in one handy unit, Quick change tapers. Fast mounting of centre pieces, Long life quality triple bearing system, Fits all lathes with standard MT tailstock quill, Includes unique stepped cone system as standard, allowing ultra fast and convenient mounting of work, Can handle both heavy and delicate work, Can handle both hard and soft woods, Hollow centre allows the user to drill through centre - great for cable access for lamps etc, Instruction manual included standard parts: 1 quick change Morse Taper (2MT), Fits all Nova lathes and other lathes have 2MT, However, for lathes with 1 or 3 MT, by using appropriate ada

ITEM NO.	DETAILS	PRICE
TK-CENTRE		\$118.00



## Nova Tailstock Chuck Adaptor

The Nova Tailstock Chuck Adaptor has been developed to assist the woodturner with everyday turning, by aiding with alignment of the workpiece, as well as providing support for larger workpieces. When using

a vacuum chuck, remove the chuck from the headstock, and fit it to the chuck and workpiece to the adaptor to the tailstock. By doing this, the workpiece will be aligned correctly to the vacuum chuck, and the first chuck can then be removed once the vacuum chuck is engaged. Specifications: 1-1/4" 8TPI RH, made from medium tensile carbon K1045 steel to provide maximum structural strength, fits all Nova chucks and Nova lathe tailstocks, only for use when the lathe is not powered.

ITEM NO.	DETAILS	PRICE
TK-5016		\$48.00



## Carbatec Ball Bearing Live Centre

Economy ball bearing live centre.

ITEM NO.	DETAILS	PRICE
MCL-201	No. 1 MT	\$22.00
MCL-202	No. 2 MT	\$22.00



## Carbatec 4 Spur Drive Centre

Economy four prong drive centre.

ITEM NO.	DETAILS	PRICE
MCL-221	No. 1 MT	\$17.00
MCL-222	No. 2 MT	\$17.00



## Carbatec Morse Reducer

Enables you to use No. 1 Morse taper chucks, live centres, etc in lathes fitted with no. 2 Morse taper spindles.

ITEM NO.	DETAILS	PRICE
16002	No. 1 to No. 2 MT	\$26.00



## Carbatec Multi-Spur Drive Centre

Steb style centre - Fitted with a spring loaded centre tip, Ideal for brittle materials where minimum pressure against the face of your material is advantageous. Can also be used for off-centre turning.

ITEM NO.	DETAILS	PRICE
DC-0200	No. 2 MT	\$47.00



## Robert Sorby Stebcentre

Fitted into the headstock of the lathe, the Robert Sorby Stebcentre holds the workpiece safely and securely. There are several points of contact around the outside of the stebcentre rather than the standard 4 aggressive teeth that other drive centres traditionally have which can cause splitting. The spring loaded centre allows the tail stock to be backed off slightly, while still having the workpiece still engaged, this allows the user to view the job without removing it completely.

ITEM NO.	HEAD DIA.	MORSE TAPER	PRICE
RSB-LSTB100	1/2"	No.1	\$96.00
RSB-LSTB150	7/8"	No. 1	\$96.00
RSB-LSTB250	1/2"	No. 2	\$96.00
RSB-LSTB200	7/8"	No. 2	\$96.00
RSB-LSTB232	1-1/4"	No. 2	\$112.00



## Robert Sorby Revolving Stebcentre

The Robert Sorby revolving steb centres have unique features. The spring loaded centre allows the tail stock to be backed off slightly, while still having the workpiece still engaged. Unlike other steb centres, there are several teeth around the circumference providing a secure fixing, other steb centres traditionally have large teeth which can cause splitting.

ITEM NO.	HEAD DIA.	MORSE TAPER	PRICE
RSB-LRCSTB100	7/8"	No.1 MT	\$112.00
RSB-LRCSTB132	1-1/4"	No.1 MT	\$128.00
RSB-LRCSTB250	1/2"	No. 2 MT	\$112.00
RSB-LRCSTB200	7/8"	No. 2 MT	\$112.00
RSB-LRCSTB232	1-1/4"	No. 2 MT	\$128.00



## Robert Sorby Chuck Drive Stebcentre

The Robert Sorby Steb Drive has a spring loaded centre point, allowing for accurate and specific positioning, and repositioning onto the Centre. Then as the tailstock is wound in, the teeth around the circumference of the Centre bites into the timber, giving the grip to be able to turn the material ready for turning. These teeth give an even spread of pressure reducing the chance of the timber splitting.

ITEM NO.	DETAILS	PRICE
RSB-LSTBCHUCK13	1/2"	\$96.00
RSB-LSTBCHUCK	7/8"	\$96.00
RSB-LSTBCHUCK32	1-1/4"	\$112.00

## LATHE TOOLS AND ACCESSORIES

### Robert Sorby Modular Tool Rest Stem



The Robert Sorby modular stems and tool rests allows a woodturner to collect a number of tool rests at different sizes at a reasonable cost. Made of hardened steel to limit the chance of nicks and dents that can affect their use. The same stems are compatible with the Precision Boring System.

ITEM NO.	DETAILS	PRICE
RSB-L765-S16	5/8"	\$21.00
RSB-L765-S13	1/2"	\$21.00
RSB-L765-S19	3/4"	\$21.00
RSB-L765-S22	7/8"	\$21.00
RSB-L765-S24	1"	\$21.00
RSB-L765-S25	25mm	\$21.00
RSB-L765-S28	28mm	\$27.00
RSB-L765-S30	30mm	\$21.00

### Robert Sorby Internal Bowl Crossbar



Robert Sorby Internal Bowl Crossbar 228mm (9") For use with the Robert Sorby Modular Tool Rest System.

ITEM NO.	DETAILS	PRICE
RSB-L767	9"	\$54.00

### Robert Sorby External Bowl Crossbar



Robert Sorby External Bowl Crossbar 228mm (9") For use with the Robert Sorby Modular Tool Rest System.

ITEM NO.	DETAILS	PRICE
RSB-L767E	9"	\$54.00

### Robert Sorby Crossbar



Sometimes all you need is a straight crossbar for a tool rest. This simple design is made with the same quality material as all other Sorby products and provides simplicity of design that can be used in conjunction with the modular stem system.

ITEM NO.	DETAILS	PRICE
RSB-L766-4	4"	\$37.00
RSB-L766-6	6"	\$44.00
RSB-L766-9	9"	\$50.00

### Robert Sorby Box Scraper Platform



Robert Sorby turner's table is designed for use with the Robert Sorby Modular Tool Rest System. The platform provides support for the turning tool to be easily and safely used within the vessel. The hardened steel materials limit the chance of nicks and dents that can affect their use.

ITEM NO.	DETAILS	PRICE
RSB-L768		\$23.00



### Nova Tool Rest

Features 25.4mm shank for strong support. 100mm wide tool rest made of ribbed cast iron for maximum rigidity. Smaller size is perfect for smaller projects.

ITEM NO.	DETAILS	PRICE
TK-REST-100MM	100mm	\$53.00

### Nova Tool Rest Bar



Nova 9026 4" Tool rest Bar is part of the modula Nova Tool Rest System, a flexible system which allows you to mix and match your Tool rest Posts and Supports to create the perfect Tool rest for your needs. Requires one of Nova Tools Rest Posts (additional purchase). This threaded bar enables you to use different Nova Tool rest Posts as needed. The 4"/101mm length, is perfect for most Mini Lathes or when you want more precise tool control for

smaller work on your larger lathe. Made from cast steel with a stainless steel top rod for durability and smooth operation.

ITEM NO.	DETAILS	PRICE
TK-9026	4"	\$49.00
TK-9027	6"	\$64.00
TK-9028	12"	\$85.00

### Nova Tool Rest Post



Nova 9024 5/8" X 3-1/4" Machined Steel Tool Rest Post fits most Mini Lathe Tool Supports. This is part of the modular Nova Tool Rest System, a flexible system which allows you to mix and match your Tool rest Posts and Supports to create the perfect Tool rest for your needs. Requires one of the Nova Tool Rest Bars (additional purchase). This threaded post enables you to unfasten different Nova Tool rest bars and attach as needed. The

5/8" shaft and is 3-1/4"/196mm long, can fit to most Mini Lathe Tool side shafts.

ITEM NO.	DETAILS	PRICE
TK-9024	5/8" x 3-1/4"	\$18.00
TK-9025	1" x 5"	\$24.00
TK-9031	1" x 8"	\$27.00

### Nova Tool Rest Collar



Features at a glance: A simple collar to provide a fixed height for the Tool rest, saving the turner from having to find the same height again each time. Enables the turner to return to a preset height again instantly and gives a consistent, reliable, set height where height accuracy is critical. 1" internal diameter collar, for all lathes with a 1" Tool rest shaft. Uses: Indexing, Bowl profiling, Great for beginners. Standard Equipment: Collar Ring, Grub Screw, Fibre wash, Allan key.

ITEM NO.	DETAILS	PRICE
TK-COLLAR		\$35.00





## Nova Bowl Tool Rest

The tool rest is one of the most important features on any lathe. The rest should allow for maximum flexibility of chisel movement and provide adequate chisel support as close to the cutting edge as possible. All the tool rests manufactured come with the standard size shank of 1" to fit the Nova Lathes. Nova Woodsurfer Bowl Rest - The Nova Woodsurfer bowl rest provides rock solid stability for turning of all bowls. Made from high quality

cast iron, the Woodsurfer is the perfect companion to the large bowl capacities on both the Nova 1624 and the Nova XP DVR lathes. Features at a glance: Dependable Performance. Solid cast iron upper section, CAD designed and tested for optimum strength. The NOVA Woodsurfer Bowl Rest is cast from a high grade cast iron with solid section thickness and CAD generated gussets at critical points. Designed to withstand extremely high stresses with practically no distortion.

ITEM NO.	DETAILS	PRICE
TK-REST-BOWL		\$96.00



## Carbatec 3-Point Steady Rest

Specially designed to suit MC900 and MC1100 lathes of any brand, and Carbatec's new look WL-900H and WL-1100P. This steady allows you to safely turn longer, thinner projects and features three sealed bearings, with a 70mm diameter capacity, a 30mm cast iron block to boost the centre height for MC1100 lathes and an overall height (without the block) of 260mm.

ITEM NO.	DETAILS	PRICE
MCREST		\$69.00



## Rockler Lathe Tool Holder

Wouldn't it be good to have all your turning tools close at hand, and not need to reach for them. Specially designed to fit most flat bed lathes to hold up to 6 standard sized turning tools, and 6 miniature sized turning tools around the circumference and other tools and accessories in the centre. With a 12" diameter, the tray rotates to make tool selection simple and easy, with a gap between the larger and smaller sized chisels giving

good access to the accessories positioned in the middle, without the need to reach over tools.

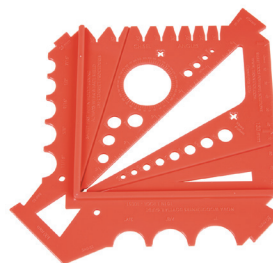
ITEM NO.	DETAILS	PRICE
RK-31107		\$66.00



## Nova Lathe Handwheel

Used on the outboard end of the headstock spindle of Nova lathes. It can be used to position work by hand or to slow down the spindle by hand.

ITEM NO.	DETAILS	PRICE
TK-HANDWHEEL		\$64.00

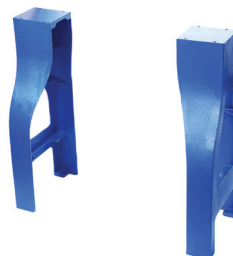


## Nova 10 in 1 Chuck Gauge

Combines all the most commonly used woodturning gauges into one efficient device. The complete 10 in 1 tool, The only gauge available for NOVA Chuck jaw dovetail measurement, Easy to use, Made of heavy duty polycarbonate. Dovetail Gauge - A fast and easy way to create and check a dovetail recess. Perfect companion for your NOVA chuck. Centre Finder - Simple and accurate way for finding the centre on your workpiece. Bowl Chisel Gauge

- Handy tool checks different angles for bowl chisels. Diameter Gauge - Effortlessly determine the different diameter size in a workpiece. Ideal for cutting beads. Dowel Gauge - Dowelling can turn dicey when the dowels don't measure up! This gauge helps. Angle Checker - 8 commonly used angles. Checks cutting angles of chisels, knives, blades and scissors. This gauge is also a: Furniture dovetail marking out tool, Ruler scale, Protractor, Faceplate Mark out Tool.

ITEM NO.	DETAILS	PRICE
TK-10051		\$22.00



## Carbatec Cast Iron Legs

Cast Leg (both legs included) Dimensions: 790mm high x 340mm wide at base x 150mm wide at top Pack size: 810mm x 380mm x 300mm Weight: 48Kg.

ITEM NO.	DETAILS	PRICE
MCLEG		\$309.00



## Nova 47050 Comet II Accessory Stand

The Nova 47050 Comet II Accessory Stand provides a free standing platform for your Nova 46300 Comet II Midi Lathe.

The rugged tubular steel design provides strength without adding a lot of unnecessary weight, and the powder coated finish gives durability in all conditions.

The stand adjusts length wise and height wise for ultimate flexibility, adjusting from 153mm to 195mm wide on hole centres and 500mm to 809mm long on hole centres. The working height of the stand is adjustable from 622mm to 876mm with easy to use levelling feet. Product Weight 17kg, weight Capacity 99kg.

ITEM NO.	DETAILS	PRICE
TK-47050		\$343.00



## Nova Cast Iron Stand

Made from high quality cast iron, with interchangeable leg sections. These stands suit the Nova 1624, Nova DVR XP, and Nova 3000 lathes.

ITEM NO.	DETAILS	PRICE
TK-25054		\$649.00

## LATHE TOOLS AND ACCESSORIES

### Nova Bed Extension Lathe Accessory 55224



Get more from your lathe, and wood-working by adding 508mm between centres to any of these select Nova DVR 2024, DVR XP, 1624 and 1624 II Lathes. Adds 508mm between centres, easy to install, add as many extensions as you require for your project. Made from solid cast iron with CAD designed webbing throughout, providing rigid strength and stability,

and painted in the new Nova black colour, with new decaling. It works best with the 1624 II lathe but can be used on lathe models mentioned above. Includes fastenings and instructions.

ITEM NO.	DETAILS	PRICE
TK-55224		\$429.00

### Nova Lathe Bed Extension



Nova Comet Lathe Bed Extension allows the user to turn longer projects and spindles.

ITEM NO.	DETAILS	PRICE
TK-47001	Suits TK-COMET	\$214.00



### Nova Comet II Lathe Accessory Versaturn Coupler

Enables any of the Nova Comet Versaturn Accessories to be quickly, easily and securely mounted to the Comet II Midi Lathe, with reference points to guarantee a positive lock..

ITEM NO.	DETAILS	PRICE
TK-47000		\$64.00



### Nova Grinding Wheel Accessory to suit the Nova Comet II Midi Lathe

Exclusive to the NOVA Comet II Midi Lathe, the Grinding Wheel Accessory is easy to add and remove, though is one of those tools that as a woodturner is going to be one that is needed regularly, so would most likely stay fitted to the Comet II lathe. The variable speed adjustment from the lathe directly drives the grinding

wheel to reduce tool edge burn. A standard fitted 6" x 3/4" Whitestone Wheel is a good choice for the turner. Requires the TK-47000 Comet II Versaturn Coupler Accessory to attach to your Comet II Midi Lathe, this is an additional purchase.

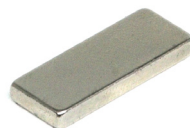
ITEM NO.	DETAILS	PRICE
TK-47002		\$107.00



### Robert Sorby Sizing Tool

Designed to fit to either the Robert Sorby 3/8" beading and parting tool or bedan to get accurate and repeatable diameters spindles up to 75mm in diameter.

ITEM NO.	DETAILS	PRICE
RSB-H970000		\$48.00



### Robert Sorby Universal Handy Magnet

Work or tool holding capabilities should not be underestimated. This universal magnet is just the right size to accomplish your holding requirements. At 25mm x 10mm x 3mm it is the right size and allows you to put it to a myriad of uses.

ITEM NO.	DETAILS	PRICE
RSB-RS380		\$17.00

## WOODTURNING CALIPERS AND DIVIDERS

### Robert Sorby Vessel Callipers



These vessel callipers are designed to measure the internal measurement of a turned object, and also for thin wall dimensioning. The straight arms are helpful when measuring narrow vessels.

ITEM NO.	DETAILS	PRICE
RSB-H9710000	10"	\$46.00
RSB-H9725000	2-1/2"	\$26.00
RSB-H975000	5"	\$32.00

### Robert Sorby Double Ended Callipers



These double ended callipers are a must for every woodturners kit, whether they are creating bowls, goblets or spindles. The large rounded shape allows them to be fitted around the shape of a turned bowl to measure the thickness of the wall, even towards the bottom, or simply measuring the thickness of an easy to get to spindle.

ITEM NO.	DETAILS	PRICE
RSB-H974000	100mm	\$30.00
RSB-H977000	177mm	\$42.00

### Robert Sorby Inside/Outside Callipers



These inside/outside callipers have long slender arms to enable it to get into slim projects. Once the long arms are in a vase or other object, like other double ended callipers, the dimension being measured at one end is shown at the other end.

ITEM NO.	DETAILS	PRICE
RSB-H976000	6"	\$35.00
RSB-H978500	8-1/2"	\$49.00

### Veritas Thickness Calipers



While designed primarily for woodturners, these calipers have many uses, with their long straight arm helpful with taller vases that standard shaped calipers cannot get into. The spacing nut can be adjusted for thickness to 140mm, making them an ideal addition to woodturners kit, especially those doing tall slender turning.

ITEM NO.	DETAILS	PRICE
05N22-01	9"	\$77.00





We've been crafting  
woodworking tools in  
Sheffield, England  
for over 200 years.

## *Robert Sorby*

As one of the world's premier manufacturers of specialist woodworking tools, we are proud to say we still craft every tool right here in Sheffield, UK. Our tools are made from the finest of raw materials, using traditional methods, with attention to detail you won't find anywhere else. Each tool is meticulously processed in stages by craftspeople of Sorby, where every single tool is cut, ground, polished, hardness tested,

sharpened, assembled and packed for shipping, – ultimately, built to provide a lifetime of use in your workshop, if not more.

With an extensive range of unique, premium tools, backed by our lifetime warranty, you need look no further for the best tools you can buy. Altogether this is what puts Robert Sorby at the top of its class. You can rely on our experience – we know tools.



# WOODTURNING

## WOODTURNING CHISEL SETS



### Robert Sorby 5 Piece Turning Tool Set

This five piece set is an extremely popular choice for novices. It offers great quality tools without spending a fortune. Presented in a beautifully crafted box. Set Includes: 3/4" Spindle roughing gouge - turns square to round. 3/8" Spindle gouge - details spindle work. 1/2" Flat skew chisel - ideal for planing and smoothing cylinder shapes. 1/8" Parting tool - for parting off work and great for detailing. 1/2" Round nose scraper - just the job for bowls, platters and spindle work.

Parting tool - for parting off work and great for detailing. 1/2" Round nose scraper - just the job for bowls, platters and spindle work.

ITEM NO.	DETAILS	PRICE
RSB-A52HS5T		\$219.00



### Robert Sorby 6 Piece Woodturning Starter Set

This is part of the Robert Sorby flagship series and one of our most popular tool combinations. Suitable for anyone into turning, from beginners through to professionals.

This set comprises six of Robert Sorby's core range. Set includes: 19mm (3/4") Spindle roughing gouge, 10mm (3/8") Spindle gouge, 10mm (3/8") Bowl gouge, 19mm (3/4") Standard skew chisel, 3mm (1/8") Parting tool, 13mm (1/2") Round nose scraper.

Supplied in a box for presentation and storage

ITEM NO.	DETAILS	PRICE
RSB-A67HS6T		\$329.00



### Robert Sorby 8 Piece Turning Tool Set

This is part of the Robert Sorby flagship series and one of our most popular tool combinations. Suitable for anyone into turning, from beginners through to professionals. This set comprises eight of Robert Sorby's core range. Included: 3/4" Spindle roughing gouge, 1/4" Spindle gouge, 1/2" Spindle gouge, 3/8" Bowl gouge, 3/4" Standard skew chisel, 3/16" Diamond

parting tool, 1/2" Round nose scraper, 1" Square scraper.

ITEM NO.	DETAILS	PRICE
RSB-A82HS8T		\$449.00



### Robert Sorby Turning Tool Set

This is part of the Robert Sorby flagship series and one of our most popular tool combinations. Suitable for anyone into turning, from beginners through to professionals.

This set is comprised of five of Robert Sorby's core range. Set Includes: 19mm (3/4") Spindle roughing gouge, 10mm (3/8") Spindle gouge, 10mm (3/8") Bowl gouge, 3mm (1/8") Parting

tool, 13mm (1/2") Round nose scraper.

ITEM NO.	DETAILS	PRICE
RSB-A5HS5TLR	5 Piece Set	\$259.00



### Robert Sorby Spindle Set with 3 Cutters

This set of 3 modular micro tools encompasses a range of the most popular micro woodturning blades. Great for a range of projects including spindle turning, hollowing and beading.

ITEM NO.	DETAILS	PRICE
RSB-A88HS3T		\$83.00



### Robert Sorby Fine Detail Spindle Turning Set

These tools are best suited as a spindle turning set. They are ideal for miniature projects including dolls house furniture, lidded boxes and other small objects. Supplied in a box for presentation and storage. Includes: 6mm (1/4") Spindle Gouge, 3mm (1/8") Spindle Gouge, 6mm (1/4") Round Nose Scraper, 6mm (1/4") Skew Chisel, 2mm (1/16") Parting Tool.

ITEM NO.	DETAILS	PRICE
RSB-A45HS5T		\$179.00



### Robert Sorby Pen Turning Set

This 3 piece set of micro turning tools is designed for the pen turner, and also those turners working with miniature to small projects. The tools that are included are ideal if you are just getting started or want a dedicated set of tools for pen turning or other small work. Includes: 8mm (5/16") Roughing Gouge, 2mm (1/16") Parting Tool, 13mm (1/2") Spindlemaster.

ITEM NO.	DETAILS	PRICE
RSB-A36HS3T		\$115.00



### Carbatec Economy Miniature Turning Chisel Set

This 3 Piece set compares favourably with European and Australian manufactured products but at half the price. Perfect for the novice who isn't sure which tools they will need in the long run. Miniature size makes this set ideal for pen turning. Set contains a 10mm spindle gouge, a 12mm skew chisel and a 2mm parting tool.

ITEM NO.	DETAILS	PRICE
TJ-3	3 Piece Set	\$45.00



### Carbatec Economy Turning Chisel Set

This 6 Piece set compares favourably with European and Australian manufactured products but at half the price. Perfect for the novice who isn't sure which tools they will need in the long run. Set contains 10mm Spindle Gouge, 13mm Bowl Gouge, 22mm Roughing Gouge, 18mm Round Nose Scraper, 20mm Diamond Parting Tool and a 25mm Oval Skew.

ITEM NO.	DETAILS	PRICE
TJ-6	6 Piece Set	\$179.00

## INDIVIDUAL WOODTURNING CHISELS

The Robert Sorby Sovereign is a beautifully engineered and ergonomically designed interchangeable handle system that not only looks good but has the perfect feel and balance.

Originally designed to address the demand for flexible handle lengths and provide alternative and practical tool storage options, the Sovereign has become a woodturning legend and industry benchmark.

The softex nonslip grip provides excellent comfort and stability, while four easily interchangeable collets ensure the majority of Robert Sorby's vast turning tool range fit this agile system.

### Robert Sorby Sovereign Handle



The Robert Sorby Sovereign handle is the latest of the sovereign handles. They allow the unhandled Robert Sorby chisels to be fitted, giving the user confidence in their chisel through the added stability. A counter weight is available for anyone wanting a heavier handle, extensions are also available as are various sizes of collet adaptors for unhandled blades.

ITEM NO.	LENGTH	DETAILS	PRICE
RSB-SOV-12	12"	Handle Only	\$85.00
RSB-SOV-12S	12"	Comes with C10 and C13 Collet	\$100.00
RSB-SOV-16	16"	Handle Only	\$99.00
RSB-SOV-16S	16"	Comes with C10 and C13 Collet	\$113.00
RSB-SOV-22S	22"	Comes with C10 and C13 Collet	\$126.00

### Robert Sorby Sovereign Collet Adaptor



The Robert Sorby Sovereign Collet Adaptor has an outside diameter of 5/8" to fit into the sovereign handles. The inside diameter allows for unhandled tools with a shanks of this size to be securely fitted and used in this handle.

ITEM NO.	INSIDE DIA.	PRICE
RSB-SOV-C06	1/4"	\$21.00
RSB-SOV-C10	3/8"	\$21.00

### Robert Sorby Sovereign Collet to Collet



The RSB-SOV-C13 has the widest aperture for tools made from round section at 1/2" and is perfectly aligned to take 3/8" bowl gouges and fingernail bowl gouges, the 1/2" spindle gouge, fingernail spindle gouge and the long and strong spindle gouge as well as the Turnmaster. The Spiralling System and Texturing Tool also use this collet.

ITEM NO.	INSIDE DIA.	PRICE
RSB-SOV-C13	1/2"	\$21.00

### Robert Sorby Sovereign Extension



This piece extends the Sovereign handle by 100mm. This adds extra stability and safety during turning. A threaded coupler is required (RSB-SOV-TC).

ITEM NO.	DETAILS	PRICE
RSB-SOV-EXT	Extension	\$19.00
RSB-SOV-TC	Threaded Coupler	\$21.00

### Robert Sorby Tang Collet



This tool has been designed to hold many of the chisels without handles. The insert takes brass tipped grub screws to securely hold the various chisels against the flat bottom of the insert. This gives the ability to use a wide variety of chisels in the longer Sovereign handle, which can also be weighted if the user desires. Using the same handle can give a familiar feel providing extra confidence to the turner.

ITEM NO.	DETAILS	PRICE
RSB-SOV-CT		\$21.00

### Robert Sorby Sovereign Side Handle



This sovereign side handle provides that little bit more control and stability with the longer sovereign handled chisels, especially when deep hollowing.

ITEM NO.	DETAILS	PRICE
RSB-SOV-SH		\$24.00

### Robert Sorby Sovereign Counter Weight



This sovereign counter weight is used to add some weight to the end of the sovereign handles giving them added balance, especially when extending the cutter shaft to its maximum when deep hollowing.

ITEM NO.	DETAILS	PRICE
RSB-SOV-CW		\$20.00

# Robert Sorby

## INDIVIDUAL WOODTURNING CHISELS

### Robert Sorby Bowl Gouge HSS

These Robert Sorby standard bowl gouges are something every woodturner should have in their kit. They are especially good for making bowls, being good for doing massive profiling cuts or delicate finishing cuts.

ITEM NO.	DETAILS	DETAILS	PRICE
RSB-B842064	1/4"	Handled	\$69.00
RSB-B842060	1/4"	Unhandled	\$53.00
RSB-B842103	3/8"	Handled	\$85.00
RSB-B842104	3/8"	Long Series	\$95.00
RSB-B842134	1/2"	Handled	\$116.00
RSB-B842136	1/2"	Long Series	\$119.00
RSB-B842130	1/2"	Unhandled	\$93.00
RSB-B842194	3/4"	Long Series	\$148.00

### Robert Sorby Fingernail Bowl Gouge (Deep Flute)

The Robert Sorby finger nail bowl gouge has the same shaped deep flute as the standard bowl gouge, however has a different grind profile. Its grind makes it good for heavy profiling cuts and fine, delicate shearing cuts.

ITEM NO.	DETAILS	DETAILS	PRICE
RSB-B842F064	1/4"	Handled	\$77.00
RSB-B842F060	1/4"	Unhandled	\$53.00
RSB-B842F104	3/8"	Handled	\$95.00
RSB-B842F134	1/2"	Handled	\$116.00
RSB-B842F130	1/2"	Unhandled	\$93.00

### Robert Sorby Excelsior High Performance Bowl Gouge

The Robert Sorby range has been designed with the connoisseur woodturner and those who regularly turn hardwoods in mind. A plasma bonded titanium nitride finish layered over traditional triple tempered high-speed steel provides longevity and edge retention.

ITEM NO.	DETAILS	DETAILS	PRICE
RSB-B842G064	1/4"	Handled	\$89.00
RSB-B842G104	3/8"	Handled	\$107.00
RSB-B842G134	1/2"	Handled	\$134.00
RSB-B842G060	1/4"	Unhandled	\$65.00
RSB-B842G100	3/8"	Unhandled	\$84.00
RSB-B842G130	1/2"	Unhandled	\$108.00

### Robert Sorby Detail Point Tool

This Robert Sorby handled detail point tool has three facets all coming to a fine tip, making it great for detailed work on all types of turning projects from spindles to bowls.

ITEM NO.	DETAILS	PRICE
RSB-B822102	3/8"	\$48.00

### Robert Sorby Standard Spindle Gouges

These Robert Sorby standard spindle gouges are good for straight grained timbers that run parallel to the lathe, such as bed posts goblets and candle sticks.

ITEM NO.	DETAILS	DETAILS	PRICE
RSB-B840062	1/4"	Handled	\$47.00
RSB-B840102	3/8"	Handled	\$53.00
RSB-B840133	1/2"	Handled	\$65.00
RSB-B840130	1/2"	Unhandled	\$50.00
RSB-B840193	3/4"	Handled	\$90.00
RSB-B840190	3/4"	Unhandled	\$75.00

### Robert Sorby Fingernail Spindle Gouge

The Robert Sorby fingernail gouges are good for fine detailing on spindle pieces. The wing tips are profiled in a way to reduce the chance of them catching when working in confined spaces. The profile is easily maintained on the Robert Sorby Proedge sharpening system.

ITEM NO.	DETAILS	DETAILS	PRICE
RSB-B840F102	3/8"	Handled	\$53.00
RSB-B840F133	1/2"	Handled	\$65.00

### Robert Sorby Long & Strong Spindle Gouge

These Robert Sorby long and strong spindle gouges are the same as the standard spindle gouges apart from the added length. This extra length allows the user to get deeper into a workpiece.

ITEM NO.	DETAILS	DETAILS	PRICE
RSB-B841103	3/8"	Handled	\$72.00
RSB-B841133	1/2"	Handled	\$85.00

### Robert Sorby Continental Style Spindle Gouge

The Robert Sorby continental style spindle gouges are of forged construction, so have an even thickness. This gives them a fine delicate feel yet still retaining strength. This design of gouge originated in Europe, and quickly spread, proving the design to be good for spindle work.

ITEM NO.	DETAILS	DETAILS	PRICE
RSB-B839082	8mm	Handled	\$63.00
RSB-B839080	8mm	Unhandled	\$48.00
RSB-B839122	12mm	Handled	\$70.00
RSB-B839120	12mm	Unhandled	\$54.00
RSB-B839192	19mm	Handled	\$88.00
RSB-B839190	19mm	Unhandled	\$73.00
RSB-B839253	25mm	Handled	\$112.00
RSB-B839250	25mm	Unhandled	\$94.00
RSB-B839303	30mm	Handled	\$127.00
RSB-B839300	30mm	Unhandled	\$110.00



## Robert Sorby Excelsior Series Spindle Gouge



The Robert Sorby range has been designed with the connoisseur wood-turner and those who regularly turn hardwoods in mind. A plasma bonded titanium nitride finish layered over traditional triple tempered high-speed steel provides longevity and edge retention.

ITEM NO.	DETAILS	DETAILS	PRICE
RSB-B840G062	1/4"	Handled	\$52.00
RSB-B840G102	3/8"	Handled	\$59.00
RSB-B840G133	1/2"	Handled	\$74.00
RSB-B840G130	1/2"	Unhandled	\$58.00

## Robert Sorby Micro Spindle Gouge



The Robert Sorby spindle gouge is 250mm (10") in length, it is good for small projects such as dolls furniture, pens, etc. It is a good choice also for all woodturners as a general all round tool.

ITEM NO.	DETAILS	PRICE
RSB-B86106W	1/4"	\$43.00

## Robert Sorby Spindle Roughing Gouge



The Robert Sorby spindle roughing gouges are sometimes known as, or referred to as a roughing gouge. These chisels are designed to take square or rough sawn stock and turn it down to round. The shape of the chisel allows for safe cutting, its wings, or tips can be kept well back from the workpiece.

ITEM NO.	DETAILS	DETAILS	PRICE
RSB-B843193	3/4"	Handled	\$85.00
RSB-B843190	3/4"	Unhandled	\$78.00
RSB-B843325	1-1/4"	Handled	\$109.00
RSB-B843320	1-1/4"	Unhandled	\$113.00

## Robert Sorby Excelsior Series Roughing Gouge



The Robert Sorby range has been designed with the connoisseur wood-turner and those who regularly turn hardwoods in mind. A plasma bonded titanium nitride finish layered over traditional triple tempered high-speed steel provides longevity and edge retention.

ITEM NO.	DETAILS	DETAILS	PRICE
RSB-B843G193	3/4"	Unhandled	\$111.00

## Robert Sorby Spindlemaster



This Robert Sorby Spindlemaster is an important addition to every woodturners kit. It is easy to sharpen and is one of those all round chisels that can be used to plane, cove, bead and even trim end grain. Excellent results on softer, traditionally more difficult woods like pine.

ITEM NO.	DETAILS	DETAILS	PRICE
RSB-B812132	1/2"	Handled	\$67.00
RSB-B812192	3/4"	Handled	\$75.00

## Robert Sorby Standard Skew Chisel



This standard skew chisel is a well balanced heavier tool, with rounded corners to prevent it from becoming caught on the tool rest. It is great for smoothing a multitude of objects from cylinders to end grain, creating beads and even doing v-cuts.

ITEM NO.	DETAILS	DETAILS	PRICE
RSB-B810132	1/2"	Handled	\$65.00
RSB-B810192	3/4"	Handled	\$73.00
RSB-B810253	1"	Handled	\$88.00
RSB-B810250	1"	Unhandled	\$69.00
RSB-B810323	1-1/4"	Handled	\$111.00
RSB-B810320	1-1/4"	Unhandled	\$93.00

## Robert Sorby Round Skew Chisel



A light weight chisel from Robert Sorby, the round skew chisel is highly manoeuvrable, therefore making it great for production work. It is intended for spindle work, but is also a functional tool for beads, coves, highlights and other details.

ITEM NO.	DETAILS	DETAILS	PRICE
RSB-B813061	1/4"	Handled	\$44.00
RSB-B813060	1/4"	Unhandled	\$33.00
RSB-B813102	3/8"	Handled	\$47.00

## Robert Sorby Micro Round Skew



The Robert Sorby round skew is a good choice for spindle work. Its 1/4" cutting width and 10" length makes it good for quick waste removal, with the profile making it also good for fine detailing like beads, coves and highlights. The round shaft of the tool means it can be rotated on the tool rest easily to achieve these detailed cuts.

ITEM NO.	DETAILS	PRICE
RSB-B87506W	1/4"	\$43.00

## Robert Sorby Oval Skew Chisel



The Robert Sorby oval skew chisel is a well-balanced tool, its oval shape helps prevent it from becoming caught on the tool rest. They are great for smoothing a multitude of objects from cylinders to end grain, creating beads and even doing v-cuts.

ITEM NO.	DETAILS	DETAILS	PRICE
RSB-B809132	1/2"	Handled	\$65.00
RSB-B809192	3/4"	Handled	\$73.00
RSB-B809190	3/4"	Unhandled	\$56.00
RSB-B809253	1"	Handled	\$88.00
RSB-B809250	1"	Unhandled	\$69.00
RSB-B809323	1-1/4"	Handled	\$111.00
RSB-B809320	1-1/4"	Unhandled	\$93.00

# WOODTURNING

## INDIVIDUAL WOODTURNING CHISELS

### Robert Sorby Standard Parting Tool



Parting tools are used to separate the turned workpiece from the waste piece of timber. The parallel sides of the chisel makes for a strong and rigid tool. They can also be used for fine detailing such as beading and filleting.

ITEM NO.	DETAILS	DETAILS	PRICE
RSB-B830031	1/8"	Handled	\$57.00
RSB-B830030	1/8"	Unhandled	\$42.00
RSB-B830062	1/4"	Handled	\$68.00

### Robert Sorby Diamond Section Parting Tool



The Robert Sorby handled diamond section parting tool is a great choice for a parting tool. Its diamond profile means there is less material in contact with the material at any one time, this means there is limited heat build up due to the reduced surface contact, and also means there is less chance for it to bind mid cut. The narrow 4.75mm (3/16") cut also

means not too much material is removed, so those expensive or difficult to get timbers are not being wasted each time they are cut off.

ITEM NO.	DETAILS	PRICE
RSB-B831052	3/16"	\$89.00

### Robert Sorby Slim Handled Parting Tool



The narrow Robert Sorby Slim Parting Tool is a good choice for all woodturners as it removes a small amount of material, making it good for grain matching. The deep blade eliminates any flaw in the narrow blade.

ITEM NO.	DETAILS	PRICE
RSB-B830S08	1/16"	\$40.00

### Robert Sorby Slim Fluted Parting Tool



This is the Robert Sorby slim fluted parting tool. It has a narrow profile at just 2mm. The long bevel, with a flute is the cutting face, so the short bevel is the face that is sharpened. The flute and bevels on this tools means that when parting off, the tool is always doing a shear cut at 45°, making the surface look as though it has been sanded.

ITEM NO.	DETAILS	DETAILS	PRICE
RSB-B832023	2mm	Handled	\$84.00
RSB-B832020	2mm	Unhandled	\$64.00

### Robert Sorby Beading and Parting Tool



This beading and parting tool, due to its width, is a good choice for turning spigots to fit into a chuck, and other forms of turning such as beading.

ITEM NO.	DETAILS	PRICE
RSB-B833103	3/8"	\$67.00

### Robert Sorby Bedan Parting Tool



The Bedan tool is one of the most versatile in the wood turners arsenal. This one is just the right size and is versatile enough to turn small beads but is also adept at standard spindle work. Always made from high quality M2 HSS you will be pleased with your choice.

ITEM NO.	DETAILS	PRICE
RSB-B834103	3/8"	\$74.00

### Robert Sorby Round Nose Scraper



This round nose scraper has a smooth curve, so there are no corners to dig in, making this good for convex and concave surfaces. Ideal for bowls, platters and spindles.

ITEM NO.	DETAILS	DETAILS	PRICE
RSB-B820132	1/2"	Handled	\$59.00
RSB-B820192	3/4"	Handled	\$65.00
RSB-B820253	1"	Handled	\$79.00
RSB-B820250	1"	Unhandled	\$68.00

### Robert Sorby Square End Scraper



This handled square end scraper is an excellent scraper for convex and straight or flat shapes. The end can be shaped to suit a particular profile.

ITEM NO.	DETAILS	PRICE
RSB-B823132	1/2"	\$59.00
RSB-B823192	3/4"	\$65.00
RSB-B823253	1"	\$79.00

### Robert Sorby Curved HSS Scraper



This Robert Sorby curved scraper has a profile that is good for creating, smoothing and blending curved surfaces. This can be done to curved surfaces from bowls to round bottomed bowls. They are capable to take an aggressive cuts down to delicate refining cuts.

ITEM NO.	DETAILS	DETAILS	PRICE
RSB-B828192	3/4"	Handled	\$74.00
RSB-B828190	3/4"	Unhandled	\$56.00

### Robert Sorby Box Scraper



The Robert Sorby handled box scraper has been designed to cut the parallel side walls of end grain boxes. It has a small radius at the end giving a smooth intersection between the side and base of the turned box.

ITEM NO.	DETAILS	PRICE
RSB-B829192	3/4"	\$74.00

## Robert Sorby Round/Side Cut Scraper



The Robert Sorby round/side cut scraper is a good choice for under-cutting rims of vessels, as well as blending the base to parallel walls of vases and vessels.

ITEM NO.	DETAILS	DETAILS	PRICE
RSB-B824192	3/4"	Handled	\$69.00
RSB-B824190	3/4"	Unhandled	\$59.00

## Robert Sorby Diamond/Side Cut Scraper



The Robert Sorby handled diamond/side scraper is a great choice for vessels for straight or parallel sides. The 85°, angle at the end means the bottom and side will not be overcut.

ITEM NO.	DETAILS	PRICE
RSB-B825192	3/4"	\$69.00

## Robert Sorby Hardwood Scraper



The Robert Sorby handled hard wood scraper has a negative rake on the bevel, this minimises the risk of tear out, the result is a highly polished surface on all species of timbers. This scraper works well also on spindle projects.

ITEM NO.	DETAILS	PRICE
RSB-B821192	3/4"	\$78.00

## Robert Sorby Bowl Finishing Outboard Scraper



Robert Sorby have created the handled Bowl Finishing Outboard Scraper for finishing turned projects for those lathe where the headstock can be rotated. The profile design of the chisel means it is then suited to work from this different angle.

ITEM NO.	DETAILS	PRICE
RSB-B800704		\$155.00

## Robert Sorby Full Round Scraper



Robert Sorby have created the handled Bowl Finishing Outboard Scraper for finishing turned projects for those lathe where the headstock can be rotated. The profile design of the chisel means it is then suited to work from this different angle.

ITEM NO.	DETAILS	PRICE
RSB-B800404		\$155.00

## Robert Sorby Bowl Finishing Inboard Scraper



Robert Sorby have created the handled Bowl Finishing Inboard Scraper for finishing turned projects when mounted in the standard inboard position on your lathe.

ITEM NO.	DETAILS	PRICE
RSB-B800804	1-1/2"	\$155.00

## Robert Sorby Square Nose Scraper



Robert Sorby have created the handled Square Nose Scraper for finishing convex and flat bottom projects. Constructed from Quality M2 HSS materials in Sheffield, you are assured you are getting the very best tool for the job, made by the leaders in turning tool design and manufacture.

ITEM NO.	DETAILS	PRICE
RSB-B801105		\$118.00

## Robert Sorby Handled Crush Grind Tool



The Robert Sorby Crush Grinder is the tool needed for turning salt and pepper mills using a crushgrind mechanism. The step of the tool gives the required recess for the mechanism to sit inside the mill.

ITEM NO.	DETAILS	PRICE
RSB-B895CGH		\$55.00



## Robert Sorby HSS Ring Tool



Designed specifically for end grain hollowing. The dual bevels allow for hollowing of internal surfaces and flat bottomed vessels. These tools produce unrivalled surface finish on end grain. Ideal for goblets and egg cups. Comes complete with full instructions.

ITEM NO.	DETAILS	DETAILS	PRICE
RSB-B845130	1/2"	Unhandled	\$62.00

## Carbatec HD Brass Ferrules



Guaranteed to never split. Chamfered on the outside at one end for handling comfort and chamfered on the inside of the other end for easy installation. Inside diameter: 22mm. Outside diameter: 25mm. Length: 17mm. Sold in pairs.

ITEM NO.	DETAILS	PRICE
F111B	22mm	\$8.00



## Robert Sorby Brass Ferrule

Replacement ferrule for Robert Sorby and other chisels.

ITEM NO.	DETAILS	PRICE
RSB-HF15B	15mm	\$1.00
RSB-HF19B	19mm	\$2.00
RSB-HF22B	22mm	\$2.00
RSB-HF32B	32mm	\$4.00



## INDIVIDUAL WOODTURNING CHISELS



### Robert Sorby Hollowmaster

The Hollowmaster has a swan neck design making it good for small turned objects. It has a flat underneath side for added stability, this shank can get into mid sized to large apertures allowing undercutting that a straight chisel cannot do. The cutter can swivel, giving that little bit of added reach.

ITEM NO.	DETAILS	PRICE
RSB-SOV-RS230	Unhandled	\$93.00
RSB-RS230KT	Handled	\$110.00



### Robert Sorby Midi Hollowmaster

The SOV-RS130 multi-tip hollowing tool has proven to be one of Robert Sorby's most versatile tools. It features a 1/2" flat underneath side to the shank that gives added stability and interchangeable tips make it capable of multiple applications. Sovereign compatible, it easily and quickly mounts ready for use to hollow out vessels and vases with a minimum aperture of 13mm (1/2"). The two included cutters are ideal for hollowing out forms.

ITEM NO.	DETAILS	PRICE
RSB-SOV-RS130	Unhandled	\$80.00



### Robert Sorby Multi-Tip Hollowing Tool

This tool can be used on both end and side grain. The flat section of the shaft of the tool rests on the tool rest giving a stable and sturdy feel for the chisel. The cutters can be swivelled for undercutting bowls with small apertures..

ITEM NO.	DETAILS	PRICE
RSB-RS200KT		\$127.00



### Robert Sorby Round End Swivel Tip

The Robert Sorby Round End Swivel Tip is a good tool for undercutting the lip of a vessel or bowl. It quickly removes material, and can be positioned at various angles to suit a particular job. HSS tip pictured.

ITEM NO.	DETAILS	PRICE
RSB-RS211C	HSS	\$23.00
RSB-RS211GC	Excelsior	\$26.00



### Robert Sorby Side End Swivel Tip

The Robert Sorby side end swivel tip is a great replaceable cutter for removing waste quickly. It fits to the Multi-tip hollowing tool or deep hollowing system and can be swivelled for undercutting or positioned straight for normal plunge cutting. Sharpening is done with a diamond file or honing stone. The cutter is honed across the top face of the cutter. HSS tip pictured.

ITEM NO.	DETAILS	PRICE
RSB-RS212C	HSS	\$23.00
RSB-RS212GC	Excelsior	\$26.00



### Robert Sorby Round Scraper Tip

The Robert Sorby Full Round Cutter is an ideal all round cutter for internal and external shapes. Turned on an angle, it gives a slicing action, and a beautiful finish. Sharpening is done with a diamond file or honing stone. The cutter is honed across the top face of the cutter. HSS tip pictured.

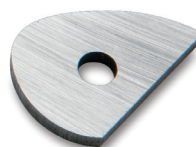
ITEM NO.	DETAILS	PRICE
RSB-RS230C	HSS	\$23.00
RSB-RS230GC	Excelsior	\$28.00



### Robert Sorby HSS Cove Cutter

The Robert Sorby cove cutter is another replaceable cutter for the Multi-tip Hollowing Tool. This one has a cove profile in two different sizes. A diamond file or honing stone is used to hone these types of cutters across the top face. Regular honing to maintain the edge will prolong the life of this cutter.

ITEM NO.	DETAILS	PRICE
RSB-RS235C	3/8" - 5/8"	\$28.00
RSB-RS236C	3/8" - 5/8"	\$28.00
RSB-RS238C	1/4" - 1/2"	\$28.00
RSB-RS239C	1/4" - 1/2"	\$28.00



### Robert Sorby Teardrop Scraper

The Robert Sorby small tear drop cutter provides a multi-faceted, highly efficient cutting edge. The shape of the cutter effectively converts the tool into a round, half-round or square scraper suitable for use on the inside or outside of small bowls, platters and hollow forms. Use the straight edge on outside curves and the rounded shapes for internal curved shapes. A

great all rounder that supports traditional scraping and shear scraping techniques. Use this cutter on the Chattertool, or Midi Multi-tip Hollowing System or Deep Hollowing System. Sharpening is achieved by honing the face of the cutter with a diamond file or honing stone. Regular honing will maintain the sharp edge and extend the useable life of the cutter.

ITEM NO.	DETAILS	DETAILS	PRICE
RSB-RS222	Small	HSS	\$19.00
RSB-RS200C	Medium	HSS	\$28.00
RSB-RS213C	Large	HSS	\$31.00
RSB-RS200GC	Medium	Excelsior	\$33.00



### Robert Sorby Bullet Cutter

The Robert Sorby large tear drop cutter is a great replaceable cutter for the rapid removal of material. It fits to the swan neck hollowing tool and swivel tip probe and can be swivelled to get the desired profile for cutting. Sharpening is done with a diamond file or honing stone. Regular honing should be done to maintain the edge, and extending the useable life of the cutter. The cutter is honed across the top face of the cutter.

ITEM NO.	DETAILS	PRICE
RSB-RS232C	HSS	\$19.00

'Woodturning is without a doubt an addictive activity. The cut of sharpened steel on timber creating long spiraled shavings and fine hair-like slivers captures the imagination and fires creativity. Add to this the pleasure of reducing rough timber blanks into beautiful, practical objects and it's easy to see why so many get so much satisfaction from woodworking!'

- Robert Sorby



## Robert Sorby Chatter Tool

Chattertool patterns add a neat, random decoration on end grain like box lids. These are created by using the Robert Sorby chattertool which comes with two different double-ended chattering tips and a handy scraper cutter. Chatter patterns are created by causing the spring steel tips to vibrate against the wood and can be changed by altering the variables: the type of wood, whether working on, below or above centre, the speed of the lathe,

the amount the tip extends from the chattertool, the shape of the chatter-tool tip. This random nature enables the turner to produce some exquisite, yet unique decorations.

ITEM NO.	DETAILS	PRICE
RSB-RS215KT	Tool with Kit	\$109.00
RSB-RS216	Tool Only	\$93.00



## Robert Sorby HSS Square and Point Cutter

This Robert Sorby double ended cutter is spring loaded into a chatter tool, giving a unique decorative pattern to end grain only. Alternate patterns are achieved by adjusting cutter lengths, Changing cutter shape, Altering lathe speed, Traverse or stationary cuts, and Cuts on, above or below centre.

ITEM NO.	DETAILS	PRICE
RSB-RS220		\$11.00



## Robert Sorby HSS Domed and Hollow Cutter

This Robert Sorby double ended cutter is spring loaded into a chatter tool, giving a unique decorative pattern to end grain only. Alternate patterns are achieved by Adjusting cutter lengths, Changing cutter shape, Altering lathe speed, Traverse or stationary cuts, and Cuts on, above or below centre.

ITEM NO.	DETAILS	PRICE
RSB-RS221		\$11.00



## Robert Sorby Shallow Hollowing Tool

The Robert Sorby shallow hollowing tool has been designed for hollowing smaller projects. This chisel will work with apertures as small as 10mm.

ITEM NO.	DETAILS	PRICE
RSB-B850001	14"	\$62.00
RSB-B851001	14"	\$62.00



## Robert Sorby General Purpose Cutter

The Robert Sorby General Purpose Cutter is a small cutter designed for the removal of waste material when using the smaller Swan Neck and Swivel Tip probe tools. This general purpose cutter is ideal for end grain use on shallower depth projects.

ITEM NO.	DETAILS	PRICE
RSB-851C	HSS	\$19.00



## Robert Sorby Wall Thickness Gauge

A thin or delicate wall can make for a beautiful bowl, vase or vessel. Measuring this wall can sometimes be very difficult. This Robert Sorby wall thickness gauge attaches the medium hollowing tool RSB-B851001, and allows a wall of a predetermined thickness to be turned easily and quickly.

Image shows the Robert Sorby Hollowing Tool (RSB-B851001) fitted with a Robert Sorby Wall Thickness Gauge (RSB-B854).

ITEM NO.	DETAILS	PRICE
RSB-B854	14"	\$33.00

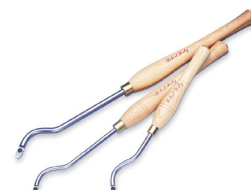


## Robert Sorby Cutter Holder

The Robert Sorby Cutter Holder securely holds tips and cutters to allow sharpening and honing, keeping the users fingers well away from grinding belts or wheels. Holding small and odd shaped cutters is often very difficult, this holder solves that problem. The Holder is shown with two cutters attached ready for honing, it does not come with cutters. Please note: no

cutters are provided with the Robert Sorby Cutter Holder.

ITEM NO.	DETAILS	PRICE
RSB-W472		\$19.00



## Robert Sorby Swan Neck Hollowing Tool

This tool can reach those hard to reach areas of turned vases that have a small aperture, or area that a straight chisel cannot reach. The 20" version has been designed for use on end grain on shallow to medium projects. The 24" version is produced from a substantial section steel, making it more suitable for both end grain and side grain working.

ITEM NO.	DETAILS	PRICE
RSB-B855003	20" (500mm)	\$69.00
RSB-B859004	24" (600mm)	\$93.00



## Robert Sorby Hollowing Tool

This Robert Sorby 3/16" hollowing tool allows it to be inserted into small apertures, down to as small as 5mm. This is great for those smaller jobs that the larger tools just cannot get into.

ITEM NO.	DETAILS	PRICE
RSB-B87305W	3/16"	\$43.00

## INDIVIDUAL WOODTURNING CHISELS

### Robert Sorby Ultima Hollowing System

The best hollowing system available! It works for end grain work in both wet and dry timbers. The self-clearing head design allows any waste material to be quickly dispersed so as not to become clogged up, or impede vision. The articulated links allow the head to be set to various configurations allowing almost infinite positioning of the cutters, for hollowing this link system



can be removed and the cutter fitted straight to the shaft giving it extra strength. The head can be moved forward and back to expose more or less of the cutter, with approximately 1/3 of the cutter being exposed. The round cutter can be rotated when the each third becomes dull. This has a 16mm (5/8") shaft and can be used to hollow to a massive 400mm. The sovereign handle allows the shaft to be extended as required. It can also hold any 5/8" shaft tools, not just the ultima shaft, for those wishing to expand their tool range. 1/2" and 3/8" adaptors are also provided to allow smaller tools to be fitted giving that little bit extra flexibility. A side handle is also available for deep hollowing, including a counter weight to gain that extra weight and balance of the handle. Extra links are available for deep back cutting of bowls and vases.

ITEM NO.	DETAILS	PRICE
RSB-SOV-16S-ULTS	16"	\$346.00
RSB-SOV-22S-ULTM	22"	\$388.00

### Robert Sorby Ultima Hollowing System

Arguably one of the best hollowing systems on the market, it works on both dry and wet end grain. Its self clearing head means that all of the wasted is ejected away from the head, so it is not going to clog up, or impede vision. This is the shank, tools and cut-



ter only, it is designed to be fitter with the sovereign handle, a shop made handle or fitted into a jig. Ideal for hollowing, angle the links around, and it can then undercut the lips of bowls and other vessels.

ITEM NO.	DETAILS	PRICE
RSB-SOV-RSULTM	Medium	\$263.00
RSB-SOV-RSULTS	Small	\$236.00

### Robert Sorby Ultima Hollowing System Torx Key

Robert Sorby Torx key for Ultima Hollowing System



ITEM NO.	DETAILS	PRICE
RSB-SOV-ULTTK		\$7.00

### Robert Sorby Sovereign Ultima Cutter Sharpening Jig

The Robert Sorby sovereign ultima cutter sharpening jig provides a way of holding the small round cutters so they can be sharpened either with a diamond file, honing stone or on a grinder.



ITEM NO.	DETAILS	PRICE
RSB-SOV-ULTCSJ	Jig	\$42.00
RSB-SOV-ULTCUT	Replacement Cutter	\$31.00

### Robert Sorby Excelsior Sovereign Ultima Cutter

The Robert Sorby ultima cutters delivers great performance when hollowing, on both wet and dry timbers. This cutter has Titanium Nitride coating, giving it the sharpness of HSS, and the hardness of carbide. A diamond file or honing stone is used to hone the profile of the cutter around its perimeter.



ITEM NO.	DETAILS	PRICE
RSB-SOV-ULT-CUTG		\$36.00

### Robert Sorby Finishing Cutter Head

Robert Sorby Finishing cutter head, includes cutter



ITEM NO.	DETAILS	PRICE
RSB-SOV-ULTFCHS	Small	\$56.00
RSB-SOV-ULTFCHM	Medium	\$56.00

### Robert Sorby Ultima Hollowing System Head

Robert Sorby heads (without cutter) for Ultima Hollowing System



ITEM NO.	DETAILS	PRICE
RSB-SOV-ULTSHEAD	Small	\$131.00
RSB-SOV-ULTMHEAD	Medium	\$131.00

### Robert Sorby Ultima Hollowing System Link

Robert Sorby replacement link for Ultima Hollowing System



ITEM NO.	DETAILS	PRICE
RSB-SOV-ULTLS	Small	\$31.00
RSB-SOV-ULTLM	Medium	\$31.00

### Robert Sorby Stud for Side Handle

Used with the Deep Hollowing System and paired with the Side Handle and Collar for added support. The collar slides over the shaft of the Slicer or Hooker, with the stud and handle then being attached.



ITEM NO.	DETAILS	PRICE
RSB-RS203S		\$16.00

### Robert Sorby Arm Brace and Hooker

The arm brace and hooker combination is a safe way of hollowing vessels out through their narrow opening. The arm brace gives that extra safety and control not offered by other tools, with the neoprene grip, arm rest and shape. The design and shape of the hooker tool also adds to the ability of being able to get around the corners inside the vessel to remove as much waste as possible.



ITEM NO.	DETAILS	PRICE
RSB-RS208		\$201.00



## Robert Sorby Universal Micro Turning System



This set of 12 modular micro tools encompasses a range of the most popular micro woodturning blades. Great for a range of projects including spindle turning, hollowing and beading. Includes:  
888 Aluminium Handle 888  
Roughing Gouge 888/1 Micro 1/2" (13mm)  
Parting Tool 888/3 Micro 1/16" (2mm)

Gouge 888/4 Micro 1/2" (13mm)  
Beading and Parting Tool 888/5 5/32" (4mm)  
Micro Boring Tool 888/6 3/8" (10mm)  
Micro Swan Neck Hollowing Tool 888/7 1/4" (6mm)  
Micro Skew 888/8 1/4" (6mm)  
Micro Round Nose Scraper 888/9 1/4" (6mm)  
Micro Curved Undercut Scraper 888/10 5/16" (8mm)  
Micro French Curve Scraper 888/11 1/4" (6mm)  
Micro Diamond Undercut Scraper 888/12 5/16" (8mm)  
867 Spindle Gouge 1/4" (6mm)

ITEM NO.	DETAILS	PRICE
RSB-A888HS12T	12 Piece System	\$245.00

## Robert Sorby Long Aluminium Micro Handle



Made from aluminium, these handles are light weight, scaled down versions of popular full sized models, they give the turner good feeling and control when turning smaller projects.

ITEM NO.	DETAILS	PRICE
RSB-B889		\$38.00

## Robert Sorby Aluminium Handles for Micro Tools



This Robert Sorby aluminium handle for micro tools has been modelled after the sovereign system and its success. For small to miniature work, a smaller chisel can be ideal, this handle with a selection of chosen cutters by the woodturner is ideal. A wide selection of cutters is available for this handle in the same way the sovereign system does.

ITEM NO.	DETAILS	PRICE
RSB-B888		\$35.00

## Robert Sorby Micro Pen Set



The Robert Sorby Pen Set, is a modular micro set providing good control using all of the chisel inserts, even when roughing down stock. Included:  
13mm Handle  
13mm Roughing Gouge  
2mm Parting Tool

ITEM NO.	DETAILS	PRICE
RSB-A86HS3T		\$99.00

## Robert Sorby Texturing Tool



The Texturing Tool enables the turner to alter the visual and tactile qualities of a work piece by creating striations, whirls, an orange peel effect and more.

ITEM NO.	DETAILS	PRICE
RSB-B310		\$128.00

## Robert Sorby HHS Texturing Cutter



Spirals and textures have always been something that has not been easy or quick to do. This texturing cutter is a multi-toothed cutter that allows this to be achieved. It is one of five cutters for the large texturing and spiralling tools. A diamond file or honing stone is used to maintain this cutter, honing both bevelled faces. Regular honing is the best way to get a long life out of these

types of replaceable cutters. Sharpening can be done with the cutter mounted on the tool.

ITEM NO.	DETAILS	PRICE
RSB-B350-00		\$61.00

## Robert Sorby Spiraling System



Barley twists, spirals and flutes have always represented a problem for the woodturner. The System not only overcomes many of these difficulties, but also allows the turner's imagination to run wild as they enter a new field of decoration.

Based on the same principle as the texturing tool, it is simple to use even in the hands of a novice.

ITEM NO.	DETAILS	PRICE
RSB-B330	Includes 4 Cutters	\$249.00
RSB-B320	Includes 4mm Pitch Cutter Only	\$177.00

## Robert Sorby Toolrest for Spiraling Tool



Used to hold the texturing and spiraling tools steady and at a constant angle during use, and features indexing markings for repeatability.

ITEM NO.	DETAILS	PRICE
RSB-B360		\$50.00

## Robert Sorby Spiraling Cutter



Spirals and textures have always been something that has not been easy or quick to do. The texturing cutter is a multi-toothed cutter that allows this to be achieved. It is one of five cutters for the large texturing and spiralling tools.

ITEM NO.	DETAILS	PRICE
RSB-B350-02	2mm	\$61.00
RSB-B350-04	4mm	\$61.00
RSB-B350-05	5mm	\$61.00
RSB-B350-06	6mm	\$61.00

## INDIVIDUAL WOODTURNING CHISELS



### Robert Sorby Micro Spiralling Tool

With surface decoration and small intricate work being ever more popular this new Spiralling tool covers all options. Like the existing Robert Sorby Spiralling System, this tool incorporates a tool rest guide to ensure the correct angle is maintained when producing fine delicate spirals. The system comprises of an aluminium handle, micro spiralling head (shaft and

tool rest guide), two micro spiral cutters (fine and medium), two Allen keys and an instruction leaflet. The spiralling head is also available unhandled separately. In addition, there is a texturing cutter for those wishing to decorate miniature projects.

ITEM NO.	DETAILS	PRICE
RSB-B370-A	Handled	\$112.00
RSB-B370-O	Unhandled	\$84.00



### Robert Sorby Micro Spiralling Tool Texturing Cutter

Spirals and textures have always been something that has not been easy or quick to do. The Robert Sorby 6mm Spiralling Cutter allows a variety of spiral patterns and textures with a rib size of 5mm. It is one of five cutters for the large texturing and spiralling tools. A diamond file or honing stone is used to maintain this cutter, honing

both bevelled faces. Regular honing is the best way to get a long life out of these types of replaceable cutters. Sharpening can be done with the cutter mounted on the tool. Designed to be used with the Robert Sorby Micro Spiralling Tool RSB-370A.

ITEM NO.	DETAILS	PRICE
RSB-B370-03	6mm	\$21.00



### Robert Sorby Beading Tool

The Robert Sorby easybeader is a very fast and efficient way of doing beads.

ITEM NO.	DETAILS	PRICE
RSB-B814061	1/4"	\$51.00
RSB-B814101	3/8"	\$55.00
RSB-B814131	1/2"	\$59.00



### Robert Sorby Bead Forming

Beads are an easy profile to achieve using standard tools, however they are also easy to mess up by giving them a flat edge rather than having them rounded. This bead forming tool allows easy and quick beads to be done without effort or fuss.

ITEM NO.	DETAILS	PRICE
RSB-B835031	1/8"	\$40.00
RSB-B835061	1/4"	\$48.00
RSB-B835101	3/8"	\$48.00
RSB-B835132	1/2"	\$56.00



### Robert Sorby Captive Ring Tool

Captive rings are something that creates interest. They no longer need several tools to create these rings, whether they be bangles, curtain rings or goblets.

The Robert Sorby Captive Ring Tools cutters locate positively to ensure safety while in use. The flat shank

of the chisel rests firmly on the tools rest giving full control through the cut. This 1/4" captive ring tool giving small delicate rings. Cutters should be maintained using a diamond stone from our DMT range, and honed regularly to extend their usable life. Additional cutters of varying sizes are also available.

ITEM NO.	DETAILS	PRICE
RSB-B805062	1/4"	\$53.00
RSB-B805102	3/8"	\$53.00
RSB-B805132	1/2"	\$53.00



### Robert Sorby Pair of Thread Cutters

The Robert Sorby 16tpi thread cutters come as a pair. One is for the internal thread, and the other for the matching external thread. Combined, these make a perfectly matching lid to screw onto a bowl, round box or vessel. A threaded lid and base like this will add another dimension to your woodturning, and create interest and inspiration in others.

ITEM NO.	DETAILS	PRICE
RSB-B890160	Unhandled	\$70.00



### Robert Sorby Relief Cutting Tool

The Robert Sorby relief cutting tool has been designed to be used with the thread cutter tool support to cut a relief at the inside top of an internal thread, so the thread does not go all the way into the socket, allowing the external thread some travel, and movement.

ITEM NO.	DETAILS	PRICE
RSB-B895001		\$40.00



### Robert Sorby Thread Cutting Set

Cutting a thread into the base and lid of a turned vase fascinates everyone. This set provides the tools and instructions needed to be able to turn inspiration into reality. They have been designed and made with a unique, enhanced helix angle specially designed for use in timbers. It is recommended that beginners start with a finer tooth pitch set.

This is a HSS set with 10 threads per inch (TPI). This set consists of a pair of thread (one for external threads and the other for internal threads), a thread and sizing gauge (this is going to make the job a heap easier) and the Focus on Specialist Woodturning Tools Part 3 DVD.

ITEM NO.	DETAILS	PRICE
RSB-A89HS10A	10tpi	\$194.00
RSB-A89HS16A	16tpi	\$194.00
RSB-A89HS20A	20tpi	\$194.00



## Robert Sorby Thread Cutter Tool Support

This Robert Sorby Tool Support has been designed as a support for the thread cutters, both internal and external as well as the relief cutting tool.

ITEM NO.	DETAILS	PRICE
RSB-B893003		\$49.00



## Robert Sorby Shear Scraper

Shear scraping is a method of wood-turning where the angle of the scraper peels away the wood fibres. This technique offers some significant advantages over conventional scrapers, with sanding often unnecessary. At the optimum angle of 45°, the slicing action is safer and produces a superior

finish, with the added benefit of a very low risk of the cutter digging in. The 3/8" square shank sits firmly on the tool rest and presents the cutter precisely at 45°, to the workpiece when used in either direction. This is due to the unique cutter seating position. Cutters also available in our Excelsior high performance range (Titanium Nitride coating), offering a sharper edge for longer.

ITEM NO.	DETAILS	PRICE
RSB-B826003	Internal	\$65.00
RSB-B827003	External	\$65.00



## Robert Sorby Internal Shear Scraper

This Robert Sorby HSS internal shear scraper cutter is set to an angle of 45°, to get a good shear cut. This type of cut is less aggressive and leaves a finish that requires little to no sanding. It is an excellent choice for internal work such as goblets, bowls and other internal projects. Sharpening is done on a diamond file or honing stone, honing the top face of

the cutter. Regular honing will maintain the cutters edge, and extend its useable life.

ITEM NO.	DETAILS	PRICE
RSB-B826C		\$19.00



## Robert Sorby External Shear Scraper

This Robert Sorby HSS external shear scraper cutter is set to an angle of 45°, to get a good shear cut. This type of cut is less aggressive and leaves a finish that requires little to no sanding. It is an excellent choice for external work.

Sharpening is done on a diamond file or honing stone, honing around the profile of the cutter. Regular honing will

maintain the cutters edge, and extend its useable life. This can be done with the cutter fitted to the tool.

ITEM NO.	DETAILS	PRICE
RSB-B827C		\$19.00



## Robert Sorby TurnMaster

Featuring a patented interchangeable cutter head for a large variety of optional cutters. The Turnmaster from Robert Sorby is an excellent tool for the seasoned woodturner or novice who doesn't have access to sharpening facilities. The Turnmaster is the first in the world to combine three cutting edge technologies in one flexible tool. All cutters are interchangeable with one tool, Indexable, patented cutting head for shear scraping, Interchange-

able cutter head & replaceable cutters mean no need to buy multiple tool, Flat underside for stability, High tensile torx screw/ key for quick cutter release. This set contains a round, square and diamond shaped detail cutters. The underneath side of the shaft is flat, giving a positive feel with the chisel. The head has three pre-set angles, making this flat underneath side critical as a reference.

ITEM NO.	DETAILS	INC. 3 CUTTERS	PRICE
RSB-RSTM-HT123	Handled	HSS	\$166.00
RSB-RSTM-HCT123	Handled	Carbide	\$186.00
RSB-RSTM-ST123	Unhandled	HSS	\$152.00
RSB-RSTM-SCT123	Unhandled	Carbide	\$172.00



## Robert Sorby Turnmaster with Choice of Carbide Cutter

This Set includes a complete tool holder and 1 Tungsten Carbide Cutter.

ITEM NO.	CUTTER	DETAILS	PRICE
RSB-RSTM-HCT1	Round	Handled	\$148.00
RSB-RSTM-SCT1	Round	Unhandled	\$134.00
RSB-RSTM-HCT2	Detail	Handled	\$148.00
RSB-RSTM-HCT3	Square	Handled	\$148.00



## Robert Sorby TurnMaster Shank and Head

Robert Sorby revolutionised wood-turning when they introduced the Turnmaster, this is the ideal accessory for the user who may have purchased a Turnmaster with multiple cutters, and want them mounted to a head rather than changing the cutters when required. Does not include cutter.

ITEM NO.	DETAILS	PRICE
RSB-RSTM-SH		\$109.00

## Robert Sorby Turnmaster Additional Head

As efficient as the Robert Sorby Turnmaster is, you can now save even more time by purchasing additional interchangeable heads. Eliminating need to go through the process of removing cutters each time you wish to change your cutting action. Now you can pre install cutters on multiple heads which will enable you to change in a fraction of the time. The perfect solution for the

production focused or time constrained woodturner! - Designed for use with the Robert Sorby Turnmaster RSB-HTC123



ITEM NO.	DETAILS	PRICE
RSB-RSTM-HEAD		\$36.00



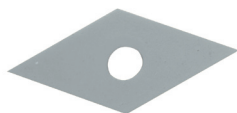
## INDIVIDUAL WOODTURNING CHISELS



### Robert Sorby Round Cutter

Round Cutter to suit the Robert Sorby Turnmaster. A general purpose cutter used for rapid removal of material inside and outside of bowls and hollow forms.

ITEM NO.	DETAILS	PRICE
RSB-RSTM-TIP1	HSS	\$18.00
RSB-RSTM-CT1	Carbide	\$24.00
RSB-RSTM-GT1	TiN	\$22.00



### Robert Sorby Detail Point Cutter

Detail Point Cutter to suit the Robert Sorby Turnmaster. This cutter is the first choice when roughing square to round both quickly and safely when turning between centres. Useful for creating fine detail on spindles and bowl work.

ITEM NO.	DETAILS	PRICE
RSB-RSTM-TIP2	HSS	\$18.00
RSB-RSTM-CT2	Carbide	\$24.00
RSB-RSTM-GT2	TiN	\$22.00



### Robert Sorby Square Cutter

Square Cutter to suit the Robert Sorby Turnmaster. Used for generation square shoulders on tenons where a turned part is to be assembled as in a hole, ex. chair leg. Useful on the outside of a round form as well as long, straight section of spindle work.

ITEM NO.	DETAILS	PRICE
RSB-RSTM-TIP3	HSS	\$18.00
RSB-RSTM-CT3	Carbide	\$24.00
RSB-RSTM-GT3	TiN	\$22.00



### Robert Sorby French Curve Inside Cutter

French Curve Cutter to suit the Robert Sorby Turnmaster. This cutter is ideal for scraping or shear scraping inside forms. Ideally suited for finishing cut on egg cups, goblets, and round-bottom boxes.

ITEM NO.	DETAILS	PRICE
RSB-RSTM-TIP4	HSS	\$18.00
RSB-RSTM-GT4	TiN	\$22.00



### Robert Sorby Box Dovetail Cutter

Box Dovetail Cutter to suit the Robert Sorby Turnmaster. Designed to create parallel sides and 90 degree corners in boxes. It also creates dovetails and tenons. Provides a superior finish and cut quality.

ITEM NO.	DETAILS	PRICE
RSB-RSTM-TIP5	HSS	\$18.00
RSB-RSTM-GT5	TiN	\$22.00



### Robert Sorby Teardrop Inside/Outside Cutter

Teardrop Cutter to suit the Robert Sorby Turnmaster. Use the straight side scraping and shear scraping outside forms. The curved edge is excellent for scraping inside forms.

ITEM NO.	DETAILS	PRICE
RSB-RSTM-TIP6	HSS	\$18.00
RSB-RSTM-GT6	TiN	\$22.00



### Robert Sorby Mushroom Cutter

Mushroom Cutter to suit the Robert Sorby Turnmaster. As the name suggests, ideal for undercutting mushroom shapes. Also useful for hollowing out small forms.

ITEM NO.	DETAILS	PRICE
RSB-RSTM-TIP7	HSS	\$18.00
RSB-RSTM-GT7	TiN	\$22.00



### Robert Sorby Turnmaster Cutter Set

3 Piece Set to suit the Robert Sorby Turnmaster. Kit Includes one each of the Square, Round and Detail Point Cutter.

ITEM NO.	DETAILS	PRICE
RSB-RSTM-TIP123	HSS	\$47.00
RSB-RSTM-CT123	Carbide	\$66.00
RSB-RSTM-GT123	TiN	\$59.00



### Robert Sorby Turnmaster Tip Holder

The Robert Sorby Turnmaster Tip Holder provides a stable and secure platform enabling you to sharpen Turnmaster Cutting Tips. It can be used on the Robert Sorby Proedge or Tormek System with the optional SVD-110 Tool Rest.

ITEM NO.	DETAILS	PRICE
RSB-RSTM-TH		\$13.00



## Robert Sorby Sandmaster

An extremely handy addition to any turner's armoury, the Sandmaster is used in conjunction with a lathe to put a fine finish on turned pieces. As the disc is spinning it also reduces the clogging of the abrasive. The Sandmaster comes complete with a Hook & Loop covered 2" sponge pad which allows for the easy changing of abrasive discs. A variety of aluminium oxide discs, from 60 - 400 can then be quickly attached. The adjustable head

which runs on a durable phosphor bronze bushing lets the turner reach even the more inaccessible spots. As an optional extra, a 3" head and discs can be easily fitted for greater efficiency.

ITEM NO.	DETAILS	PRICE
RSB-W410		\$81.00



## Robert Sorby Micro Sandmaster Tool

The Robert Sorby Micro Sandmaster Set provides a safe method of sanding turned objects and vessels. Attach the Hook & Loop sandpaper, angle the head to the desired angle and let the tool do the work.

ITEM NO.	DETAILS	PRICE
RSB-B888SM		\$86.00



## Robert Sorby Hook & Loop Sponge Pad

Sponge pads are soft and allow difficult to reach and tight spaces to be sanded. As they are soft, they will also mold to the shape of the project, giving a consistent uniform sand.

ITEM NO.	DETAILS	DETAILS	PRICE
RSB-W411	25mm	Untapered	\$26.00
RSB-W412	50mm	Untapered	\$24.00
RSB-W412T	50mm	Tapered	\$29.00
RSB-W413	75mm	Untapered	\$30.00



## Robert Sorby Abrasive Discs

These Robert Sorby abrasive discs get attached to the sponge pad using the standard Hook & Loops, so changing between coarse to fine papers is quick and easy. Pack of 10.

ITEM NO.	DETAILS	DETAILS	PRICE
RSB-W411A120	25mm	120 grit	\$5.00
RSB-W411A180	25mm	180 grit	\$5.00
RSB-W411A240	25mm	240 grit	\$5.00
RSB-W411A400	25mm	400 grit	\$5.00
RSB-W412A60	50mm	60 grit	\$11.00
RSB-W412A120	50mm	120 grit	\$9.00
RSB-W412A180	50mm	180 grit	\$9.00
RSB-W412A240	50mm	240 grit	\$9.00
RSB-W412A400	50mm	400 grit	\$9.00
RSB-W413A60	75mm	60 grit	\$16.00
RSB-W413A120	75mm	120 grit	\$14.00
RSB-W413A180	75mm	180 grit	\$14.00
RSB-W413A240	75mm	240 grit	\$14.00
RSB-W413A400	75mm	400 grit	\$14.00



## Robert Sorby Mop

The Robert Sorby mops are made of a fine quality cotton. Natural materials such as cotton work best to apply finishes such as oils, lacquers, waxes and shellacs to a lustrous sheen. Mops are attached to the Sandmaster using the pigtail mandrel.

ITEM NO.	DETAILS	DETAILS	PRICE
RSB-W492	50mm	Goblet Mop	\$42.00
RSB-W493	3"	Bowl Mop	\$50.00
RSB-W494	4"	Bowl Mop	\$78.00



## Robert Sorby SandMaster Pigtail Mandrel

The Robert Sorby Pigtail Mandrel is tapered to screw the polishing mop onto to apply a finish. It can be mounted to the drill or headstock mounted chuck. The threaded taper winds into the back of the mop and then rotates as it applies the finish, giving a nice deep finish.

ITEM NO.	DETAILS	PRICE
RSB-W491		\$25.00



## Robert Sorby Honing Paste

The Robert Sorby Honing Paste is designed for the Polishing Mop, it adds an abrasive grit which cuts quickly to leave a mirrored finish giving the desired edge. This method of sharpening can be used for many types of blades of cutters, but is especially good for carving chisels that are difficult to sharpen.

ITEM NO.	DETAILS	PRICE
RSB-W475		\$16.00



## Carbatec Short-Sleeve Woodturning Jacket

These Woodturning Jackets feature a covered zip and Hook & Loop sealed collar. Please note: colours may vary from green, blue or maroon.

ITEM NO.	DETAILS	PRICE
JACKET-S	Small	\$60.00
JACKET-L	Large	\$60.00
JACKET-XL	X-Large	\$60.00
JACKET-XXXL	XXX-Large	\$60.00



## Carbatec Long-Sleeve Woodturning Jacket

These Woodturning Jackets feature a covered zip and Hook & Loop sealed collar. Please note: colours may vary from green, blue or maroon.

ITEM NO.	DETAILS	PRICE
JACKETL-XL	X-Large	\$60.00
JACKETL-XXL	XX-Large	\$60.00