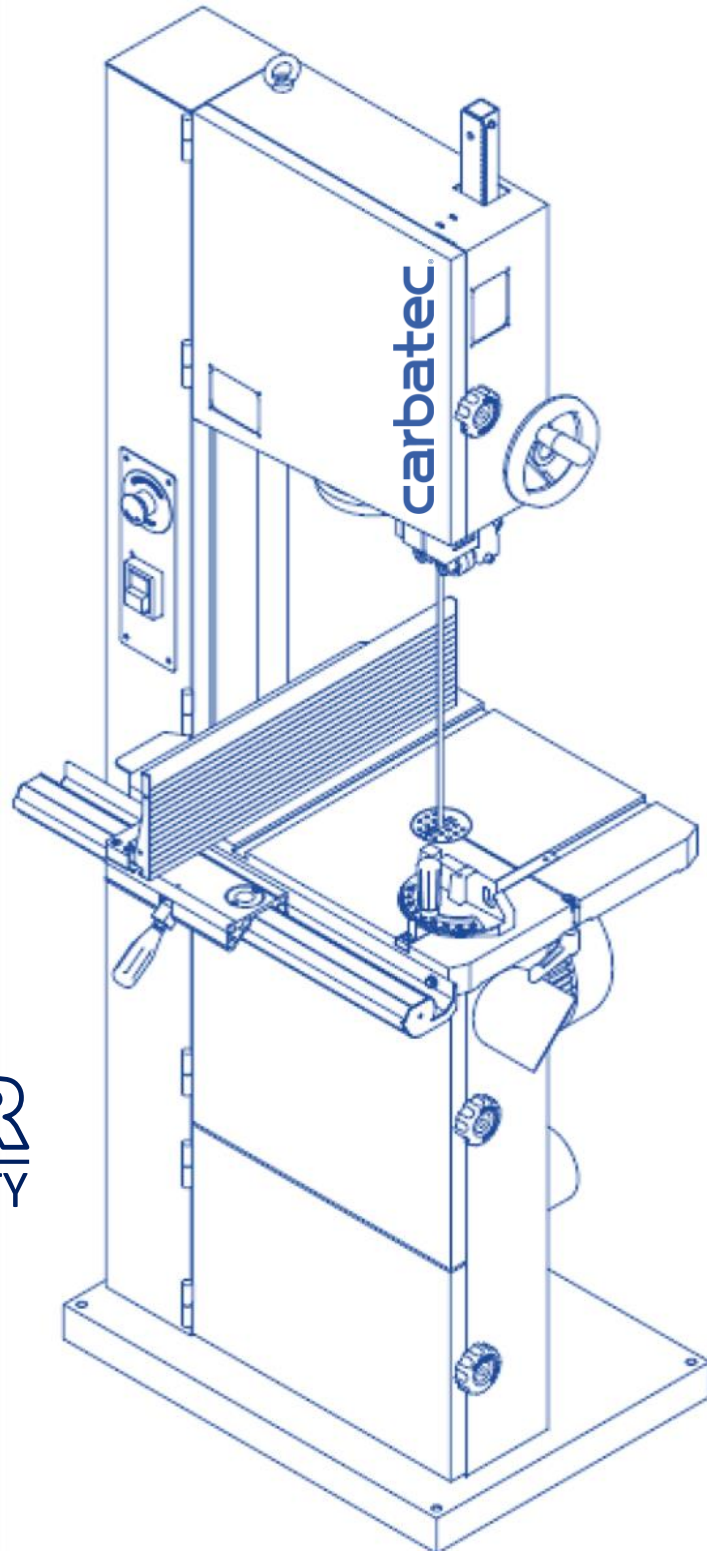


carbatec



3YR
WARRANTY

OWNERS MANUAL

PROFESSIONAL 1500W - 345MM BANDSAW

BS-X3452C

TABLE OF CONTENT

1. SPECIFICATIONS	1
2. WARNINGS	2
3. SAFETY INSTRUCTION FOR MACHINERY	3
4. IDENTIFICATION	4
FRONT SIDE OF BAND SAW	4
REAR OF BAND SAW	5
5. OPERATING INSTRUCTION	6
LIFTING AND PLACING	6
ASSEMBLING	6
ADJUSTING 90 DEGREE TABLE STOP	6
ASSEMBLING RIP FENCE	7
CHANGING BLADES	7
ADJUSTING THE TENSION OF BLADE	7
ADJUSTING UPPER BLADE GUIDE ASSEMBLY	8
DUST COLLECTION	8
SETTING THE CUTTING HEIGHT	8
TABLE PARALLEL ADJUSTMENT	9
MITER GAUGE ADJUSTMENT	10
SAFETY DEVICE	10
6. PARTS LIST	11
7. WIRING DIAGRAM	27

FEATURES:

The 14”(355mm) bandsaw is a well designed industrial machine that provide variety of wood work functions to meet your higher need of a bandsaw. Followings are the basic functions you will find in this machine:

1. *Quick Changed Saw Blade System* gives you an easy way to replace saw blade to cut different quality wood materials.
2. *Adjustable Rip Fence* can assist you to cut desired shapes.
3. *Accurate Miter Gauge* can let you create any curves you desire.
4. *Effective Ball Bearing Guide System* will let the band saw blade run smoother.
5. *Humanized Dust Chutes* collect extra wood-chips and give you a better working environment.
6. *Extended 14” Height Space* provides you a bigger working space to cut wider and higher wood selections.

1. SPECIFICATIONS

Horse Power	2HP
Power Requirement	230V, 1PH, 50HZ
Switch	CE and Emergency Stop Switch
Cutting Height	14"(355mm)
Max. Cutting Width	13-1/2"(340mm)
Max. Cutting (with Rip Fence)	12"(300mm)
Saw Blade (L)	121.2"/3078mm
Saw Blade (W)	1/8" to 3/4" (Standard 3/8")
Saw Blade Speed	655 M/min.
Table Size	21-3/4" x 16-1/8"(550x410mm)
Table Tilting	Left-5° / Right-45°
Wheel Size	14"(355mm)
Table Height From Ground	37"(940mm)
Dust Chute Diameter	φ 4" x 2
Braking System	Electronic Brake
N.W./G.W.	147 / 176 KGS
Appearance	730 x 825 x 1920 mm
Packing Size (L x W x H)	760 x 625 x 2005mm

2. WARNINGS



WARNING

- Misuse of this machine can cause serious injury.
- For safety, machine must be set up, used and serviced properly.
- Read, understand and follow instructions in the operator and parts manual which was shipped with your machine.

When setting up machine:

- Always avoid using machine in damp or poorly lighted work areas.
- Always be sure machine is securely anchored to the floor.
- Always keep machine guards in place.
- Always put start switch in "OFF" position before plugging in machine.

When using machine:

- Never operate with machine guards missing.
- Always wear safety glasses with side shields.
- Never wear loose clothing or jewelry.
- Never overreach - you may slip and fall into the machine.

- Never leave machine running while you are away from it.
- Always shut off the machine when not in use.

When servicing machine:

- Always unplug machine from electrical power while servicing.
- Always follow instructions in operators and parts manual when changing accessory tools or parts.

You - the stationary power tool user - hold the key to safety.

Read and follow these simple rules for best results and full benefits from your machine. Use properly, this machine is among the best in design and safety. However, any machine used improperly can be rendered inefficient and unsafe. It is absolutely mandatory that those who use our products be properly trained in how to use them correctly. Should read and understand the Operators and Parts Manual as well as all labels affixed to the machine. Failure in following of these warnings can cause serious injuries

MAHINERY GENERAL SAFETY WARNINGS

1. Always wear protective eye wear when operating machinery. Eye wear shall be impact resistant, protective safety glasses with side shields. Not using eye wear which could result in severe injury from breakage of eye protection.
2. Wear proper apparel. No loose clothing or jewelry which can get caught in moving parts. Rubber soled footwear is recommended for best footing.
3. Do not overreach. Failure to maintain proper working position can cause you to fall into the machine or cause your clothing to get caught - pulling you into the machine.
4. Keep guards in place and in proper working order. Do not operate the machine with guards removed.
5. Avoid dangerous working environments. Do not use stationary machine tools in wet or damp locations. Keep work areas clean and well lit. Special electrics should be used when working on flammable materials.
6. Avoid accidental starts by being sure the start switch is "OFF" before plugging in the machine.
7. Never leave the machine running while unattended. Machine shall be shut off whenever it is not in operation.
8. Disconnect electrical power before servicing. Whenever changing accessories or general maintenance is done on the machine, electrical power to the machine must be disconnected before work is done.
9. Maintain all machine tools with care. Follow all maintenance instructions for lubricating and the changing of accessories. No attempt shall be made to modify or have makeshift repairs done to the machine. This not only voids the warranty but also renders the machine unsafe.
10. Machinery must be anchored to the floor.
11. Secure work. Use clamps or a vise to hold work, when practical. It is safer than using your hands and it frees both hands to operate the machine.
12. Never brush away chips while the machine is in operation.
13. Keep work area clean. Cluttered area invite accidents.
14. Remove adjusting keys and wrenches before turning machine on.
15. Use the right tool. Don't force a tool or attachment to do a job it was not designed for.
16. Use only recommended accessories and follow manufacturer's instructions pertaining to them.
17. Keep hands in sight and clear of all moving parts and cutting surfaces.
18. All visitors should be kept at a safe distance from the work area. Make workshop completely safe by using padlocks, master switches, or by removing starter keys.
19. Know the tool you are using - its application limitations, and potential hazard.

GENERAL ELECTRICAL CAUTIONS

This saw should be grounded in accordance with the National Electrical Code and local codes and ordinances. This work should be done by a qualified electrician. The saw should be grounded to protect the user from electrical shock.

Caution: For circuits which are far away from the electrical service box, the wire size must be increased in order to deliver ample voltage to the motor. To minimize power losses and to prevent motor overheating and burnout, the use of wire sizes for branch circuits or electrical extension cords according to the following table is recommended.

3. SAFETY INSTRUCTION FOR MACHINERY

<ol style="list-style-type: none"> 1. Always wear leather gloves when handling saw blade. The operator shall not wear gloves when operating the machine. 2. All doors shall be closed, all panels replaced, and other safety guards in place prior to the machine being started or operated. 3. Be sure that the blades are not contact with the workpiece when the motor is started. The motor shall be started and you should allow the saw to come up to full speed before bringing the saw blade into contact with the workpiece. 4. Keep hands away from the blade area. See Figure A. 5. Remove any cut off piece carefully while keeping your hands free of the blade area. 6. Saw must be stopped and electrical supply must be cut off before any blade replacement or adjustment of blade support mechanism is done, or before any attempt is made to change the drive belts or before any periodic service or maintenance is performed on the saw. 7. Remove loose performed on the unnecessary workpieces from area before starting machine. 8. Bring adjustable saw guides and guards as close as possible to the workpiece. 	<ol style="list-style-type: none"> 9. Always wear protective eye wear when operating, servicing, or adjusting machinery. Eyewear shall be impact resistant, protective safety glasses with side shields. Not using eye wear which could result in severe injury from breakage of eye protection. See Figure B. 10. Non-slip footwear and safety shoes are recommended. See Figure C. 11. Wear ear protectors (plugs or muffs) during extended periods of operation. See Figure D. 12. Wear mask to operate machine. See Figure E. 13. Do not smoke during operating machine. See Figure F. 14. The workpiece, or part being sawed, must be securely clamped before the saw blade enters the workpiece. 15. Remove cut off pieces carefully, keeping hands away from saw blade. 16. Saw must be stopped and electrical supply cut off or machine unplugged before reaching into cutting area. 17. Avoid contact with coolant, especially guarding your eyes.
--	---



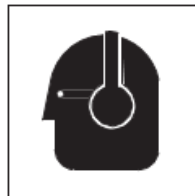
A



B



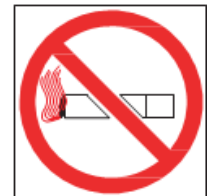
C



D



E



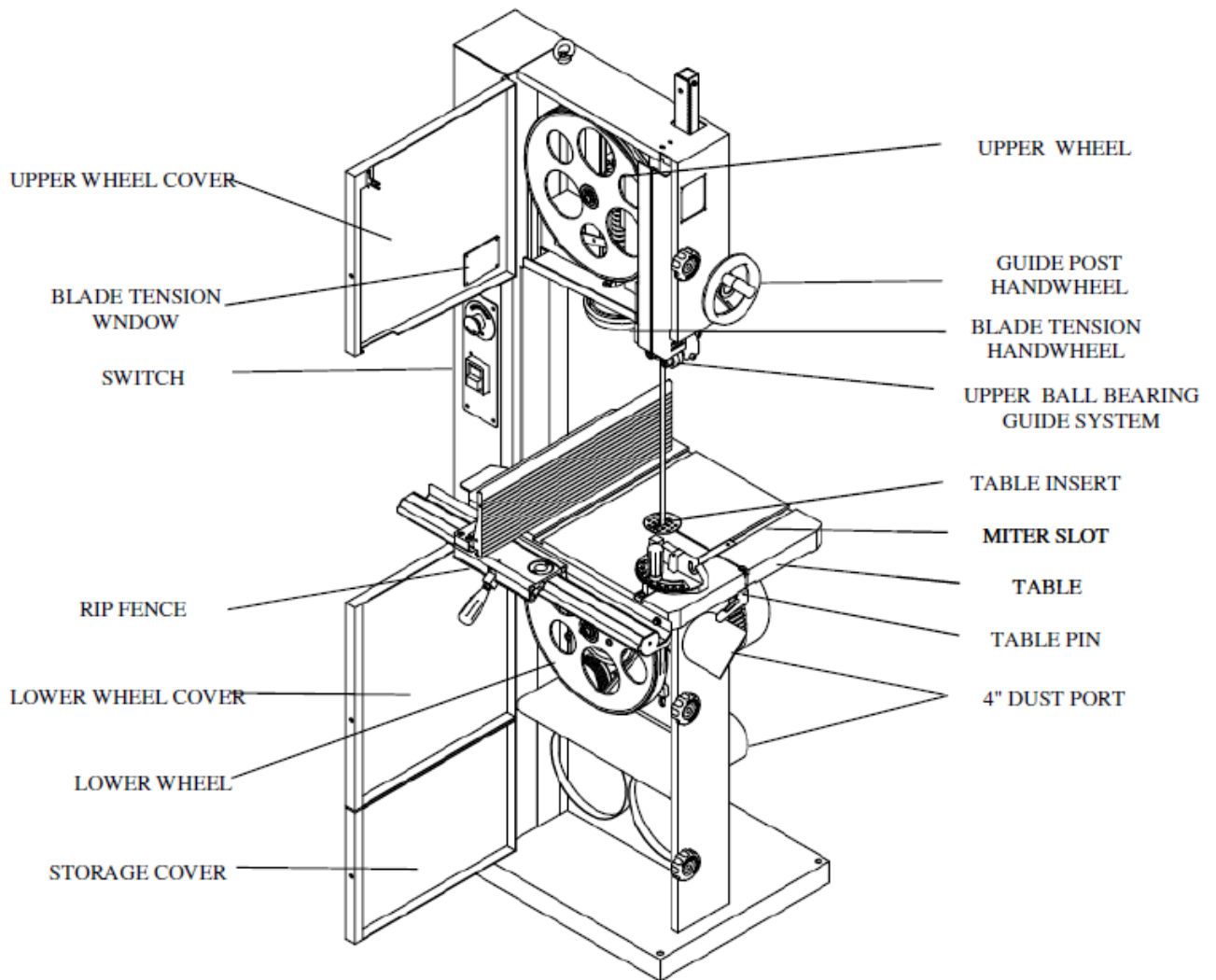
F

4. IDENTIFICATION

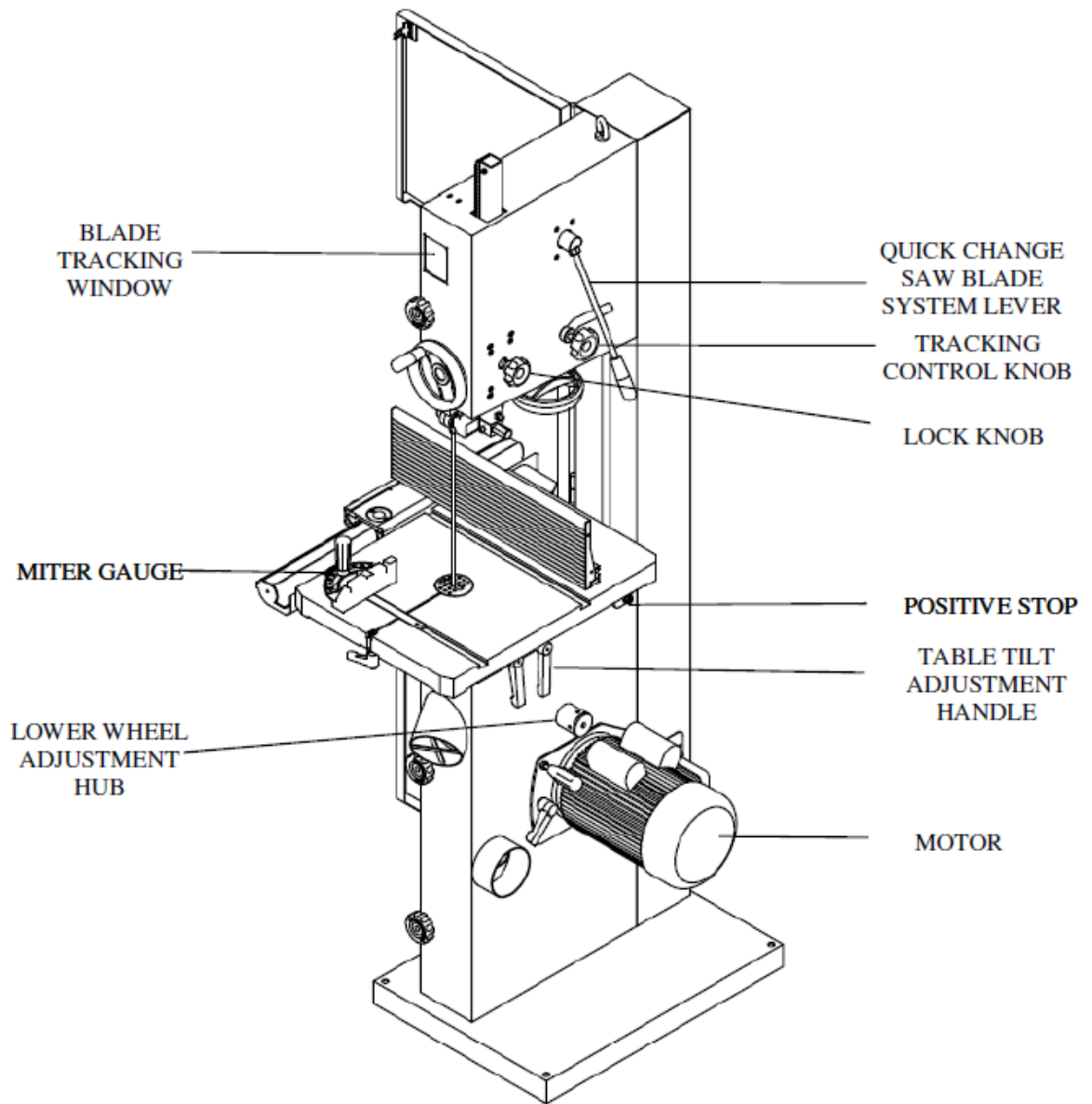
Throughout this document, we make reference to various systems and components on the saw. The two illustrations on these pages will provide you with an overall frame of reference for the location and position of the various components.

Where detailed illustrations for various subsystems will be helpful, you will find these illustrations accompanying the specific test for each subsystem and its components.

FRONT SIDE OF BAND SAW



REAR OF BAND SAW



5. OPERATING INSTRUCTION

LIFTING AND PLACING

1. Place lifting hook through eye bolt. (see Figure 1)
2. Use a 2,000KGS wrecker to hang up the machine to suitable place.
3. To ensure the safety and sufficient upright stability of the machine, you need to bolt the machine to floor on M10 screw.

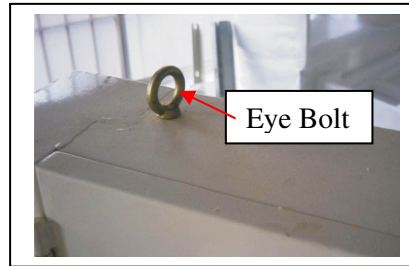


Figure 1

ASSEMBLING

1. Attach the hand wheel (see Figure 2) to the machine.
2. Slide the table slot to the saw blade and slowly move to the center of the table. Adjust the table until the saw blade is in the center of table insert.
3. Install table insert. Then, install table gap screw assembly, secure with (1) M8 nut, (2) M8 flat washer and tighten gap screw. (see Figure 3)
4. Make sure the table is in the center. Then, secure table to trunnion. Please use (1) M8 flat washer (2) M8 spring washer, and (3) M8x25 hex head bolt to secure. (see Figure 4)

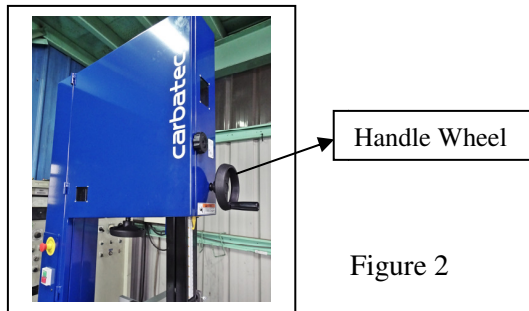


Figure 2

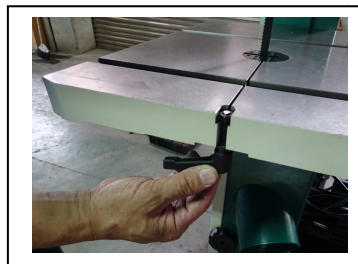


Figure 3

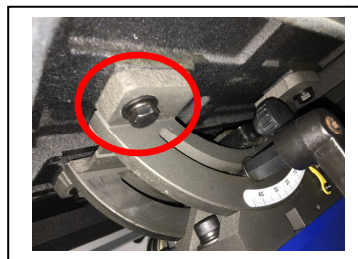


Figure 4

ADJUSTING 90 DEGREE TABLE STOP

1. Loosen the lock knobs (see Figure 4) and tilting table left until it rests against table stop bolt M8.
2. Using positive stop allows you to quickly return the table to 0 from a right-tilt setting and allows for calibration. Please tilt table to approximately 10° right-tilt. (see Figure 6) Then, rotate positive stop to up position. Finally, tilt table down until it rests on positive stop and then tighten table tilt lock lever.

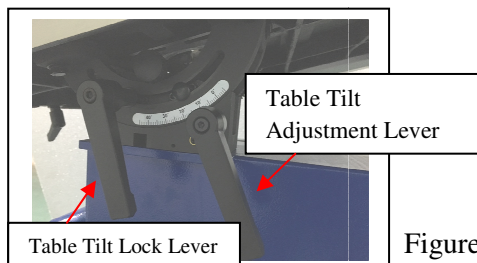


Figure 5

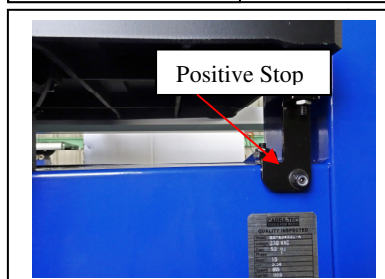


Figure 6

ASSEMBLING RIP FENCE

1. Install fence support. Use (1)M6 flat washer and (2) M6 hex socket bolt.(see Figure 7)
2. Install the fence rail to the table. Use (1) two M6 spring washers (2) two M6 hex head bolts (3) two M6 flat washers.(see Figure 8)
3. Place fence base on fence rail. Slide the fence on its guides until it is the required distance from the blade. Push lock lever down to secure fence in place.(see Figure 8)
4. Fix the fence face to the fence base.(see Figure 8)
5. Check the scale. Make sure the distance between the edge of the miter slot and both front and rear of the rip fence. Adjust to let both distances equal.

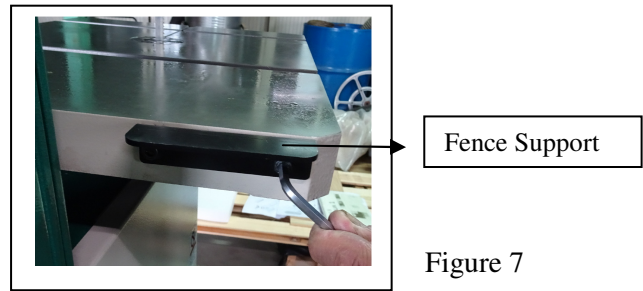


Figure 7

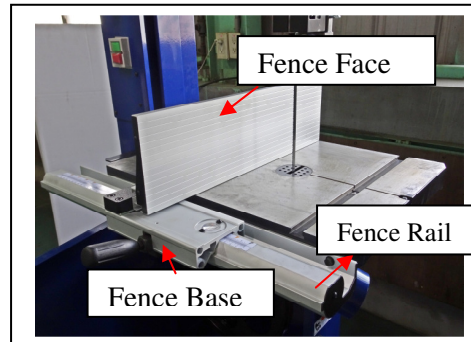


Figure 8

CHANGING BLADES

1. Unplug power cord.
2. Remove the table insert and table pin.
3. Open upper and lower wheel cover.
4. Loosen the upper and lower blade guide system and bearing.
5. Loosen quick change saw blade system lever on rear of bandsaw.(see Figure 9)
6. Remove the blade and guide new blade through table slot. Place blade in upper and lower ball bearing guides system.
7. Replace blade in the MIDDLE of the upper and lower wheel. If the blade is not in the right position, you must relax the fixed handle and adjust the tracking control knob.(see Figure 9)
8. Replace the table insert and table pin.
9. Adjust the blade tension and blade tracking if the blade width is different.



Figure 9

ADJUSTING THE TENSION OF BLADE

Blade tension is set by a spring loaded tension mechanism on the upper wheel. Check the level of the tension device before cutting. The tension for various blade widths as indicated on the window of upper wheel cover.

Turn the blade tension hand wheel (see Figure 10) and see the saw tension instruction (see Figure 11) indicated on the window of upper wheel cover.



Figure 10

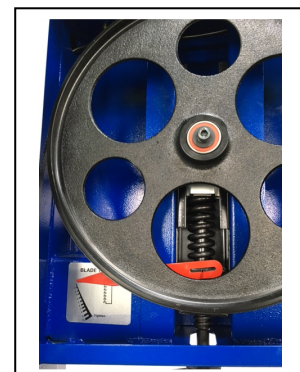
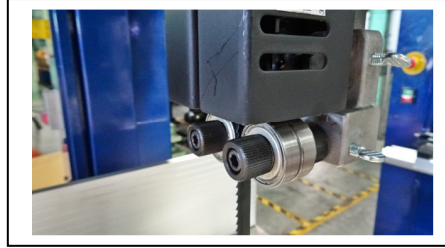


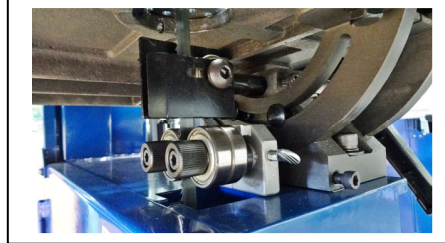
Figure 11

ADJUSTING UPPER BLADE GUIDE ASSEMBLY

1. Set the bearing of upper and lower blade guide within approx. 0.5mm of the blade. Make sure the bearing and the back of the blade approx. 0.5mm. (see Figure 12 and Figure 13)
2. Do not set the bearing too close. The friction generates heat, which may have an adverse effect on the bearings and the saw blade.



12



13

DUST COLLECTION

The band saw is recommended to be connected to dust collect. There are two 4" dust ports (see Figure 14) to attach with 4" steel clamping.



Figure 14

SETTING THE CUTTING HEIGHT

The upper blade guide should always be set as close practical against the work. To adjust, loosen the hand wheel (see Figure 15) at the side of housing and see the blade guide to the required height. Then, tighten after setting.



Figure 15

TABLE PARALLEL ADJUSTMENT

1. Insert table pin into the table groove.(Figure 16)

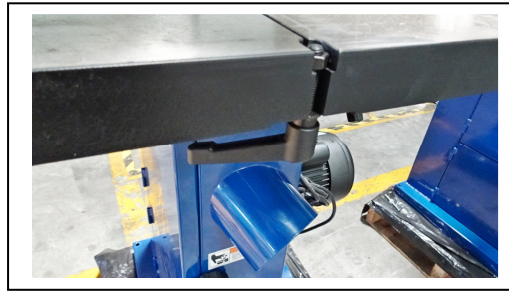


Figure 16

2. Use the ruler gauge to put it on the table. (Figure 17) Adjust the position of table pin (adjust the depth of the pin) and adjust the parallel of the table by using the feller gauge. Tolerance for the table parallel is within 0.4mm.

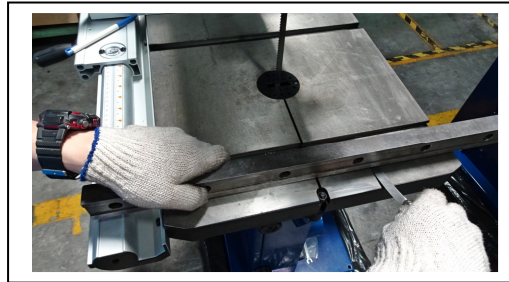


Figure 17

3. When adjusting the table, the table edge can higher than the middle position about 0.4mm which is acceptable. (Figure 18& Figure 19) Edge can not lower than the middle part of the table.

Note: Insert the table pin deeper, the middle part of the table will be lower.

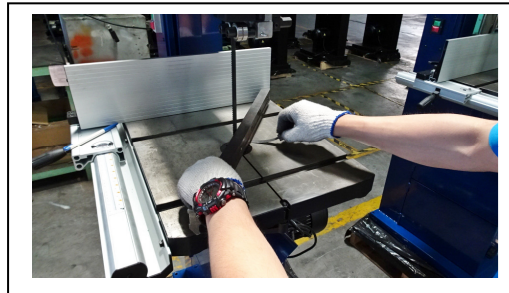


Figure 18

4. Follow above steps to finish the table parallel adjustment.



Figure 19

Trouble Shooting:

If the table pin gets stuck, it's because you push it too deep. Use a round bar $\phi 5\text{mm} \sim \phi 8\text{mm}$ and a soft hammer to knock the table pin out from inside of the table. Please be aware of your fingers!

MITER GAUGE ADJUSTMENT

1. Place the miter gauge in the table slot.
2. Loosen the clamp screw on the miter gauge.
3. Adjust the desired angle of cutting on the miter gauge.
4. Tighten the clamp screw. (see Figure 20)

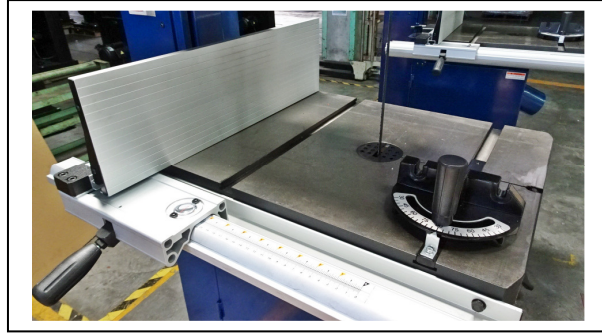


Figure 20

SAFETY DEVICE

1. Limit switch (see Figure 21) inside the machine body for cutting off the power while door opening during operation.



Figure 21

2. The emergency stop (see Figure 22) can help you stop the machine immediately once dangerous situation happens.



Figure 22

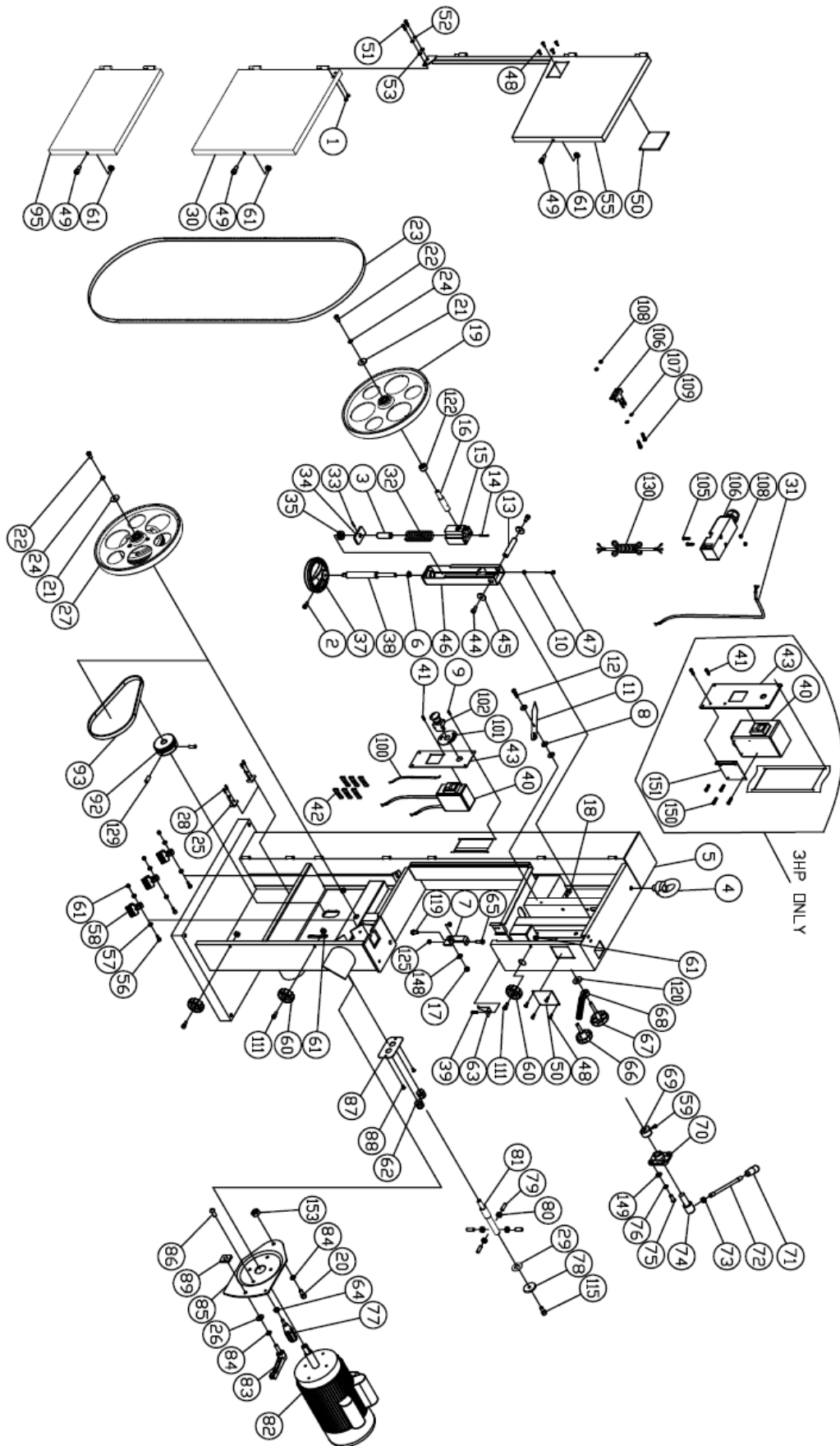
REMINDER

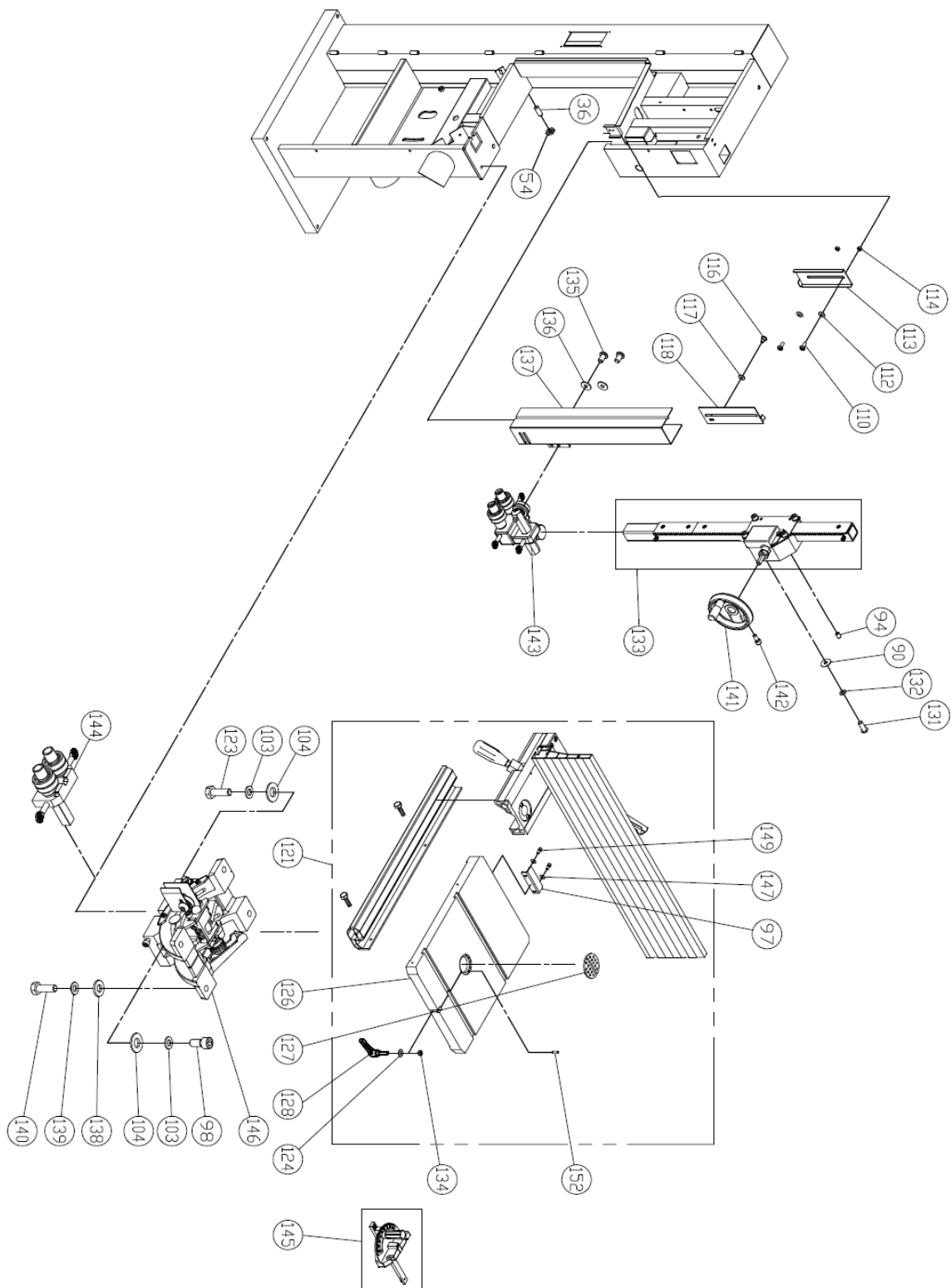
Once completing assembly, please test run the machine to ensure it is properly connected to power and safety components are functioning correctly.

If you find an unusual problem during the test run, please stop the machine immediately. Disconnect the machine from power and fix the problem before operating the machine again.

6. PARTS LIST

MODEL NO. SBW-3501H1





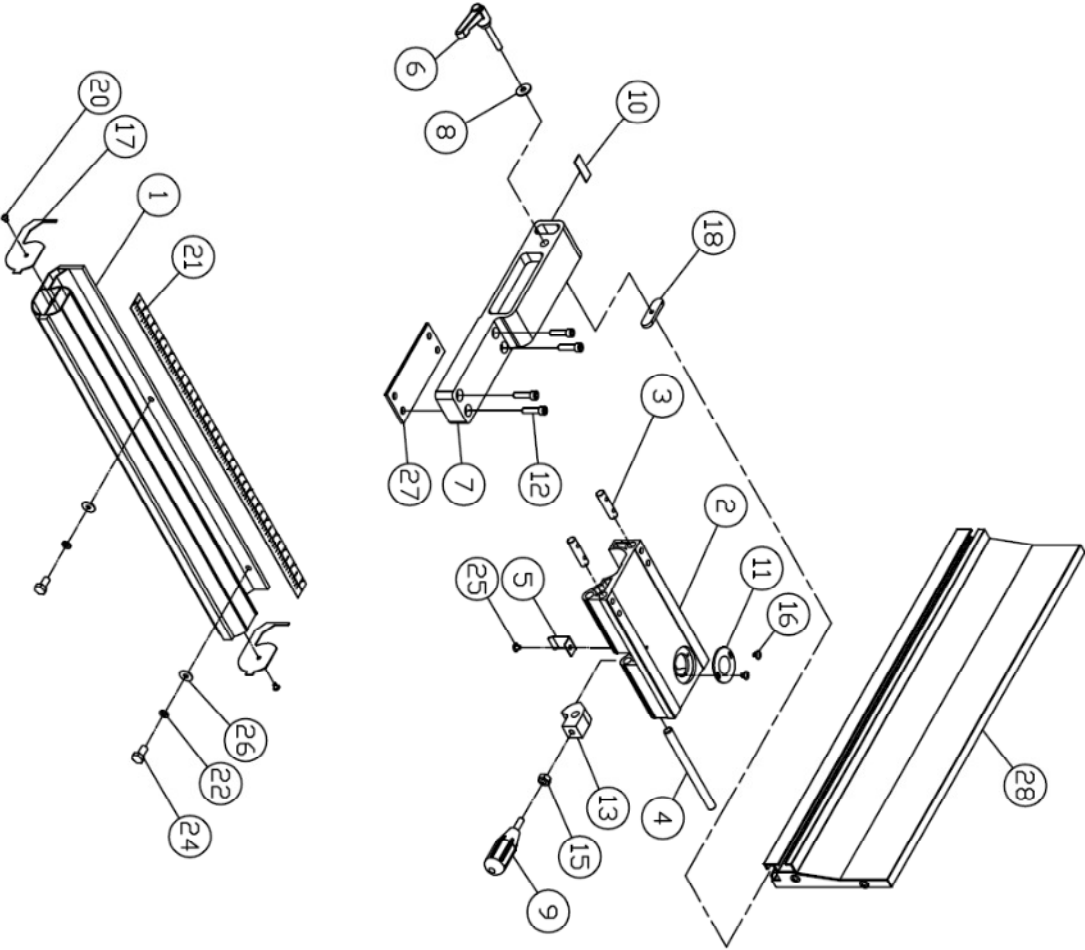
ITEM	PART NO.	PARTS NAME	SIZE	Q'TY	NOTE
1	NF050800	NUT	M5	2	
2	SR060400	HEX SOCKET BOLT	M6x20	1	
3	135067	BUSHING		1	
4	995101	RING	M10	1	
5	130470	MACHINE BODY		1	2HP
	130475	MACHINE BODY		1	3HP
6	RE150000	RETAINING RING(E)	E15	1	
7	135529	TABEL SUPPORT PLATE		1	
8	WF061310	FLAT WASHER	M6xφ13	3	
9	SF059200	PAN HEAD BOLT W/FLANGE	M5x8	4	
10	NH061000	NUT	M6	1	
11	130378	POINTER		1	
12	135073	STEP SCREW	M4x5	1	
13	135012	UPPER SHAFT		1	
14	PS053600	SPRING PIN	φ5x36	1	
15	135017	UPPER WHEEL SHAFT HINGE		1	
16	130458	UPPER WHEEL SHAFT		1	
17	NL081300	NYLON NUT	M8	1	
18	SR069300	HEX SOCKET BOLT	M6x12	1	
19	AB130466	UPPER WHEEL ASM	φ14"	1	
20	SR100700	HEX HEAD BOLT	M10x35	1	
21	WF082320	FLAT WASHER	M8xφ23	2	
22	SR089400	HEX SOCKET BOLT	M8x16	2	
23	130479	SAW BLADE	3/8"x3079mmx0.65mm	1	
24	WS080000	SPRING WASHER	M8	2	
25	170736	SAW HOOK		2	
26	WF102030	FLAT WASHER	M10xψ20	1	
27	AB130463	LOWER WHEEL ASM	φ14"	1	
28	SP049200	PAN HEAD BOLT	M4x8	4	
29	130462	PLATE		1	
30	130472	LOWER COVER		1	
31	IC130363	SWITCH CORD	0.75x2Cx1.3M	1	
32	135032	SPRING		1	
33	PS031600	PIN	φ3x16	1	
34	135042	LOCATE BLOCK		1	
35	994301	BEARING	51201	1	
36	SS080600	SET SCREW	M8x30	1	
37	135002	HANDLE WHEEL		1	
38	130476	ADJUSTING BOLT		1	
39	SF059200	PAN HEAD BOLT W/FLANGE	M5x8	1	
40	136017B	BRAKE SWITCH	12A	1	2HP
	136017C	BRAKE SWITCH	16A	1	3HP

ITEM	PART NO.	PARTS NAME	SIZE	Q`TY	NOTE
41	ST039304	TAPPING SCREW	M3.5x12(AB)	2	2HP
	SF059300	PAN HEAD BOLT W/FLANGE	M5x12	2	3HP
42	136019	WIRE CONECTOR	224-201	6	
43	130480	SWITCH PLATE		1	2HP
	130481	SWITCH PLATE		1	3HP
44	SR089400	HEX SOCKET BOLT	M8x16	2	
45	WF083030	FLAT WASHER	M8xφ30	2	
46	135016	UPPER WHEEL SLDING BRACKET		1	
47	SR061000	HEX SOCKET BOLT	M6x50	1	
48	BR000044	RIVET	φ3.2x10	8	
49	SR060200	HEX SOCKET BOLT	M6x10	3	
50	135004	LIMPID PIECE		2	
51	SJ059400	HEX SOCKET BOTTOM HEAR SCREW	M6x10	2	
52	WS050000	SPRING WASHER	M5	2	
53	WF051210	FLAT WASHER	M5xψ12	2	
54	NL081300	NYLON NUT	M8	1	
55	130471	UPPER WHEEL COVER		1	
56	SH060500	HEX HEAD BOLT	M6x25	3	
57	WF061310	FLAT WASHER	M6xφ13	6	
58	135051	BRUSH		3	
59	SR060500	HEX SOCKET BOLT	M6x25	1	
60	135041	KNOB		3	
61	NL061000	NYLON NUT	M6	9	
62	136013	STRAIN RELIEF	PG13.5	2	
63	135567	HEIGHT POINTER		1	
64	NH081300	NUT	M8	1	
65	SH080700	HEX HEAD LOLT	M8x35	1	
66	135022	KNOB SCREW	M10x20	1	
67	135020	KNOB SCREW	M10x53	1	
68	135028	LOCATE HANDLE	M10	1	
69	135030	CAM		1	
70	135038	LOCATE BLOCK		1	
71	620021	KNOB		1	
72	620020	LEVER ROD		1	
73	NH121900	NUT	M12	1	
74	135036	SHAFT		1	
75	SJ080400	HEX SOCKET BOTTOM HEAD SCREW	M8x20	4	
76	WS080000	SPRING WASHER	M8	4	
77	198013	HANDLE	M8	1	
78	130377	PLATE		1	
79	SS080400	SET SCREW	M8x20	4	
80	NH081300	NUT	M8	4	

ITEM	PART NO.	PARTS NAME	SIZE	Q'TY	NOTE
81	130460	LOWER WHEEL SHAFT		1	
82	MH130470	MOTOR	1.5KW/230V/50Hz/1PH	1	
	MH130471	MOTOR	2.25KW/230V/50Hz/1PH	1	
83	200426	HANDLE		1	
84	WS100000	SPRING WASHER	M10	2	
85	135112	MOTOR FIXED PLATE		1	
86	SJ080400	HEX SOCKET BOTTOM HEAD SCREW	M8x20	4	
87	135081	PLATE		1	
88	ST049210	TAPPING SCREW	M4x8(B)	2	
89	135065	LOCATE BLOCK		1	
90	WF081818	FLAT WASHER	M8xφ18	4	
92	130355	MOTOR PULLEY		1	
93	LJ029090	MULTI-GROOVE BELT	290J9	1	
94	SS089100	SET SCREW	M8x6	4	
95	130453	TOOL BOX COVER		1	
97	130474	EXTEND PLATE		1	
98	SR100700	HEX SOCKET BOLT	M10x35	1	
100	IC130471	EMERGENCY SWITCH CORD	0.75x2Cx1M	1	
101	LM002004	EMERGENCY SWITCH LABELING		1	
102	994817A	EMERGENCY SWITCH		1	
103	WS100000	SPRING WASHER	M10	2	
104	WF102320	FLAT WASHER	M10xφ23	2	
105	SP040610	PAN HEAD BOLT	M4x30(大扁頭)	2	
106	130266	DOOR LATCH SWITCH(ASM)	AZD-S11	1	
107	WF040808	FLAT WASHER	M4xφ8	2	
108	NF040700	HEX NUT W/FLANGE	M4	4	
109	SP040200	PAN HEAD SCREW	M4x10	2	
110	SF050200	PAN HEAD BOLT W/FLANGE	M5x10	2	
111	SR060400	HEX SOCKET BOLT	M6x20	3	
112	135054	PLASTIC WASHER	φ6xφ13 T=1.5	2	
113	130478	PROTECT COVER		1	
114	NL050800	NYLON LOCK HEX NUT	M5	2	
115	SR089400	HEX SOCKET BOLT	M8x16	1	
116	135073	STEP SCREW		1	
117	135054	PLASTIC WASHER	φ6xφ13 T=1.5	1	
118	130477	SLIDING PLATE		1	
119	SH089400	HEX HEAD BOLT	M8x16	1	
120	WF102320	FLAT WASHER	M10xφ23	1	
121	QF130455	FENCE SET (ASM)		1	
122	130467	BUSHING		1	
123	SH100700	HEX HEAD BOLT	M10x35	1	
124	WF082030	FLAT WASHER	M8xφ20	1	
125	NH081304	HEX NUT	M8	2	

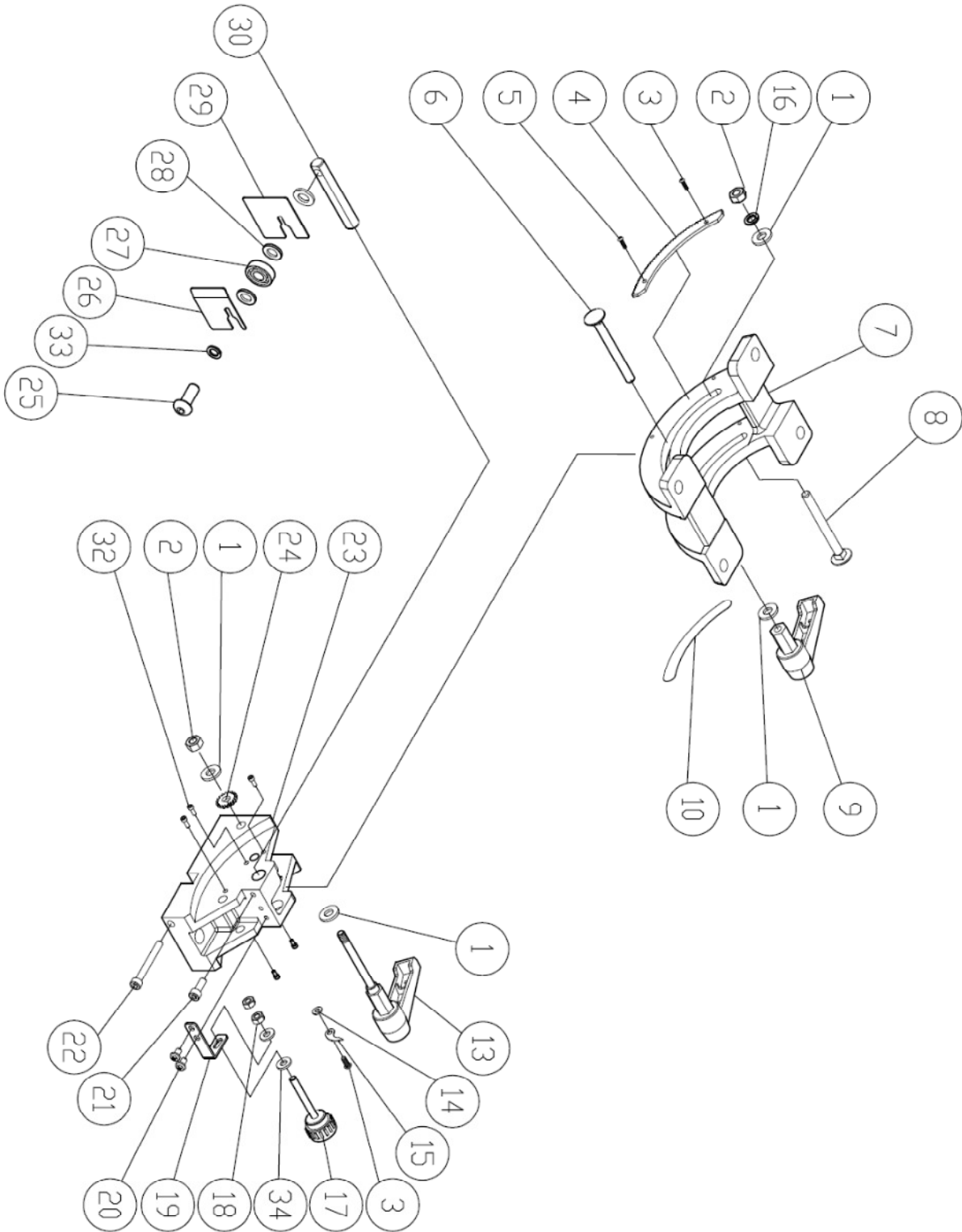
ITEM	PART NO.	PARTS NAME	SIZE	Q`TY	NOTE
126	130456	TABLE	21-3/4"x16"	1	
127	135010	TABLE INSERT		1	
128	135517	QUICK RELEASE HANDLE		1	
129	SS069300	SET SCREW	M6x12	2	
130	IC130470	POWER CORD	1.0x3Cx3.1M(SAA)	1	2HP
	IC130472	POWER CORD	1.5x3Cx2.2M(SAA)	1	3HP
131	SJ080400	HEX SOCKET BOTTOM HEAD SCREW	M8x20	4	
132	WS080000	SPRING WASHER	M8	4	
133	AB135530	GUIDE BRACKET(ASM)		1	
134	NH081300	NUT	M8	1	
135	SR059300	HEX HEAD BOLT	M5x12	2	
136	WF051320	FLAT WASHER	M5xψ12	2	
137	130473	BLADE GUARD COVER		1	
138	WF081820	FLAT WASHER	M8xφ18	4	
139	WS080000	SPRING WASHER	M8	4	
140	SH080500	HEX HEAD BOLT	M8x25	4	
141	135006	HANDLE WHEEL		1	
142	SR060400	HEX SOCKET BOLT	M6x20	1	
143	AB135092B	SAW BLADE ADJUSTMENT(ASM)		1SET	
144	AB135095C	SAW BLADE ADJUSTMENT(ASM)		1SET	
145	AB198101	MITER GAUGE ASS'Y		1SET	
146	AB135250	TRUNNION SUPPORT BRACKET(SET)		1SET	
147	WF061620	FLAT WASHER	M6xψ16	2	
148	WF081820	FLAT WASHER	M8xψ18	5	
149	SR069300	HEX SOCKET BOLT	M6x12	2	
150	ST039304	TAPPING SCREW	M3.5x12(AB)	4	3HP
151	136623	SWITCH LOCATE PLATE		1	3HP
152	SS050100	SET SCREW	M5x5	3	
153	NL101700	NYLON LOCK HEX NUT	M10	1	

MODEL NO. : 14 Inch Band Saw
 PART NO. : AB130455
 FENCE SET



Item	Part NO	Description	Size	Qty
28	AC198071	FENCE(ALL)	505	1
27	198008	BRACKET	T-3	1
26	WF061310	FLAT WASHER	M6x13	2
25	SF049200	PAN HEAD BOLR W/FLANGE	M4x8	1
24	SH060400	HEX HEAD BOLT	M6x20	2
22	VS060000	SPRING WASHER	M6	2
21	LM001036	SCALE		1
20	ST039300	TAPPING SCREW	M3.5x12	2
18	200527	MOVING PLATE		1
17	198014	GUARD PIECE		2
16	SF049100	PAN HEAD BOLR W/FLANGE	M4x6	2
15	NH081300	NUT	M8	1
13	198004	FIXED LUMP		1
12	SR060500	HEX SOCKET BOLT	M6x25	4
11	198007	CONVEX		1
10	136470-1	NYLON PIECE		1
09	198013	HANDLE		1
08	WF082320	FLAT WASHER	M8xø23	1
07	130455	SUPPORT TUBE		1
06	130465	LOCK KNOB	M8x50	1
05	198006	SPRING WASHER		1
04	198005	SHAFT		1
03	198003	FIXED SHAFT		2
02	198002	ADJUST BASE		1
01	198018	FIXED BASE	640	1

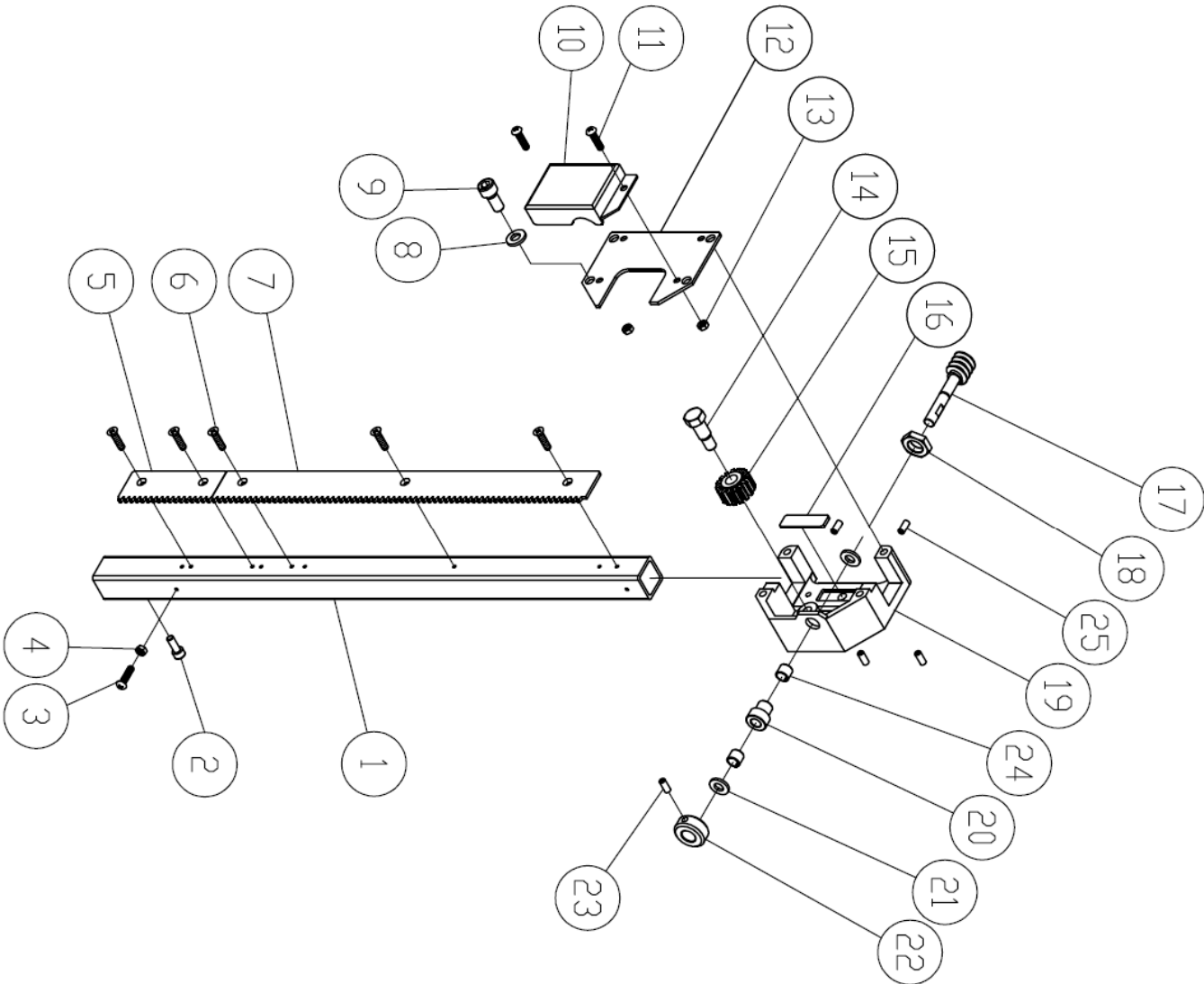
TRUNNION SUPPORT BRACKET ASM (AB135250)



ITEM	PART NO	PARTS NAME	SIZE	Q'TY	Note
1	WF081820	FLAT WASHER	M8xφ18	4	
2	NL081300	NYLON NUT	M8	2	
3	SP049100	PAN HEAD BOLT	M4x6	2	
4	135052	GEAR PLATE		1	
5	SN049100	COUNTER SUNK BOLT	M4x6	1	
6	SC081700	CARRPIAGE BOLT	M8x85	1	
7	135251	TRUNNION BLOCK		1	
8	SC081600	CARRIAGE BOLT	M8x80	1	
9	135044	HANDLE		1	
10	LM001182	ANGLE LABEL		1	
13	135069	DISAFFILIATE RAPIDLY		1	
14	WF040808	FLAT WASHER	M4xφ8	1	
15	135078	POINTER		1	
16	WS080000	SPRING WASHER	M8	1	
17	135254	ADJUST BOLT	M6	1	
18	NH061000	NUT	M6	2	
19	135253	ADJUST PLATE		1	
20	SP059200	PAN HEAD BOLT W/FLANGE	M5x8	2	
21	SR069400	HEX SOCKET BOLT	M6x16	1	
22	SR061000	HEX SOCKET BOLT	M6x50	1	
23	135250	TRUNNION SUPPORT BRACKET		1	
24	135061	SMALL GEAR		1	
25	SJ100600	HEX SOCKET BOTTON HEAD SCREW	M10x30	1	
26	135123	RIGHT COVER		1	
27	BB600002	BALL BEARING	6000ZZ	1	
28	WF102020	FLAT WASHER	M10xφ20	3	
29	135122	LEFT COVER		1	
30	135252	ADJUST BLOCK		1	
32	SR059130	HEX SOCKET BOLT	M5x6	6	
33	WS100000	SPRING WASHER	M10	1	
34	WF061310	FLAT WASHER	M6xφ13	2	

GRUIDE BRACKET ASM

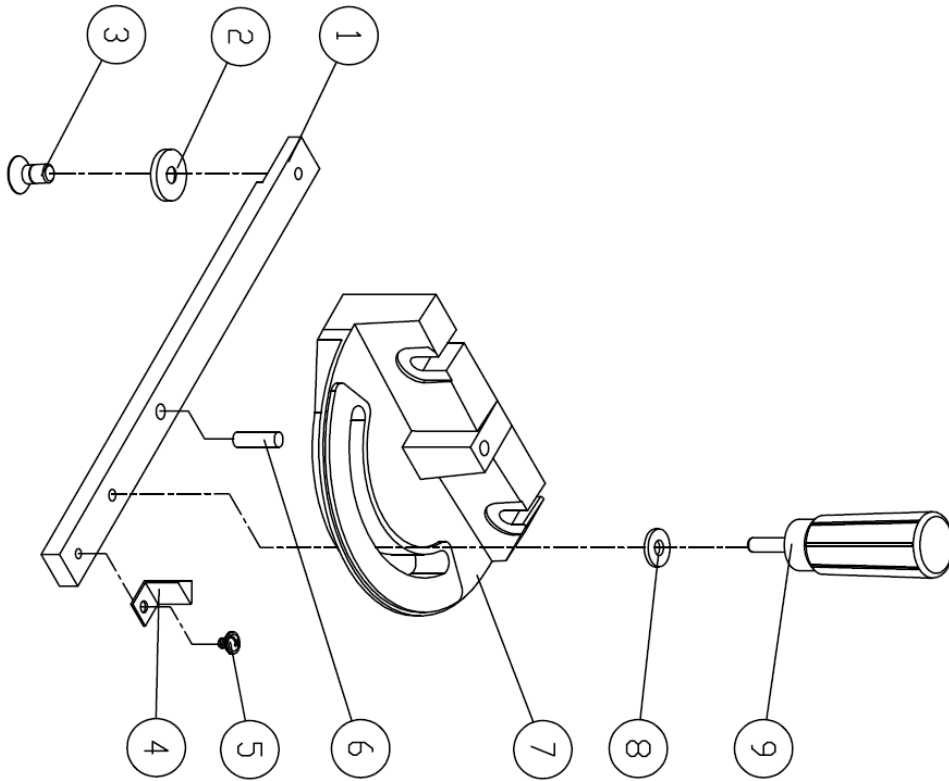
(AB135530)



ITEM	PART NO	PARTS NAME	SIZE	Q'TY	Note
1	135530	UPPER GUIDE TUBE		1	
2	SR060200	HEX SOCKET BOLT	M6x10	2	
3	SP040200	PAN HEAD BOLT	M4x10	1	
4	NH040700	NUT	M4	1	
5	136465	EXTEND GEAR		1	
6	SN049200	COUNTER SUNK BOLT	M4x8	5	
7	136466	RACK		1	
8	WS080000	SPRING WASHER	M8	4	
9	SR089400	HEX SOCKET BOLT	M8x16	4	
10	136469	COVER		1	
11	SF050200	PAN HEAD BOLT W/FLANGE	M5x10	2	
12	135046	COVER		1	
13	NH050800	NUT	M5	2	
14	016320	FIXED SCREW		1	
15	136484	GEAR		1	
16	135062	FIXED PLATE		1	
17	135033	WORM CYLINDER		1	
18	136473	NUT		1	
19	135050	GUIDE BRACKET		1	
20	136453	BUSHING		1	
21	200069	FIBER WASHER		2	
22	135015	FIXED BUSHING		1	
23	SS050100	SET SCREW	M5x5	2	
24	BD101201	BUSHING BRARING	DU 10x12	2	
25	990306	NYLON SET SCREW	M7x10	4	

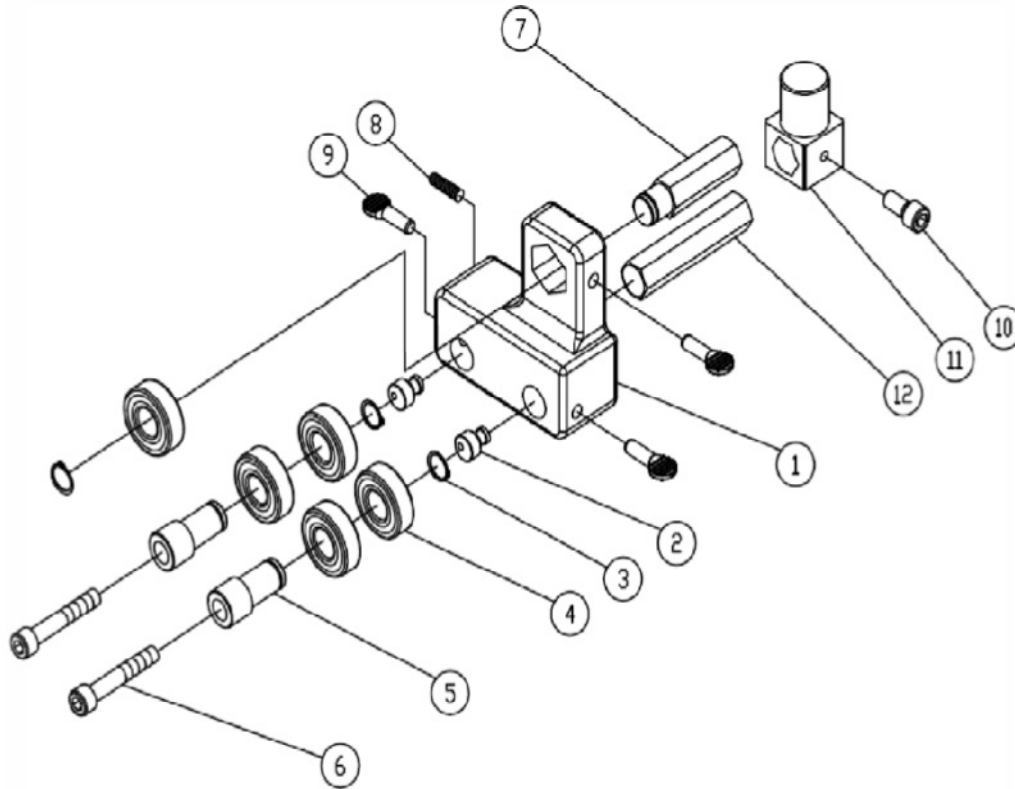
MITER GAUGE ASSM

(AB198101)



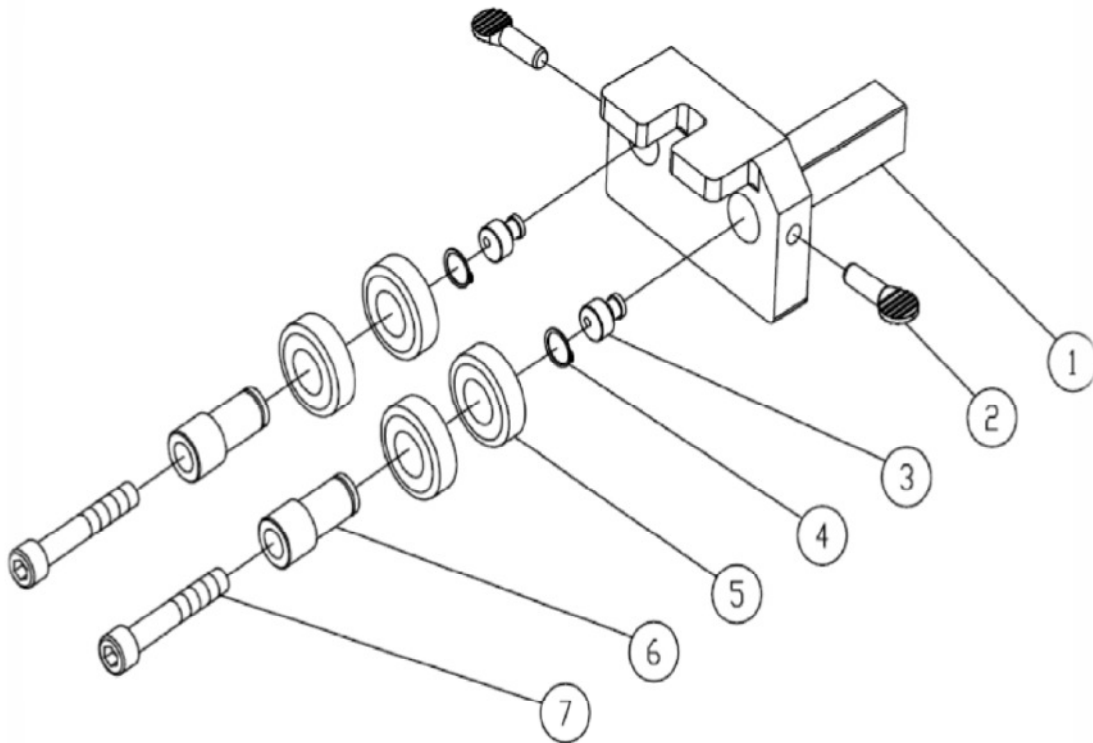
Item	Part ND	Description	Size	Q'ty
09	198105	HANDLE		1
08	198104	NYLON WASHER		1
07	198106	MITER GAUGE BODY		1
06	198107	STEEL PIN	∅6.5x10	1
05	SF059200	PAN HEAD BOLT W/FLANGE	M5x8	1
04	198103	POINTER		1
03	SN069200	COUNTER SUNK BOLT	M6x6	1
02	198102	GUIDE PIECE		1
01	198101	GUIDE BAR		1

SAW BLADE ADJUSTMENT ASM – UPPER
(AB135092B)



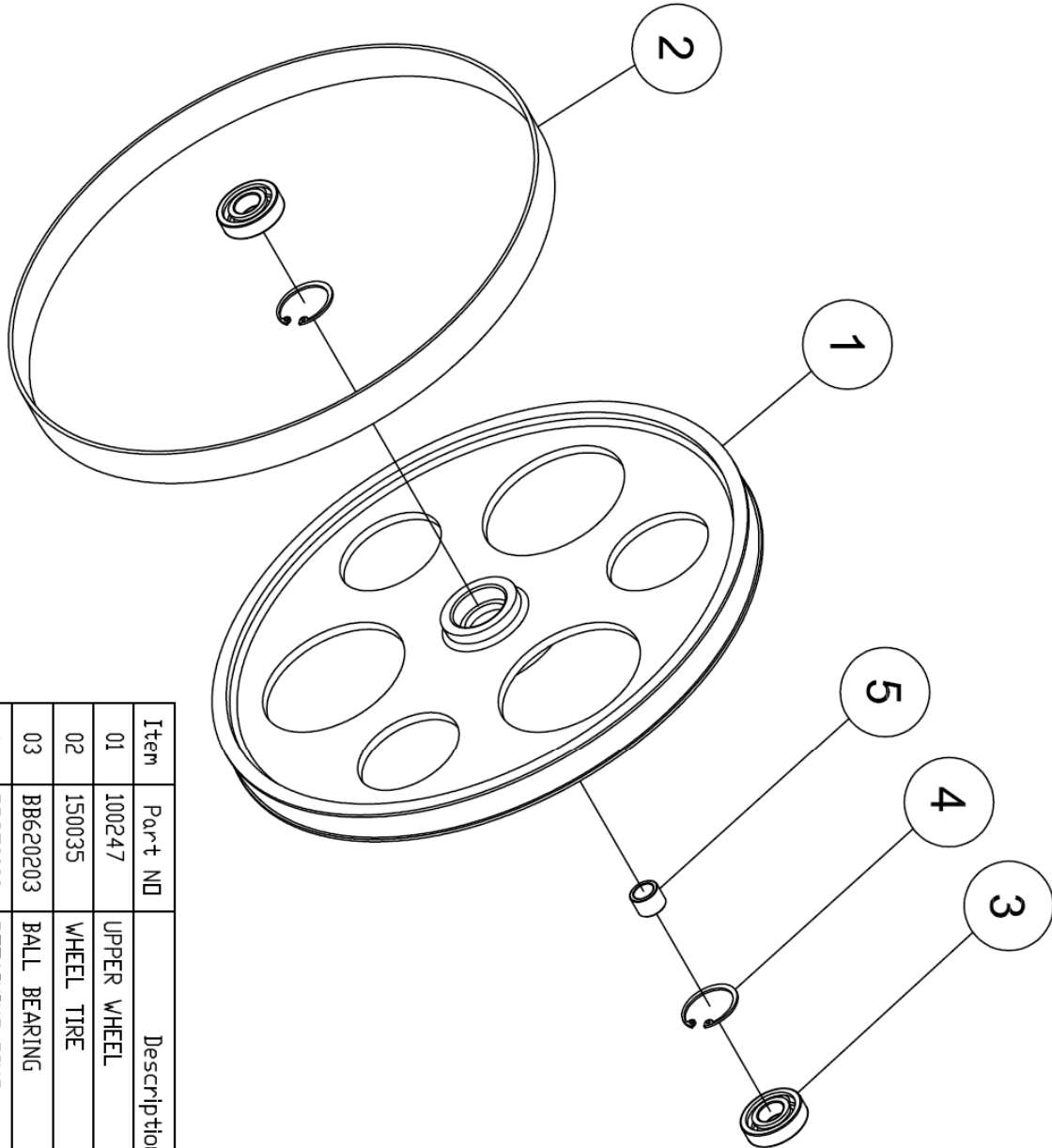
Item	Part NO	Description	Size	Q'ty
1	135091	UPPER BLADE GUIDE SUPPORT		1
2	135124	BIAS SHAFT		2
3	RS150000	RING	S15	3
4	BB620202A	BALL BEARING	6202ZZ	5
5	136445	HANDLE BUSHING		2
6	SR060703	HEX SOCKET BOLT	M6x35	2
7	135060	UPPER SPACING SLEEVE		1
8	SS060200	SET BOLT	M6x10	1
9	150013	THUMB SCREW	M6x16	3
10	SR069300	HEX SOCKET BOLT	M6x12	1
11	135057	UPPER GUIDE SUPPORT BLOCK		1
12	135053	ADJUST BAR		1

SAW BLADE ADJUSTMENT - LOWER (AB135095C)



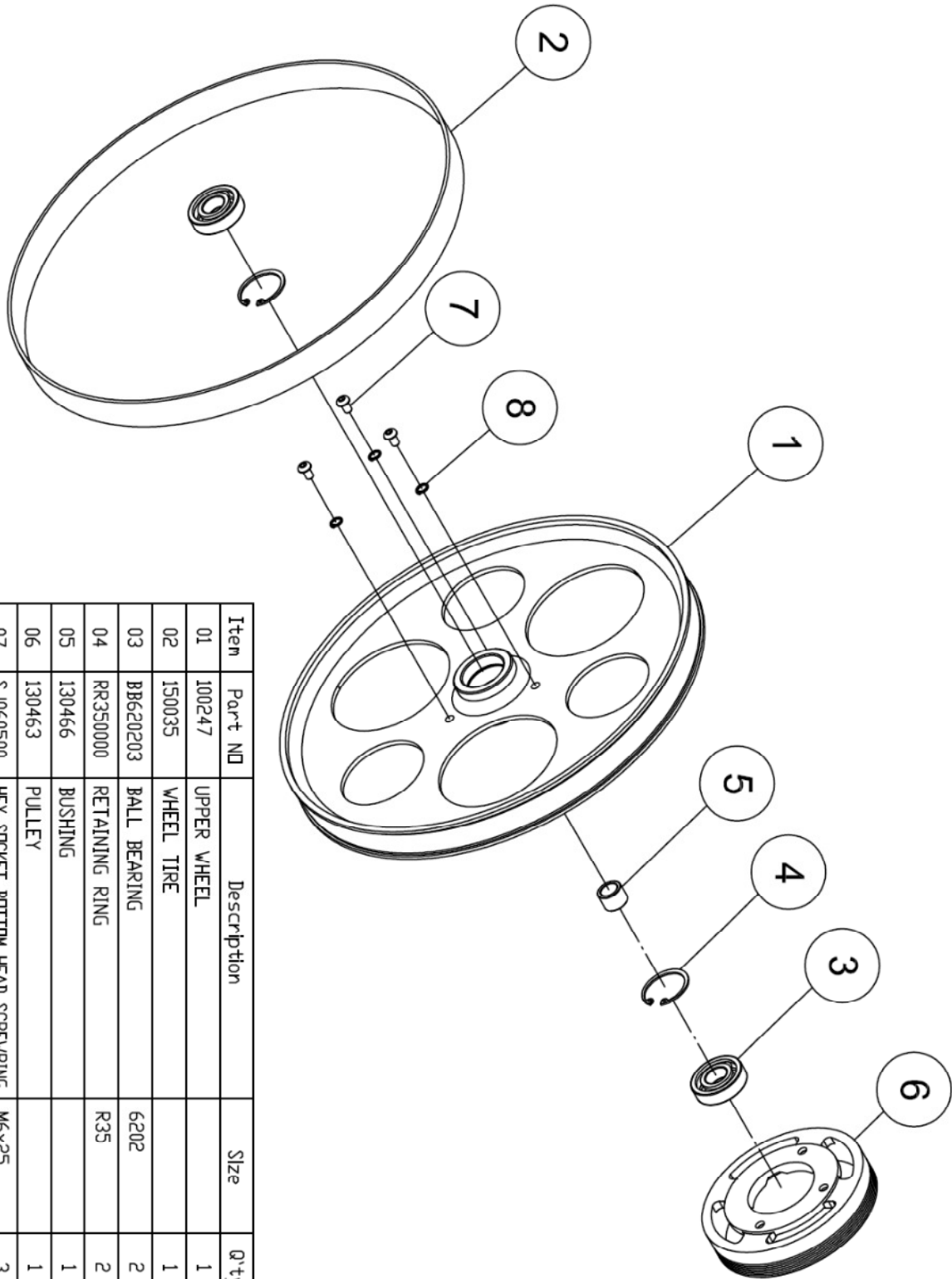
Item	Part NO	Description	Size	Qty
1	135125	LOWER BLADE GUIDE SUPPORT		1
2	150013	THUMB SCREW	M6x16	2
3	135124	BASE SHAFT		2
4	RS150000	RETAINING RING	S15	2
5	BB620202A	BALL BEARING	6202ZZ	4
6	136445	HANDLE BUSHING		2
7	SR060700	HEX SOCKET BOLT	M6x35	2

UPPER WHEEL ASM (AB130466)



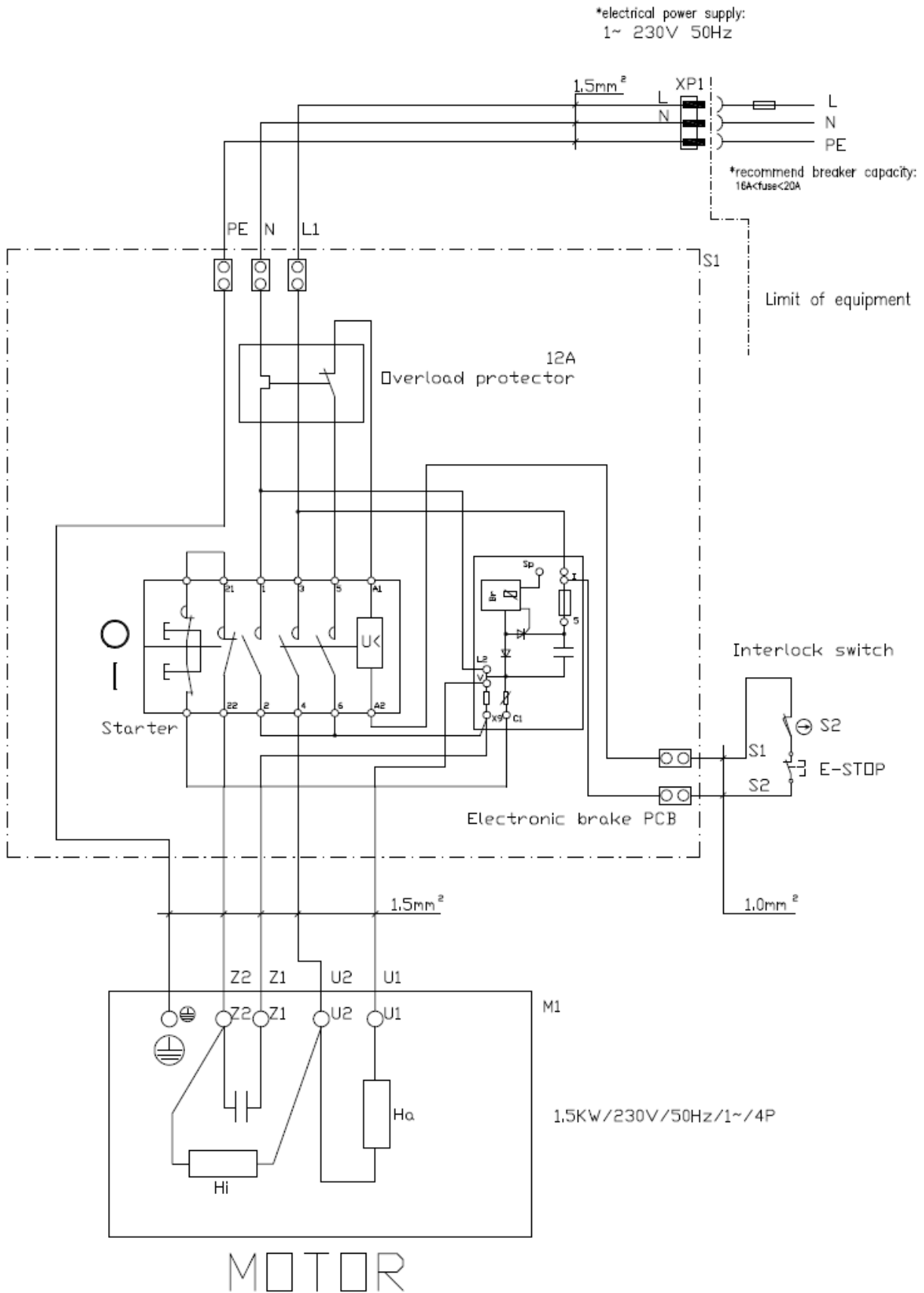
Item	Part ID	Description	Size	Q'ty
01	100247	UPPER WHEEL		1
02	150035	WHEEL TIRE		1
03	BB620203	BALL BEARING	6202	2
04	RR350000	RETAINING RING	R35	2
05	130466	BUSHING		1

LOWER WHEEL ASM (AB130463)



Item	Part NO	Description	Size	Q'ty
01	100247	UPPER WHEEL		1
02	150035	WHEEL TIRE		1
03	BB620203	BALL BEARING	6202	2
04	RR350000	RETAINING RING	R35	2
05	130466	BUSHING		1
06	130463	PULLEY		1
07	SJ060500	HEX SOCKET BOTTOM HEAD SCREW/RING	M6x25	3
08	VS060000	SPRING WASHER	M6	3

7. WIRING DIAGRAM





Tools & Machinery

Maxis Distribution Pty Ltd
ABN 93 605 273 989

info@maxis.com.au

Phone: 1300 767 366
International: +61 3292 0392
128 Ingleston Road, Wakerley
Queensland Australia 4154

www.maxis.com.au