

// TELL MUM &  
DAD, I'D LOVE A  
NEW TOOL FROM  
CARBATEC THIS  
CHRISTMAS //



**DON'T LEAVE IT  
TO CHANCE!**

**carbatec**  
THE HOME OF WOODWORKING

## CHRISTMAS GIFT GUIDE



**Specials valid  
until Christmas  
Eve 2019**

[www.carbatec.com.au](http://www.carbatec.com.au)  
1800 658 111



**GRAB A BARGAIN  
THIS CHRISTMAS!**



KR-K4MS  
**KREG JIG K4  
MASTER SYSTEM**

WAS \$229.00  
**NOW \$199.00**

- Removable Drill Guide for bench top and portable use
- Drill Guide includes 3-hole fixed spacing
- For use with materials 12.7mm to 38mm thick in 3.2mm incremental settings
- Dust-Collection Shroud collects wood chips as you work
- Material Support Stop for consistently repeating hole spacing's
- Hardened-Steel Kreg Drill Guides feature a lifetime warranty



## To our valued customers...

This Christmas we'd like to take the opportunity to thank you for supporting our family business. It's an honour for us to be part of this amazing and creative community.

We've had a busy year at Carbatec sourcing and designing new and innovative products so we're looking forward to a bit of downtime with family and friends. Whatever your plans this Christmas, we wish you and your family a safe and happy time.

**Merry Christmas & happy making!**

**Simon Lowe & The Carbatec Team**



## TREND

**trend**  
routing technology

### TREND-PRO AIRSHIELD PRO RESPIRATOR



was \$495.00  
**NOW \$459.00**



### STEALTH-ML-ANZ AIR STEALTH HALF MASK MEDIUM/ LARGE

was \$59.95  
**NOW \$52.95**



### STEALTH-SM-ANZ AIR STEALTH HALF MASK SMALL/ MEDIUM

was \$59.95  
**NOW \$52.95**



### TREND-PRO 4 TREND-PRO BATTERY 8 HOUR

was \$95.00  
**NOW \$79.00**



### STEALTH-3-5 AIR STEALTH NUISANCE FILTER 5 PAIR

was \$109.95  
**NOW \$99.00**



### TREND-PRO-3 VISOR OVERLAY - CLEAR PK10

was \$45.00  
**NOW \$39.00**



### STEALTH-2 AIR STEALTH MASK STORAGE CASE

was \$34.95  
**NOW \$29.00**



### TREND-PRO-1 THP2 FILTER PACK (PAIR)

was \$59.00  
**NOW \$52.95**



### STEALTH-1-5 AIR STEALTH P3 FILTER 5 PAIR

was \$89.00  
**NOW \$79.00**

# TIMBER

Give your project the best start with our selection of quality timber - available at a 10% discount this Christmas! We've had exotics such as Wenge, Paduak, Purpleheart, Bubinga and Rock Maple, along with native species such as Blackwood, Old Maple, Silky Oak, Red Cedar, Myrtle and many more recently. Stock is only available in-store and varies by location and shipment, so be sure to drop by and check our current offering.



10% OFF ALL TIMBER

# GRASPEGO



**GRA-FC-R50**  
**GRASPEGO FOR F-CLAMPS AND HOLD DOWNS**

**\$89.00**



Clamps not included

**GRA-OH-R50**  
**GRASPEGO FOR BAR CLAMPS AND HOLD DOWNS**

**\$89.00**

**GRA-WB-FT60-19**  
**GRASPEGO FOR WORKBENCH 19MM DOG**

**\$125.00**

**GRA-WB-FT60-20**  
**GRASPEGO FOR WORKBENCH 20MM DOG**

**\$125.00**

BUY 2 SAVE **5%**

BUY 3 SAVE **10%**



JN-BX150P-PACK  
**CARBATEC 150MM  
 BENCHTOP JOINTER W/  
 SPIRAL HEAD**

**\$659.00** with stand



JN-BX200P-PACK  
**CARBATEC 200MM  
 BENCHTOP JOINTER W/  
 SPIRAL HEAD**

**\$949.00** with stand



DC-500H  
**CARBATEC 1HP DUST  
 COLLECTOR**

WAS \$269.00  
**NOW \$239.00**

- 500CFM
- Casters for mobility
- 5 Micron needle felt filter bag
- Magnetic safety switch
- One - 4" (100mm) dust port
- 1hp motor



BS-345H-PACK  
**CARBATEC 14" TWO  
 SPEED BANDSAW**

**\$899.00** with safety kit



BS-245H-PACK  
**CARBATEC 10"  
 BANDSAW**

**\$499.00** with safety kit



CT-BX-STAND  
**STAND TO SUIT BENCHTOP MACHINES**

**\$109.00**

A strong and stable platform for mounting your Carbatec Benchtop Thicknesser and Jointers. Pre-drilled to make this genuine (not generic) Carbatec accessory a simple addition. Suits Carbatec models JN-BX150P, JN-BX200P, TH-B317P and TH-BX330P, and all mounting bolts, nuts and washers are supplied.

- Heavy steel construction
- Flat packed and ready to assemble
- Non slip feet



**WL-B440P-PACK**  
**CARBATEC PRO MINI LATHE**  
**STARTER PACK**

WAS \$1,042.00  
**NOW \$879.00**

The extensive knowledge used to produce our other quality Carbatec lathe models have been distilled into this little machine. Heavy cast iron construction provides heft and minimises vibration. The belt cover is easily opened to access and change the set belt positions for three distinct speed settings. This is easily our best value mini lathe representing both great price but also great performance. This value pack has been put together with our favourite Nova G3 Woodturning Chuck and matching insert.

The Nova G3 is the ideal choice for mini to mid-size lathes. A great quality all round chuck for beginner to advanced users, that is compatible with the large range of Nova accessory jaws. Being a keyed chuck, it offers the advantage of simple one-handed adjustments.

Also included in this special kit is the full size Carbatec TJ-6 Chisel Set. This six piece set compares favourably with European and Australian manufactured products, but at half the price. They are aimed at the beginner to provide the basic tools for a variety of turning jobs. The set contains a 10mm Spindle Gouge; 13mm Bowl Gouge; 22mm Roughing Gouge; 18mm Round Nose Scraper; 20mm Diamond Parting Tool and a 25mm Oval Skew Chisel. Made from High Speed Steel (HSS).

This is a great value pack with almost everything you need to start small turning projects. Everything except perhaps timber... but we can help you out with that too!

ECONOMY BELT/DISC SANDER



BDS-1523H  
**CARBATEC 6" X 9" BELT /  
 DISC SANDER WITH STAND**

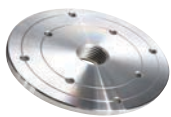
WAS \$499  
**NOW \$449.00**

Our BDS-1523H Belt and Disc sander represents excellent value for money and includes features commonly found on more expensive machines, such as a graphite slip cloth under the belt and hook and loop discs as standard. Graphite slip cloth beneath the belt improves machine performance by reducing friction between the machine bed and the sanding belt. This reduces the risk of burning your work piece as well as lightening the load on the motor thereby improving the longevity of your belts. The belt can also be positioned in an upright position if you are doing end grain work or longer edge work where more room is required.

- Powerful 3/4 HP motor
- 6" (150mm x 1220mm) belt x 9" (230mm) belt
- Graphite slip cloth under belt
- Hook and loop disc
- 2-1/4" dust collection outlet



15% OFF FACEPLATES



CFP-150-114  
**CARBATEC  
 FACEPLATE  
 150MM 1-1/4" x  
 8TPI THREAD**

WAS  
 \$59.95  
**NOW  
 \$50.96**



CFP-150-M30  
**CARBATEC  
 FACEPLATE  
 150MM M30 x  
 3.5MM THREAD**

WAS  
 \$59.95  
**NOW  
 \$50.96**



CFP-75-M30  
**CARBATEC  
 FACEPLATE  
 75MM M30 x  
 3.5MM THREAD**

WAS  
 \$28.95  
**NOW  
 \$24.61**



CFP-75-114  
**CARBATEC  
 FACEPLATE  
 75MM 1-1/4" x  
 8TPI THREAD**

WAS  
 \$28.95  
**NOW  
 \$24.61**



CFP-100-114  
**CARBATEC  
 FACEPLATE  
 100MM 1-1/4" x  
 8TPI THREAD**

WAS  
 \$28.95  
**NOW  
 \$24.61**



CFP-100-M30  
**CARBATEC  
 FACEPLATE  
 100MM M30 x  
 3.5MM THREAD**

WAS  
 \$28.95  
**NOW  
 \$24.61**



**TH-BX330P-PACK  
CARBATEC 330MM  
BENCHTOP  
THICKNESSER  
WITH SPIRAL  
CUTTERHEAD**



**\$1,049.00  
with stand**

- 26 HSS spiral blades, each blade has two cutting edges
- Minimum stock thickness of 3.2mm
- Maximum size of 150mmH x 330mmW
- Dust port 4" or 2-1/2" (Reducer included) for Dust Collector or 'shop vac' connection
- Front & centre mounted cutting depth gauge for easy setup
- Pre-set final cut depth settings for simple standard sized boards
- Maximum cutting width 330mm
- Folding & adjustable in/outfeed tables
- Polyurethane in/outfeed rollers will not damage workpieces
- Lightweight – compact design means it can be moved easily.



**TH-B317P-PACK  
CARBATEC 317MM  
BENCHTOP  
THICKNESSER WITH  
STRAIGHT BLADES**



**\$679.00  
with stand**

The Carbatec TH-B317P Professional Benchtop Thicknesser features a powerful 1800W motor and can handle full width cuts in all types of timber. It will accept boards up to 150mm deep and 317mm wide and its two double sided replaceable blades will make effortless cuts to become a valuable addition to your workshop. The slot located blades can be slightly offset from each other in the case of a 'knick'.

- 1800W Universal motor
- Folding infeed and outfeed tables
- Snipe reducing adjustment screws
- Low friction table
- Double Sided blades factory fitted
- Blade Knick offset ability
- Left or Right exit dust chute
- 2-1/2" dust port connection



**TJ-6  
CARBATEC 6PCE  
WOODTURNING  
CHISEL SET**

WAS \$179.00  
**NOW \$169.00**



**MMD-80A  
CARBATEC METAL  
DETECTOR WITH  
CARRY BAG**

WAS \$89.95  
**NOW \$69.00**



**SSKIT-01  
120PCE SPOON &  
CARVING SANDING KIT**

**\$27.95**



**SK-5PCE  
CARBATEC 5PCE  
SAFETY KIT**

WAS \$18.95  
**NOW \$13.95**

# BESSEY

20% OFF ALL BESSEY



**BES-LM30**  
Q/A CLAMP  
- LIGHT DUTY -  
300MM

WAS \$18.95  
**NOW \$15.00**



**BES-TPN30**  
Q/A CLAMP-  
STANDARD-  
300X100MM

WAS \$42.95  
**NOW \$35.00**



**BES-VAS-23**  
BAN700 BAND  
CLAMP W/4VARIO  
ANGLES

WAS \$72.95  
**NOW \$59.00**



**BES-TG30S12-2K**  
Q/A CLAMP -  
300X120MM

WAS \$55.00  
**NOW \$39.00**



**BES-KRE60-2K**  
Q/A REVO BODY  
CLAMP - 600MM

WAS \$105.00  
**NOW \$85.00**



**BES-STC-HH70**  
TOGGLE CLAMP  
SELF ADJUSTING  
HORIZONTAL

WAS \$56.95  
**NOW \$42.00**

# ARBORTECH

**ARB-BAL-2000**  
ARBORTECH  
BALL GOUGE

WAS \$109.00  
**NOW \$95.00**



**ARB-PWC600**  
ARBORTECH  
POWER  
CARVING UNIT

WAS \$299.00  
**NOW \$269.00**



**ARB-MIN600**  
ARBORTECH MINI  
CARVER WITH  
GRINDER - NEXT  
GENERATION

WAS \$299.00  
**NOW \$269.00**



**ARB-IND400**  
ARBORTECH  
TURBOPLANE

WAS \$159.00  
**NOW \$145.00**



**ARB-PCH300**  
ARBORTECH  
POWER CHISEL SET

WAS \$275.00  
**NOW \$249.00**

10% OFF ALL ARBORTECH

# TORMEK



GREAT  
ACCESSORIES  
AVAILABLE

**TOR-T8**  
TORMEK WATER  
COOLED GRINDER **\$1,250.00**

**TOR-SVD-186**  
JIG FOR GOUGES & TURNING CUTTERS **\$174.00**

**TOR-SE-77**  
TORMEK NEW SQUARE EDGE JIG **\$129.00**

**TOR-BGM-100**  
BENCH GRINDER MOUNTING SET **\$165.00**

**TOR-TNT-708**  
TORMEK WOODTURNERS KIT **\$520.00**

**TOR-HTK-706**  
TORMEK HANDTOOL KIT INCLUDES TOR-SVM-00 **\$340.00**



## FLEXCUT

FLX-SPOON  
FLEXCUT SPOON  
CARVING JACK

WAS \$209.00  
NOW \$167.20

20%  
OFF ALL  
FLEXCUT



FLX-FR-310  
FLEXCUT 5PC PALM  
CARVING STARTER  
SET

WAS \$155.00  
NOW \$124.00



FLX-JKN88  
FLEXCUT WHITTLIN'  
JACK

WAS \$109.00  
NOW \$87.20



FLX-FR-405  
FLEXCUT DELUXE  
PALM SET

WAS \$259.00  
NOW \$207.20



FLX-JACK  
FLEXCUT CARVIN'  
JACK

WAS \$279.00  
NOW \$223.20

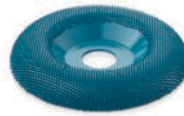


FLX-KN-500  
FLEXCUT 3PC  
KNIFE STARTER  
SET

WAS \$111.00  
NOW \$88.80

## KUTZALL

10% OFF ALL KUTZALL



KUTZ-DW412X70  
KUTZALL EXTREME 4 1/2"  
MEDIUM SHAPING DISH

WAS \$109.00  
NOW \$98.10



KUTZ-S-38-E  
KUTZALL ORIGINAL SPHERE  
BURR WITH 1/8" SHANK

WAS \$19.95  
NOW \$17.96



KUTZ-FT8330  
KUTZALL ORIGINAL 8" FLAT  
COARSE HAND RASP

WAS \$59.95  
NOW \$53.96

## PFEIL

15% OFF  
ALL  
PFEIL



PF-AXE  
PFEIL AXE

WAS \$199.00  
NOW \$169.15



PF-RLSET-12  
PFEIL 12 PC SET IN CANVAS  
ROLL

WAS \$709.00  
NOW \$602.65



PF-SET-4  
PFEIL 4PC D SIZE CARVING  
SET

WAS \$159.00  
NOW \$135.15



PF-PALM-6-C  
PFEIL 6PC PALM CARVING  
SET C

WAS \$239.00  
NOW \$203.15

05P22-01  
**VERITAS LOW ANGLE  
 BLOCK PLANE**

**\$279.00**



This is the best low angle block plane on the market, hands down.

Its higher side wings are ideal for shooting and the multiple finger grips on each side provide optimal control.

The combined blade advance and lateral adjustment is more sensitive and more accurate than any other adjustment mechanism. This is further maximised by two blade guide screws that prevent blade shifting.

05P25-01  
**VERITAS LOW ANGLE  
 SMOOTHING PLANE**

**\$399.00**



The Veritas® Low-Angle Smoothing Plane features a low cutting angle of 37° - the combination of a 12° bed and a 25° blade bevel facing up. This plane is great for general purpose smoothing work, while the angle minimises fibre tearing making it ideal for end grain work. The generous side wings also allow great stability for shooting style use. A fantastic all-purpose hand plane.



05P54-85  
**VERITAS FENCE  
 ASSEMBLY FOR  
 SHOOTING BOARDS**

**\$209.00**



05T05-05  
**VERITAS FINE  
 DOVETAIL SAW 20TPI**

**\$149.00**



17U06-30  
**VERITAS 4" DRAWKNIFE**

**\$129.00**



05P33-73  
**VERITAS PM-V11  
 FLAT BOTTOM  
 SPOKESHAVE**

**\$229.00**



05P82-24  
**VERITAS MINIATURE  
 PLOW PLANE**

**\$94.95**



05P82-22  
**VERITAS MINIATURE  
 BENCH PLANE**

**\$89.95**



05P84-01  
**VERITAS MINIATURE  
 SPOKESHAVE**

**\$79.95**



05P82-01  
**VERITAS MINIATURE  
 ROUTER PLANE**

**\$84.95**

# SHARPENING



O5M09-01  
VERITAS MK II HONING  
GUIDE

**\$129.00**



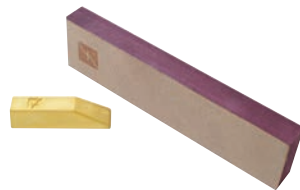
FLX-PW-12  
FLEXCUT SLIPSTROP  
KIT

WAS \$32.00  
**NOW \$25.60**



WS-6000  
JAPANESE  
WATERSTONE #6000

WAS \$54.95  
**NOW \$46.71**



FLX-PW-14  
FLEXCUT KNIFE STROP

WAS \$29.00  
**NOW \$23.20**



WS-1200  
JAPANESE  
WATERSTONE #1200

WAS \$39.95  
**NOW \$33.96**



FLX-PW-16  
FLEXCUT DUAL SIDED  
PADDLE STROP

WAS \$77.00  
**NOW \$61.60**

# TITEBOND

1. TITEBOND 3 ULTIMATE 3.785LT  
**\$59.50** TBD-3-3785ML
2. TITEBOND 3 ULTIMATE 946ML  
**\$29.00** TBD-3-946ML
3. TITEBOND II PREMIUM 3.785LT  
**\$55.00** TBD-2-3785ML
4. TITEBOND II PREMIUM 946ML  
**\$24.00** TBD-2-946ML
5. TITEBOND ORIGINAL 3.785 LT  
**\$48.00** TBD-1-3785ML
6. TITEBOND ORIGINAL 946ML  
**\$20.00** TBD-1-946ML
7. TITEBOND LIQUID HIDE 237ML  
**\$14.00** TBD-LH-237ML



# NOVA



## TK-DVR-DRILLPRES NOVA DVR DRILL PRESS

WAS \$2,949.00  
**NOW \$2,649.00**

**SAVE \$300 ON THE  
WORLDS MOST ADVANCED  
WOODWORKING DRILL PRESS**

The World's most powerful technologically advanced woodworking drill press. If you've not seen DVR technology before, there has never been a better time to see what it can do for you!



## TK-COMET-KIT NOVA COMET II LATHE WITH NOVA G3 REVERSIBLE CHUCK

WAS \$1,118.00  
**NOW \$949.00**

**BUY A COMET LATHE AND  
GET A NOVA G3 CHUCK  
FOR \$20! SAVE \$169!**

# AXIOM



Introducing the latest range of CNC's from Axiom Precision, the i2R Series - your Imagination to Reality. These machines represent a fully featured 'turnkey' CNC solution, at a whole new price point. With all alloy and steel construction, full ballscrew and prismatic guide setup and a 1HP air-cooled spindle with VFD, they are highly capable, precision quality machines. Available in three sizes:

AXIOM-I2R-4  
**NEW AXIOM I2R CNC MACHINE \$5,899.00**

AXIOM-I2R-6  
**NEW AXIOM I2R CNC MACHINE \$6,399.00**

AXIOM-I2R-8  
**NEW AXIOM I2R CNC MACHINE \$6,999.00**

**SEE ONLINE FOR OUR INTRO DEALS**

152-064-082  
**CMT 3D CNC SPIRAL CARVING BIT 0.8MM  
DIAMETER POINT**

WAS \$69.95  
**NOW \$62.96**

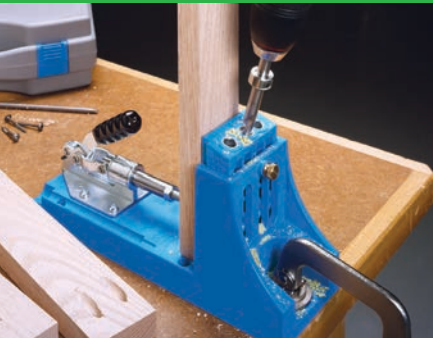
152-064-162  
**CMT 3D CNC SPIRAL CARVING BIT 1.6MM  
DIAMETER POINT**

WAS \$69.95  
**NOW \$62.96**

152-064-322  
**CMT 3D CNC SPIRAL CARVING BIT 3.2MM  
DIAMETER POINT**

WAS \$74.95  
**NOW \$67.46**





**KR-K4**  
**KREG JIG K4 POCKET HOLE SYSTEM** **\$149.00**

The perfect choice for DIY users and anyone new to woodwork. Whether you are building your first set of garage storage shelves or making simple repairs around the house, this Kreg Jig can help you finish the job in less time and with far less effort than you ever thought possible.



**KR-KWS1000**  
**KREG MOBILE PROJECT CENTRE** **\$299.00**

- Large 70cm x 80cm work surface and 360° access
- Locking table supports with easy release tabs
- Hole pattern on tables accept Kreg Bench Dogs and other accessories
- Included Kreg Bench Clamp with Automaxx® clamps vertically and horizontally
- Heavy-gauge steel legs provide a solid foundation
- Folds down in seconds for work on the go and easy storage
- Perfect for use with Kreg Joinery



**KR-KMA2700**  
**KREG ACCU-CUT SAW GUIDE**  
**\$149.00**



**KR-SK03**  
**KREG WOOD POCKET-HOLE SCREWKIT**  
**\$50.00**



**KR-PRS1015**  
**KREG LARGE RT FENCE**  
**\$349.00**



**KR-KHCRA**  
**KREG RIGHT ANGLE CLAMP**  
**\$53.00**



**KR-K4MS**  
**KREG JIG K4 MASTER SYSTEM**  
**\$199.00**



**KR-KWS500**  
**KREG TRACK HORSE**  
**\$199.00**



**KR-KMS8000M**  
**KREG PRECISION TRAK & STOP KITMETRIC**  
**\$239.00**



**KR-DB210**  
**KREG FOREMAN P/HOLE MACHINE**  
**\$629.00**



**KR-PRS1025**  
**KREG LARGE ROUTER TABLE TOP**  
**\$299.00**



**KR-KMA3700**  
**KREG ACCU-CUT XL SAW GUIDE**  
**\$259.00**



**KR-KJDECKSYS**  
**KREG DECK JIG SYSTEM**  
**\$129.00**



**KR-KHCCC**  
**KREG 90 DEGREE CORNER CLAMPNEW 2018**  
**\$60.00**



**KR-KPHJ320**  
**KREG POCKET-HOLE JIG 320**     **\$74.90**

- Portable jig for creating pocket-hole joints
- Works with materials from 13mm to 38mm thick
- Simple to set up and easy to use with convenient material-thickness stops
- Durable construction, lifetime drill-guide warranty
- Versatile for indoor and outdoor projects, and making household repairs
- Convenient variable pocket-hole spacing with twist-apart drill guides and removable spacers
- Secure positioning with anti-slip base and included clamp adapter
- Foolproof setup with a material-thickness gauge, positive stops, and easy-set drill bit and stop collar



**KR-KPHJ310**  
**KREG POCKET-HOLE JIG 310**     **\$36.90**

- Portable jig for creating pocket-hole joints
- Works with materials from 13mm to 38mm thick
- Simple to set up and easy to use with convenient material-thickness stops
- Durable construction, lifetime drill-guide warranty
- Versatile for indoor and outdoor projects, and making household repairs
- Secure positioning with anti-slip base
- Foolproof setup with a material-thickness gauge, positive stops, and easy-set drill bit and stop collar



**KR-K5MS**  
**KREG JIG**  
**K5 MASTER**  
**SYSTEM**

**\$279.00**

- Front-mounted handle makes clamping easy
- Ratcheting clamp mechanism adjusts without tools
- Storage wings provide built-in storage for bits and accessories
- Swiveling dust collection port accepts any standard vacuum hose
- Adjustable workpiece stop mounts on either side for easy repeat drilling



**KR-PRS2100**  
**KREG**  
**BENCHTOP**  
**ROUTER**  
**TABLE**

**\$419.00**

- Includes an anodized aluminium fence with independent sliding faces
- Rugged steel stand with vibration dampening rubber feet
- Edgebanded, reinforced MDF top 16" x 24" (406mm x 610mm) - height 16" (406mm)
- Full size Router Insert Plate 9.5mm x 235mm x 298mm with 3 Level-Loc Reducing Rings
- Unique Bottom Up insert plate levellers for levelling accuracy
- Includes a rugged fence with independent sliding faces



**KR-KPHA120**  
**KREG 310 JIG**  
**EXPANSION**  
**SPACERS (2-PACK)**

**\$18.90**



**KR-KPHA110**  
**KREG POCKET**  
**HOLE JIG**  
**EXPANSION PACK**

**\$33.90**

# BOOKS



B-0997870206  
**INFORMATION  
 ON STANLEY  
 CATALOGUE  
 NO. 34**

WAS \$39.00  
**NOW  
 \$35.10**



**10% OFF**  
 A GREAT RANGE OF BOOKS

1. **JUNK - BEAUTIFUL SHE SHEDS**  
 \$44.99 B-9781631869150
2. **BUILDING UNIQUE USEFUL KIDS FURNITURE 24 DIY PROJECTS**  
 \$29.69 B-9781610353250
3. **DUST CONTROL MADE SIMPLE**  
 \$44.99 B-9781600852480
4. **THE ART OF JOINERY JOSEPH MOXON CHRISTOPHER SCHWARZ**  
 \$36.00 B-0985077778
5. **CRAFTING WITH WOODEN CRATES AND PALLETS: 25 SIMPLE PROJECTS TO STYLE YOUR HOME**  
 \$33.29 B-9780486824239
6. **BY HAND AND BY EYE GEORGE WALKER JIM TOLPIN**  
 \$58.50 B-0985077754

7. **MULTI-AXIS SPINDLE TURNING: A SYSTEMATIC EXPLORATION**  
 \$47.69 B-9780764355349
8. **NAKED WOODWORKER DVD MIKE SIEMSEN**  
 \$42.30 B-0990623007
9. **MAKING FRAMES**  
 \$24.29 B-9781785003950
10. **ESSENTIAL WOODWORKER ROBERT WEARING**  
 \$39.60 B-0578060446
11. **SHAKER INSPIRATION BY CHRISTIAN BECKSVOORT**  
 \$14.00 B-9781732210035
12. **HANDS EMPLOYED RIGHT-THE FURNITURE MAKING OF JONATHAN FISHER (1768-1847)**  
 \$72.00 B-9781732210028
13. **WOODWORKING WITH HANDTOOLS: TOOLS, TECHNIQUES & PROJECTS**  
 \$44.99 B-9781631869396
14. **MAKE A JOINT STOOL FROM A TREE J ALEXANDER P FOLLENSBEE**  
 \$58.50 B-0985077709
15. **WOODWORKING IN ESTONIA BY ANTS VIIRES**  
 \$40.50 B-0990623090
16. **WORLD OF MINIATURES: FROM SIMPLE CABINS TO ORNATE PALACE**  
 \$44.99 B-9781784944025
17. **OUTDOOR WOODWORKING GAMES: 20 FUN PROJECTS TO MAKE**  
 \$26.99 B-9781784943745
18. **JOINERS WORK BY PETER FOLLANSBEE**  
 \$63.00 B-9781732210059
19. **STICKMAKING: THE COMPLETE GUIDE**  
 \$43.19 B-9781785004131
20. **TO MAKE AS PERFECTLY AS POSSIBLE ROUBO ON MARQUETRY**  
 \$71.10 B-0985077761
21. **THE INTELLIGENT HAND BY DAVID BINNINGTON SAVAGE**  
 \$63.00 B-9781732210042
22. **WOODWORKING BASICS**  
 \$25.19 B-9781784944087




**BORA-PM-4500  
BORA SPEEDHORSE  
SELF DEPLOYING  
LEGS**

WAS \$119.00  
**NOW \$107.10**



**BORA-PM-3500  
PORTAMATE SUPER DUTY  
UNIVERSAL MOBILE BASE  
680KG CAPACITY**

WAS \$199.00  
**NOW \$179.10**



**BORA-PM-3550  
PORTAMATE 4 SWIVEL  
WHEELS SUPERDUTY MOBILE  
BASE 680KG CAPACITY**

WAS \$259.00  
**NOW \$233.10**



**BORA-PM-1100  
UNIVERSAL MOBILE  
BASE KIT**

WAS \$95.00  
**NOW \$85.50**



**BORA-CK6S  
CENTIPEDE  
SUPPORT 6S  
2 x 4**

WAS \$109.00  
**NOW \$98.10**



**BORA-CK15S  
CENTIPEDE  
SUPPORT XL  
(15S) 4 x 8**

WAS \$229.00  
**NOW \$206.10**



**BORA-PM-8000  
PORTACUBE MITRESAW  
WORKSTATION**

WAS \$449.00  
**NOW \$404.10**



**BORA-PM-4000  
PORTABLE  
FOLDING MITRE  
SAW STAND**

WAS \$149.00  
**NOW \$134.10**



**BORA-PBR001  
WOOD RACK**

WAS \$69.00  
**NOW \$62.10**

**INCRA**

**BEAT THE PRICE RISE**



**IN-MITER1000HD  
INCRA 1000HD  
MITER GAUGE**

**\$299.00**



**IN-MITERV120  
INCRA V120  
MITRE GAUGE**

**\$139.00**



**IN-PRO160M  
INCRA 160MM  
PRECISION  
PROTRACTOR**

**\$54.00**



**IN-MITEREXPRESS  
INCRA MITER  
EXPRESS SYSTEM**

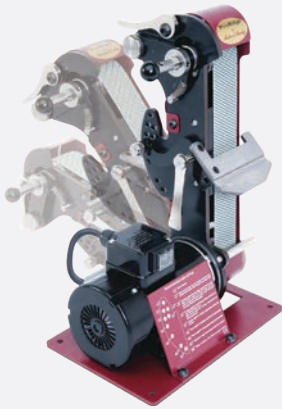
**\$259.00**



**IN-RULE150M/ IN-RULE300M  
INCRA MARKING RULE**

**150mm \$19.00  
300mm \$29.00**





**RSB-WPED01D  
ROBERT SORBY  
PROEDGE DELUXE  
SHARPENING  
MACHINE**

WAS \$949.00

**NOW \$854.10**



The Robert Sorby ProEdge offers effortlessly repeatable sharpening every time. Hugely versatile, this industrial strength machine is built to last and delivers astounding 'factory finish' results without fail. Sharpens bench, framing, carving and turning chisels, drill bits, plane irons, knives and garden tools.

- 9 commonly used preset angles
- Preset angles can be bypassed for custom sharpening
- Sharpening is rapid, without the fear of overheating that will damage edges
- No complex assembly required - ready to use right out of the box
- Industrial engineering and tooling on a small scale
- Jigs and belts designed for specific tools and edges.
- Includes: 1x Aluminium oxide 120grit belt, 1x Aluminium oxide 240grit belt, 1x Zirconium 60grit belt, Standard Gouge Jig, Fingernail Profile Jig, Sliding Skew Jig



**SAVE 15% ON SORBY  
PYROGRAPHY**

WAS \$299.00

**NOW \$254.15**

**RSB-PYRO240D  
PETER CHILD ARTISTS PYROGRAPHY  
MACHINE BY ROBERT SORBY**

The Peter Child Artist's Pyrography Machine from Robert Sorby is a highly regarded machine that is well sought after by professionals. It is powerful enough to handle the densest of timbers yet is comfortable to handle, making it ideal for the beginner as well. As with anything from Robert Sorby, the build quality is exceptional and will likely be the last pyrography pen you will ever buy.

Each pyrography machine contains:

- 1 pen
- 1 metre length of 25 standard wire gauge (SWG) to make your own points
- 6 spare nickel chromium nibs (five standard points in 25 SWG and one spoon point in heavier 24 SWG)
- A handy 12 page manual full of ideas.

**SAVE 10-15% ON EVERYTHING ROBERT SORBY**



**RSB-A36HS3T  
SORBY PEN  
TURNING SET**

WAS \$129.00

**NOW \$116.10**



**RSB-P612A12ST  
SORBY 12  
PC CARVING  
CHISEL SET**

WAS \$689.00

**NOW \$585.65**



**RSB-B330  
SORBY  
SPIRALLING  
SYSTEM**

WAS \$289.00

**NOW \$260.10**



**RSB-B6TROLL  
SORBY LARGE  
6PC LEATHER  
TOOL ROLL**

WAS \$79.95

**NOW \$67.96**



**RSB-W410  
SORBY  
SANDMASTER**

WAS \$94.95

**NOW \$85.46**



**RSB-A888HS12T  
SORBY  
12PC MICRO  
TURNING SET**

WAS \$259.00

**NOW \$220.15**



**NEW 2019 PRO MODEL FROM SAWSTOP**

SST-JSS15-PRO  
**NEW SAWSTOP JOBSITE PRO SAW 2019 MODEL**

**\$2,299.00**

- New Deeper Table Size for Additional Support;
- New Hi-Lo T-Glide Style Fence System;
- New Active Dust Collection Guard Included



GET A FOLDING OUTFEED TABLE FOR JUST **\$220!**

BUY A PCS 1PH OR 3PH 36" T-GLIDE

SST-PCS36-KIT  
**PROFESSIONAL 36" SAW & FOLDING OUTFEED TABLE PACKAGE**

WAS \$5,608.00  
**NOW \$5,349.00**



GET THE CAST IRON WINGS FOR JUST **\$220!**

BUY A CNS 36" OR 52" T-GLIDE

SST-CNS36-KIT  
**CONTRACTOR 36" SAW & CAST IRON EXTENSION TABLES PACKAGE**

WAS \$3,578.00  
**NOW \$3,349.00**



BUY AN ICS 1 OR 3PH 52" T-GLIDE SYSTEM

GET THE LARGE SLIDING TABLE FOR JUST **\$1690!**

SST-ICS52-KIT  
**INDUSTRIAL 52" SAW & LARGE SLIDING TABLE PACKAGE**

WAS \$8,958.00  
**NOW \$8,249.00**



BUY A SAWSTOP PCS 52" T-GLIDE SYSTEM

GET THE SLIDING TABLE FOR JUST **\$1599!**

SST-PCS52-KIT  
**PROFESSIONAL 52" SAW & SLIDING TABLE PACKAGE**

WAS \$7,178.00  
**NOW \$6,799.00**



BUY A CNS WITH A 30" STANDARD FENCE SYSTEM

GET THE MOBILE CART FOR JUST **\$200!**

SST-CNS30STD-KIT  
**CONTRACTOR 30" STANDARD SAW & MOBILE CART PACKAGE**

WAS \$3,208.00  
**NOW \$2,999.00**



GET AN OVERHEAD FLOATING DUST GUARD FOR JUST **\$290!**

BUY AN ICS 1 OR 3PH 36" T-GLIDE

SST-ICS36-KIT  
**INDUSTRIAL 36" SAW & FLOATING OVERHEAD DUST GUARD PACKAGE**

WAS \$7,138.00  
**NOW \$6,689.00**



JET-JWBS20M  
JET 20"  
PROFESSIONAL  
BANDSAW

WAS \$3,999.00  
NOW \$3,499.00

JET AND POWERMATIC  
MACHINERY SALE

WHILE  
STOCKS  
LAST!



JET-JWBS18M  
JET 18" PROFESSIONAL  
BANDSAW

WAS \$3,199.00  
NOW \$2,799.00



PM-PJ882HH  
8" HELICAL HEAD JOINTER

WAS \$3,999.00  
NOW \$3,299.00



JET-JDP15B  
JET 15" BENCH TOP DRILL  
PRESS

\$1,199.00  
\$1,049.00



JET-JOSS-S  
JET WIDE DRUM SANDER  
18 / 36" WITH STAND

WAS \$2,199.00  
NOW \$1,999.00



PM-PM1900TX  
3HP DUST COLLECTOR

WAS \$2,199.00  
NOW \$1,999.00



JET-JBOS5  
JET BENCH TOP  
OSCILLATING SPINDLE  
SANDER

WAS \$599.00  
NOW \$499.00

# JAPANESE TOOLS

SAVE 15% ON  
JAPANESE TOOLS



1



2



3



4



5



6



7



8



9



10



11



12



13



14



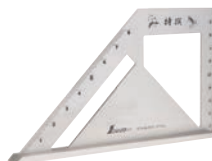
15



16



17



18



19



## MICROJIG

**MICROJIG'S  
INNOVATIVE  
SAFETY AVAILABLE  
FOR A LIMITED TIME  
AT 15% OFF**

1. **TRADITIONAL 6PC JAPANESE CHISEL SET**  
**\$288.15** JCS-6
2. **FRUIT AND FISH KNIFE**  
**\$43.35** 60343
3. **HEAVY VEGETABLE KNIFE**  
**\$50.15** 60242
4. **PARING KNIFE - 120MM**  
**\$36.51** JTM-801-553
5. **DEBA KNIFE - 155MM**  
**\$50.96** JTM-801-539
6. **JAPANESE SANTOKU KNIFE - 170MM**  
**\$80.71** JTM-801-713
7. **FISH/SASHIMI KNIFE - 210MM**  
**\$67.96** JTM-801-744
8. **SERRATED BREAD KNIFE**  
**\$67.96** JTM-3010
9. **JAPANESE DOZUKI SAW**  
**\$58.65** WDG-150
10. **JAPANESE DOZUKI SAW**  
**\$64.60** WDG-210
11. **JAPANESE DOZUKI SAW**  
**\$69.70** WDG-240
12. **JAPANESE RYOBA SAW**  
**\$92.65** WRG-240
13. **FOLDING CARPENTRY SAW**  
**\$34.81** CSF-265
14. **MICRO RAZOR SAW**  
**\$57.80** JSF-1
15. **JAPANESE MARKING KNIFE**  
**\$38.21** 2816-003
16. **JAPANESE CARVING KNIFE**  
**\$38.21** 2816-001
17. **TRY SQUARE**  
**\$37.36** 49N0502
18. **270MM NAIL PULLER**  
**\$38.21** JNP-270
19. **JAPANESE 9PC BEVEL EDGE CHISEL SET**  
**\$198.90** MBE-SET



MIC-TJ5000  
**MICROJIG MICRODIAL  
PREMIUM TAPER JIG**

WAS \$259.00

**NOW  
\$220.15**



MIC-DVC538K2  
**MICROJIG DOVETAIL  
CLAMPS - PACK OF 2**

WAS \$99.95

**NOW \$84.96**



MIC-DV-360ZPB1  
**MICROJIG ZEROPLAY  
360 SLED KIT**

WAS \$59.95

**NOW \$50.96**



MIC-DV-HK456X4  
**MICROJIG MATCHFIT  
DOVETAIL VARIETY PACK  
OF SIX FITTINGS**

WAS \$27.95

**NOW \$23.76**



MIC-GR200  
**MICROJIG ADVANCE  
GRR-RIPPER PUSH  
BLOCK**

WAS \$169.00

**NOW \$143.65**



MIC-GB1  
**MICROJIG GRR-RIP  
BLOCK PUSH BLOCK**

WAS \$64.95

**NOW \$55.21**

## BRIDGE CITY

SAVE 10% ON ALL BRIDGE CITY



BC-HP-9V2  
BRIDGE CITY DELUXE  
DUAL ANGLE BLOCK  
PLANE

WAS \$999.00  
**NOW \$899.10**



BC-HP-12  
BRIDGE CITY DELUXE  
DUAL ANGLE  
SMOOTHING PLANE

WAS \$1,399.00  
**NOW \$1,259.10**



BC-MT-1  
BRIDGE CITY  
SLIDING BEVEL  
MULTI TOOL LARGE

WAS \$209.00  
**NOW \$188.10**



BC-HP-8  
BRIDGE CITY HP-8  
MINI BLOCK PLANE

WAS \$229.00  
**NOW \$206.10**



BC-TS-2V2-M  
BRIDGE CITY TRY  
SQUARE METRIC TO  
200MM

WAS \$139.00  
**NOW \$125.10**



BC-MS-1V2  
BRIDGE CITY MITRE  
SQUARE

WAS \$149.00  
**NOW \$134.10**

## PAX

PAX-G8  
8" GENTS SAW 20TPI

WAS \$43.00  
**NOW \$36.55**



SAVE 15% ON PAX FINE  
QUALITY TRADITIONAL TOOLS



PAX-GS1  
GUITAR MAKERS  
FRET SAW

WAS \$49.00  
**NOW \$41.65**

PAX-T12  
PAX 12" TENON SAW  
13TPI CROSSCUT

WAS \$186.00  
**NOW \$158.10**



PAX-D8  
DOVETAIL SAW 20TPI  
CROSSCUT

WAS \$197.00  
**NOW \$167.45**



PAX-22  
HANDSAW 8TPI  
CROSSCUT

WAS \$186.00  
**NOW \$158.10**



CAN'T  
DECIDE?



GIFT CARDS ARE AVAILABLE TO PURCHASE  
IN-STORE, ONLINE AND OVER THE PHONE.

# FINISHING

SAVE 10% ON THESE FINISHING LINES

1. ORGANOIL DANISH OIL 1 LT  
\$44.10 ORG-DO-1LTR
2. ORGANOIL TUNG OIL - 1 LT  
\$39.60 ORG-TUNG-1LTR
3. ORGANOIL DECKING OIL 10 LT (CLEAR)  
\$197.10 ORG-DKG-10LTR
4. RIGID CAST- 2 PART - MAKES 6LT RESIN AND HARDENER  
\$264.56 ATL-RIGID-D
5. PERFECT COAT - 2 PART - MAKES 4LT RESIN AND HARDENER  
\$161.96 ATL-COAT-C
6. DEEP CAST- 2 PART - MAKES 3LT RESIN AND HARDENER  
\$152.96 ATL-DEEP-C
7. BLONDE DEWAXED SHELLAC 250GM FLAKES  
\$89.10 LBN-014685
8. FINISHING OIL 1LT  
\$62.10 LBN-003815
9. FINISHING OIL 500ML  
\$36.90 LBN-003819



# ROCKLER

10% OFF ALL ROCKLER



RK-46902  
**ROCKLER BENCH COOKIE PLUS**  
WAS \$25.95  
**NOW \$23.36**



RK-34913  
**ROCKLER CHROME PIZZA CUTTER TURNING KIT**  
WAS \$42.95  
**NOW \$38.66**



RK-59032  
**ROCKLER BOX JOINT JIG**  
WAS \$169.00  
**NOW \$152.10**



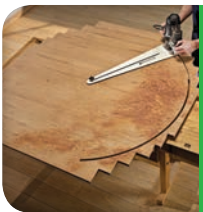
RK-52981  
**ROCKLER LATHE DUST COLLECTION SYSTEM**  
WAS \$129.00  
**NOW \$116.10**



RK-48212  
**ROCKLER DUSTRIGHT SMALL PORT STARTER KIT**  
WAS \$89.95  
**NOW \$80.96**



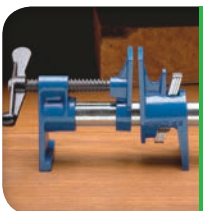
RK-54258  
**ROCKLER BANDY CLAMPS MEDIUM**  
WAS \$42.95  
**NOW \$38.66**



RK-40982  
**ROCKLER CIRCLE CUTTING ROUTER JIG**  
WAS \$99.95  
**NOW \$89.96**



RK-56094  
**ROCKLER OFFSET CENTRE MARKING TOOL**  
WAS \$21.95  
**NOW \$19.76**



RK-30921  
**ROCKLER SURE FOOT PIPE CLAMP**  
WAS \$42.95  
**NOW \$38.66**



RK-34302  
**ROCKLER F-STYLE CLAMP RACK**  
WAS \$42.95  
**NOW \$38.66**



# CHRISTMAS SALE

## Hurry! Only while stocks last!



**PARTICIPATING  
STORES**

**BRISBANE**  
128 Ingleston Rd  
Wakerley QLD 4154  
**(07) 3390 5888**

**MELBOURNE**  
80-82 Osborne Ave  
Springvale VIC 3171  
**(03) 8549 9999**

**PERTH**  
1/168 Balcatta Rd  
Balcatta WA 6021  
**(08) 6143 5788**

**SYDNEY**  
113 Station Rd  
Auburn NSW 2144  
**(02) 9648 6446**

**ADELAIDE**  
27 Magill Rd  
Stepney SA 5069  
**(08) 8362 9111**

**HOBART**  
17 Farley Street  
Glenorchy TAS 7010  
**(03) 6272 8881**

Specials and offers are available from 12 November until midnight 24 December 2019 via our online store at [www.carbatec.com.au](http://www.carbatec.com.au), via phone orders by calling **1800 658 111** or at the following participating stores only: BRISBANE, MELBOURNE, SYDNEY, ADELAIDE, HOBART, PERTH. Please note that stock ranges and availability vary from store to store and online. Discounts available only while stocks last - sorry, no back orders. Whilst we work to ensure information in this catalogue and our website is accurate and correct, occasionally, an error may occur and goods may either be incorrectly described or incorrectly priced.