

3M™ Reusable Half Masks 6500 & 6500QL series

Rugged, comfortable, low profile



The importance of fit

Respiratory protection is only effective if it is correctly selected, fitted and worn throughout the time when the wearer is exposed to respiratory contaminants. Before assigning any respirator to be worn in a contaminated area, it is recommended to perform a face fit check before entering. **These fitting instructions must be followed each time the respirator is worn.**

Donning your 6500 and 6500QL Reusable Half Masks



1 Adjust head cradle size as needed to fit comfortably on head. Place the mask over the mouth and nose with one hand, then pull the head harness over the crown of the head with the other hand.

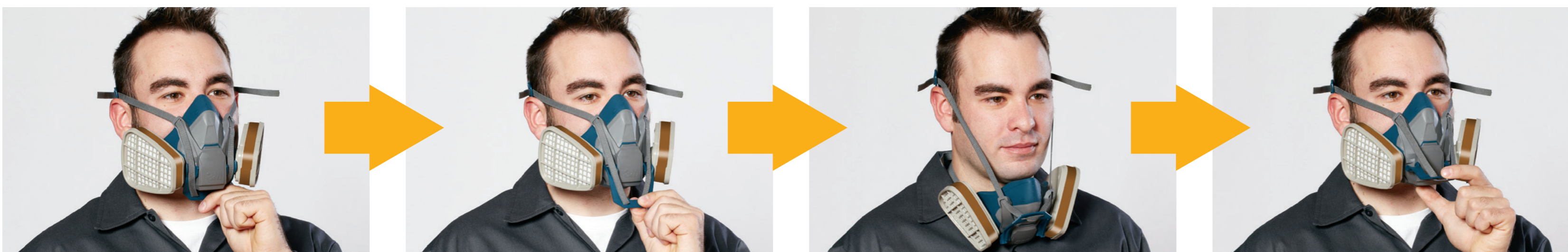


2 Grasp the bottom straps, place them at the back of the neck and hook them together.



3 Pull the ends of the straps to adjust the tightness, beginning with the adjustment points on the head cradle and then moving to the adjustment points at the back of the neck. Do not over-tighten. Strap tension may be decreased by pushing out on back side of buckles.

Using the 6500QL Quick Latch drop down feature



Quick latch closed

Pull up on latch

Quick latch open

Pull down on latch

To open quick latch: Grasp the latch at chin level and pull up. **To close quick latch:** Grasp the facepiece with your thumb on the bottom of the facepiece and your first two fingers on top of the latch. Place the facepiece over your nose and mouth while pushing down on the latch.

Important notice: After initial donning of the 6500QL Quick Latch Half Mask, subsequent donning can be done with quick latch initially in open or closed position. Always follow the User Instructions.

User fit checks: check the seal each time you don the respirator.



Positive pressure user seal check

Place the palm of your hand over the exhalation valve cover and exhale gently. The facepiece should bulge slightly. If air leaks between the face and the faceseal, reposition the respirator and/or adjust the straps for a more secure seal.



Negative pressure user seal check using 3M™ 2000 series filters

Place your thumbs on the center portion of the filters, restricting airflow through the filters, and inhale gently. The facepiece should collapse slightly closer to your face. If air leaks between the face and the faceseal, reposition the respirator and/or adjust the straps for a more secure seal.



Negative pressure user seal check using 3M™ 6000 series gas and vapour filters

Place the palms of your hands over the cartridges and inhale gently. The facepiece should collapse slightly closer to your face. If air leaks between the face and the faceseal, reposition the respirator and/or adjust the straps for a more secure seal.



Negative pressure user seal check using 3M™ 6000 series particulate filters

Squeeze filter covers with hands toward facepiece to restrict airflow. Be careful not to disturb the position of the respirator. Inhale gently. The facepiece should collapse slightly. If air leaks between the face and the faceseal, reposition it and adjust the straps for a tighter seal.

If you cannot achieve a proper seal, do not enter a contaminated area. See your supervisor.

Note: 3M does not accept liability of any kind, be it direct or consequential (including, but not limited to, loss of profits, business and/or goodwill) arising from reliance upon any information herein provided by 3M. The user is responsible for determining the suitability of the products for their intended use. Nothing in this statement will be deemed to exclude or restrict 3M's liability for death or personal injury arising from its negligence.

Warning: Respirators must not be used until your employer has determined whether usage will be in accordance with manufacturer's instructions. The wearer must be trained in the proper fitting and use of this product. Failure to follow all instructions and warnings on the use of this product and/or failure to wear this respirator during all times of exposure can reduce respirator effectiveness and result in illness or death. All respirators should be used in accordance with Australian Standard AS/NZS 1715. It is recommended that fit testing be conducted before assigning a respirator to an individual. If you cannot achieve a proper fit, do not enter contaminated areas. Do not use with beards or other facial hair or conditions that prevent a good seal between the face and the sealing surface of the respirator.