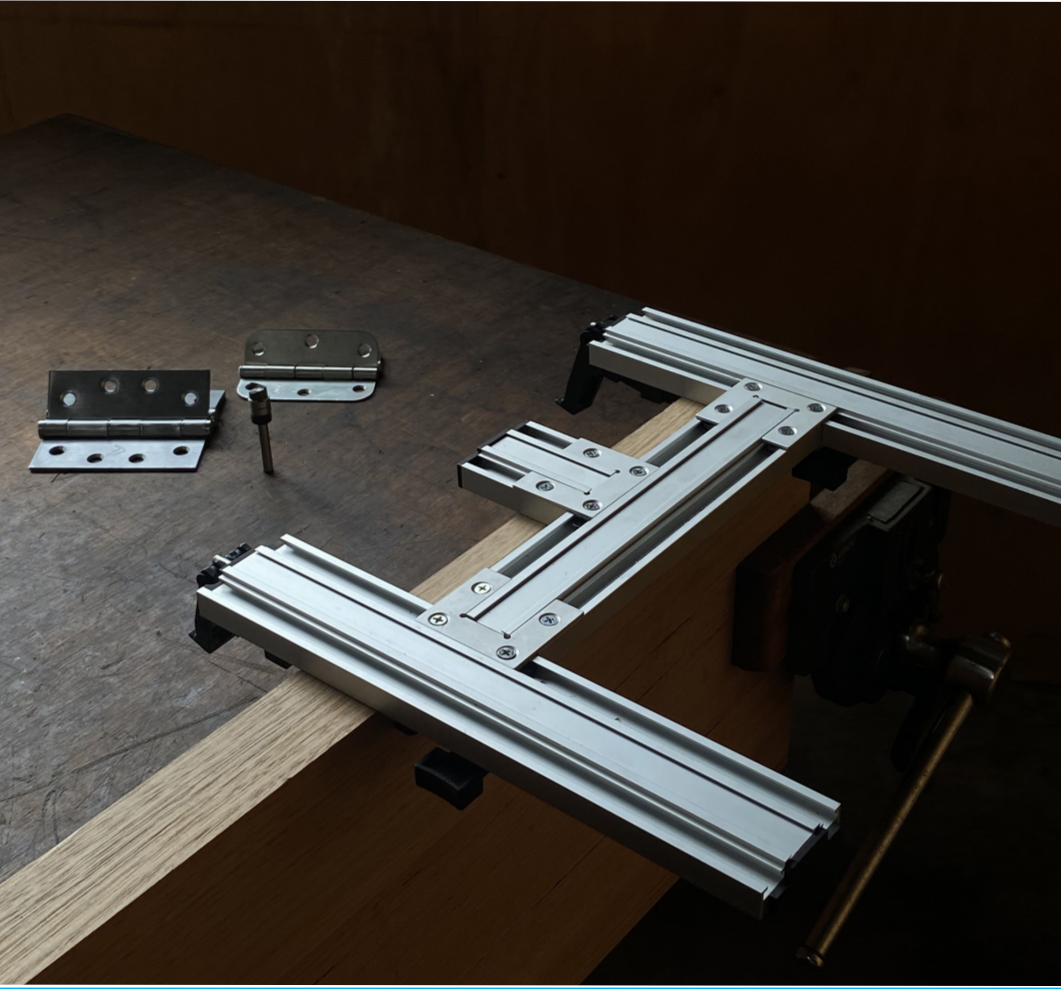


HINGE MORTISE JIG

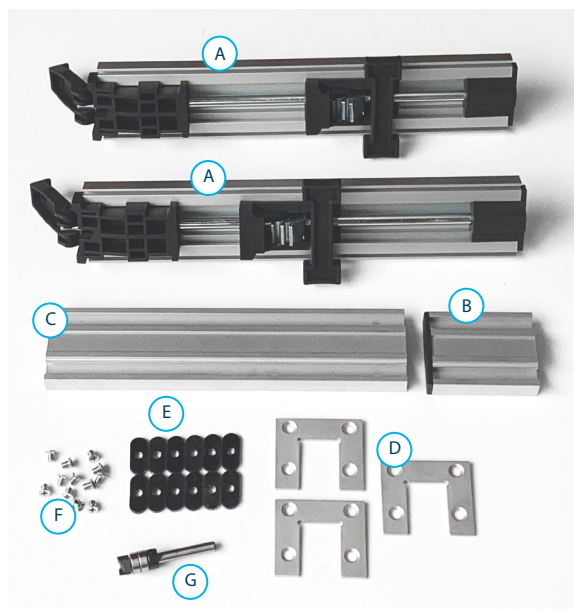
INSTRUCTIONS

carbatec®

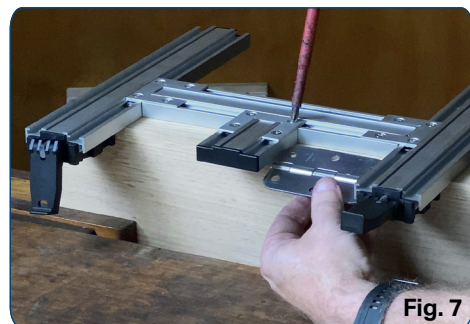
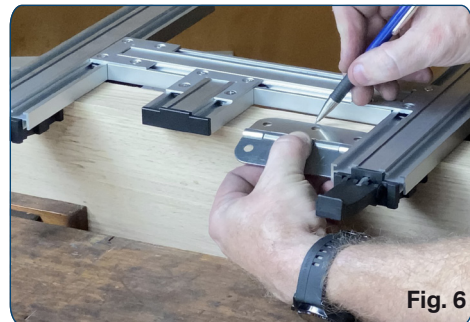
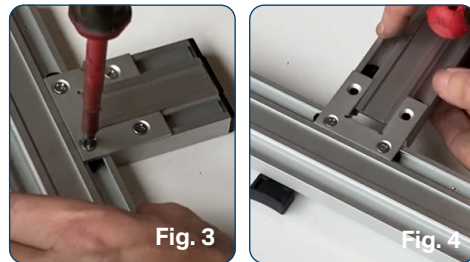
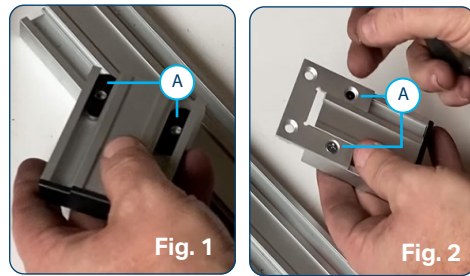


WHAT'S IN THE BOX:

- A. Side Clamp Rails
- B. Hinge Length Stop
- C. Hinge Back Stop
- D. Clamp Plates
- E. Flat Nuts
- F. Countersink screws
- G. 1/4" shank Router Bit
(Code: FM-78-BIT)



1. On the shortest alloy sections (Hinge Length Stop), insert 1x flat nut into each side of the track.
Fig. 1(A)
2. Attach 1x clamp plate (orient as shown) with 2x countersink screws and lightly tighten with a phillips head screwdriver
Fig. 2(A)
3. Slide 2x flat nuts into one side of the 240mm long mid rail (Hinge Back Stop), aligning opposite end of clamp plate over flat nuts and using 2x countersink screws, loosely tighten with screwdriver
Fig. 3
4. Slide 2x flat nuts into one side of the side clamping rail and attach mid rail assembly with 2x countersink screws.
Fig. 4
5. Repeat for opposite side clamping rail, checking that the clamp levers are facing the same way.
Fig. 5
6. Tighten all screws
(DO NOT OVER TIGHTEN)
7. When setting for hinge, clamp assembly to door in approximate position.
8. Manually mark the set back of the hinge using a pencil or scribe.
Fig. 6
9. Back off the 4x screws holding the Hinge Back Stop to Side Clamp Rails, slide & align back or inside of Hinge Back Stop to marked line and tighten screws.
10. Back off the 2x screws that retain the Hinge Length Stop and using the hinge, adjust to desired length and tighten screws.
Fig. 7



Additional notes: Bit cutting depth is adjust on your router/trimmer according to the manufacturers instructions. Ensure bit is set to account for depth of jig and hinge. To avoid damage to the jig, check that the router bit bearings (not the cutting edge) are in contact with the jig during use. Avoid lifting the bit when close to the jig guide edges. Replacement bit (FM-78-BIT) is available from Carbatec.