

Before operating the Power Chisel cont'd

- To remove the chisel press the locking button and remove.

Use Arbortech machine oil to regularly lubricate the cam. Squeeze a drop into the lubrication port **7** every 15 minutes of operation.

- Before plugging in, ensure that the on/off switch is in the OFF position.

9. Operating the Power Chisel.

Warning : Always wear correct safety clothing, including ear, eye and lung protection.

The Power Chisel should only be used with two hands, placing the left hand holding the chisel housing and the right hand holding the tool body in control of the switch. (as shown in fig.17)

- Use a maximum of 25° angle when removing wood. (see fig.18)
- Ensure the machine is running BEFORE contacting the material to be worked on.

NOTE : The Power Chisel will only work when the chisel **10 is engaged in the workpiece (this is when the chisel anvil (fig.2) comes in contact with the cam **5** .**

For detailed carving, the Power Chisel can be held as shown in fig.17

- Do not force the tool into the wood at steep angles.
- Do not use the chisels **10** as a lever to break out wood.

Warning : Always ensure that chisels are sharp! Blunt chisels will not cut and will wear the tool prematurely.

Warning : The chisel shaft becomes very hot during prolonged use. Only handle by the chisel blade.

Note : Do not cause motor speed to drop by forcing the chisel into the workpiece. This means you are using too much pressure.

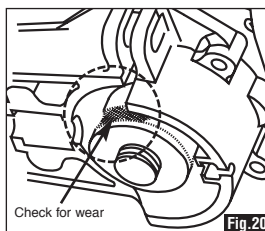
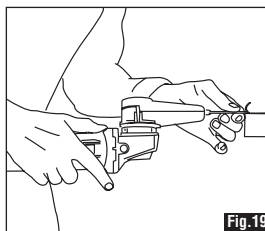
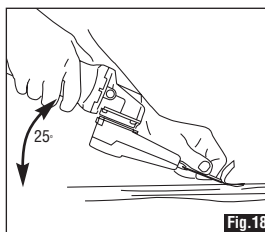
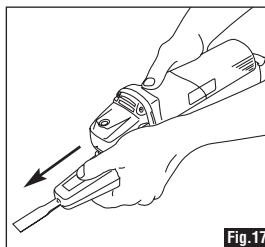
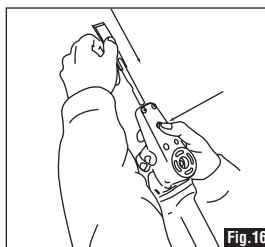
For fast rebates hold the Power Chisel upside down as seen in fig.19 Use only medium pressure. The stroke is delivered at constant power, speed and length, and will not cut faster by forcing the tool.

10. Maintenance

Note : Unplug the tool before carrying out any maintenance work.

Note : Ensure that the Power Chisel extension arm is always mounted securely. If loose, ensure that all screws are securely fitted.

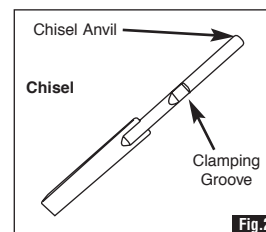
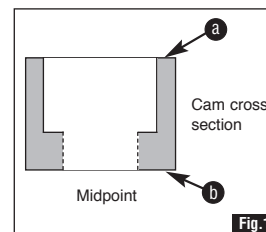
- Regularly check that the bushes **11** and springs **12** **13** are in sound condition. If worn, replace using an Arbortech Power Chisel service kit.
- Inspect the cam **5** for excessive wear. (fig.20). If wear is greater than 2mm deep replace using an Arbortech replacement cam.
- To clean, gently remove all grit & dust inside the extension arm **1** using a soft brush.
- Regularly check for dust or foreign matter in the grinder motor vents.
- The chisel anvil will wear after time. Replace chisels when the shaft has worn in excess of 5mm.



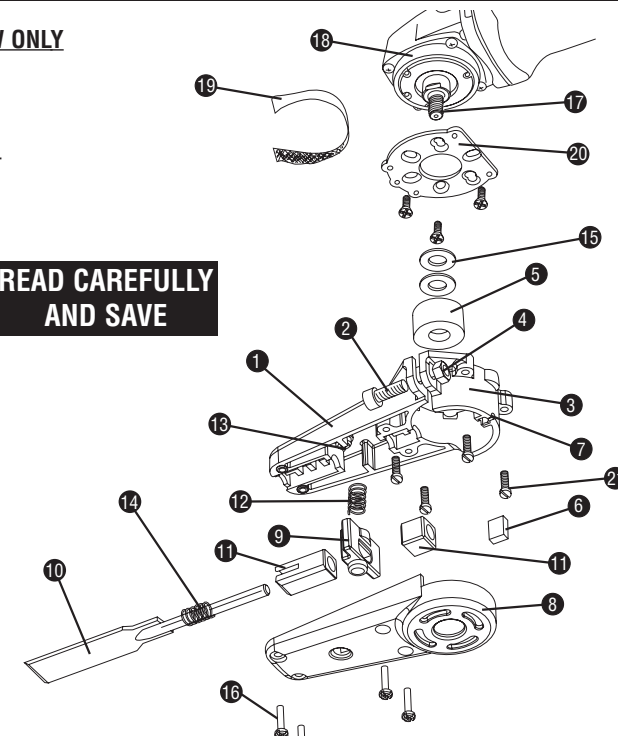
STANDARD PARTS KEY

THIS DIAGRAM IS AN OVERVIEW ONLY

- You will need:-
 Slotted screwdriver
 Medium Phillips head screwdriver
 Small adjustable spanner
 26mm (1") wrench or spanner



READ CAREFULLY AND SAVE



1. Power Chisel Extension Arm
2. Clamping Bolt
3. Clamping Nut
4. Adaptor Plate Screw Housing
5. Impact Cam
6. Felt Pad (Oil Reservoir)
7. Lubrication Port

8. Top Cover
9. Chisel Locking Button
10. Chisel
11. Bushes
12. Button Spring
13. Spring Locator
14. Chisel Holding Spring

15. Example Spacer Washer
16. Self Tapping Screws
17. Grinder Spindle
18. Grinder Collar
19. Emery Friction Strip
20. Adaptor Plate (MINO17)
21. Adaptor Plate Housing Screws
22. Countersunk Self Tapping Screws

Spacer Washers included in the following Power Chisel Kits:-

- PCH100**
 3 x M10 flat washers
 3 x M14 flat washers

- PCH101**
 3 x M10 flat washers

- PCH102**
 3 x M16 flat washers

- The chisels in this pack are extremely sharp and will become hot with prolonged use. Please use caution when handling chisels.
- All loose parts supplied in this kit must be removed from the Power Chisel arm before fitting onto the grinder.
- Always wear eye, ear and lung protection when using the Power Chisel.
- Continuous use of the Power Chisel may cause discomfort due to vibration. Rest regularly and wear gloves if problem persists.