



10 BANDSAW OWNER'S MANUAL

- Assembly
- Operating
- Repair parts

FOR YOUR SAFETY: READ ALL INSTRUCTIONS CAREFULLY

Contents

1.0 General	2.5 Safety Information
1.1 Specifications	2.6 Electrical Installation
1.2 User Responsibility/Warranty	3.0 Accessories
1.3 Final Assembly and Installation	3.1 Mitre Fence
2.0 Settings	4.0 Electrical Wiring Diagrams
2.1 Changing and Setting the Sawblade	5.0 Spare Parts List/Exploded View Drawing
2.2 Blade Guiding	
2.3 Setting the Cutting Height	
2.4 Saw Table Tilt	

1.0 General

1.1 Specifications

Dimensions (lxwxh)	800x330x420 mm
Weight with motor	33 kg
Table height from floor	368 mm
Throat width	245 mm
Max. cutting height	120 mm
Sawblade width	6-13 mm
Sawblade length	1790 mm
Sawtable size	290x290 mm
Sawtable tilt	0° - 45°
Sawblade speeds	700 m/min
Motor capacity	350 W

1.2 User Responsibility/Warranty

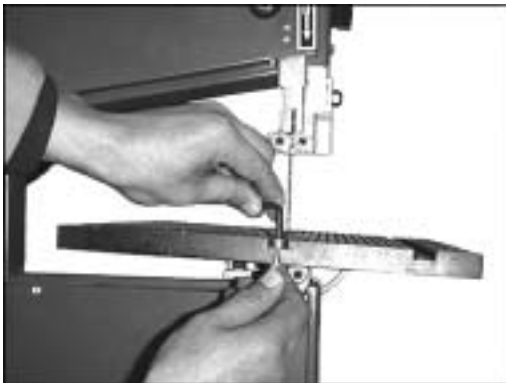
This appliance will perform in conformity with the description contained in the instructions provided. This machine must be checked periodically. Defective equipment (including power cables) should not be used. Parts that are broken, missing, obviously worn, distorted or contaminated, should be replaced immediately. Should such repair or replacement become necessary, it is recommended that only genuine replacement parts are used and that such repairs are carried out by qualified persons. This appliance or any of its parts should not be altered or changed from standard specifications. The user of this machine shall have the sole responsibility for any malfunction which results from improper use or unauthorized modification from standard specifications, faulty maintenance, damage or improper repair by anyone other than qualified person.

1.3 Final Assembly and Installation

Unpack machine and check for any visible damage which may have occurred during transport. If a damage is detected notify your dealer immediately.

This machine is shipped partly disassembled saw table, Mitre Fence and star knob have to be installed prior to use.

- Remove the wing nut and Hex. socket head cap screw the table.
- Place the table onto the upper table trunnion.
- Install to trunnion with 4 each serrated lock washer and hexagon head screw M6x12.
- Attach the wing nut and Hex. socket head cap screw to table with the wrench Hex.
- Place table insert into the table center hole (table insert with wide slot for bevel cuts only).
- Place the star knob into the hole on the frame



After installation adjust the table so that the sawblade runs through the center of the table insert's slot.

Centering the table

- Loosen the screws holding the lower table trunnion.
- Move table sideways as required, until sawblade runs through the center of table insert.



Setting the Table Square with the Sawblade

- The saw table can be tilted up to 45°. To tilt, loosen the wing nut of the table trunnion.
- Loosen the wing nut on the turnnion and adjust the table at 90°. with the blade.
- Check the table with a square to make sure the table is 90°. with the blade. If an adjustment is necessary, loosen the screw and adjust the pointer to 0°.



To ensure sufficient upright stability of the machine it should be bolted to floor, bench or table, or mounted on the Workstand BAS, available as optional accessory. For this purpose 4 - $\Phi 6.5$ mm holes are provided in the machine's base plate.



Dust Collection

The machine is fitted with a dust extracton port of 60mm diameter.

It is recommended that when in use, the machine is connected to a suitable dust extractor.

2.0 Band Saw Settings

2.1 Changing and Setting the Saw Blade

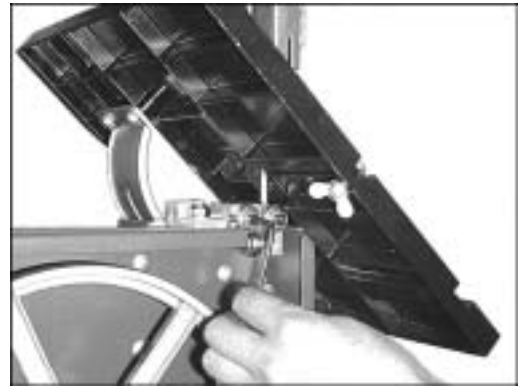
This band saw is factory-equipped with a general purpose wood cutting blade, the blade set. To change the blade, remove the wing nut and screw from the table. Then slacken the blade tension by turning the hand wheel on top of the upper wheel housing.

Fit new blade and tension lightly. The blade should run in the center of the rubber lined band saw wheels or else it may jump of. To check tracking, turn upper wheel by hand. If required, adjust tracking with the knurled handle at the rear of the upper wheel housing.



2.2 Blade Guiding

The saw blades guide of this band saw ensure an exact guiding of the blade for clean cuts. When using narrow blades ensure that the lower blade guide positively supports the blade from both sides and the rear. Set the



bearings of the upper blade guide to within approx. 0.5 mm of the blade, and the large thrust bearing against the back of the blade, just clear of it. Do not set the bearing too close, as the friction generates heat, which may have an adverse effect on the bearings and the saw blade as well.

2.3 Setting the Cutting Height

The upper blade guide should always be set as close as practical against the work. To adjust, loosen the wing nut at the side of the upper wheel housing, and set the blade guide to the required height. Tighten wing nut after setting.



2.4 Saw Table Tilt

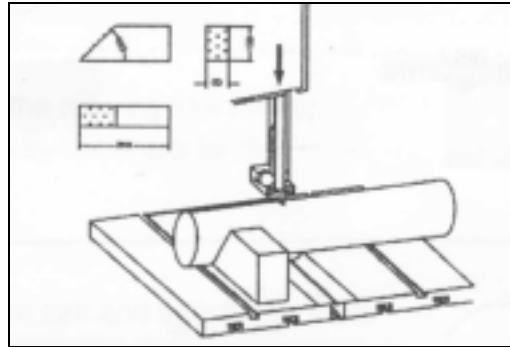
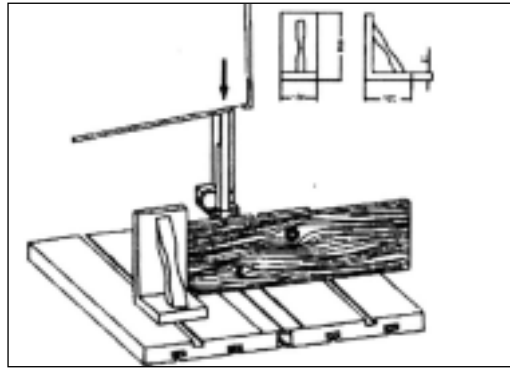
For bevel cuts the saw table tilts steplessly through 45°. To tilt, loosen the wing nut on the table trunnions, set table to the required angle and tighten the wing nut again.

It is recommended to verify the correct angle setting by making trial cuts in scrap wood.



2.5 Safety Information

1. Check that all guards are in place and securely locked before switching the machine on.
2. Always disconnect from power when servicing this machine.
3. Do not use bent or cracked band saw blades.
4. Replace table insert if slot has enlarged.
5. When cutting round stock use a suitable jig or fixture to keep the work from turning.
6. When cutting boards in an upright position use a suitable push block to prevent kickback.
7. Exchange the standard table insert against the one with the wide slot before tilting the table.
8. To keep health risk to a minimum it is recommended to always connect this band saw to a dust collector having an air flow rate of at least 20 m/s.



The most common hazards associated with the operation of band saws are the following:

- a hazard by the running saw blade, e.g. contact with the teeth of the blade.
- Flinging of cutoffs or knots.
- Work-piece kickback

The principal hazard areas of a band saw are:

- the work area
- the area around a running machine
- the kickback area

despite the use of the specific safety devices and compliance with all relevant regulations for the prevention of accidents, when operating a band saw the following residual risks remain:

- hearing damage by excessive noise
- danger of accidents in the unprotected cutting area of the running saw blade
- danger of injury when changing blades (danger of cuts by the sharp teeth)
- endangering by flung about workpieces or parts
- squashing of fingers
- danger of injury by kickback of workpieces
- health risk caused by the dust emission, especially from oak and beech saw dust.

2.6 Electrical Installation

This band saw is equipped with a 0.35 Kw 230V single-phase motor. Connect to a proper grounding type receptacle.

Have damaged power cables replaced at once by a qualified electrician. Risk of electric shock if operated with a damaged power cable.

Children should not operate this band saw.

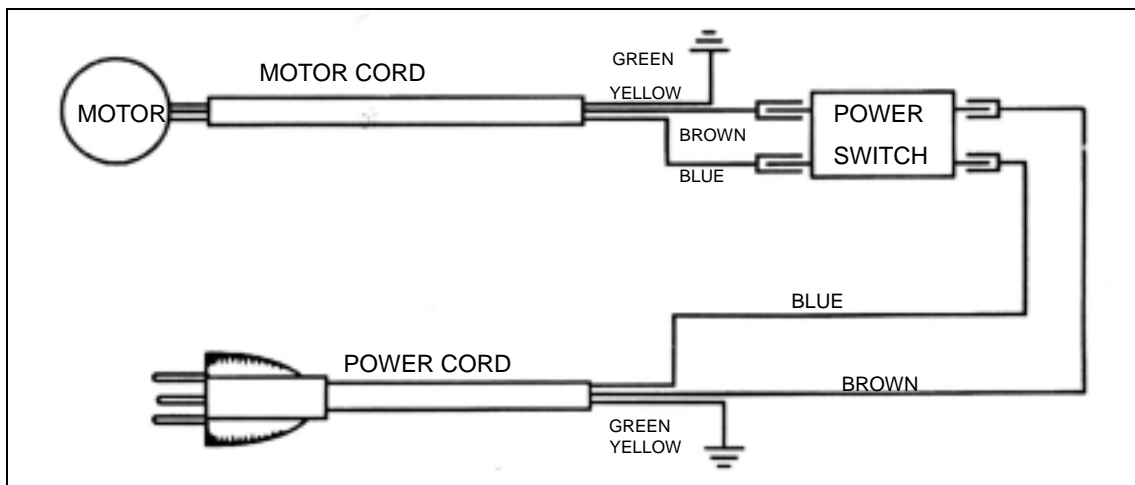
3.0 Accessories

3.1 Mitre Fence

Provides a Mitre Fence for angle cutting.

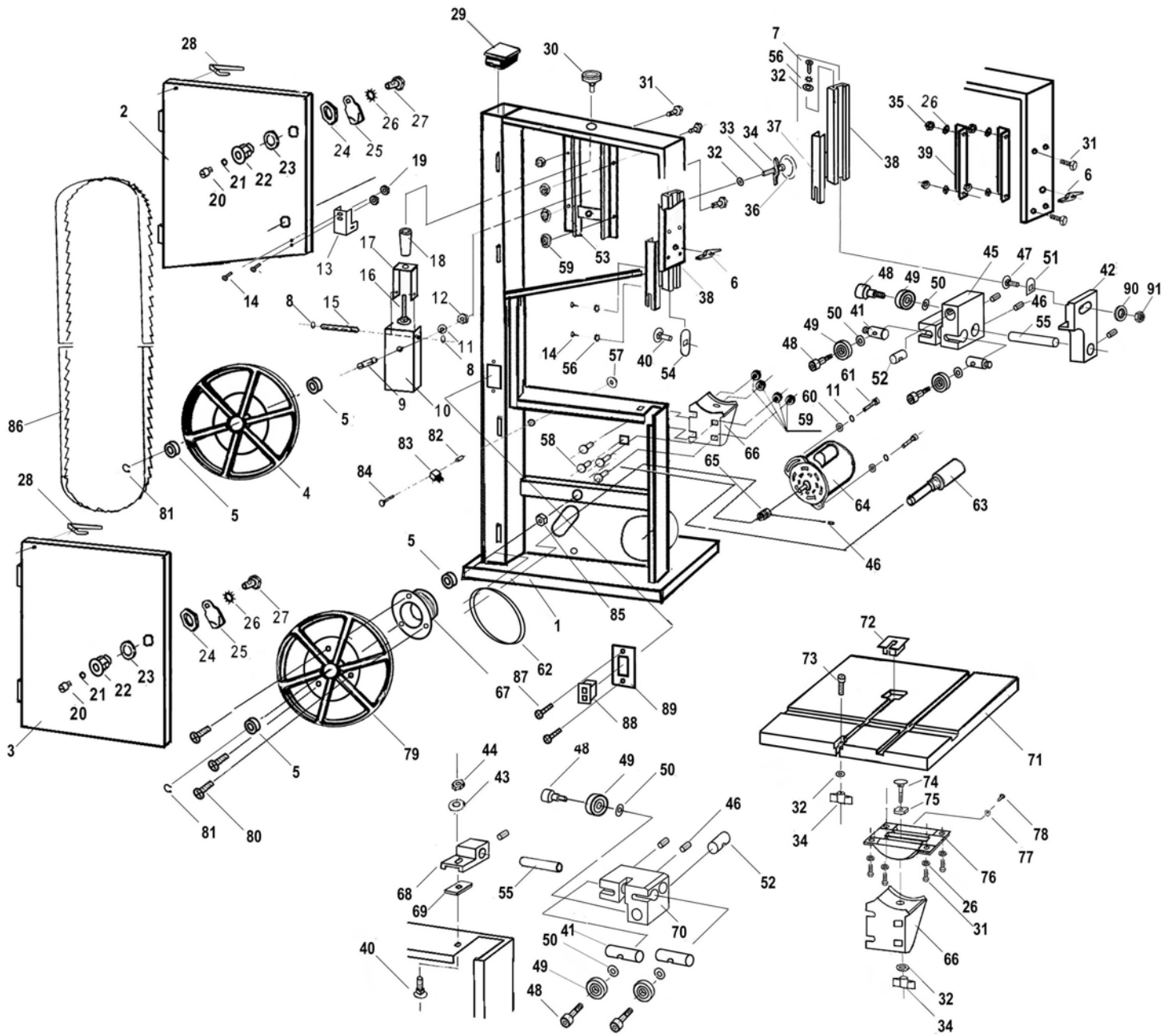


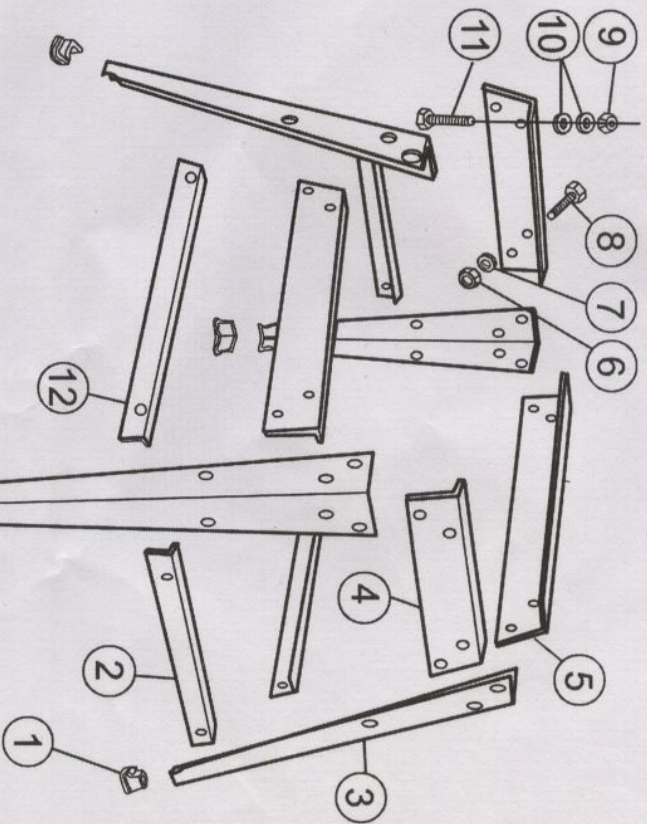
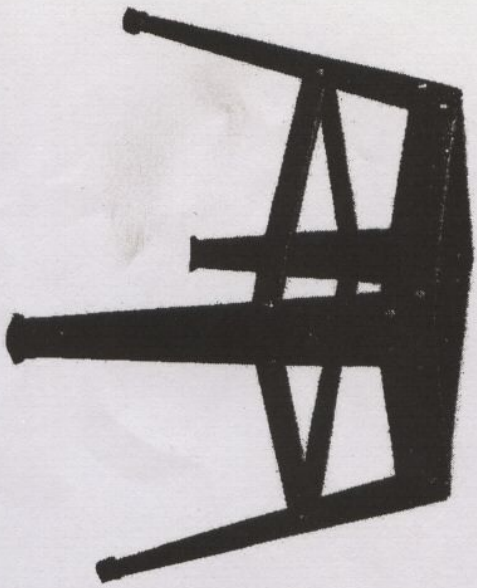
4.0 Wiring Diagrams



5.0 Spare parts list

Key No.	Description	Key No.	Description
1	Band saw frame	47	Carriage bolt
2	Door upper	48	Hexagon screw
3	Door lower	49	Bearing ball
4	Upper wheel	50	Washer
5	Bearing ball	51	Bolt guide
6	Wing nut	52	Mount shaft
7	Pan head tapping screw	53	Tension angle
8	Star lock cap	54	Bolt guide
9	Bearing bolt upper	55	Lower guide shaft
10	Wheel carrier bracket	56	Lockwasher extend
11	Spring washer	57	Hex. nut with flange
12	Hex. nut	58	Carriage bolt
13	U-mount	59	Hex. nut with flange
14	Pan head screw	60	Washer
15	Shaft mount	61	Hex. socket head cap screw
16	Carriage bolt	62	J-belt
17	Blade tensioner	63	Bearing bolt lower
18	Blind rivet nut	64	Motor
19	Preruling torque type hex nut	65	Motor pulley
20	Slotted insert	66	Table trunnion lower
21	Spring washer	67	Wheel pulley
22	Housing	68	Lower guide mount
23	Washer	69	Pin guide seat
24	Hex. nut	70	Lower guide body
25	Tongue	71	Table
26	Lockwasher extend	72	Table insert
27	Hex. screw	73	Hex. socket head cap screw
28	Leaf spring	74	Carriage bolt
29	Lamello plug black	75	Glide piece
30	Star knob	76	Table trunnion upper
31	Hex. screw	77	Scale
32	Washer	78	Pan head tapping screw
33	Hex. screw	79	Lower wheel
34	Wing nut	80	Pan head cross screw
35	Hex. nut	81	Ring-retaining
36	Knurled thumb screw	82	Spacer bushing
37	Blade guard	83	Brush strip
38	Roller guide carrier extrusion	84	Carriage bolt
39	Guide angle	85	Hex. nut
40	Carriage bolt	86	Blade
41	Adjusting shaft	87	Pan head cross screw
42	Upper guide mount	88	Lock switch
43	Washer	89	Cover-switch plate
44	Preruling torque type hex nut	90	Washer
45	3-roller guide ass'y	91	Hex. nut
46	Screw socket set		





ITEM NO.	DESCRIPTION	QTY
1	Rubber Foot	4
2	Side Beam	2
3	Legs	4
4	Side Panel	2
5	Front Panel	2
6	Hex Nut M8	24

ITEM NO.	DESCRIPTION	QTY
7	Washer 8mm	24
8	Hex Head Screw M8x16	24
9	Hex Nut M6	8
10	Washer 6mm	8
11	Hex Head Screw M6x35	4
12	Front Beam	2