

OPERATION MANUAL

17 INCH WOODWORKING BAND SAW

**FOR YOUR
SAFETY**
READ ALL
INSTRUCTIONS
CAREFULLY

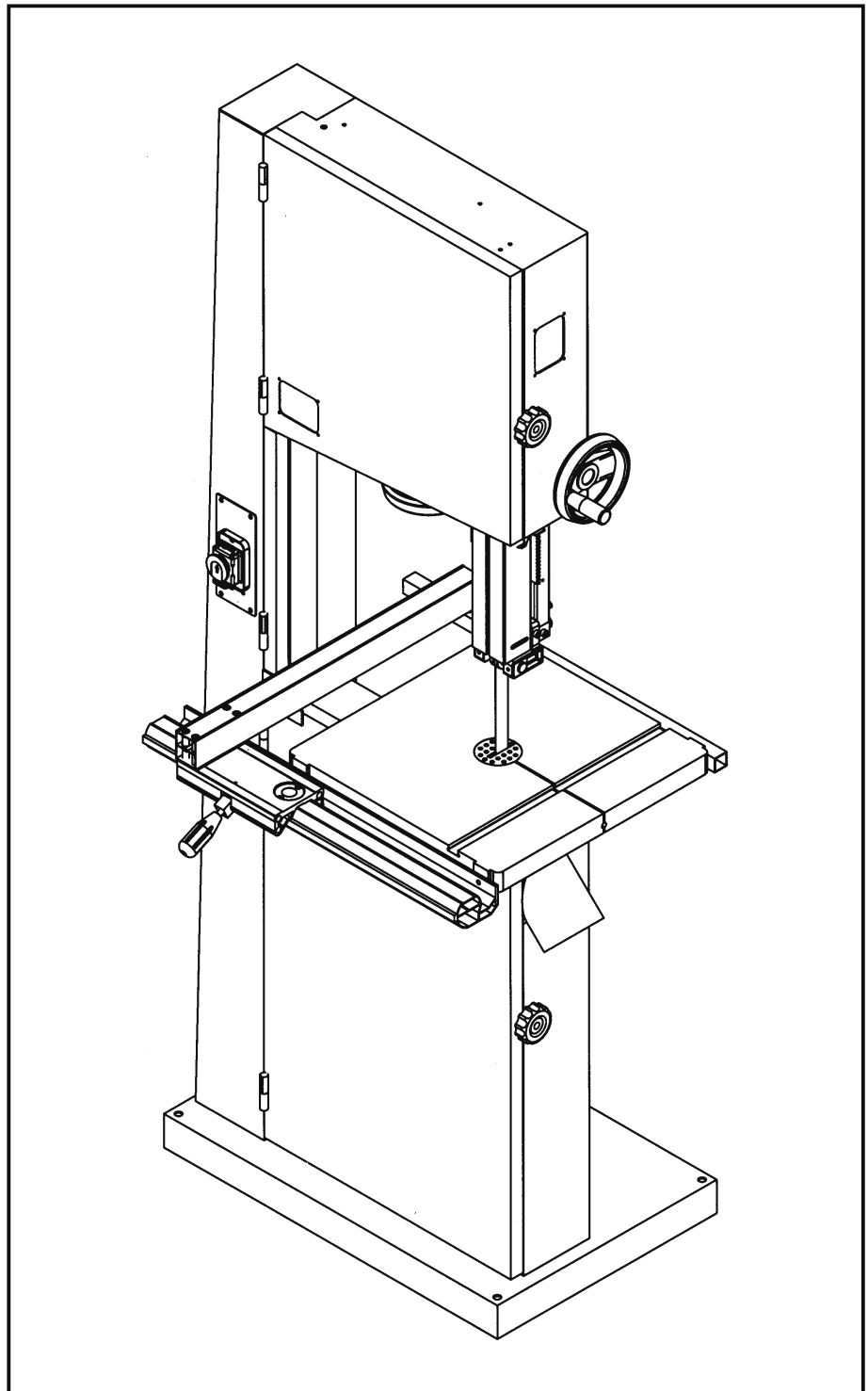


TABLE OF CONTENTS:

Section	Page
General Specification/Wiring Diagrams.....	1
Operation Warnings.....	2
Safety Instructions for Operation.....	3
Parts list Band Saw (Front).....	4
Parts list Band Saw (Rear).....	5
Operating Instructions.....	6
Moving.....	6
Assemble The Machine.....	6
Adjusting 90 degree Table Stop.....	6
Rip Fence.....	6
Blades changing.....	7
Adjusting Upper Blade Guide Assembly.....	7
Adjusting the Speed of Saw Blade.....	8
Adjusting the Tension of the Blade.....	8
Dust Collection.....	8
Setting the cutting height.....	8
Miter Gauge Adjustment.....	9
Safety Device	9
Steps for the table parallel adjustment	10

GENERAL INFORMATION:

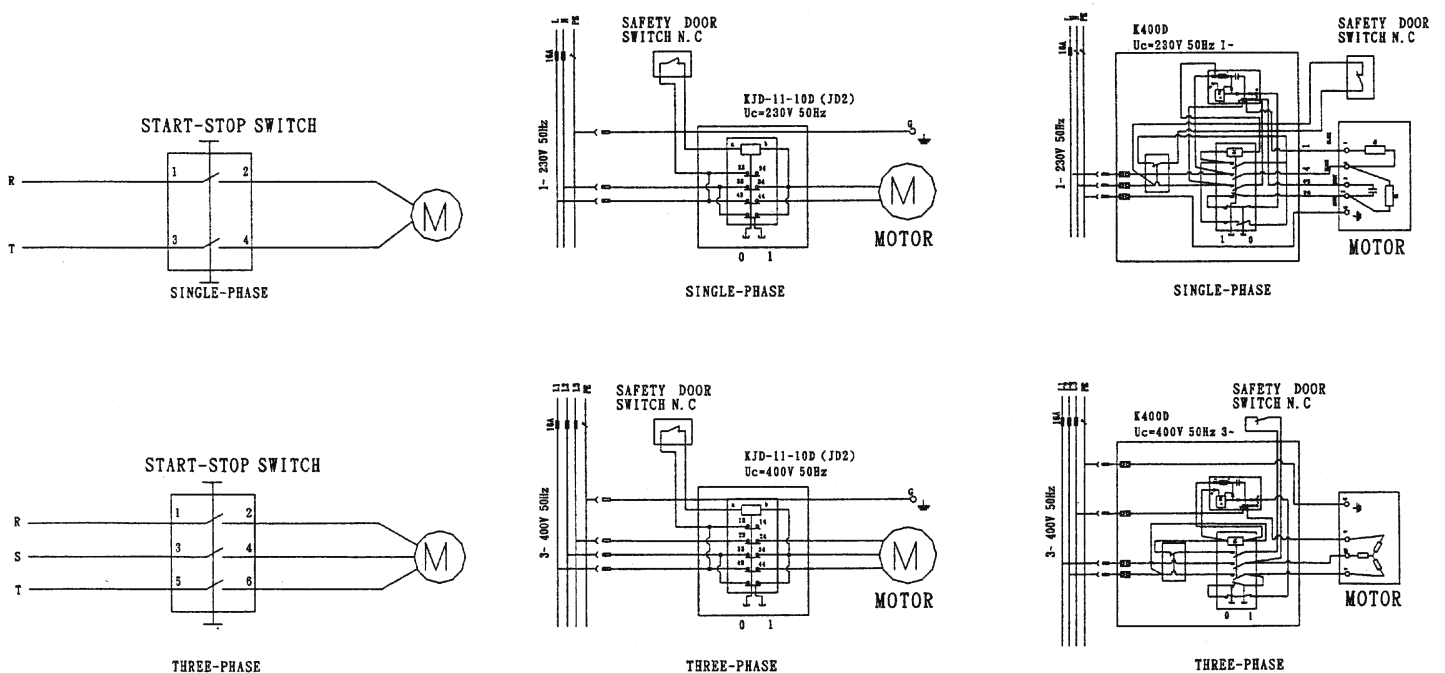
The 17"(430mm) band saw is a well designed industrial machine that provide variety of wood working functions to meet your higher needs of a Band Saw. Followings are the basic functions you will find in this machine:

1. *Quick Changed Saw Blade system* given you an easy way to replace saw blade to cut different quality wood materials.
2. *Adjustable Rip Fence* can assist you to cut desired shapes.
3. *Accurate Miter Gauge* can let you create any curves you desire.
4. *Effective Ball Bearing Guide System* will let the band saw blade run more smoother.
5. *Humanized Dust Chutes* collect extra wood-chips, and give you a better working environment.
6. *Extended 12" Height Space* provides you a bigger working space to cut wider and higher wood selections.

1. General Specifications

Horse Power	1.5HP or 2HP
Apperance	32" x 26" x 74"
Cutting Height	12"(300mm)
Max. Cutting Width	16-1/4"(410mm)
Max. Cutting (Rip Fence)	14-5/8"(370mm)
Saw Blade (L)	131.7"/3353mm
Saw Blade (W)	1/8" to 1" (Standard 1/2")
CE Saw Blade Speed, Saw Blade Speed	(850, 430m/min)(3300,1600SFPM)
Table Size	17" x 17"(430x430mm)
Table Tilting	Left-10" / Right-45"
Wheel Size	17"(430mm)
Table Height From Ground	37.5"(950mm)
Dust Chute Diameter	D4" x 2
N.W/Cut	121 / 157kgs
Packing Size (LxWxH)	30" x 20" x 27"(28')

WIRING DIAGRAMS:



2. WARNINGS



WARNING

- Misuse of this machine can cause serious injury.
- For safety, machine must be set up, used and serviced properly.
- Read, understand and follow instructions in the operator's and parts manual which was shipped with your machine.

When setting up machine:

- Always avoid using machine in damp or poorly lighted work areas.
- Always be sure machine is securely anchored to the floor.
- Always keep machine guards in place.
- Always put start switch in "OFF" position before plugging in machine.

When using Machine:

- Never operate with machine guards missing.
- Always wear safety glasses with side shields (See ANSI Z87.1)
- Never wear loose clothing or jewelry.
- Never overreach - you may slip and fall into the machine.

- Never leave machine running while you are away from it.
- Always shut off the machine when not in use. When servicing machine:
- Always unplug machine from electrical power while servicing.
- Always follow instructions in operators and parts manual when changing accessory tools or parts.
- Never modify the machine without consulting Wilton Corporation.

You- the stationary power tool user - hold the key to safety.

Read and follow these simple rules for best results and full benefits from your machine. Used properly, Wilson's machine is among the best in design and safety. However, any machine used improperly can be rendered inefficient and unsafe. It is absolutely mandatory that those who use our products be properly trained in how to use them correctly. They should read and understand the Operators and Parts Manual as well as all labels affixed to the machine. Failure in following one of these warnings can cause serious injuries.

Machinery general safety warnings

1. Always wear protective eye wear when operating machinery. Eye wear shall be impact resistant, protective safety glasses with side shields which comply with ANSI Z87.1 specifications. Use of eye wear which does not comply with ANSI Z87.1 specifications could result in severe injury from breakage of eye protection.
2. Wear proper apparel. No loose clothing or jewelry which can get caught in moving parts. Rubber soled footwear is recommended for best footing.
3. Do not overreach. Failure to maintain proper working position can cause you to fall into the machine or cause your clothing to get caught-pulling you into the machine.
4. Keep guards in place and in proper working order. Do not operate the machine with guards removed.
5. Avoid dangerous working environments. Do not use stationary machine tools in wet or damp locations. Keep work areas clean and well lit. Special electrics should be used when working on flammable materials.
6. Avoid accidental starts by being sure the start switch is "OFF" before plugging in the machine.
7. Never leave the machine running while unattended. Machine shall be shut off whenever it is not in operation.
8. Disconnect electrical power before servicing. Whenever changing accessories or general maintenance is done on the machine, electrical power to the machine must be disconnected before work is done.
9. Maintain all machine tools with care. Follow all maintenance instructions for lubricating and the changing of accessories. No attempt shall be made to modify or have makeshift repairs done to the machine. This not only voids the warranty but also renders the machine unsafe.
10. Machinery must be anchored to the floor.
11. Secure work. Use clamps or a vise to hold work, when practical. It is safer than using your hands and it frees both hands to operate the machine.
12. Never brush away chips while the machine is in operation.
13. Keep work area clean. Cluttered areas invite accidents.
14. Remove adjusting keys and wrenches before turning machine on.
15. Use the right tool. Don't force a tool or attachment to do a job it was not designed for.
16. Use only recommended accessories and follow manufacturers instructions pertaining to them.
17. Keep hands in sight and clear of all moving parts and cutting surfaces.
18. All visitors should be kept at a safe distance from the work area. Make workshop completely safe by using padlocks, master switches, or by removing starter keys.
19. Know the tool you are using- its application limitations, and potential hazards.

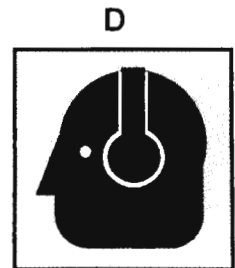
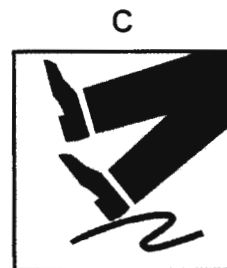
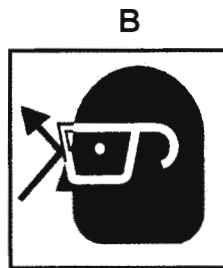
Safe by using padlocks, master switches, or by removing starter keys.

General Electrical Cautions

This saw should be grounded in accordance with the National Electrical Code and local codes and ordinances. This work should be done by a qualified electrician. The saw should be grounded to protect the user from electrical shock.

3. SAFETY INSTRUCTIONS

1. Always wear leather gloves when handling saw blade. The operator shall not wear gloves when operating the machine.
2. All doors shall be closed, all panels replaced, and other safety guards in place prior to the machine being started or operated.
3. Be sure that the blades is not n contact with the workpiece when the motor is started. The motor shall be started and you should allow the saw to come up to full speed before bringing the saw blade into contact with the workpiece.
4. Keep hands away from the blade area. **See Figure A.**
5. Remove any cut off piece carefully while keeping your hands free of the blade area.
6. Saw must be stopped and electrical supply must be cut off before any blade replacement or adjustment of blade support mechanism is done, or before any attempt is made to change the drive belts or before any periodic service or maintenance is performed on the saw.
7. Remove loose performed on the unnecessary workpieces from area before starting machine.
8. Bring adjustable saw guides and guards as close as possible to the workpiece.
9. Always wear protective eye wear when operating, servicing, or adjusting machinery. Eyewear shall be impact resistant, protective safety glasses with side shields complying with ANSI Z787. 1specifications. Use of eye wear which does not comply with ANSI87. 1 specifications could result in severe injury from breakage of eye protection. **See Figure B.**
- 10.Nonslip footwear and safety shoes are recommended. **See Figure C.**
- 11.Wear ear protectors (plugs or muffs) during extended periods of operation. **See Figure D.**
- 12.The workpiece, or part being sawed, must be securely clamped before the saw blade enters the workpiece.
- 13.Remove cut off pieces carefully, keeping hands away from saw blade.
- 14.Saw must be stopped and electrical supply cut off or machine unplugged before reaching into cutting area.
- 15.Avoid contact with coolant, especially guarding your eyes.

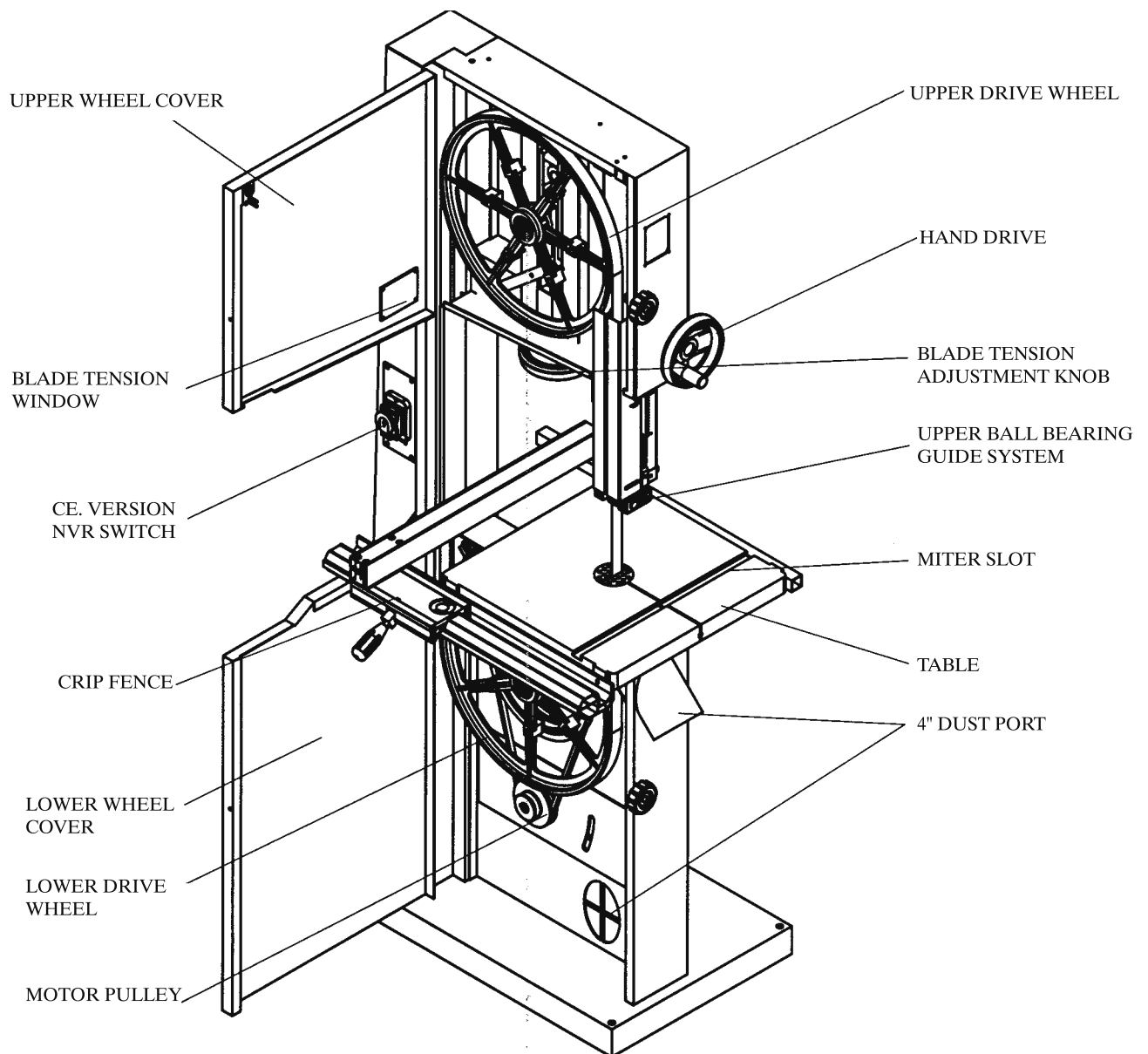


SAW NOMENCLATURE

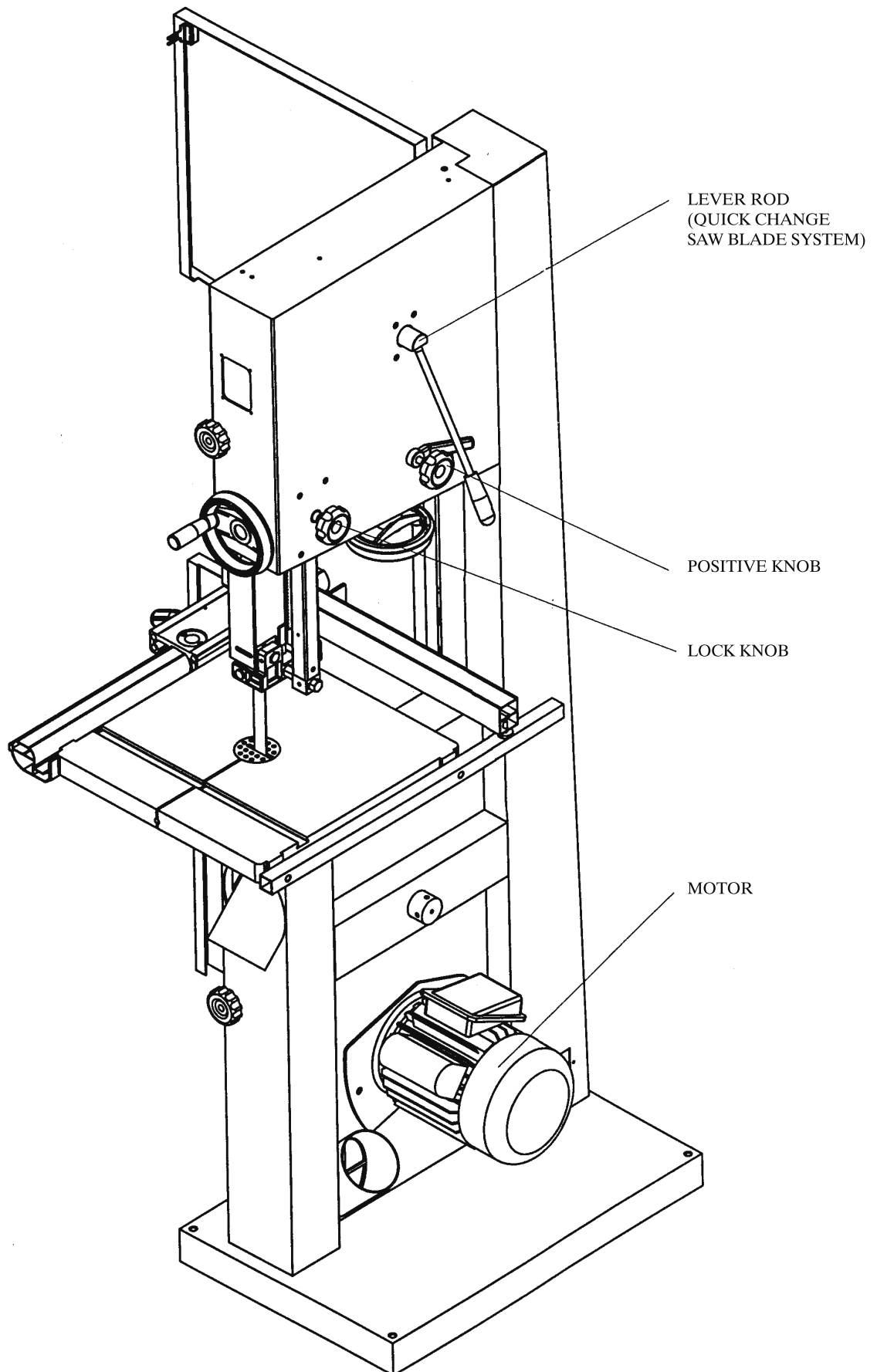
Throughout this document, we make reference to various systems and components on the saw. The two illustrations on these pages will provide you with an overall frame of reference for the location and position of the various components.

Where detailed illustrations for various subsystems will be helpful, you will find these illustrations accompanying the specific test for each subsystem and its components.

FRONT SIDE OF BAND SAW



REAR OF BAND SAW



5. OPERATING INSTRUCTION

MOVING

- Use a 2000kgs wrecker hang up the machine on parts A (Fig. 1) to suitable space.
- To ensure sufficient upright stability of the machine and safety, you need to bolt the machine to floor on M10 screw.

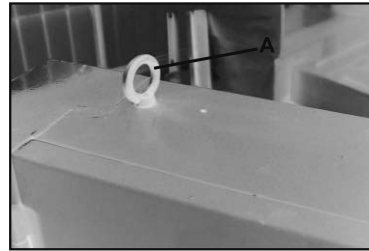


Fig. 1

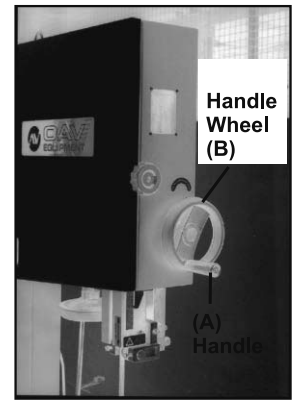


Fig. 2

ASSEMBLE THE MACHINE:

- Attach the handle (A, Fig. 2) to the hand wheel (B, Fig. 2), lock the screw then connect to the machine.
- To mount table, remove table insert and table pin from the table. Slide the table slot to the saw blade, slow moving to the center to table, make sure the table is located to the m8 hole (4 hole) and attach the spring washer, (Fig. 3) then replace table insert and table pin.
- Adjust the table until the saw blade in the center of table insert, then locked with screw.



Fig. 3

ADJUSTING 90 DEGREE TABLE STOP

- Unplug power cord.
- Loosen the lock knobs (A, Fig. 4) and tilting table left until it rests against table stop bolt M8.(A, Fig. 5)
- Use a protractor placed on the table and against the blade,(A, Fig. 6) to see if the table is 90 degree to the blade.
- If it is not 90 degree, you can use micro-adjust knob, please lock the lock knob

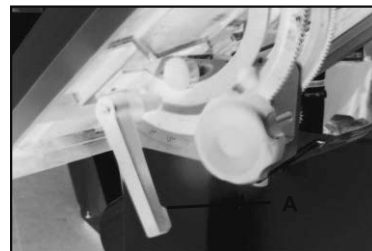


Fig. 4

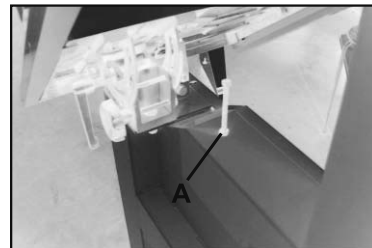


Fig. 5

TILTING THE TABLE

WARNING !

Unplug the machine from the power source before making any repair or adjustment !
Failure to comply may caused serious injury !

- Tilt table up to 45 degrees to the right or up to 10 degrees to the left.
* Optional with extension table can only adjust to 5 degrees.*

RIP FENCE

- Setting the fixed base(A, Fig. 7) to the cast iron table with two hex head bolt m6x20, two spring washer m6.
- Setting the square tube (B, Fig. 7) to the table with 2 hex socket bolt m6x16.
- Setting the fence (A, Fig. 7) to the fence body, place the fence assembly on the fixed base, slide the fence on its guides until it is the required distance from the blade.
- Check the scale, make sure the distance between the edge of the miter slot and both the front and rear of the rip fence, adjust so both distances are equal.
- Lock the fence by pushing the locking handle.

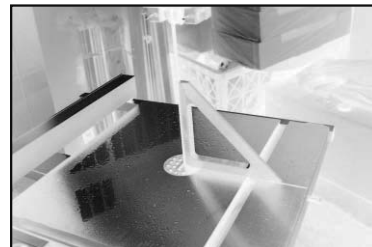


Fig. 6

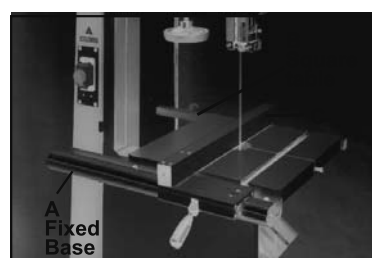


Fig. 7

BLADES CHANGING

1. Unplug power cord.
2. Remove the table insert and table pin.
3. Open upper & lower wheel cover.
4. Loosen the upper & lower blade guide system and bearing.
5. Loosen lever rod the knob (quick change saw blade system) on rear of band saw. (A, Fig. 8)
6. Remove the table to direct through slot in table.

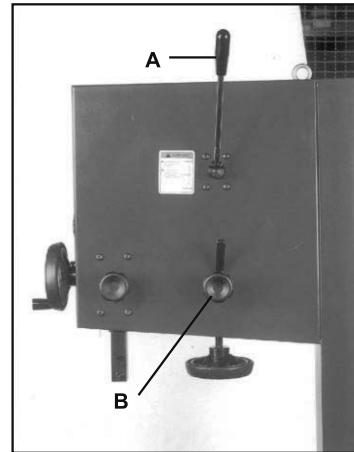


Fig. 8

Attention : the direction of new saw blade must be:



7. Guide new blade through table slot, place blade in upper and lower ball bearing guide system.
8. Replace blade in the middle of the upper and lower wheel, if the saw blade is not in the right position, you must relax the fixed handle and adjust the positive knob. (B, Fig. 8)
9. Replace the table insert and table pin.
10. Adjust the blade tension and blade tacking if the blade width is different.

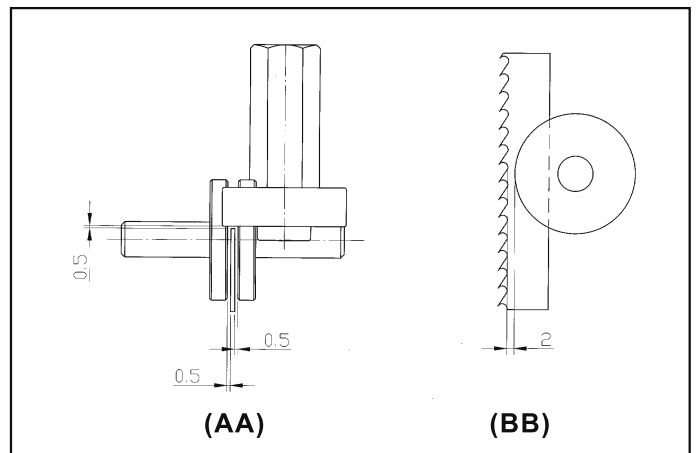


Fig. 9

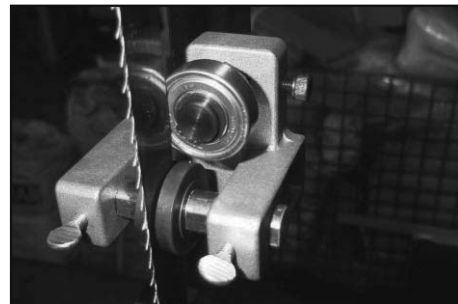


Fig. 10



Fig. 11

ADJUSTING UPPER BLADE GUIDE ASSEMBLY

1. Set the bearing of upper & lower blade guide to within approx. 0.5mm of the blade, make sure the bearing the back of the blade approx. 0.5mm. (Fig.10,11) see follow instruction.(AA,BB)
2. Do not set the bearing too close, as the friction generates heat, which may have an adverse effect on the bearings and the saw blade as well.

ADJUSTING THE SPEED OF SAW BLADE

1. Loosen the two screw (A, B, Fig. 12), change the belt to the belt to the required belt solt.
2. Until the saw blade speed to 850m/min or 430m/min (3300SFPM, 1600SFPM)
3. Locked the two screw.

ADJUSTING THE TENSION OF THE BLADE

Blade tension is set by a spring loaded tension mechanism on the upper drive wheel. Check the level of the tension device before cutting. The tension for various blade widths as indicated on the window of upper wheel cover.

Turn the blade tension hand wheel (A, Fig. 13) and see the saw tension instruction (A, Fig. 14) indicated on the window of upper wheel cover.

DUST COLLECTION

The band saw is recommended to connected to dust collect, there are two 4" dust port (A, Fig. 15) to attach with 4" steel clamping.

SETTING THE CUTTING HEIGHT

The upper blade guide should always be set as closes practical against the work. To adjust, loosen the hand wheel (A, Fig. 2) at the side of housing and see the blade guide to the required height then tighten after setting.

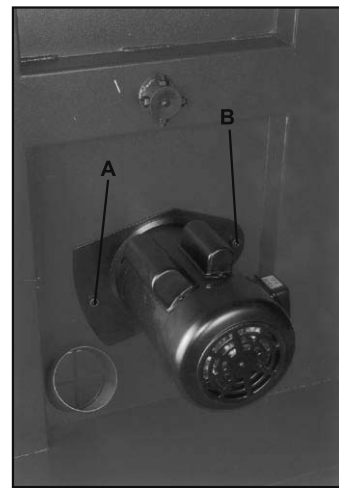


Fig. 12

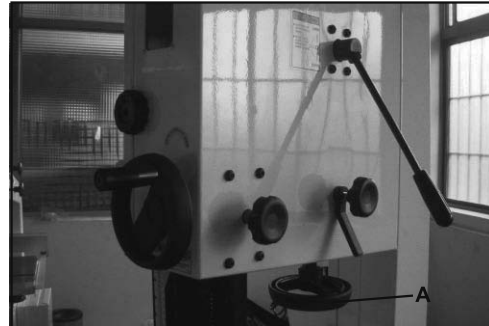


Fig. 13

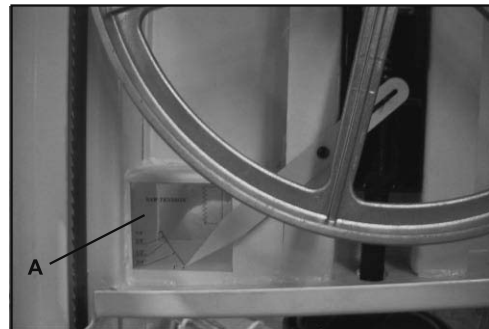


Fig. 14

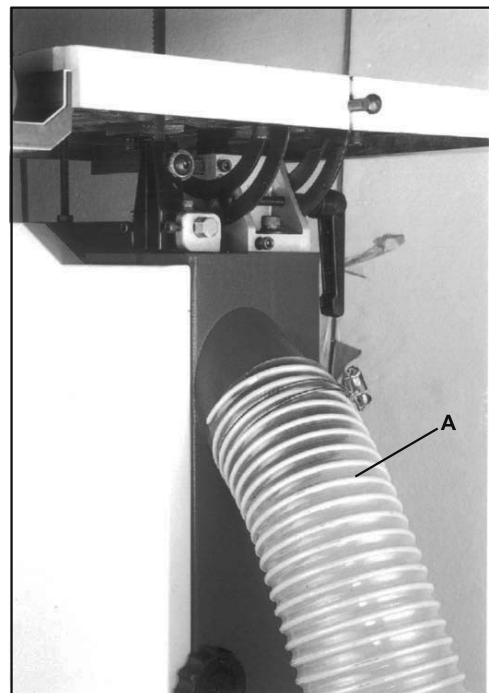


Fig. 15

MITER GAUGE ADJUSTMENT (optional)

1. Place the miter gauge in the table slot.
2. Loosen the clamp screw on the miter gauge.
3. Adjust to the desired angle of cutting on miter gauge.
4. Tighten the clamp screw (Fig. 16).

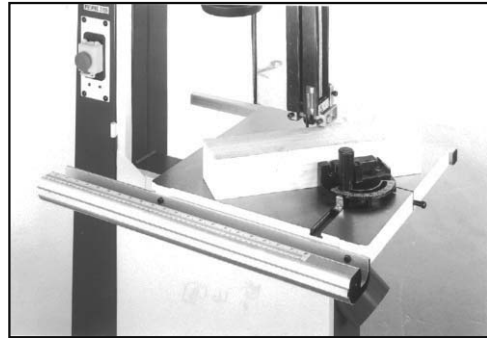


Fig. 16

SAFETY DEVICE

Limit switch(A, Fig. 17) inside the machine body for cutting off the power while door opening during operation.

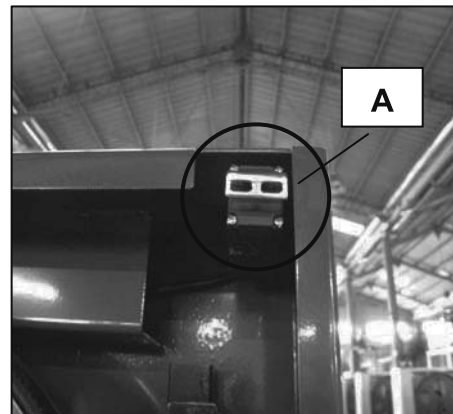


Fig.17

Added door lock (A, Fig. 18) to link upper and lower door in between. To prevent the door been suddnely open during operation.



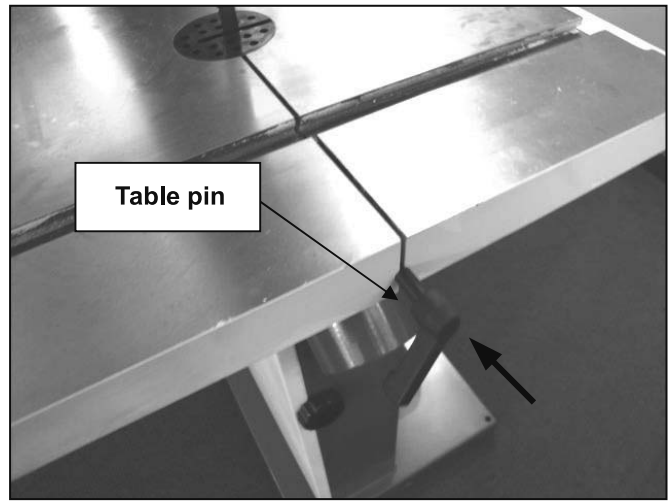
Fig.18

Steps for the table parallel adjustment

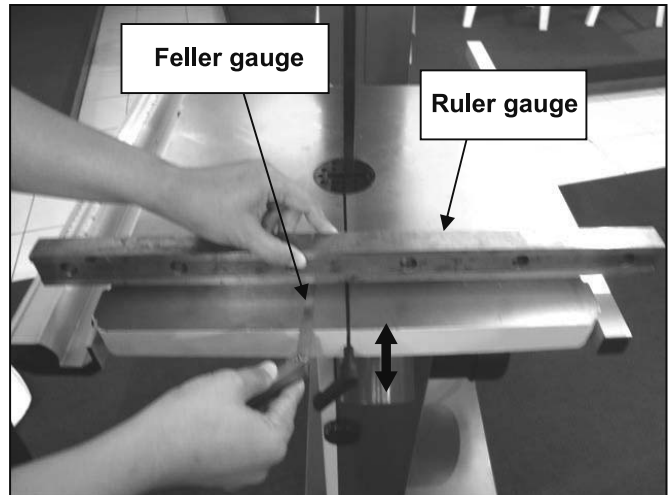
1. Insert table pin into table groove as Fig (1).
2. Use a ruler gauge put on the table, Fig (2) adjust the position of table pin (adjust the depth of the pin) and adjust the parallel of the table use the feller gauge, tolerance for the table parallel is within 0.4mm.
3. When adjust the table, see Fig (3) & Fig (4), the table edge can higher than the middle position about 0.4mm which is acceptable, edge can not lower than the middle part of the table.
Note: to insert the table pin deeper the middle part of the table will be lower.
4. Follow above steps to finish the table parallel adjustment.

Trouble shooting:

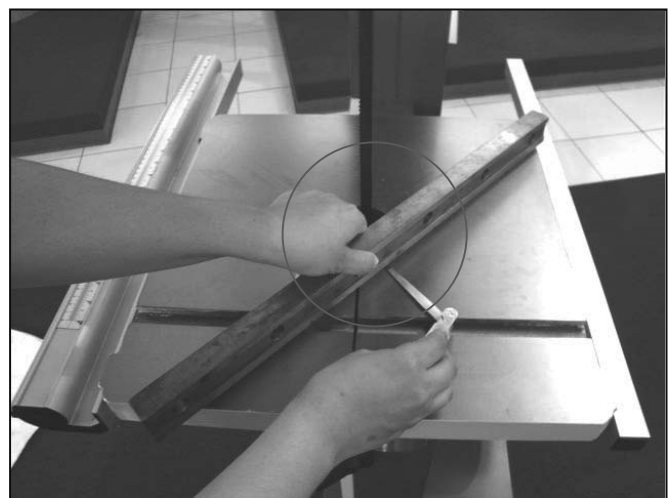
1. In case if the table pin stuck because you push it to deep , use a round bar ϕ 5mm~ ϕ 8mm and soft hammer to knock the table pin out from inside of the table be aware of your fingers.



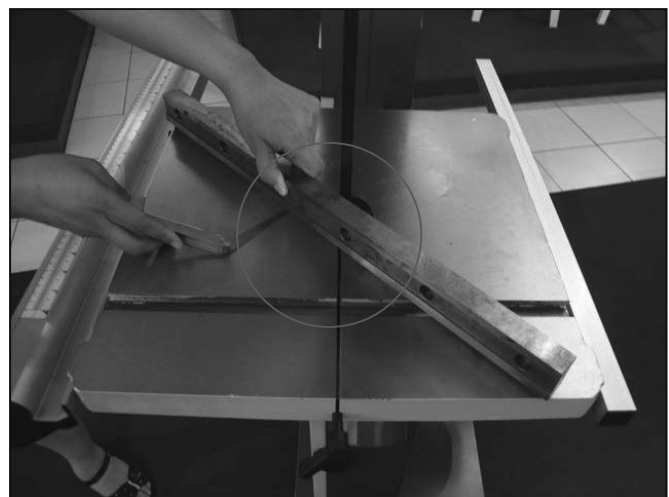
(fig.1)



(fig.2)

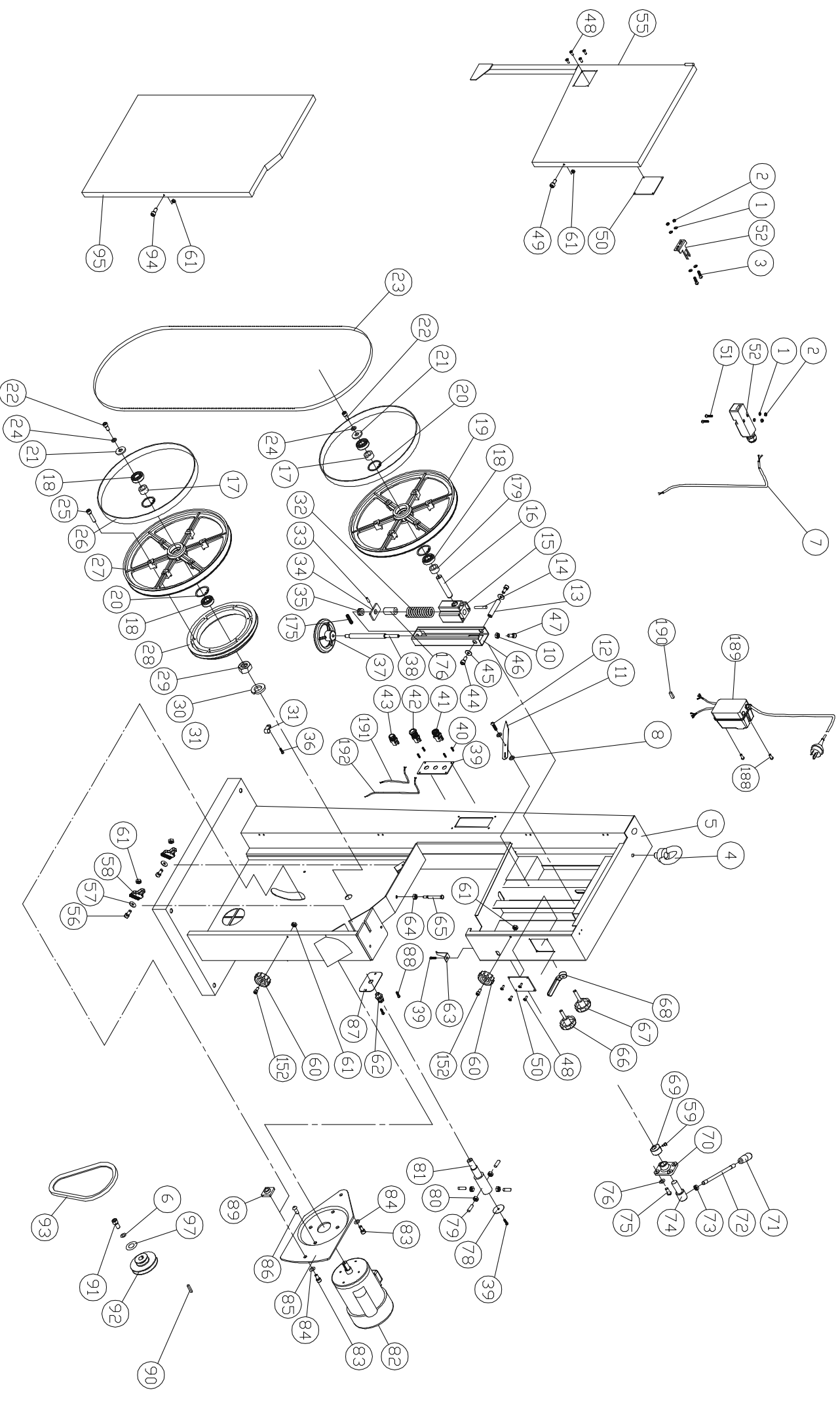


(fig.3)

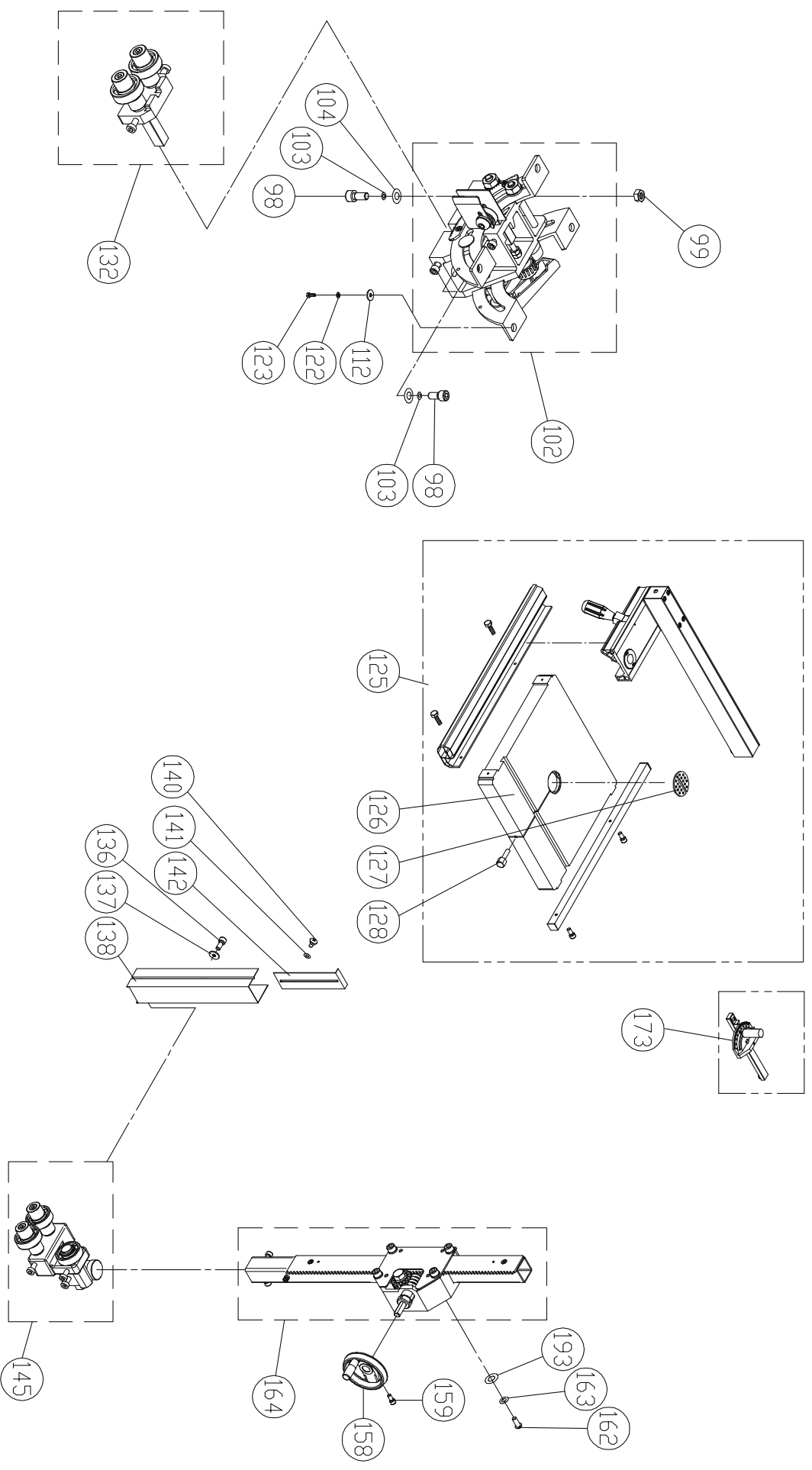


(fig.4)

Parts List For 17 Inch Band Saw Model No. SBW-4300 DCE



Parts List For 17 Inch Band Saw Model No. SBW-4300 DCE



**Parts List For 17 Inch Band Saw
Model No. SBW-4300 DCE**

KEY NO.	PARTS NO.	DESCRIPTION	SIZE	Q'TY
1	WF040808	FLAT WASHER	M4x ϕ 8	6
2	NH040700	NUT	M4	4
3	SP040200	PAN HEAD SCREW	M4x8	2
4	995101	RING	M10	1
5	135140	MACHINE BODY		1
6	WS080000	SPRING WASHER	M8	1
7	IC135025	SWITCH CORD		1
8	WF061310	FLAT WASHER	M6x ϕ 13	2
10	NH061000	NUT	M6	1
11	135040	POINTER		1
12	135073	STEP SCREW		1
13	135012	UPPER SHAFT		1
14	PS053500	SPRING PIN	ϕ 5x35	1
15	135017	UPPER WHEEL SHAFT HINGE		1
16	135066	UPPER WHEEL SHAFT		1
17	135039	BUSHING		2
18	BB620403	BALL BEARING	6204LLU	4
19	135024	UPPER WHEEL	ϕ 17"	1
20	RR470000	RETAINING RING	R47	4
21	WF083030	FLAT WASHER	M8x ϕ 30	2
22	SR089400	HEX SOCKET BOLT	M8X16	2
23	135075	SAW BLADE	6TPI	1
24	WS080000	SPRING WASHER	M8	2
25	SR060600	HEX SOCKET BOLT	M6x30	6
26	135105	TIRE		2
27	135014	LOWER WHEEL	ϕ 17"	1
28	135007	IDLE PULLEY		1
29	NH633801	NUT	1"-14 UNF	1
30	WS630000	SPRING WASHER	1"	1

**Parts List For 17 Inch Band Saw
Model No. SBW-4300 DCE**

KEY NO.	PARTS NO.	DESCRIPTION	SIZE	Q'TY
31	998625	CORD CLAMP		1
32	135032	SPRING		1
33	PS031600	SPRING PIN	ϕ 3X16	1
34	135042	LOCATE BLOCK		1
35	994301	BEARING	51201	1
36	ST040200	TAPPING SCREW	M4X10L	1
37	135002	HANDLE WHEEL		1
38	135003	ADJUSTING BOLT		1
39	136437	SWITCH PLATE		1
40	ST040200	TAPPING SCREW	M4X10L	4
41	994803	KEY SWITCH	ϕ 22	1
42	994801	STOP SWITCH	ϕ 22	1
43	994802	START SWITCH	ϕ 22	1
44	SR089400	HEX SOCKET BOLT	M8x16	2
45	WF083030	FLAT WASHER	M8X ϕ 30	2
46	135016	UPPER WHEEL SLIDING BRACKET		1
47	SR060500	HEX SOCKET BOLT	M6x25	1
48	BR000044	RIVET	ϕ 3.2x10	8
49	SR060200	HEX SOCKET BOLT	M6x10	1
50	135004	LIMPID PIECE		2
51	SF040700	PAN HEAD BOLT W/FLANGE	M4x35	2
52B	136457	DOOR LATCH SWITCH(ASM)	AZD-S11	1
55B	135087U	UPPER WHEEL COVER		1
56	SH060500	HEX HEAD BOLT	M6x25	2
57	WF061310	FLAT WASHER	M6x ϕ 13	2
58	135051	BRUSH		2
59	SR060500	HEX SOCKET BOLT	M6x25	1
60	135041	KNOB		2

**Parts List For 17 Inch Band Saw
Model No. SBW-4300 DCE**

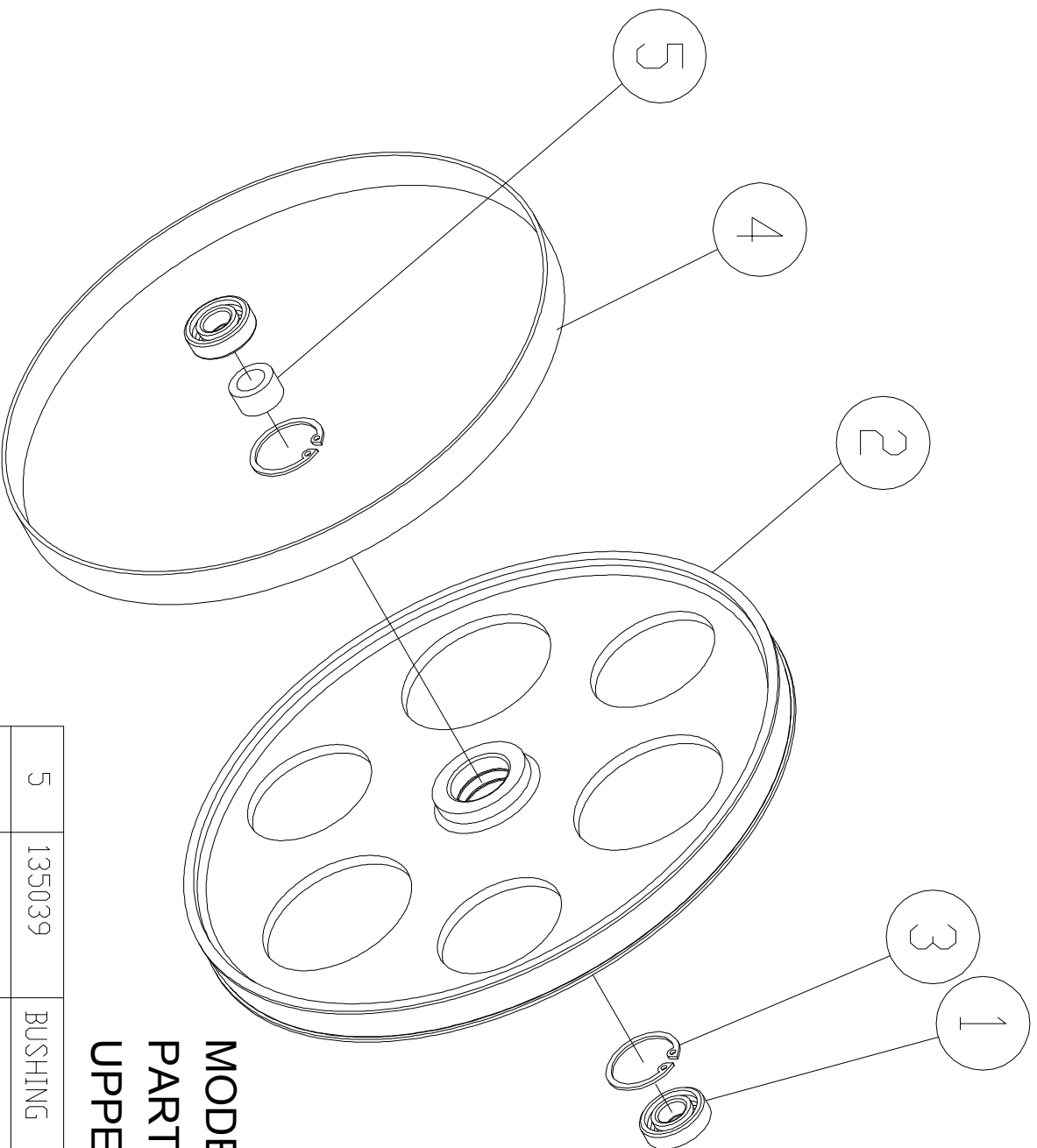
KEY NO.	PARTS NO.	DESCRIPTION	SIZE	Q'TY
61	NL061000	NYLON NUT	M6	6
62	709416	STRAIN RELIEF	M16	2
63	135011	HEIGHT POINTER		1
64	NH081300	NUT	M8	1
65	SH081800	HEX HEAD BOLT	M8x90	1
66	135022	KNOB SCREW		1
67	135020	KNOB SCREW		1
68	135028	LOCATE HANDLE	M10	1
69	135030	CAM		1
70	135038	LOCATE BLOCK		1
71	620021	KNOB		1
72	620020	LEVER ROD		1
73	NH121900	NUT	M12	1
74	135036	SHAFT		1
75	SJ080400	HEX SOCKET BOTTOM HEAD SCREW	M8x20	4
76	WS080000	SPRING WASHER	M8	4
78	135013	COVER		1
79	SS080400	SET SCREW	M8x20	4
80	NH081300	NUT	M8	4
81	135005	LOWER WHEEL SHAFT		1
82	MH135001	MOTOR	1 HP	1
83	SR100500	HEX SOCKET BOLT	M10x25	2
84	WS100000	SPRING WASHER	M10	2
85	135064	MOTOR BRACKET		1
86	SJ080400	HEX SOCKET BOTTOM HEAD SCREW	M8x20	4
87	136475	PLATE		1
88	ST040200	TAPPING SCREW	M4x10L	2
89	135065	LOCATE BLOCK		1
90	KS050535	KEY	5x5x35	1

**Parts List For 17 Inch Band Saw
Model No. SBW-4300 DCE**

KEY NO.	PARTS NO.	DESCRIPTION	SIZE	Q'TY
91	SH080402	HEX HEAD BOLT	M8x20(L.H)	1
92	135008	MOTOR PULLEY		1
93	LA420000	V-BELT	A42	1
94	SR060200	HEX SOCKET BOLT	M6x10	1
95B	135072U	LOWER WHEEL COVER		1
97	WF083030	FLAT WASHER	M8x30	1
98	SR100700	HEX SOCKET BOLT	M10x35	2
99	NH101700	NUT	M10	1
102	AB135021-C	TRUNNION SUPPORT BRACKET(ASM)		1
103	WS100000	SPRING WASHER	M10	2
104	WF102325	FLAT WASHER	M10x ϕ 23	2
112	WF081820	FLAT WASHER	M8x ϕ 18	4
122	WS080000	SPRING WASHER	M8	4
123	SH089400	HEX HEAD BOLT	M8x16	4
125 B	AB198005	16" FENCE SET	9CM	1
126	135019	TABLE	17"x17"	1
127	135010	TABLE INSERT		1
128	100038	TABLE PIN		1
132	AB135093A	LOWER BLADE GUIDE SUPPORT (ASM)		1
136	SR050200	HEX SOCKET BOLT	M5x10	2
137	WF051210	FLAT WASHER	M5x ϕ 12	2
138	135034	PROTECT COVER(ASM)		1
140	135073	STEP SCREW		1
141	135054	FIBER WASHER		1
142	135037	SLIDING PLATE		1
145	AB135091	UPPER BLADE GUIDE SUPPORT(ASM)		1
152	SR060400	HEX SOCKET BOLT	M6x20	2

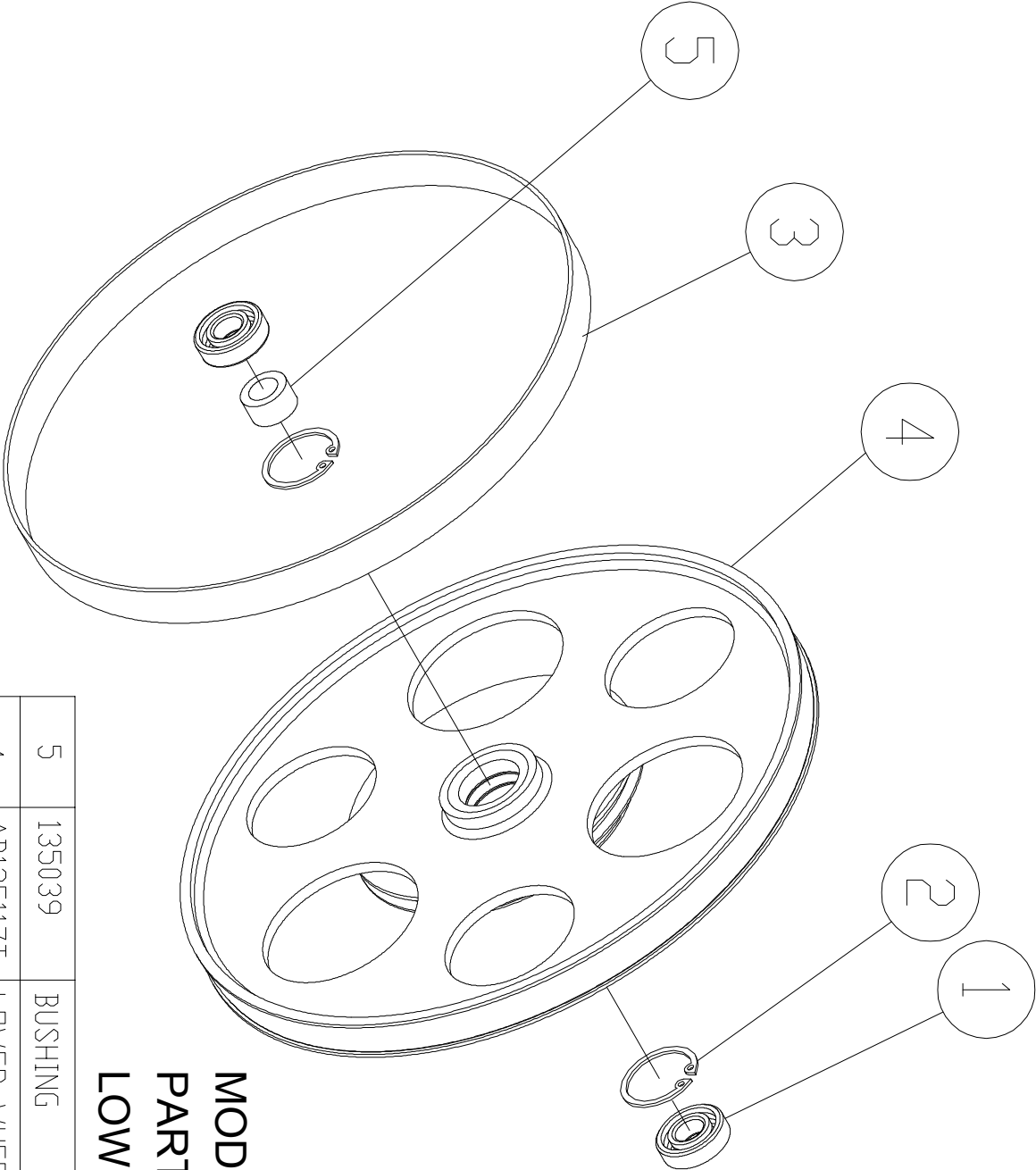
Parts List For 17 Inch Band Saw Model No. SBW-4300 DCE

[illegible]



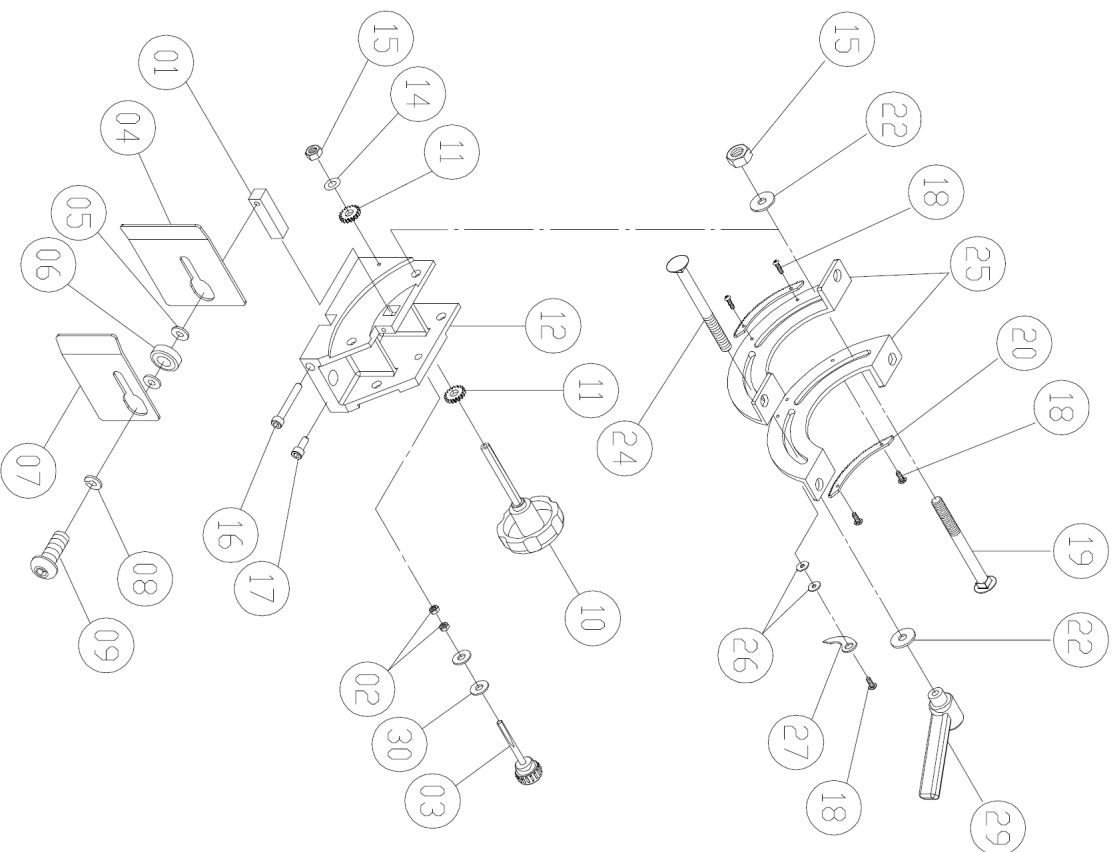
MODEL NO.: 17 Inch Band Saw
PART NO.: AB135116T
UPPER WHEEL (ASM)

5	135039	BUSHING		1
4	135105	TIRE		1
3	RR470000	RETAINING RING	R47	2
2	135116T	UPPER WHEEL		1
1	BB620403	BALL BEARING	6204LLU	2
Item	Part NO	Description		Qty



MODEL NO.: 17 Inch Band Saw
PART NO.: AB135119T
LOWER WHEEL (ASM)

5	135039	BUSHING		1
4	AB135117T	LOWER WHEEL ASM		1
3	135105	TIRE		1
2	RR470000	RETAINING RING	R47	2
1	BB620403	BALL BEARING	6204LLU	2
Item	Part NO	Description	Size	Qty



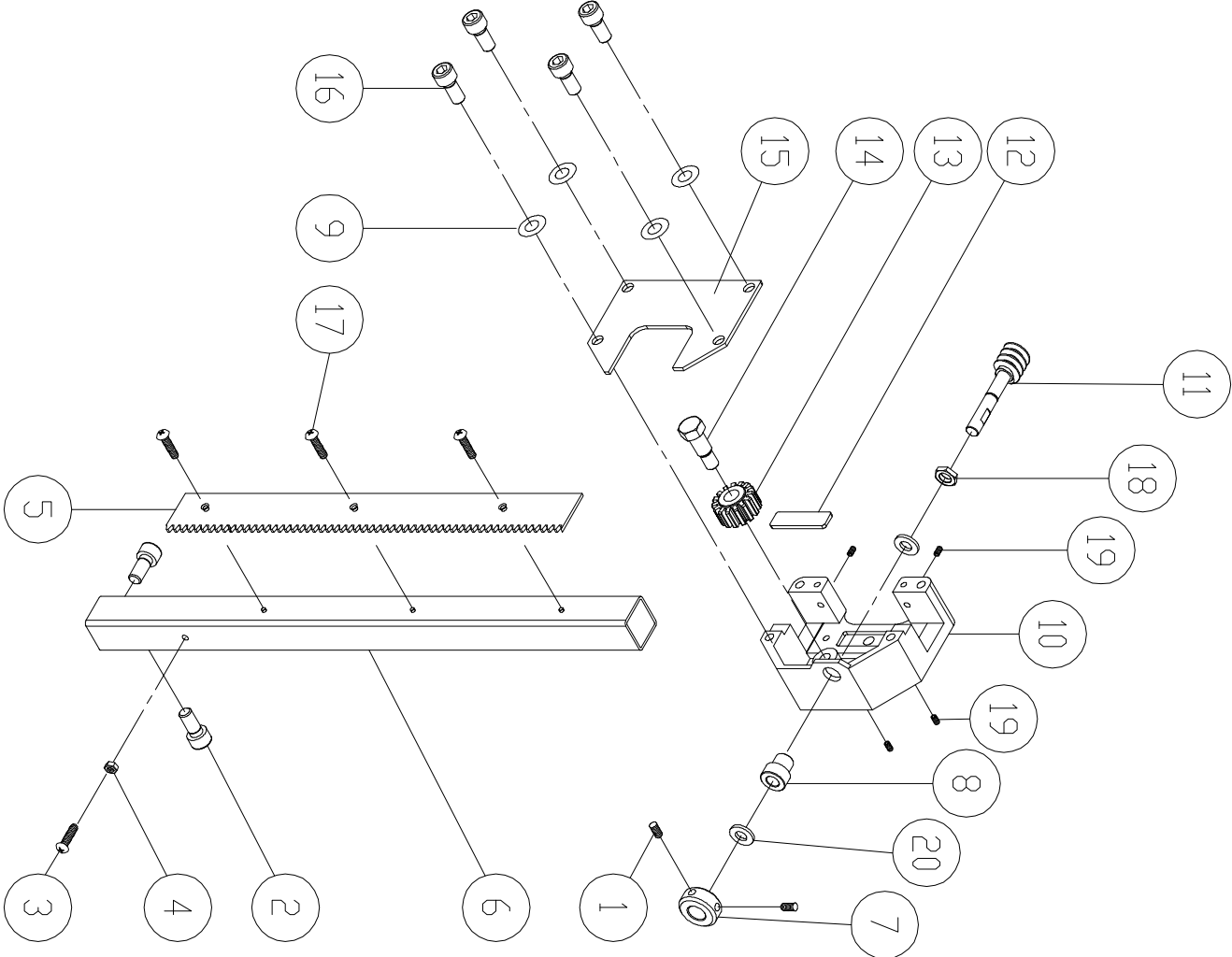
MODEL NO.: 17-21 Inch Band Saw

PART NO.: AB135021-C

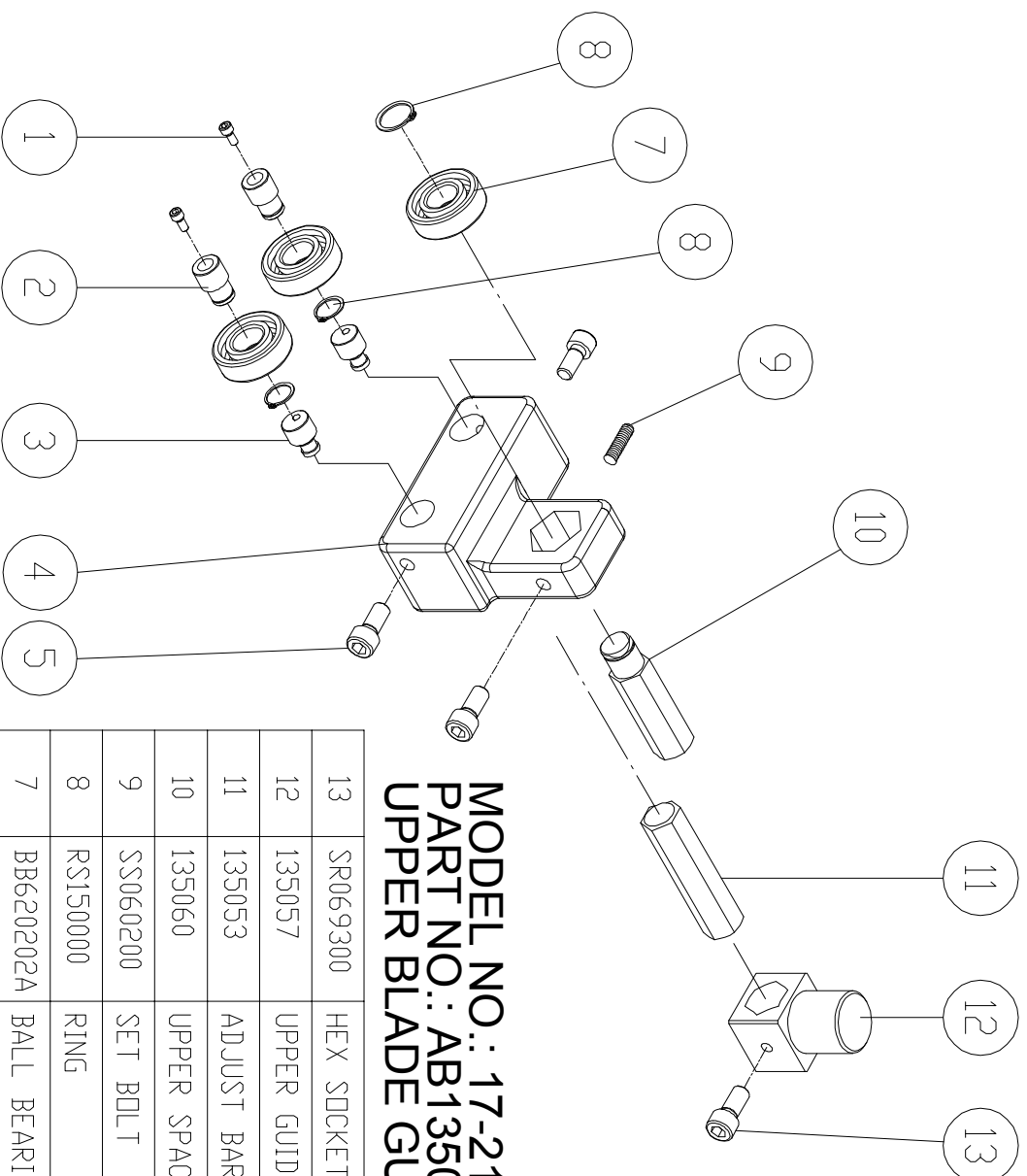
TRUNNION SUPPORT BRACKET

ITEM	PART NO.	DESCRIPTION	SIZE	Q'TY
1	135045	ADJUSTING BLOCK		1
2	NH061000	NUT	M6	2
3	135009	ADJUSTING BAR		1
4	135122	LEFT COVER		1
5	WF102025	FLAT WASHER	M10xφ20	2
6	BB600002A	BALL BEARING	6000ZZ	1
7	135123	RIGHT COVER		1
8	WS100000	SPRING WASHER	M10	1
9	SJ100500	HEX SOCKET BOTTON HEAD SCF	M10x25	1
10	135063	KNOB		1
11	135061	SMALL GEAR		2
12	135021	TRUNNION SUPPORT BRACKET		1
14	WS080000	SPRING WASHER	M8	1
15	NL081300	NYLON NUT	M8	2
16	SR061000	HEX HEAD BOLT	M6x50	1
17	SR060400	HEX HEAD BOLT	M6x20	1
18	SP049100	PAN HEAD BOLT	M4x6	5
19	SC081600	CARRIAGE BOLT	M8x80	1
20	135052	GEAR PLATE		2
22	WF081820	FLAT WASHER	M8xφ18	2
24	SC081700	CARRIAGE BOLT	M8x85	1
25	135025	TRUNNION PLATE		2
26	WF040808	FLAT WASHER	M4xφ8	2
27	135078	POINTER		1
29	135044	HANDLE		1
30	WF061300	FLAT WASHER	M6xφ13	2

MODEL NO.: 17-21 Inch Band Saw
PART NO.: AB135050 GUIDE BRACKET (ASM)

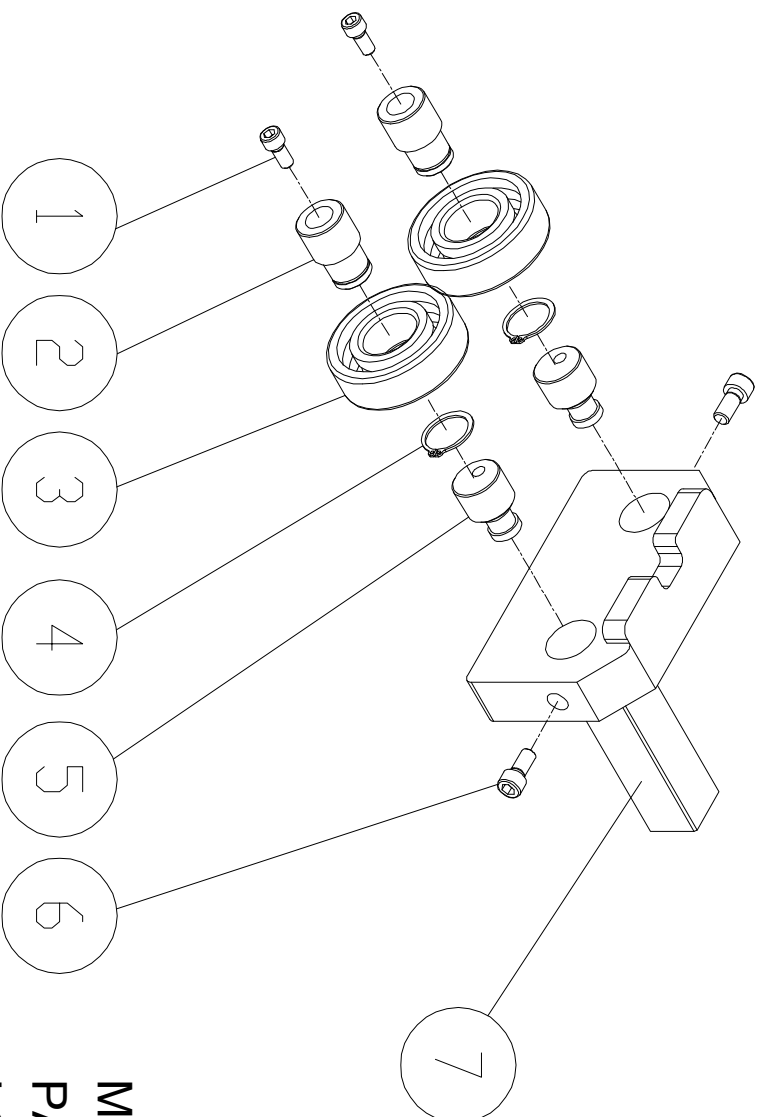


20	200069	FIBER WASHER		2
19	990306	SET BOLT	M7x10	4
18	136473	NUT	M16xP1.5	1
17	SN049200	COUNTER SUNK BOLT	M4x8	3
16	SR089400	HEX SOCKET BOLT	M8x16	4
15	135046	COVER		1
14	016320	FIXED BOLT		1
13	135049	GEAR		1
12	135062	FIXED PLATE		1
11	135033	WORM CYLINDER		1
10	135050	GUIDE BRACKET		1
09	WS080000	SPRING WASHER	M8	4
08	136453	BUSHING		1
07	135015	LOCATE BUSHING		1
06	135047	UPPER GUIDE HOSE		1
05	135029	RACK		1
04	NH040700	NUT	M4	1
03	SP040200	PAN HEAD BOLT	M4x10	1
02	SR069400	HEX SOCKET BOLT	M6x16	2
01	SS050100	SET BOLT	M5x5	2
Item	Part NO	Description	Size	Qty



MODEL NO.: 17-21 Inch Band Saw
PART NO.: AB135091
UPPER BLADE GUIDE (ASM)

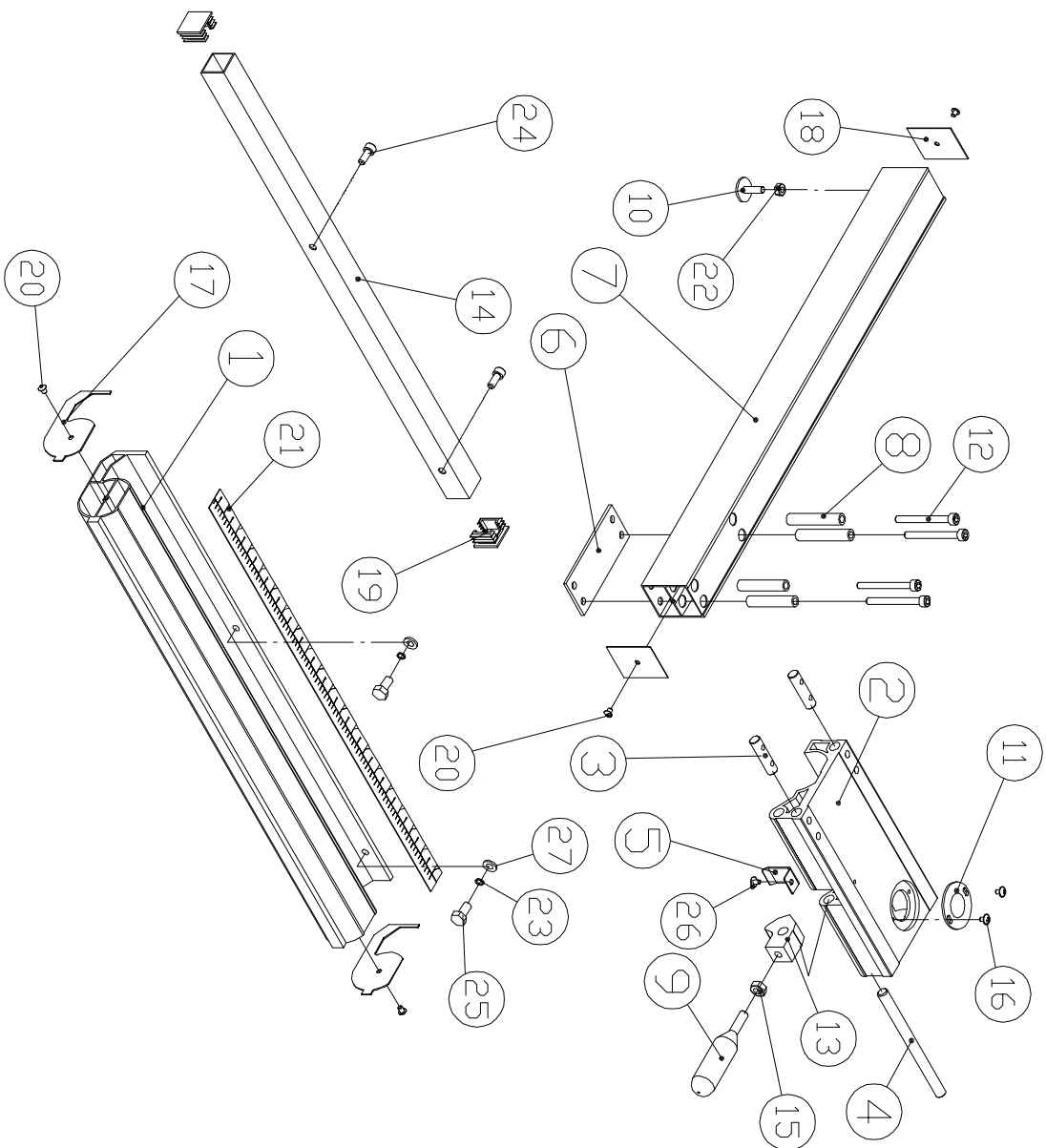
13	SR069300	HEX SOCKET BOLT	M6×12	1
12	135057	UPPER GUIDE SUPPORT BLOCK		1
11	135053	ADJUST BAR		1
10	135060	UPPER SPACING SLEEVE		1
9	SS060200	SET BOLT	M6×10	1
8	RS150000	RING	S15	3
7	BB620202A	BALL BEARING	6202ZZ	3
5	SR069400	HEX SOCKET BOLT	M6×16	3
4	135091	UPPER BLADE GUIDE SUPPORT		1
3	135090	BIAS SHAFT		2
2	135093	HANDLE BUSHING		2
1	SR060600	HEX SOCKET BOLT	M6×30	2
Item	Part NO	Description	Size	Q'ty



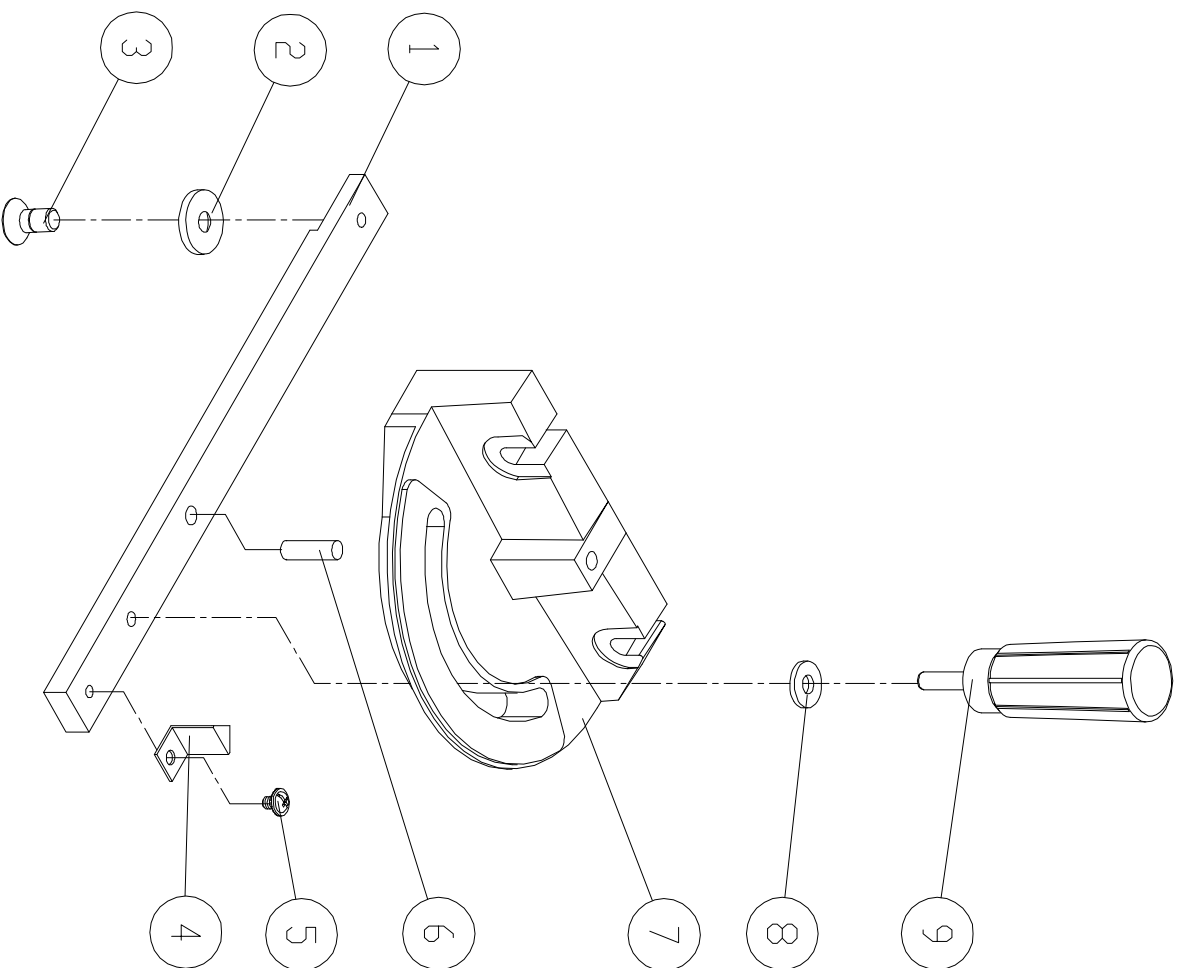
MODEL NO.: 17-21 Inch Band Saw
PART NO.: AB135093A
LOWER BLADE GUIDE (ASM)

7	135125	LOWER BLADE GUIDE SUPPORT		1
6	SR069300	HEX SOCKET BOLT	M6x16	2
5	135090	BIAS SHAFT		2
4	RS150000	RETAINING RING	S15	2
3	BB620202A	BALL BEARING	6202ZZ	2
2	135093	HANDLE BUSHING		2
1	SR060600	HEX SOCKET BOLT	M6x30	2
Item	Part NO	Description	Size	Qty

MODEL NO. : 17 Inch Band Saw
PART NO. : AB198005
FENCE SET



Item	Part NO	Description	Size	Q'ty
01	198018	FIXED BASE	640	1
02	198002	ADJUST BASE		1
03	198003	FIXED SHAFT		2
04	198005	SHAFT		1
05	198006	SPRING WASHER		1
06	198008	BRACKET	T=3	1
07	198021	SUPPORT TUBE	590	1
08	198017	INTERVAL SHEATH		4
09	198013	HANDLE		1
10	198012	ADJUST SCREW		1
11	198007	CONVEX		1
12	SR062003	HEX SOCKET BOLT	M6x100	4
13	198004	FIXED LUMP		1
14	198020	SQUARE TUBE	640	1
15	NH081300	NUT	M8	1
16	SF049100	PAN HEAD BOLT W/FLANGE	M4x6	2
17	198014	GUARD PIECE		2
18	198030	GUARD PIECE		2
19	198016	PLUGGED		2
20	ST039300	TAPPING SCREW	M3.5x12	4
21	LM000539	SCALE		1
22	NH061000	NUT	M6	1
23	WS060000	SPRING WASHER	M6	2
24	SR069400	HEX SOCKET BOLT	M6x16	2
25	SH060400	HEX HEAD BOLT	M6x20	2
26	SF049200	PAN HEAD BOLT W/FLANGE	M4x8	1
27	WF061310	FLAT WASHER	M6x13	2



MODEL NO.: 17-21 Inch Band Saw
PART NO.: AB198101
MITER GAUGE (ASM)

09	198105	HANDLE		1
08	198104	NYLON WASHER		1
07	198106	MITER GAUGE BODY		1
06	198107	STEEL PIN	ø6.5x10	1
05	SF059200	PAN HEAD BOLT W/FLANGE	M5x8	1
04	198103	POINTER		1
03	SN069200	COUNTER SUNK BOLT	M6x6	1
02	198102	GUIDE PIECE		1
01	198101	GUIDE BAR		1
Item	Part NO	Description	Size	Q'ty