

Parts List For 21 Inch Babd Saw
Model No. SBW-5300D CE

KEY NO.	PARTS NO.	DESCRIPTION	SIZE	Q'TY
1	WF040808	FLAT WASHER	M4x φ 8	6
2	NH040700	NUT	M4	4
3	SP040200	PAN HEAD SCREW	M4x8	2
4	995101	RING	M10	1
5	136585	MACHINE BODY		1
6	WS080000	SPRING WASHER	M8	1
7	IC135025	SWITCH CORD		1
8	WF061310	FLAT WASHER	M6x φ 13	2
9	WF081818	FLAT WASHER	M8x φ 18	4
10	NH061000	NUT	M6	1
11	135040	POINTER		1
12	135073	STEP SCREW		1
13	135012	UPPER SHAFT		1
14	PS053500	SPRING PIN	φ 5x35	1
15	135017	UPPER WHEEL SHAFT HINGE		1
16	135066	UPPER WHEEL SHAFT		1
17	135039	BUSHING		2
18	BB620403	BALL BEARING	6204LLU	4
19	136032	UPPER WHEEL	φ 21"	1
20	RR470000	RETAMING RING	R47	4
21	WF083030	FLAT WASHER	M8x φ 30	2
22	SR089400	HEX SOCKET BOLT	M8x16	2
23	136039	SAW BLADE	152"/3861 \pm 4.2x3/4"x0.5mm	1
24	WS080000	SPRING WASHER	M8	2
25	SR060600	HEX SOCKET BOLT	M6x30	6
26	136040	TIRE		2
27	136033	LOWER WHEEL	φ 21"	1
28	135007	IDLE PULLEY		1
29	NH633801	NUT	1"-14UNF	1
30	WS630000	SPRING WASHER	1"	1
31	998625	CORD CLAMP		1
32	135032	SPRING		1
33	PS031600	PIN	φ 3x16	1
34	135042	LOCATE BLOCK		1

Parts List For 21 Inch Babd Saw
Model No. SBW-5300D CE

KEY NO.	PARTS NO.	DESCRIPTION	SIZE	Q'TY
35	994301	BEARING	51201	1
36	ST040200	TAPPING SCREW	M4x10L	1
37	135002	HANDLE WHEEL		1
38	136037	ADJUSTING BOLT		1
39	994803	KEY SWITCH	φ 22	1
40	ST040200	TAPPING SCREW	M4x10L	4
41	135067	BUSHING		1
42	994801	STOP SWITCH	φ 22	1
43	994802	START SWITCH	φ 22	1
44	SR089400	HEX SOCKET BOLT	M8x16	2
45	WF083030	FLAT WASHER	M8x φ 30	2
46	135016	UPPER WHEEL SLIDING BRACKET		1
47	SR061000	HEX SOCKET BOLT	M6x50	1
48	BR000041	RIVET	φ 3.2x6	8
49	SR060200	HEX SOCKET BOLT	M6x10	1
50	135004	LIMPID PIECE		2
51	SF040700	PAN HEAD BOLT W/FLANGE	M4x35	2
52	136457	DOOR LATCH SWITCH(ASM)	AZD-S11	1
55	136203	OPPER WHEEL COVER		1
56	SH060500	HEX SOCKET BOLT	M6x25	2
57	WF061310	FLAT WASHER	M6x φ 13	2
58	135051	BRUSH		2
59	SR060500	HEX SOCKET BOLT	M6x25	1
60	135041	KNOB		2
61	NL061000	NYLON NUT	M6	6
62	709416	STRAIN RELIEF	M16	2
63	135011	HEIGHT POINTER		1
64	NH081300	NUT	M8	1
65	SH081800	HEX HEAD BOLT	M8x90L(全牙)	1
66	135022	KNOB SCREW		1
67	135020	KNOB SCREW		1
68	135028	LOCATE HANDLE	M10	1
69	135030	CAM		1
70	135038	LOCATE BLOCK		1

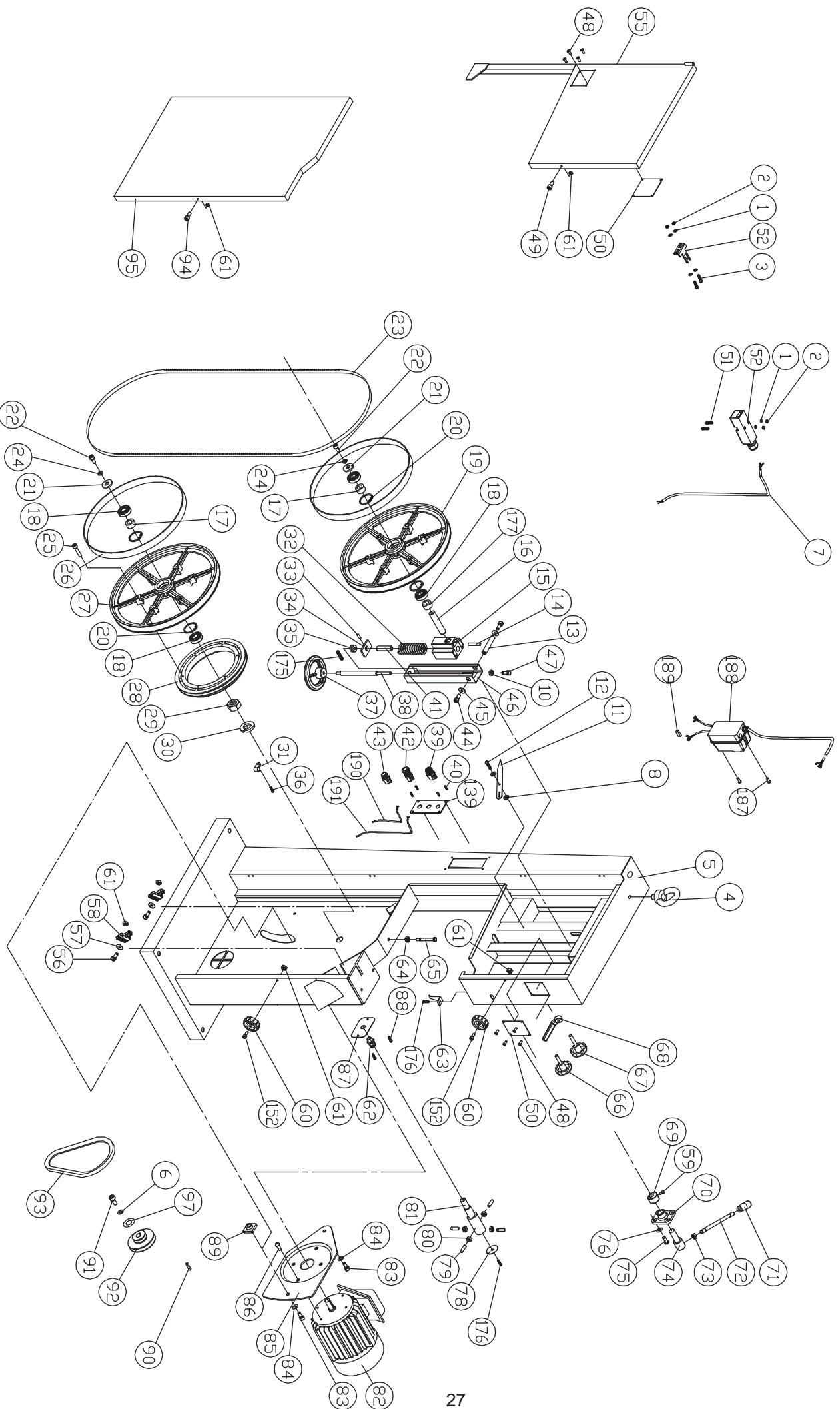
Parts List For 21 Inch Babd Saw
Model No. SBW-5300D CE

KEY NO.	PARTS NO.	DESCRIPTION	SIZE	Q'TY
71	620021	KNOB		1
72	620020	LEVER ROD		1
73	NH121900	NUT	M12	1
74	135036	SHAFT		1
75	SJ080400	HEX SOCKET BOTTON HEAD SCREW	M8x20L	4
76	WS080000	SPRING WASHER	M8	4
78	135013	COVER		1
79	SS080400	SET SCREW	M8x20L	4
80	NH081300	NUT	M8	4
81	135005	LOWER WHEEL SHAFT		1
82	MH135005	MOTOR	2 HP	1
83	SR100500	HEX HEAD BOLT	M10x25L	2
84	WS100000	SPRING WASHER	M10	2
85	135064	MOTOR BRACKET		1
86	SJ080400	HEX SOCKET BOTTON HEAD SCREW	M8x20L	4
87	136475	PLATE		1
88	ST040200	TAPPING SCREW	M4x10L	2
89	135065	LOCATE BLOCK		1
90	KS050535	KEY	5x5x35	1
91	SH080402	HEX HEAD BOLT	M8x20L(L.H)	1
92	135008	MOTOR PULLEY		1
93	LA440000	V-BELT	A44	1
94	SR060200	HEX SOCKET BOLT	M6x10L	1
95	136036	LOWER WHEEL COVER		1
97	WF083030	FLAT WASHER	M8x ϕ 30	1
98	SR100700	HEX SOCKET BOLT	M10x35L	2
99	NH101700	NUT	M10	1
102	AB135021-C	TRUNNION SUPPORT BRACKET(ASM)		1
103	WS100000	SPRING WASHER	M10	2
104	WF102325	FLAT WASHER	M10x ϕ 23	2
112	WF081820	FLAT WASHER	M8x ϕ 18	4
122	WS080000	SPRING WASHER	M8	4
123	SH089400	HEX HEAD BOLT	M8x16	4
125	AB198004	21" FENCE SET		1

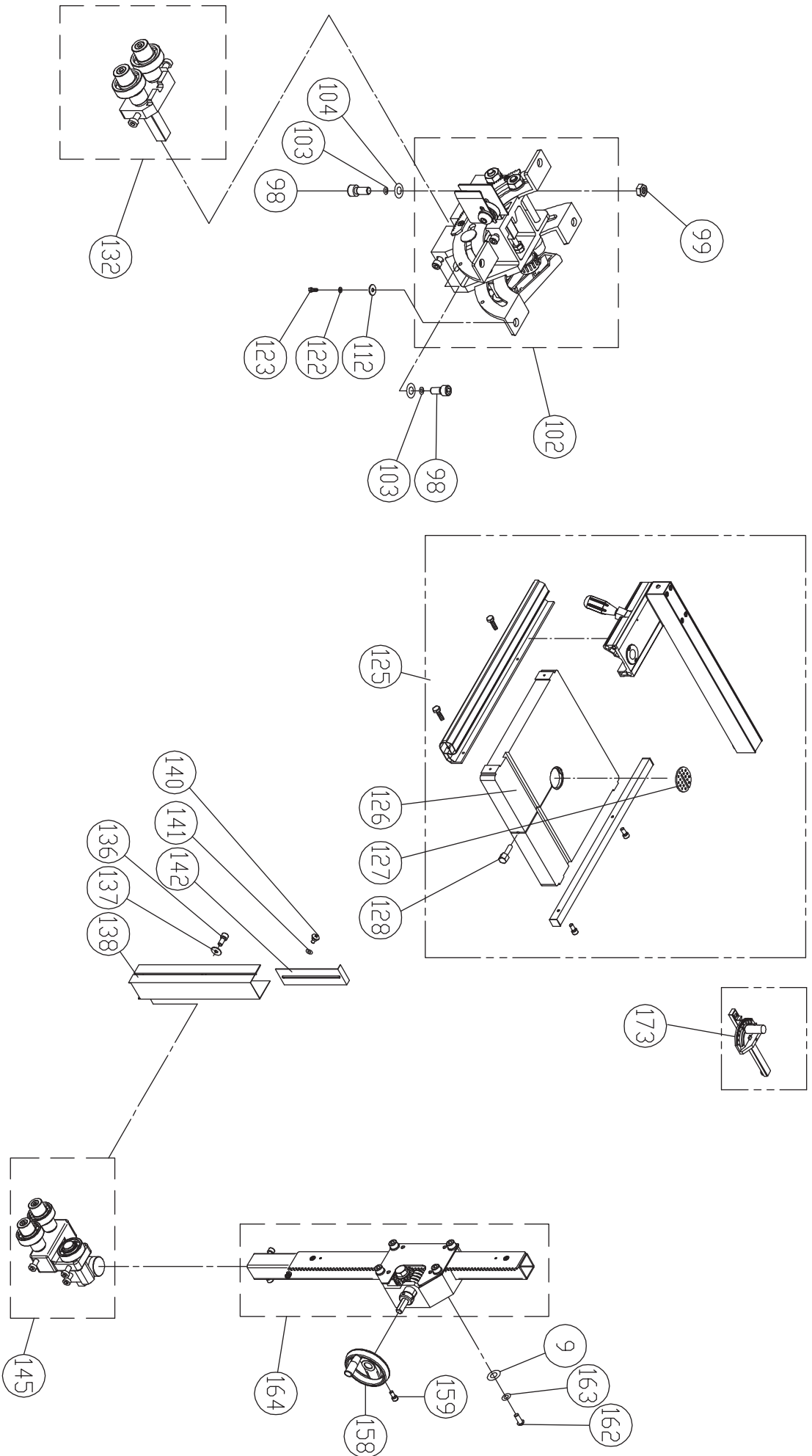
Parts List For 21 Inch Babd Saw
Model No. SBW-5300D CE

KEY NO.	PARTS NO.	DESCRIPTION	SIZE	Q'TY
126	136034	TABLE	21"x21"	1
127	135010	TABLE INSERT		1
128	100038	TABLE PIN		1
132	AB135093A	LOWER BLADE GUIDE SUPPORT(ASM)		1
136	SR050200	HEX SOCKET BOLT	M5x10	2
137	WF051210	FLAT WASHER	M5x ϕ 12	2
138	135034	PROTECT COVER(ASM)		1
139	136437	SWITCH PLATE		1
140	135073	STEP SCREW		1
141	135054	FIBER WASHER	ϕ 13x6x1.2	1
142	135037	SLIDING PLATE		1
145	AB135091	UPPER BLADE GUIDE SUPPORT(ASM)		1
152	SR060400	HEX SOCKET BOLT	M6x20L	2
158	135006	HANDLE WHEEL		1
159	SR060400	HEX SOCKET BOLT	M6x20L	1
162	SJ080400	HEX SOCKET BOTOM HEAD SCREW	M8x20L	4
163	WS080000	SPRING WASHER	M8	4
164	AB135050	GUIDE BRACKET(ASM)		1
173	AB198101	MITER GAUGE ASS'Y		1組
175	SS069300	SET SCREW	M6x10L	1
176	SF050200	PAN HEAD BOLT W/FLANGE	M5x10L	2
177	612112	BUSHING		1
179	SP050100	PAN HEAD BOLT	M5x50L	2
187	SP050200	PAN HEAD BOLT	M5x10L	1
188	AB136114-1	MAGNETIC SWITCH		1
189	136019	WIRE CONNECTOR	224-201	1
190	IC135012	SWITCH CORD		1
191	IC135026	SWITCH CORD		1

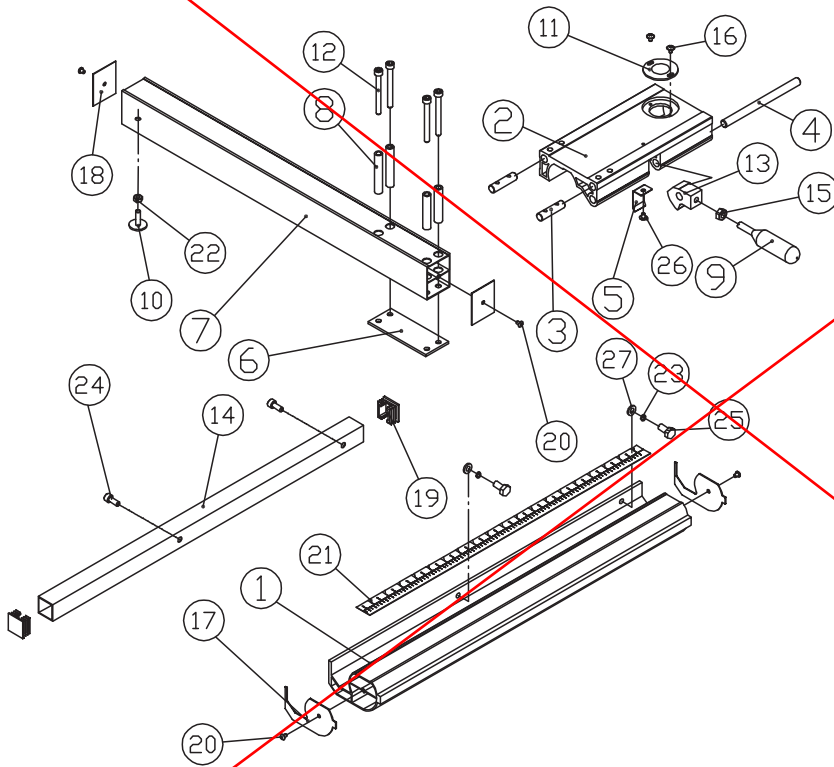
Parts List For 21 Inch Babb Saw Model No. SBW-5300D CE



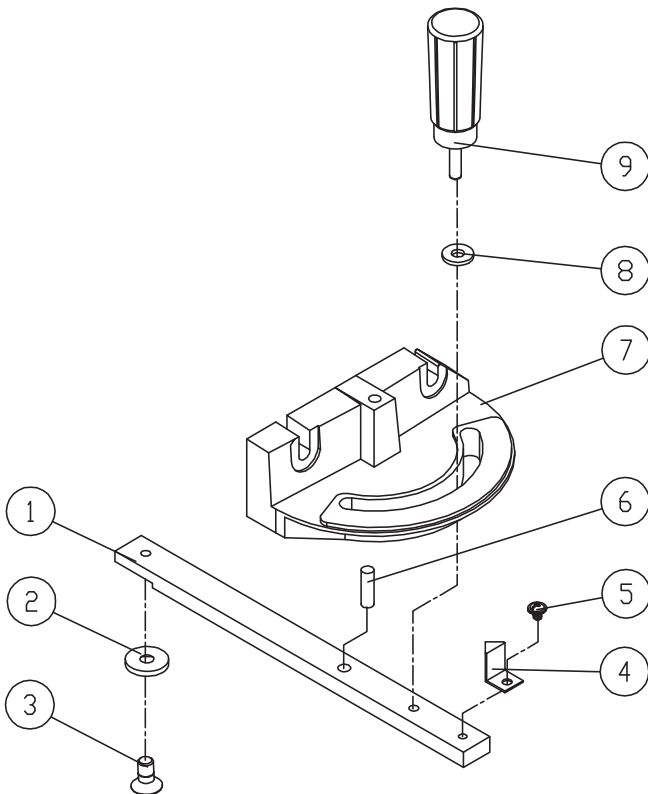
Parts List For 21 Inch Babb Saw Model No. SBW-5300D CE



PART NO.: AB198004
21" FENCE SET

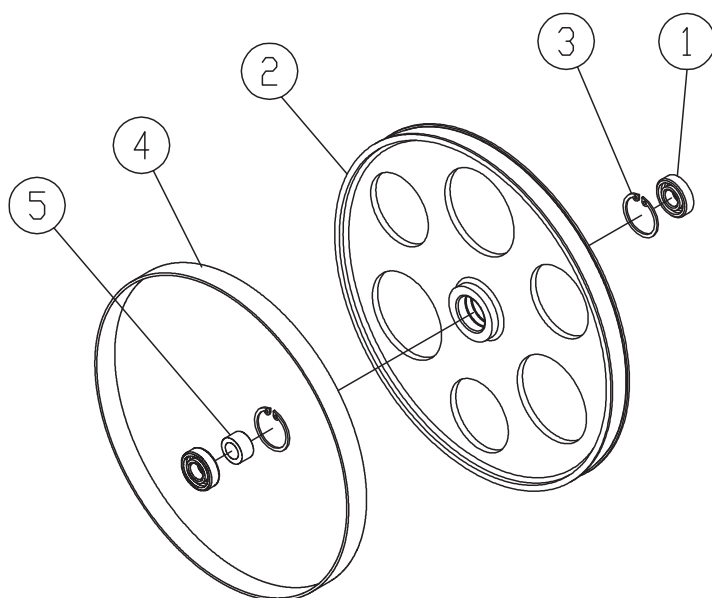


KEY NO.	PARTS NO.	DESCRIPTION	SIZE	Q'TY
27	WFO61310	FLAT WASHER	M6×13	2
26	SFO49200	PAN HEAD BOLT W/FLANGE	M4×8	1
25	SH060400	HEX HEAD BOLT	M6×20	2
24	SR069400	HEX SOCKET BOLT	M6×16	2
23	WS060000	SPRING WASHER	M6	2
22	NH061000	NUT	M6	1
21	LM000539	SCALE		1
20	STO39200	TAPPING SCREW	3, 5×8	4
19	198016	PLUGGED		2
18	198015	GUARD PIECE		2
17	198014	GUARD PIECE		2
16	SFO49100	PAN HEAD BOLT W/FLANGE	M4×6	2
15	NH081300	NUT	M8	1
14	198027	SQUARE TUBE	790	1
13	198004	FIXED LUMP		1
12	SR061203	HEX SOCKET BOLT	M6×60	4
11	198007	CONVEX		1
10	198012	ADJUST SCREW		1
9	198013	HANDLE		1
8	198010	INTERVAL SHEATH		4
7	198028	SUPPORT TUBE	690	1
6	198008	BRACKET	T=3	1
5	198006	SPRING PIECE		1
4	198005	SHAFT		1
3	198003	FIXED SHAFT		2
2	198002	ADJUST BASE		1
1	198026	FIXED BASE	790	1



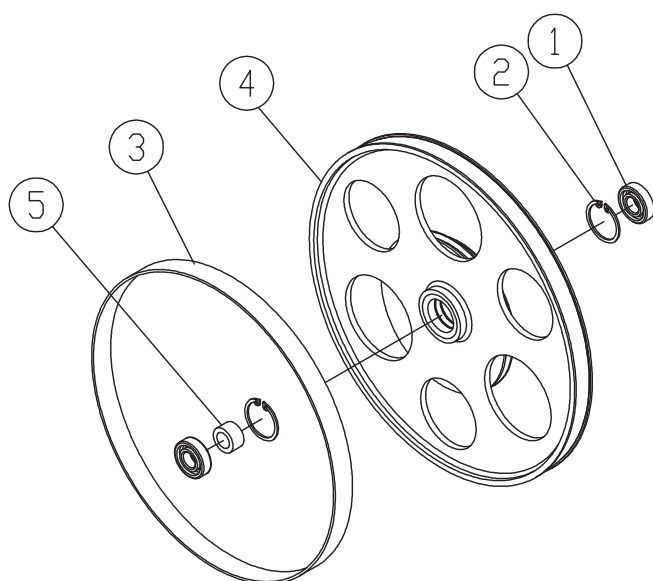
PART NO.: AB198101
MITER GAUGE ASS'Y

KEY NO.	PARTS NO.	DESCRIPTION	SIZE	Q'TY
09	198105	HANDLE		1
08	198104	NY-ON WASHER		1
07	198106	MITER GAUGE BODY		1
06	198107	STEEL PIN	Ø6.5×10	1
05	SF059200	PAN HEAD BOLT W/FLANGE	M5×8	1
04	198103	POINTER		1
03	SN069200	COUNTER SUNK BOLT	M6×6	1
02	198102	GUIDE PIECE		1
01	198101	GUIDE BAR		1



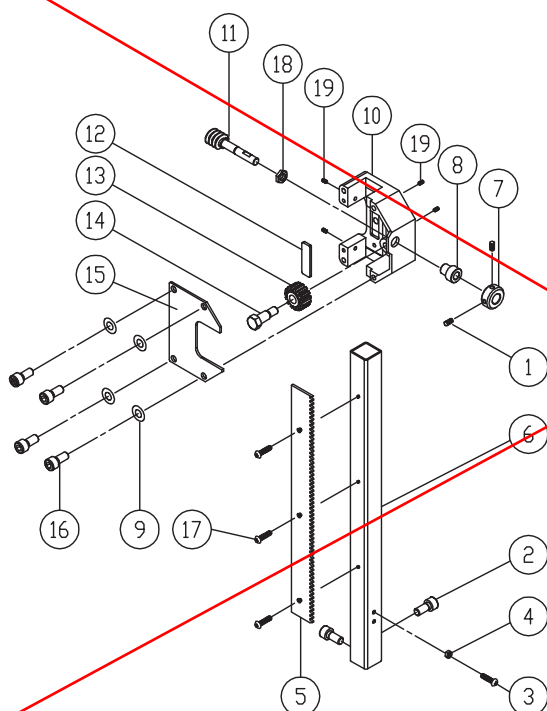
PART NO.: AB136046T
UPPER WHEEL (ASM)

KEY NO.	PARTS NO.	DESCRIPTION	SIZE	Q'TY
1	BB620403	BALL BEARING	6204LLU	2
2	136046T	UPPER WHEEL		1
3	RR470000	RETAINING RING	R47	2
4	136040	TIRE		1
5	135039	BUSHING		1



PART NO.:AB136048T
LOWER WHEEL (ASM)

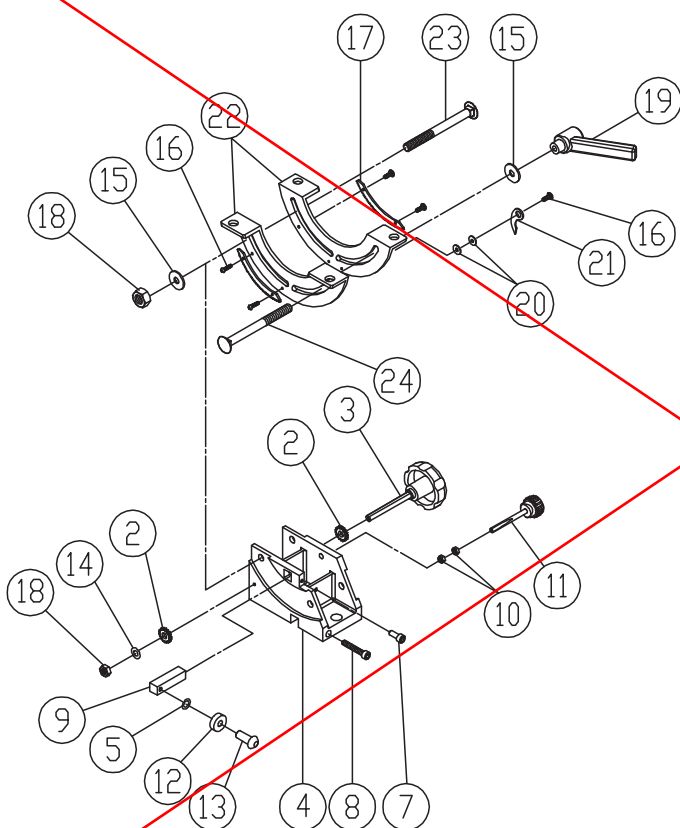
KEY NO.	PARTS NO.	DESCRIPTION	SIZE	Q'TY
1	BB620403	BALL BEARING	6204LLU	2
2	RR470000	RETAINING RING	R47	2
3	136040	TIRE		1
4	AB136047T	LOWER WHEEL ASM		1
5	135039	BUSHING		1



PART NO.: AB135050T3
GUIDE BRACKET (ASM)

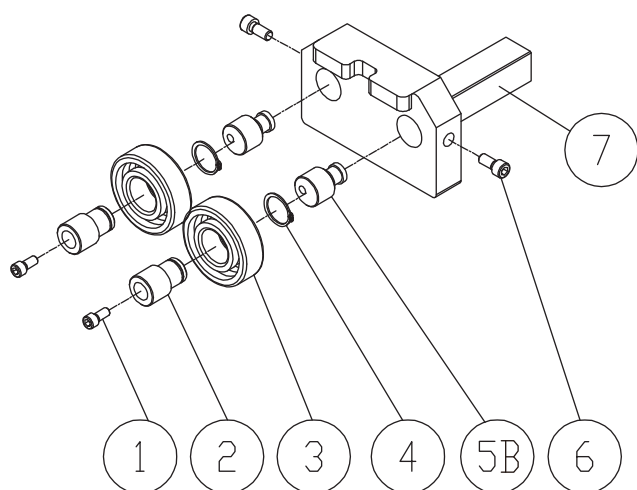
KEY NO.	PARTS NO.	DESCRIPTION	SIZE	Q'TY
1	SS05100	SET SCREW	M5x5	2
2	SR069400	HEX SOCKET BOLT	M6x16	2
3	SP040200	PAN HEAD BOLT	M4x10	1
4	NH040700	NUT	M4	1
5	135029	PACK		1
6	136823	UPPER GUIDE HOSE	550mm	1
7	135015	LOCATE BUSHING		1
8	136453	BUSHING		1
9	WS080000	SPRING WASHER	M8	4
10	135050	GUIDE BRACKET		1
11	135033	WORM CYLINDER		1
12	135062	FIXED PLATE		1
13	135049	GEAR		1
14	016320	FIXED BOLT		1
15	135046	COVER		1
16	SR089400	HEX SOCKET BOLT	M8x16	4
17	SN049200	COUNTER SUNK BOLT	M4x8	3
18	136473	NUT	M16xP1.5	1
19	990306	SET SCREW	M7x10	4

PART NO.: AB135021
TRUNNION SUPPORT BRACKET (ASM)



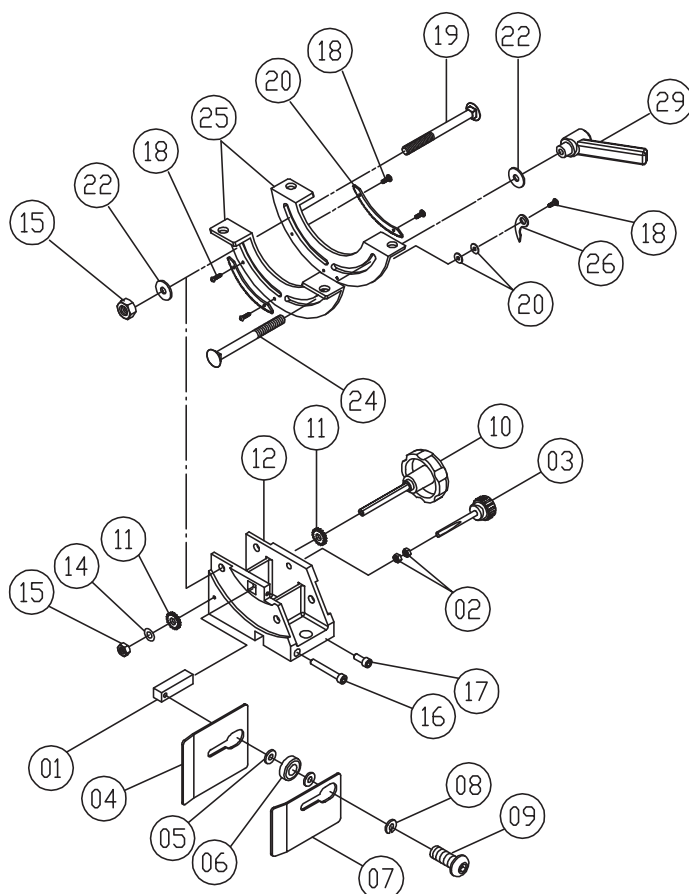
KEY NO.	PARTS NO.	DESCRIPTION	SIZE	Q'TY
24	SC081700	CARRIAGE BOLT	M8xP1. 25x85L	1
23	SC081600	CARRIAGE BOLT	M8xP1. 25x80L	1
22	135025	TRUNNION PLATE		2
21	135078Y	POINTER		1
20	WF040808	FLAT WASHER	M4xØ8x±0.8mm	2
19	135044	HANDLE	M8xP1. 25x25L	1
18	NL081300	NYLON NUT	M8	2
17	135052	GEAR PLATE		2
16	SP049100	PAN HEAD BOLT	M4xP0. 7x6L	5
15	WF081820	FLAT WASHER	M8xØ18	2
14	WS080000	SPRING WASHER	M8	1
13	SJ1008400	HEX SOCKET BOTTOM HEAD SCREW	M10xP1. 5x20L	1
12	BB600002A	BALL BEARING	6000ZZ	1
11	135009	ADJUSTING BAR		1
10	NH061000	NUT	M6	2
9	135045	ADJUSTING BLOCK		1
8	SR061000	HEX SOCKET BOLT	M6xP1x50L	1
7	SR060400	HEX SOCKET BOLT	M6xP1x20L	1
5	WS100000	SPRING WASHER	M10	1
4	135021	TRUNNION SUPPORT BRACKET		1
3	135063	KNOB		1
2	135061	SMALL GEAR		2

PART NO.: AB135093A
LOWER BLADE GUIDE SUPPORT (ASM)

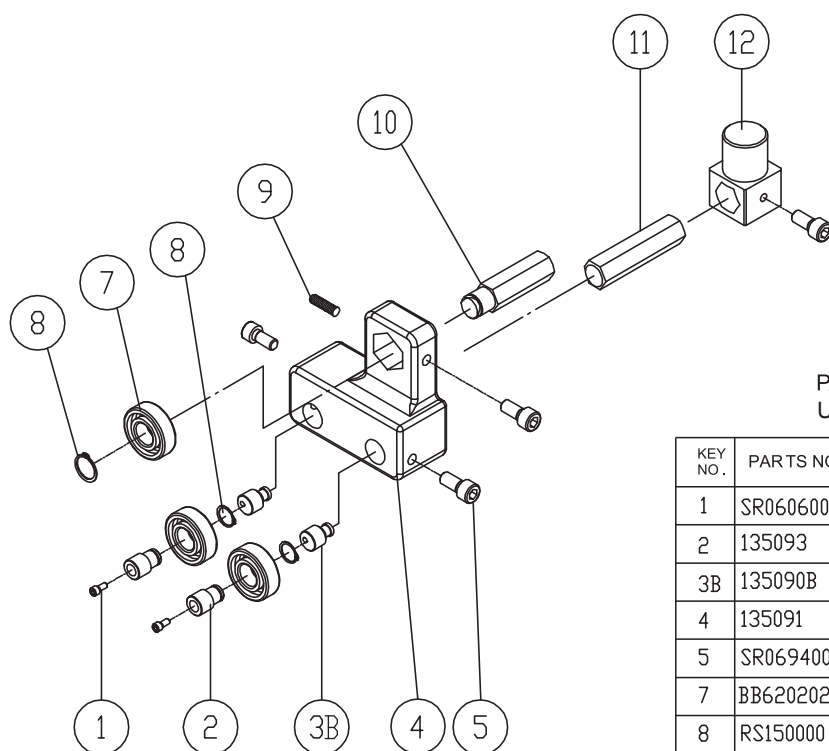


Item	Part NO	Description	Size	Q'ty
1	SR060600	HEX SOCKET BOLT	M6x30	2
2	135093	HANDLE BUSHING		2
3	BB620202A	BALL BEARING	6202ZZ	2
4	RS150000	RETAINING RING	S15	2
5B	135090B	BIAS SHAFT		2
6	SR069300	HEX SOCKET BOLT	M6x16	2
7	135125	LOWER BLADE GUIDE SUPPORT		1

PART NO.:AB135021-C
TRUNNION SUPPORT BRACKET (ASM)



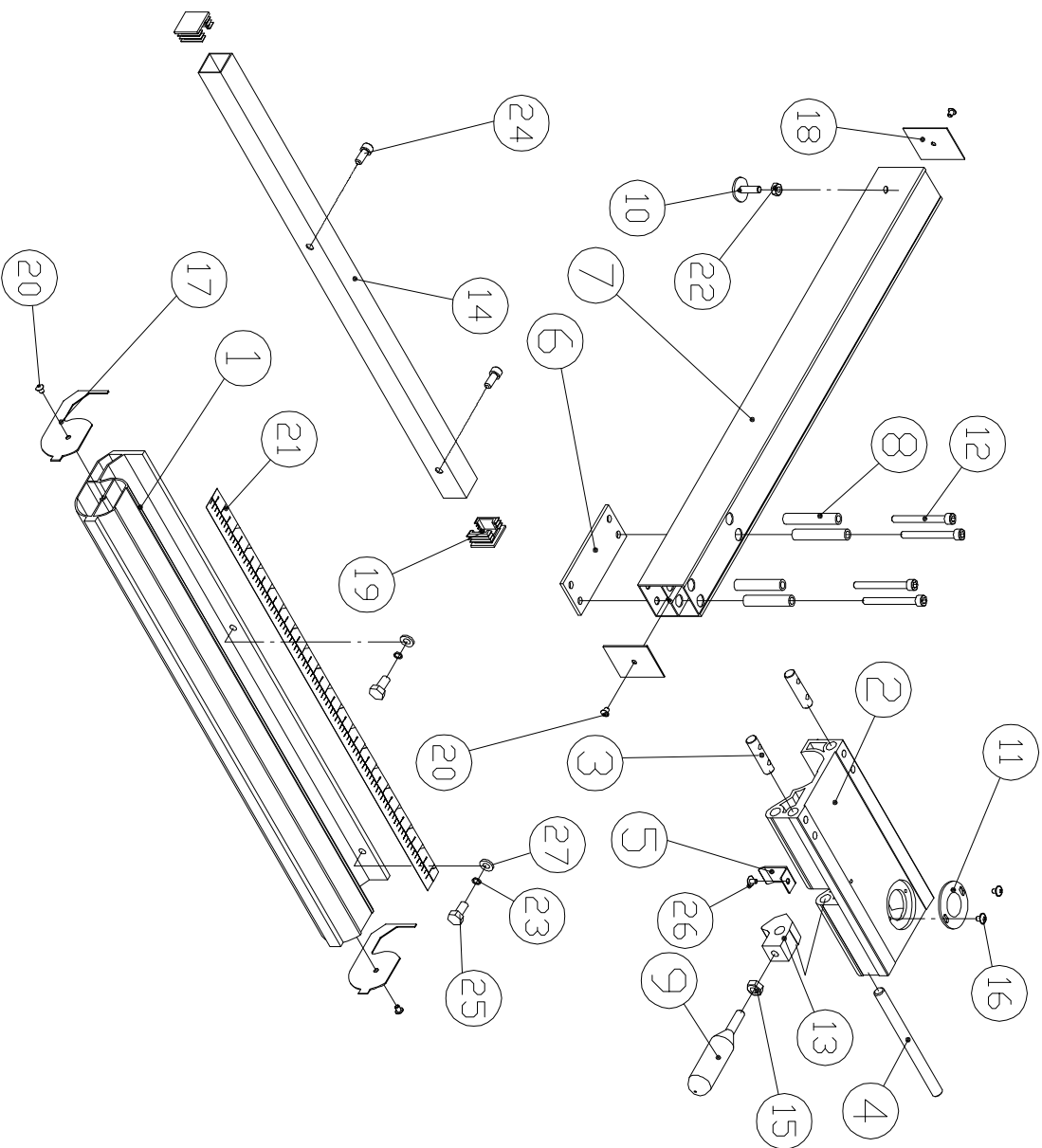
KEY NO.	PARTS NO.	DESCRIPTION	SIZE	Q'TY
01	135045	ADJUST BLOCK		1
02	NH061000	NUT	M6	2
03	135009	ADJUST BOLT	M6	1
04	135122	LEFT COVER		1
05	WF102025	FLAT WASHER	M10xø20	2
06	BB600002A	BALL BEARING	6000ZZ	1
07	135123	RIGHT COVER		1
08	WS100000	SPRING WASHER	M10	1
09	SJ100500	HEX SOCKET BOTTOM HEAD SCREW	M10x25	1
10	135063	KNOB SCREW		1
11	135061	SMALL GEAR		2
12	135021	TRUNNION SUPPORT BRACKET		1
14	WS080000	SPRING WASHER	M8	1
15	NL081300	NYLON NUT	M8	2
16	SR061000	HEX SOCKET BOLT	M6x50	1
17	SR060400	HEX SOCKET BOLT	M6x20	1
18	SP049100	PAN HEAD BOLT	M4x6	5
19	SC081600	CARRIAGE BOLT	M8x80	1
20	135052	GEAR PLATE		2
22	WF081820	FLAT WASHER	M8xø18	2
24	SC081700	CARRIAGE BOLT	M8x85	1
25	135025	TRUNNION PLATE		2
26	WF040808	FLAT WASHER	M4xø8	2
27	135078	POINTER		1
29	135044	HANDLE		1



PART NO.:AB135091
UPPER BLADE GUIDE SUPPORT (ASM)

KEY NO.	PARTS NO.	DESCRIPTION	SIZE	Q'TY
1	SR060600	HEX SOCKET BOLT	M6x30	2
2	135093	HANDLE BUSHING		2
3B	135090B	BIAS SHAFT		2
4	135091	UPPER BLADE GUIDE SUPPORT		1
5	SR069400	HEX SOCKET BOLT	M6x16	4
7	BB620202A	BALL BEARING	6202ZZ	3
8	RS150000	RING	S15	3
9	SS060200	SET BOLT	M6x10	1
10	135060	UPPER SPACING SLEEVE		1
11	135053	ADJUST BAR		1
12	135057	UPPER GUIDE SUPPORT BLOCK		1

MODEL NO. : 21 Inch Band Saw PART NO. : AB198007 FENCE SET



Item	Part NO	Description	Size	Qty
01	198026	FIXED BASE	790	1
02	198002	ADJUST BASE		1
03	198003	FIXED SHAFT		2
04	198005	SHAFT		1
05	198006	SPRING WASHER		1
06	198008	BRACKET	T=3	1
07	198029	SUPPORT TUBE	690	1
08	198017	INTERVAL SHEATH		4
09	198013	HANDLE		1
10	198012	ADJUST SCREW		1
11	198007	CONVEX		1
12	SR062003	HEX SOCKET BOLT	M6x100	4
13	198004	FIXED LUMP		1
14	198027	SQUARE TUBE	790	1
15	NH081300	NUT	M8	1
16	SF049100	PAN HEAD BOLR W/FLANGE	M4x6	2
17	198014	GUARD PIECE		2
18	198030	GUARD PIECE		2
19	198016	PLUGGED		2
20	ST039200	TAPPING SCREW	M3.5x8	4
21	LM000539	SCALE		1
22	NH061000	NUT	M6	1
23	WS060000	SPRING WASHER	M6	2
24	SR069400	HEX SOCKET BOLT	M6x16	2
25	SH060400	HEX HEAD BOLT	M6x20	2
26	SF049200	PAN HEAD BOLR W/FLANGE	M4x8	1
27	WF061310	FLAT WASHER	M6x13	2